

**SIGN 201 INTERPRETING I**

Units: 3.00 - CSU, May Be Taken Once for Credit

*Prerequisite: SIGN-104, 110, and 112*

Introduces the process of consecutive interpreting including skills for analyzing, processing, and interpreting English meaning while conveying it accurately into American Sign Language.

82993 09:30AM-10:50AM MW D. Sison MENH-244

**SIGN 202 TRANSLITERATING I**

Units: 3.00 - CSU, May Be Taken Once for Credit

*Prerequisite: SIGN-104, 110, and 112*

Introduces the process of consecutive transliteration, analyzing, processing, and interpreting English meaning while conveying it accurately into a Manually Coded English form.

82994 09:30AM-10:50AM TTH D. Sison MENH-244

**SIGN 203 SIGN TO ENGLISH INTERPRETING/TRANSLITERATING I**

Units: 3.00 - CSU, May Be Taken Once for Credit

*Prerequisite: SIGN-104, 110, and 112*

Introduces the skills required for accurate Sign to English interpretation/Transliteration. Takes a theoretical and practical approach to analyzing the process and discussing common techniques and difficulties.

82995 11:00AM-12:20PM MW D. Sison MENH-244

**CWE 188SIGN COOPERATIVE WORK EXPERIENCE EDUCATION SIGN LANGUAGE**

Units: 1.00-4.00 - CSU, Unlimited Repeats

Provides students with the opportunity to apply knowledge and skills gained from college courses in an actual work setting. The work experience may be paid or unpaid. For more information about earning elective units for ongoing work experience or applying for an internship, visit [www.canyons.edu/cwee](http://www.canyons.edu/cwee). Maximum 8 units per term and 16 total units.

83844 - S. Wright STCN-123

83845 - S. Wright STCN-123

09/06/11-12/10/11

**■ SOCIOLOGY ■****SOCI 101H INTRODUCTION TO SOCIOLOGY - HONORS**

Units: 3.00 - UC:CSU, May Be Taken Once for Credit

*Recommended Preparation: ENGL-101*

Examines small group interactions and cultural patterns of American and other societies. Additional reading, writing, and research techniques are required.

83348 02:30PM-05:35PM M J. Houston CCC-602  
**CCC** [This class meets at the CANYON COUNTRY CAMPUS on Sierra Highway.](#)83381 09:30AM-10:50AM TTH A. Marengo BONH-310  
**FIELD STUDIES CLASS. Mandatory on location field study will take place at Camp Tahquitz, south of Big Bear on 10/7 - 10/9.** The field study will replace 3 on-campus hours. Optional meal package for approximately \$50. Please visit [www.canyons.edu/fieldstudies](http://www.canyons.edu/fieldstudies) for information regarding students responsibilities and requirements. Students are responsible for their own food and transportation.**SOCI 101 INTRODUCTION TO SOCIOLOGY**

Units: 3.00 - UC:CSU, May Be Taken Once for Credit

Examines small group interactions and cultural patterns of American and other societies.

83281 08:00AM-09:20AM MW A. Mgerian BONH-302

83282 08:00AM-09:20AM TTH K. Coleman CCC-602  
**CCC** [This class meets at the CANYON COUNTRY CAMPUS on Sierra Highway.](#)

83283 08:00AM-11:05AM F A. Mgerian BONH-302

83285 09:30AM-10:50AM MW P. Williams-Paez BONH-302

83291 11:00AM-12:20PM MW R. Wonser CCC-602  
**CCC** [This class meets at the CANYON COUNTRY CAMPUS on Sierra Highway.](#)

83287 11:00AM-12:20PM MW M. Valentine BONH-310

83289 11:00AM-12:20PM TTH P. Williams-Paez BONH-302

83295 12:30PM-01:50PM MW P. Williams-Paez BONH-302

83302 12:30PM-01:50PM TTH D. Loprieno CCC-602  
**CCC** [This class meets at the CANYON COUNTRY CAMPUS on Sierra Highway.](#)

83303 02:00PM-03:20PM MW S. Helfing BONH-310

83304 02:30PM-05:35PM W D. Loprieno CCC-602  
**CCC** [This class meets at the CANYON COUNTRY CAMPUS on Sierra Highway.](#)83305 03:30PM-04:50PM TTH G. Pulliam CCC-602  
**CCC** [This class meets at the CANYON COUNTRY CAMPUS on Sierra Highway.](#)

83306 06:00PM-09:05PM M A. Im BONH-310

83307 06:00PM-09:05PM TH K. Bonfiglio CCC-602  
**CCC** [This class meets at the CANYON COUNTRY CAMPUS on Sierra Highway.](#)83371 06:00PM-09:05PM TTH P. Williams-Paez BONH-302  
08/23/11-10/13/11

83374 - M. Branda-Gherardi -

**ONLINE CLASS.** For class information, see [www.canyons.edu/distancelearning](http://www.canyons.edu/distancelearning).**Please Drive Carefully!**  
**On-Campus speed limit**  
**is no more than 15 mph!**

83372 - N. Buriel -  
 08/22/11-10/15/11  
**ONLINE CLASS.** For class information, see [www.canyons.edu/distancelearning](http://www.canyons.edu/distancelearning).

83373 - T. Haugen -  
 10/17/11-12/10/11  
**ONLINE CLASS.** For class information, see [www.canyons.edu/distancelearning](http://www.canyons.edu/distancelearning).

**SOCI 102 INTRODUCTION TO SOCIOLOGICAL RESEARCH METHODS**

Units: 3.00 - UC:CSU, May Be Taken Once for Credit  
 Introduces scientific methods used in contemporary sociological research with focus on ethics, quantitative and qualitative research design, data collection, and data analysis.

83308 09:30AM-10:50AM MW M. Valentine BONH-310  
 83309 06:30PM-09:35PM T D. Little BONH-310

**SOCI 103 INTIMATE RELATIONSHIPS AND FAMILIES**

Units: 3.00 - UC:CSU, May Be Taken Once for Credit  
 Examines the various forms of intimate partner relationships that exist within a diverse, multicultural society, as well as the social constructs that apply to the definition, status, and legality of these partnerships.

83310 09:30AM-10:50AM TTH K. Coleman CCC-602  
**CCC** This class meets at the CANYON COUNTRY CAMPUS on Sierra Highway.

83312 11:00AM-12:20PM TTH A. Marengo BONH-310  
 83315 12:30PM-01:50PM MW S. Helfing BONH-310

83317 06:30PM-09:35PM T K. Bonfiglio CCC-602  
**CCC** This class meets at the CANYON COUNTRY CAMPUS on Sierra Highway.

83379 - A. Marengo -  
 08/22/11-09/24/11  
**ONLINE CLASS.** This section is part of the GO program. These sections are short-term, intensive sections. For more information on the GO program visit [www.canyons.edu/GO](http://www.canyons.edu/GO).

**SOCI 105 MULTICULTURALISM IN THE UNITED STATES**

Units: 3.00 - UC:CSU, May Be Taken Once for Credit  
 Explores several levels of cultural diversity in the context of a complex, modern society, while providing the skills to understand and live in an increasingly multicultural U.S. society.

83375 - T. Alvarado -  
**ONLINE CLASS.** For class information, see [www.canyons.edu/distancelearning](http://www.canyons.edu/distancelearning).

**SOCI 108 THINKING CRITICALLY ABOUT SOCIAL ISSUES**

Units: 3.00 - UC:CSU, May Be Taken Once for Credit  
*Prerequisite: ENGL-101*  
 Compares and contrasts the content, meaning and interpretation of social phenomena as reported by the media and scientific community. UC credit limitation: PHILOS-205 and SOCI-108 combined, maximum credit one course.

83319 09:30AM-10:50AM TTH P. Williams-Paez BONH-302

**SOCI 110 SELF AND SOCIETY**

Units: 3.00 - UC:CSU, May Be Taken Once for Credit  
 Examines ways in which culture and socialization affect individual conduct.

83320 02:00PM-03:20PM TTH S. Helfing BONH-310

**SOCI 135 STATISTICS FOR THE SOCIAL SCIENCES**

Units: 3.00 - UC:CSU, May Be Taken Once for Credit  
*Prerequisite: MATH-070*  
 Examines methods used in sociology to gather quantitative data and to compute, interpret, apply, and present statistical analyses via the use of SPSS. UC credit limitation: BUS-291, ECON-291, MATH-140, PSYCH-135 and SOCI-135 combined, maximum credit one course.

83321 09:30AM-10:50AM MW A. Marengo HSLH-302

**SOCI 136 FIELD EXPERIENCE IN QUALITATIVE RESEARCH**

Units: 3.00 - CSU, May Be Taken 2 Times  
*Recommended Preparation: SOCI-102*  
 Integrates lecture and field experience to enable students to learn and practice qualitative research skills. Field trips are required.

83322 08:00AM-11:25AM TTH T. Alvarado UCEN-313  
This class meets in the Dr. Dianne G. Van Hook University Center located on the south end of the Valencia campus. Allow plenty of passing time between classes.

**SOCI 150 INTRODUCTION TO CRIMINOLOGY**

Units: 3.00 - UC:CSU, May Be Taken Once for Credit  
 Examines the definition of crime and its violations as well as laws and methods used to control criminal behavior.

83328 08:00AM-09:20AM MW R. Wonser CCC-602  
**CCC** This class meets at the CANYON COUNTRY CAMPUS on Sierra Highway.

83376 - K. Coleman -  
**ONLINE CLASS.** For class information, see [www.canyons.edu/distancelearning](http://www.canyons.edu/distancelearning).



## SOCI – SOLAR

### SOCI 200H INTRODUCTION TO WOMEN'S STUDIES HONORS

Units: 3.00 - UC:CSU, May Be Taken Once for Credit

*Recommended Preparation: ENGL-101 or ENGL-101H*

Provides an overview of the academic field of women's studies, including the topics of socialization, communication, politics, crime, sexuality, and religion. Additional reading, writing, and research techniques are required.

83349 02:00PM-03:20PM TTH T. Gardner BONH-302

### SOCI 200 INTRODUCTION TO WOMEN'S STUDIES

Units: 3.00 - UC:CSU, May Be Taken Once for Credit

Provides an overview of the academic field of women's studies, including the topics of socialization, communication, politics, crime, sexuality, and religion.

83332 11:00AM-12:20PM TTH T. Gardner CCC-602  
**CCC** This class meets at the CANYON COUNTRY CAMPUS on Sierra Highway.

83333 12:30PM-01:50PM TTH S. Helfing BONH-310

83334 02:00PM-03:20PM MW M. Valentine BONH-302

83377 - T. Haugen -

**ONLINE CLASS.** For class information, see [www.canyons.edu/distancelearning](http://www.canyons.edu/distancelearning).

### SOCI 205 SOCIETY AND THE ENVIRONMENT

Units: 3.00 - UC:CSU, May Be Taken Once for Credit

Examines the interconnections between the social and biological features of society, as well as the sociological ramifications of environmental policies and cultural practices.

83335 06:00PM-09:05PM M J. Houston CCC-602  
**CCC** This class meets at the CANYON COUNTRY CAMPUS on Sierra Highway.

### SOCI 207 SOCIAL PROBLEMS

Units: 3.00 - UC:CSU, May Be Taken Once for Credit

Applies sociological principles and research processes to identify and analyze selected U.S. contemporary social problems.

83336 02:00PM-03:20PM TTH G. Pulliam CCC-602  
**CCC** This class meets at the CANYON COUNTRY CAMPUS on Sierra Highway.

### SOCI 208 SOCIOLOGY OF DEATH AND DYING

Units: 3.00 - UC:CSU, May Be Taken Once for Credit

Examines the cultural, social, and political meanings of death as it exists within the United States and abroad.

83338 12:30PM-01:50PM MW J. Houston CCC-602  
**CCC** This class meets at the CANYON COUNTRY CAMPUS on Sierra Highway.

### SOCI 210 SOCIOLOGY OF DEVIANCE, CRIME AND SOCIAL CONTROL

Units: 3.00 - UC:CSU, May Be Taken Once for Credit

Examines the topics of deviance, crime, and social control from a sociological perspective.

83342 09:30AM-10:50AM MW R. Wonser CCC-602  
**CCC** This class meets at the CANYON COUNTRY CAMPUS on Sierra Highway.

83380 06:30PM-09:35PM TTH G. Pulliam BONH-302  
10/18/11-12/08/11

### SOCI 230 SOCIOLOGY OF SEXUALITIES

Units: 3.00 - UC:CSU, May Be Taken Once for Credit

Explores sociological perspectives, theories, and research of sexuality from historical and contemporary social, cultural, and gendered contexts in a diverse society.

83344 11:00AM-12:20PM MW P. Williams-Paez BONH-302

83346 06:00PM-09:05PM W S. Helfing CCC-602  
**CCC** This class meets at the CANYON COUNTRY CAMPUS on Sierra Highway.

### SOCI 233 SOCIOLOGICAL ISSUES OF LIFE AND LONGEVITY

Units: 3.00 - UC:CSU, May Be Taken Once for Credit

Examines the life course of older adults and the aging process, including cultural, social, and political influences that shape the concepts of growing old.

83378 - A. Marengo -  
09/26/11-10/29/11

**ONLINE CLASS.** This section is part of the GO program.

These sections are short-term, intensive sections. For more information on the GO program visit [www.canyons.edu/GO](http://www.canyons.edu/GO).

## ■ SOLAR TECHNOLOGY ■

### SOLAR 101 INTRODUCTION TO ENERGY TECHNOLOGY

Units: 3.00 - CSU, May Be Taken Once for Credit

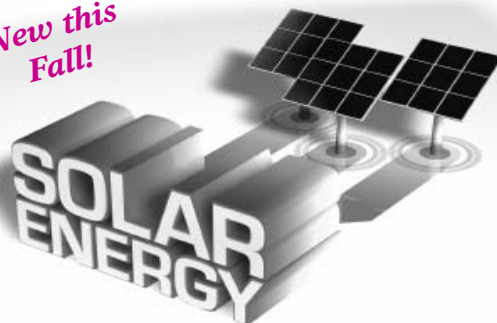
Introduces major types of energy and their sources and interrelationships while exploring concepts of renewability, sustainability, and environmental impacts.

83853 06:30PM-09:35PM M Staff CCC-701  
**CCC** This class meets at the CANYON COUNTRY CAMPUS on Sierra Highway.

## COC'S SOLAR PROGRAM

Find out how YOU can become part of a vibrant, growing industry!

New this Fall!



#### Information Meeting:

**Time/Date:** 7 - 8 p.m., Thursday, July 21  
**Location:** COC's Canyon Country Campus, Room 300  
17200 Sierra Highway, Canyon Country, CA 91351

**Walk-ins Welcome** **RSVP:** Nancy Duffy, 661-362-3131  
[nancy.duffy@canyons.edu](mailto:nancy.duffy@canyons.edu)