

## BIOSCI 221

### Bacterial Characteristics & Pictures

About the pictures of the plates:

- Try to understand how to interpret cultural characteristics.
- Do not try to compare your unknowns with these pictures to figure out your unknown. It is a very misleading thing to do.
- Take good observation notes while you are working with organisms before you start your unknowns.
- Batches of bacteria come from different strains and can take on varying characteristics, including colors and growth patterns.
  - Do not use test answers or charts from other semesters.
  - We switch batches every semester and your organism will not exhibit the same characteristics as those of the previous semester.
  - Your organisms are grown on tryptic soy agar (TSA). Many of these pictures are of organisms grown on nutrient agar (NA).
  - Organisms can change in appearance based on the age of the culture.
  - It is not good to try to compare your current unknown to a small picture that doesn't look exactly the same semester after semester and come up with an answer based on that!
  - Your grade depends on you doing the lab work; don't guess based on pictures or web sites.
- Use this table to define the cultural characteristics of your semesters' organisms.
  - Describe the unique characteristics of each organism.
  - Note the difference between your organisms and these pictures.
  - Note the similarity between your organisms and these pictures.

## Alcaligenes viscolactis



### CULTURAL CHARACTERISTICS

Gram Stain	
Background Stain	
Media used	
Color	
Texture	

Growth pattern

Observation Notes

## Bacillus cereus



### CULTURAL CHARACTERISTICS

Gram Stain	
Background Stain	
Media used	
Color	
Texture	

Growth pattern

Observation Notes

## Citrobacter freundii



### CULTURAL CHARACTERISTICS

Gram Stain	
Background Stain	
Media used	
Color	
Texture	

Growth pattern

Observation Notes

## Corynebacterium pseudodiphtheriticum



### CULTURAL CHARACTERISTICS

Gram Stain	
Background Stain	
Media used	
Color	
Texture	

Growth pattern

Observation Notes

## Enterobacter aerogenes



### CULTURAL CHARACTERISTICS

Gram Stain	
Background Stain	
Media used	
Color	
Texture	

Growth pattern

Observation Notes

## Escherichia coli



### CULTURAL CHARACTERISTICS

Gram Stain	
Background Stain	
Media used	
Color	
Texture	

Growth pattern

Observation Notes

## Klebsiella pneumoniae



### CULTURAL CHARACTERISTICS

Gram Stain	
Background Stain	
Media used	
Color	
Texture	

Growth pattern

Observation Notes

## Lactococcus lactis



### CULTURAL CHARACTERISTICS

Gram Stain	
Background Stain	
Media used	
Color	
Texture	

Growth pattern

Observation Notes

## Micrococcus luteus



### CULTURAL CHARACTERISTICS

Gram Stain	
Background Stain	
Media used	
Color	
Texture	

Growth pattern

Observation Notes

## Micrococcus roseus



### CULTURAL CHARACTERISTICS

Gram Stain	
Background Stain	
Media used	
Color	
Texture	

Growth pattern

Observation Notes

## Moraxella catarrhalis



### CULTURAL CHARACTERISTICS

Gram Stain	
Background Stain	
Media used	
Color	
Texture	

Growth pattern

Observation Notes

## Mycobacterium smegmatis



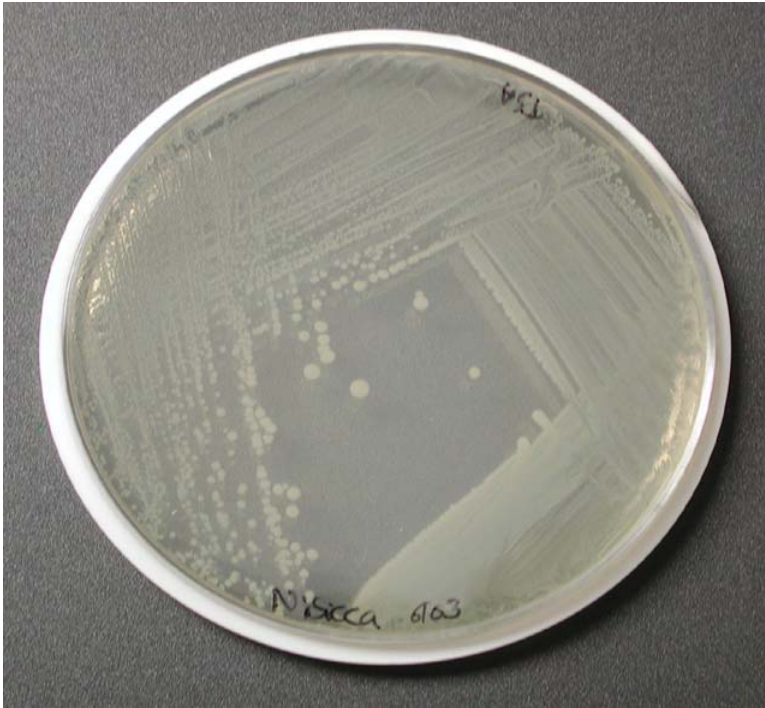
### CULTURAL CHARACTERISTICS

Gram Stain	
Background Stain	
Media used	
Color	
Texture	

Growth pattern

Observation Notes

## Neisseria sicca



### CULTURAL CHARACTERISTICS

Gram Stain	
Background Stain	
Media used	
Color	
Texture	

Growth pattern

Observation Notes

## Proteus vulgaris



### CULTURAL CHARACTERISTICS

Gram Stain	
Background Stain	
Media used	
Color	
Texture	

Growth pattern

Observation Notes

## Pseudomonas fluorescens



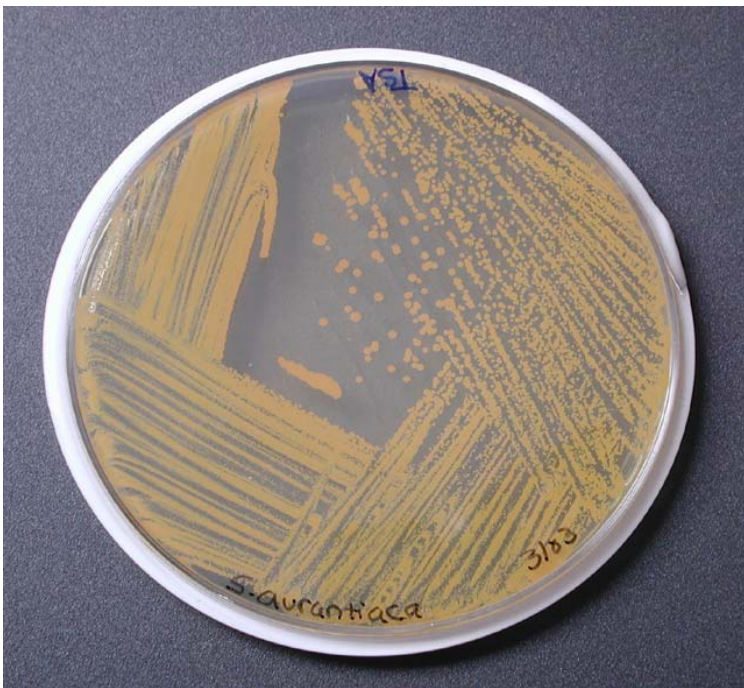
### CULTURAL CHARACTERISTICS

Gram Stain	
Background Stain	
Media used	
Color	
Texture	

Growth pattern

Observation Notes

## Sarcina aurantiaca



### CULTURAL CHARACTERISTICS

Gram Stain	
Background Stain	
Media used	
Color	
Texture	

Growth pattern

Observation Notes

## Serratia marcescens



### CULTURAL CHARACTERISTICS

Gram Stain	
Background Stain	
Media used	
Color	
Texture	

Growth pattern

Observation Notes

## Staphylococcus aureus



### CULTURAL CHARACTERISTICS

Gram Stain	
Background Stain	
Media used	
Color	
Texture	

Growth pattern

Observation Notes