



Social Psychology: Psychology 109 ~ 3 units ~ Spring 2012

Mondays/Wednesdays 9:30 am – 10:50 am, Section # 85798, Valencia Campus, Seco Hall 206

Instructor: Michelle La Brie, M.A.
Phone/Voice Mail: 661.362.5368 office voice mail
Email michelle.labrie@canyons.edu
Office Hours: Mon & Wed 11:00 am – 11:45 am, Valencia Campus, Mentry Hall 216
 Tues & Thur 8:30 am – 9:15 am, Valencia Campus, Mentry Hall 216
 Other times/locations are available by appointment

Office Location: Mentry Hall 216, Valencia Campus

Website: <http://www.canyons.edu/faculty/labriem>

Required Text & Materials

Required:

- Kassir, Fein & Markus (2010). Social Psychology, 8th Edition. New York: Houghton Mifflin-- **ISBN # 0-495-81240-4** available in the [COC Bookstore](#)
 You will find it helpful to bring your textbook to each class meeting.
- Study Guide is recommended: ISBN # 978-084-003-1662
- 4 Scantron 882 forms & #2 pencil, available in Bookstore

[Textbook Website](#)

COURSE DESCRIPTION: An introduction to the psychological theories, psychological research and applications in major areas of social psychology with an emphasis on individual and cultural differences in social cognition and social behavior as seen by the discipline of psychology.

Student Learning Outcomes:

- Examine the major concepts, theoretical perspectives, empirical findings, research in social psychology.
- Analyze and apply social psychology principles of social cognition, social perception and social influence.

Note: Subject matter discussed in this course is mature, sensitive and controversial in nature. Some social psychological topics such as: aggression, domestic violence, prejudice, discrimination, racism, white supremacy, hate crimes, bullying and imprisonment may be objectionable to some students. This should be considered prior to enrolling in this course. Continued enrollment in the course verifies your readiness to analyze and discuss these mature topics.

COURSE CALENDAR:

<u>Date</u>	<u>Lecture/Discussion Topic(s)</u>	<u>Reading Assignment</u>
Feb 6	Course Introduction, Syllabus, Introducing Social Psychology	
Feb 8	Chapter 1: Introducing Social Psychology/Chapter 3: The Social Self	Chapter 1
Feb 13	Chapter 3: The Social Self	Chapter 3
Feb 15	Chapter 3: The Social Self /Chapter 4: Perceiving Persons	Chapter 4
Feb 20	***College Holiday – No Class*** ***February 21 – Add deadline***	
Feb 22	Chapter 4: Perceiving Persons	Chapter 4
Feb 27	Chapter 4: Perceiving Persons	Chapter 2
Feb 29	Chapter 2: Social Psychology Research	Chapter 2

March 2nd – Deadline to Drop without a “W” on your transcript

Mar 5	Chapter 2: Social Psychology Research/Exam Review	Chapter 2
Mar 7	EXAM 1: Chapters 1, 2, 3, 4	
Mar 12	Chapter 8: Group Processes	Chapter 8
Mar 14	Chapter 6: Attitudes	Chapter 6
Mar 19	Chapter 6: Attitudes	Chapter 5 & 6
Mar 21	Chapter 5: Stereotypes, Prejudice & Discrimination	Chapter 5
Mar 26	Chapter 5: Stereotypes, Prejudice & Discrimination	Chapter 5
	Critical Thinking Journals 1-3 DUE	
Mar 28	Chapter 5: Stereotypes, Prejudice & Discrimination/Exam Review	Chapter 5
	March 30th– Deadline to Drop with a “W” on your transcript. After this date, you will receive a grade in the course.	
Apr 2,4	***Spring Break -- No Class***	
Apr 9	EXAM 2: Chapters 8, 6, 5	
Apr 11	Chapter 7: Conformity	Chapter 7
Apr 16	Chapter 7: Conformity	Chapter 7
Apr 18	Chapter 7: Conformity: Cults	Chapter 7
Apr 23	Chapter 9: Attraction & Close Relationships	Chapter 9
Apr 25	Chapter 9: Attraction & Close Relationships	Chapter 9
Apr 30	Chapter 10: Helping Others	Chapter 10
May 2	Chapter 10: Helping Others/Exam Review	Chapter 10
May 7	EXAM 3: Chapters 7, 9, 10	
May 9	Chapter 11: Aggression	Chapter 11
May 14	Chapter 11: Aggression	Chapter 11
	Critical Thinking Journals 4-10 DUE	
May 16	Chapter 12: Law	Chapter 12
May 21	Chapter 12: Law/Chapter 14: Health	Chapter 12 & 14
May 23	Chapter 14: Health/Exam Review	Chapter 14
May 28	***College Holiday – No Class***	
May 30	EXAM 4: Chapters 11, 12, 14	

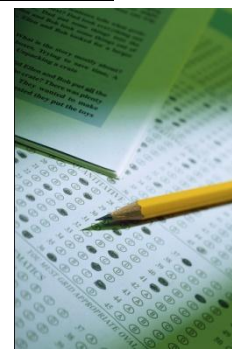
NOTE: This calendar could change due to any unforeseen circumstances. However, the student is responsible for all the material in the course even if the class does not meet due to an unpredictable event/occurrence. The student should follow the syllabus and be prepared for all exams on the dates noted regardless of whether the material was covered in class.

COURSE REQUIREMENTS/GRADING: Grades are determined by the number of points earned on Exams, Assignments related to course material, and a Critical Thinking Journal.

Exams:

There will be 4 exams consisting of 75 multiple choice/true/false questions which must be answered using a Scantron form 882 and a pencil. These can be purchased at the Bookstore and are your responsibility to provide. The dates of the exams are noted on the course calendar. Exams cover textbook, lecture, videos, class activities and handouts. Attendance for examinations is mandatory. **THERE ARE NO MAKE-UP EXAMS & ALL EXAMINATION SCORES CONTRIBUTE TO YOUR COURSE GRADE.** Four exams x 75 points each = 300 points.

- You will be given the entire class period to complete the exam. If you arrive late to class, you will not be given additional time to complete the exam.



- Hats, Sunglasses, hoods and mp3 players must be removed during the exams. Once the exam has begun, you may not leave the classroom or you will forfeit your exam.
- Make-up exams may be given only in unforeseen, extreme emergency situations including cases of severe illness (e.g. hospitalization) or undue hardship that is verified by an outside authority (e.g. death in the immediate family). Should one such conflict occur, requests for any make-up exams must be made to the instructor prior to the examination hour or as soon as humanly possible. Official written documentation of your hardship (e.g. from hospital, police) is required for any consideration of a make-up exam at the discretion of the instructor. Failure to notify the instructor within 24 hours of a missed exam may forfeit your opportunity to make up the exam.
- If you receive services through the DSPS Department and wish to exercise your right to extended time/distraction-reduced setting, I must see your accommodation letter at least one class prior to the test day you wish to utilize your accommodations so that alternate test taking arrangements can be made.

Assignments/Attendance:

Assignments will be given in class due at the beginning of the following class meeting. These assignments can be assessments, articles and discussion questions, self reflections and/or assignments related to in class learning outcomes and demonstrations. The instructor will collect the assignments and/or check the completion of the assignments and award points based on completion of the learning activity AND participation when the assignment is reviewed in class.

You must be present in class at the time of the learning activity in order to earn points for homework completion. Presence in class is where the learning takes place. You cannot completely benefit from the assignment if you are not present in class to participate in the analysis of the assignment's correct responses and the discussion that ensues as we apply the social psychological concepts to the lesson

- If you miss class when an assignment is reviewed, **you cannot make it up** (that's why it is highly recommended that you attend every class meeting). **I will not accept the assignment in my mailbox, via email, at the next class session, or via a peer in class.**
- If you arrive late to class and miss the assignment review, or did not finish the assignment when the lesson is presented, you forfeit the points for that assignment.
- If you are present and have the assignment checked off, but leave class before the assignment is reviewed, the assignment points will be deducted.

If you are not present in class when the assignment is reviewed, zero points are earned. It doesn't matter why you were absent; there are no "excused or unexcused" absences. Assignments can be accessed on the instructor's webpage noted at the top of the syllabus. If you miss class, check with a peer and the instructor's website for the assignment so that you can be prepared for the next day's lesson. The instructor will not receive missed assignments via email because the completion of the assignment is linked to the learning outcome that occurs during class time.

Critical Thinking Journal: Each student will complete a Critical Thinking Journal over the course of the term in which you will record your observations of others' behavior, apparent attitudes, thoughts and feelings, as well as your own thoughts feelings and behaviors. You may also use other media sources such as a television, movie, magazine or newspaper. Each journal entry will detail the observation/example, and explain which concept, theory, vocabulary term it demonstrates and how it demonstrates the concept or theory, and how this observation relates to social psychology.

Points will be earned for completed journal entries and the degree to which the social psychological concepts are interwoven in the examples/observations. The critical thinking journal is the evidence that you are applying the social psychological concepts to your life and to your day-to-day observations.

It is recommended that you complete your critical thinking journal as you move throughout the class. I recommend writing one per week starting in the third week of class. It will be at that point that you will begin to make connections between the text material, concepts and vocabulary and day-to-day life. Keep your journal as a running journal and add to it as you witness/observe social psychological concepts in action. This is the best way to approach the critical thinking journal because the information is fresh in your mind and the material is easy to integrate into your experience. If you try to re-create from memory several journal entries the night before it is due, you will likely be disappointed with your score because you will not be able to provide the depth of description and explanation that the critical thinking journal requires. Within each chapter, I will provide suggestions and prompts of questions that relate to the material to help you generate journal entries.

Ten Journal entries are required; see Journal Handout for more information. The Critical Thinking Journal is worth 200 points, the first 3 journal entries are due midterm, (please see the course calendar for specific dates). The remaining journals are due near the completion of the courses due by the date noted on the syllabus to be turned in during the class period. Late papers will not be accepted. **Do NOT email me your critical thinking journal. Emailing the paper to me in lieu of submitting a paper copy by the due date is not acceptable.** If you are not present in class on the day it is due, you may turn it in early, send it with a peer or submit it to my box at the switchboard. Be sure to have the switchboard date-stamp it

Extra Credit:

Up to 19.5 points can be earned by completing the [online practice quizzes](#) through the publisher's website. For each chapter, there is 1 set of multiple choice questions (19 questions) and 1 set of true/false questions (5 questions). Students who complete each SET with a 75% or better overall score will earn extra credit: 1 point for the successful completion of multiple choice questions answered and ½ point for the successful completion of true false questions answered, for a total of 1.5 points per chapter. Upon finishing each set of questions, the results must be emailed to the instructor at the email address listed at the top of the syllabus. At the same time, students are also emailed a copy of the results of each set of questions. It is suggested that students keep these emailed results to ensure that credit is awarded. The instructor is not responsible for technical difficulties arising from "lost" emails. Students can also print out the results and submit them on the day of the exam, if preferred. The deadline to submit online questions for extra credit is 30 minutes prior to the class start time on the date of the corresponding exam. For example: the deadline to submit extra credit for chapters 1, 2, 3, and 4 is **9:00 am** the day of Exam 1.

Grades:

You may follow your progress in class by accessing your grade online. After the first exam, an email will be sent to the email address on file via your "My Canyons" portal with a username and password to access your grades online. <http://sc.webgrade.classmanager.com/> In addition, the link to access your grades will be available on the instructor's website. The "My Canyons" portal email address is the college's primary method of communication; be sure that the portal contains your most up to date email address in order to receive important communications from the college.

<u>Grade distribution:</u>	<u>% of final grade</u>
4 Exams @ 75 points each	50 %
Assignments (requires Attendance in class the day the assignment is reviewed)	25 %
Critical Thinking Journal	25 %
<hr/>	
Totals:	100%

Final Grades are computed using a standard grading scale.

(90%) = A

(80%) = B

(70%) = C

(60%) = D

Below 60% = Failing Grade

Miscellaneous Notes:

- Continued enrollment in the course assumes complete understanding of the course syllabus, expectations and acceptance of policies regarding grading, exam dates, homework, critical thinking journal requirement, extra credit and the no make up exams policy.
- If you receive services through the DSPS Department and wish to exercise your right to extended time/distraction-reduced setting, I must see your accommodation letter at least one class prior to the test day you wish to utilize your accommodations so that alternate test taking arrangements can be made.
- If you are absent from class, you must obtain the assignment/missed material from a fellow student in class. The instructor will not email missed assignments.
- It is highly recommended that you retain all materials during the semester, especially scored and returned exam Scantrons and writing assignments.
- Computers are available for your use in the Library and in the TLC. If you find that your printer at home does not work – or is out of ink – you can e-mail your assignment to yourself, check your e-mail on campus, and print out your paper in the TLC or library before you come to class.
- If you choose to withdraw from class for any reason, it is your responsibility to initiate the withdrawal. If you simply stop attending class once the semester has begun, you may receive a failing grade.
- Class behavior: The following behaviors are unacceptable and are annoying. Please exercise the following courtesies:
- Please exercise the following courtesies:
 - Turn off all electronic devices that makes noise in class (ie: cell phone, Mp3 player). **Do not text message during class**; I will remove the distracting stimulus.
 - You may use a computer to take class notes, however, if the instructor discovers you are using websites outside the scope of the class, (including but not limited to: social networking websites, instant messaging, video streaming or email accounts) you forfeit the privilege to use the computer in class for the remainder of the term. Further, you may not use any type of recording device without the instructor's consent.
 - If you are sleeping in class, you will be asked to leave.
 - **Arrive to class on time.** If you must arrive late or leave early, please make an inconspicuous arrival/departure.



- Participate in class discussions. It makes the course more interesting and more fun for everyone if we all express our ideas and opinions.
- Treat all students and the instructor with respect by using appropriate college language and refraining from criticizing, disparaging, and/or embarrassing other students or the instructor.

STEPS TO SUCCESS:

1. Psychology 109 is a college level course that requires 2-3 hours of study time outside of class for every hour the class meets. Therefore, you will need to reserve 6-9 hours outside of class time to invest in reading and effectively studying the textbook, making flashcards, using the textbook website, making chapter outlines, completing research in the library, participating in study groups and receiving tutoring in the TLC lab. It is best to build this into your study schedule at the beginning of the term in order to experience success.
2. Come to class prepared. Preview the chapter before you come to class. This enables you to ask questions that were unclear and participate in the class discussion. The lecture material, class presentations and videos will make more sense if you've read the material.
3. Be an active participant in your education. Don't sit passively in class thinking about other material or personal worries. Use class time wisely by using active listening, note-taking, participating in class discussion and asking questions. I can help you develop active learning skills.
4. Utilize available resources. Use your book, study guides posted in Blackboard, & textbook website.
5. There are books on reserve in libraries of both campuses for in-room use if you do not have a textbook
6. Seek Help immediately if you fall behind in class. I am available to assist you; the TLC Lab on the 2nd floor of the Bonelli Hall (Valencia campus) and Room 306 (Canyon Country campus) is also available.

**Welcome to Social Psychology. It is my wish that you have an informative and enjoyable semester. Please come to see me if I can be of any assistance.
My office hours are for you.**

Critical Thinking Journal Guidelines-Social Psychology

Each student will create a journal in which you will record your observations of others' behavior, apparent attitudes, thoughts and feelings, as well as your own thoughts feelings and behaviors, **as they relate to social psychology.** The journal entry will note the observation/example, then explain how these observations are relevant or exemplify concepts in social psychology. Points will be earned for completed journal entries. Ten Journal entries are required and due on the date noted on the course syllabus.

The purpose if the assignment is to challenge yourself to begin to think like a social psychologist, to look at the world around you and ask yourself how social psychological analyses have the potential to help you better understand what you observe.

You will use the journal to record any observations of other people's behaviors, apparent attitudes and apparent feelings as well as your own thoughts, feelings and behaviors, and explain how these observations are relevant to social psychology, or HOW they exemplify social psychological concepts.

For example, you might go to a restaurant for lunch and take note of where people sit. Are people grouped by gender, race or group affiliation? Are physically attractive individuals surrounded by similarly attractive friends? Observe group dynamics at work. What do you notice about leadership styles? You might observe a friend behaving inconsistently with his/her attitude or realize that you have been rationalizing and justifying your own behavior. You might go to a party and note people's attempts at affiliation and intimacy. Or, you may observe the effects of alcohol on people's aggressiveness or deviant behavior. You may also use other media sources such as a television, movie, magazine or newspaper. For example, you can collect articles, editorials, cartoons, etc. and use this example to explain the concept from class or the readings. **Make sure you note: What does social psychological theory state about these topics? If so, what do they say?** Are your observations compared to or in contrast with what social psychological theory states? Explain why your observation is an illustration of that concept.

Specific format guidelines:

- **Submitting your paper: DO NOT email me your paper. Print your paper and submit it during class or at the campus Switchboard located in A Building, Valencia Campus on the due date. Late papers will not be accepted.**
- **Format:** Typed or word-processed, double spaced with standard 1" margins. Handwritten papers will not be accepted.
- Grammar counts. Although the writing style may be somewhat informal, your paper should reflect college level writing in regard to sentence structure, grammar, and punctuation. Consult with the Tutoring, Learning & Computing (TLC) Lab for assistance with grammar, sentence structure, etc, if you need help.
- **Cover Page:** Include a cover page with your paper's title, your name, date and the course title. Staple the paper together. PLEASE DO NOT put in a folder.
- Each Journal entry must be numbered (Journal #1, Journal #2, etc). Start each entry on a new page, or with a reasonable amount of space to indicate separate entries.
- **Journal entries will be evaluated by the degree to which the concepts from class and the text are integrated into what you observe or what you are feeling.**
- You may write about your own experiences as they relate to the concepts in the text, presented in class discussions, videos, websites, homework assignments or current events. You do not need to complete outside research.

Critical Thinking Journal Rubric

Each journal entry will be evaluated separately based on 3 categories.

1. **Item/Observation:** a **maximum of 4 points** can be earned for **thoroughly** explaining the item/observation/feeling that is the subject of the journal entry. You should explain with more than adequate detail so that it is clear to someone who did not observe the event. In addition, the item is a correct example of the theory concept you are asserting. College level grammar and writing style evident.
2. **Theory/Concept:** a **maximum of 4 points** can be earned for **thoroughly** explaining the concept, theory or social psychological item. Define and explain the term or the theory from the textbook/class that is discussed within the journal entry, with comprehensive detail so that it is more than just a one line descriptor. It is encouraged that you discuss multiple concepts that are related to the observation/item. Be sure to define them all, explain them and be certain that they are accurately portrayed in your observation/example. College level grammar and writing style evident.
3. **Integration:** a **maximum of 12 points** can be earned for **thoroughly** explaining how and why your observation or event is a demonstration of the social psychological concept(s). If a person read your critical thinking journal and has never completed Psychology 109, they would be able to understand how your observations are applications of important social psychological concepts and theories because you have explained it so well. An "outstanding" integration incorporates multiple concepts/theories with sophisticated analysis, using details and support from your observation. College level grammar and writing style evident.

Entry #1		Score for Entry #1:
Item/Observation	4 = strong, 3= satisfactory, 2 & under = does not meet standard	
Theory/Concept	4 = strong, 3= satisfactory, 2 & under = does not meet standard	
Integration/Thorough, Reflective Analysis/Application of Critical Thinking		
12 = outstanding, 11 = excellent, 10 = good, 9 = satisfactory, 8 = poor, 7 & under = does not meet standard		
Comments:		
Entry #2		Score for Entry #2:
Item/Observation	4 = strong, 3= satisfactory, 2 & under = does not meet standard	
Theory/Concept	4 = strong, 3= satisfactory, 2 & under = does not meet standard	
Integration/Thorough, Reflective Analysis/Application of Critical Thinking		
12 = outstanding, 11 = excellent, 10 = good, 9 = satisfactory, 8 = poor, 7 & under = does not meet standard		
Comments:		
Entry #3		Score for Entry #3:
Item/Observation	4 = strong, 3= satisfactory, 2 & under = does not meet standard	
Theory/Concept	4 = strong, 3= satisfactory, 2 & under = does not meet standard	
Integration/Thorough, Reflective Analysis/Application of Critical Thinking		
12 = outstanding, 11 = excellent, 10 = good, 9 = satisfactory, 8 = poor, 7 & under = does not meet standard		
Comments:		
Entry #4		Score for Entry #4
Item/Observation	4 = strong, 3= satisfactory, 2 & under = does not meet standard	
Theory/Concept	4 = strong, 3= satisfactory, 2 & under = does not meet standard	
Integration/Thorough, Reflective Analysis/Application of Critical Thinking		
12 = outstanding, 11 = excellent, 10 = good, 9 = satisfactory, 8 = poor, 7 & under = does not meet standard		
Comments:		