

UCLA



TAP Council

Fall 2011

Admissions Update

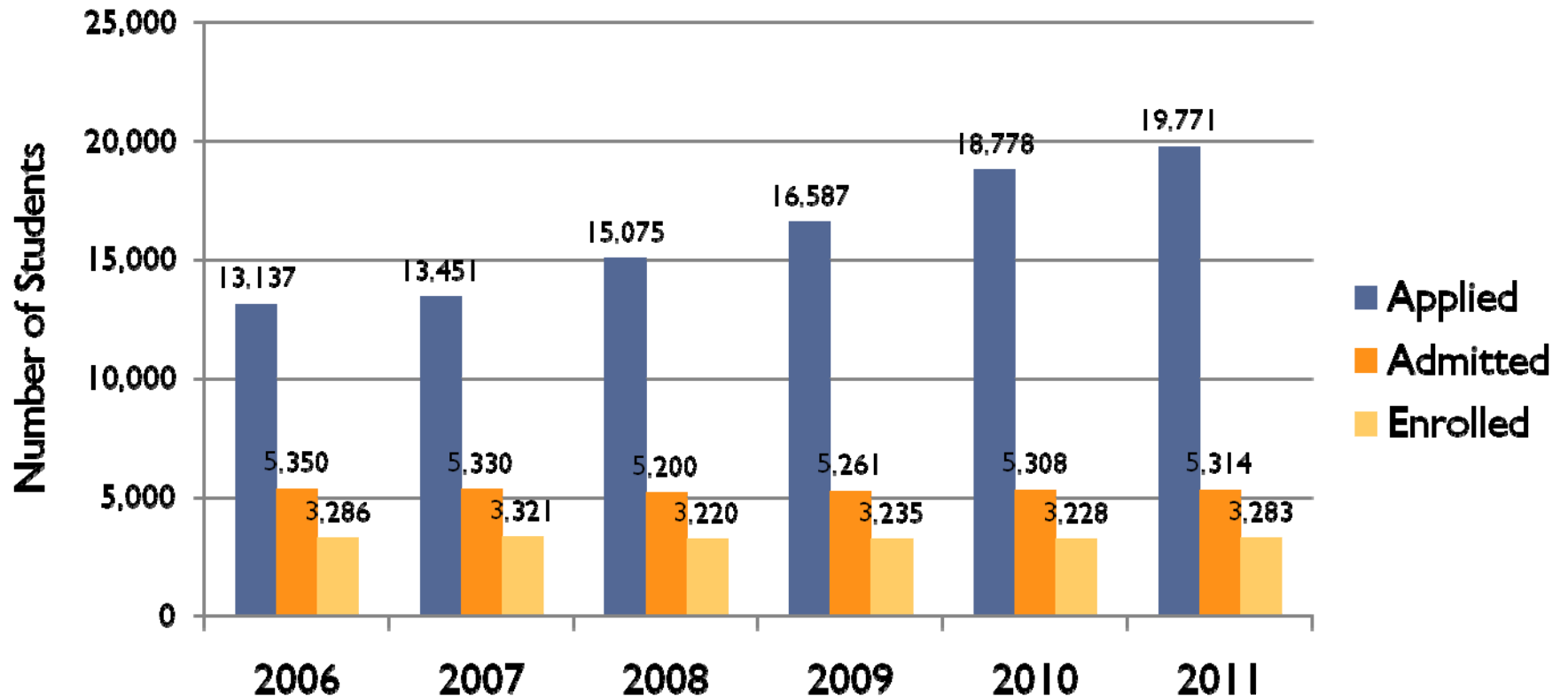
Undergraduate Admissions and Relations with Schools

Vu T. Tran
Kate Jakway Kelly

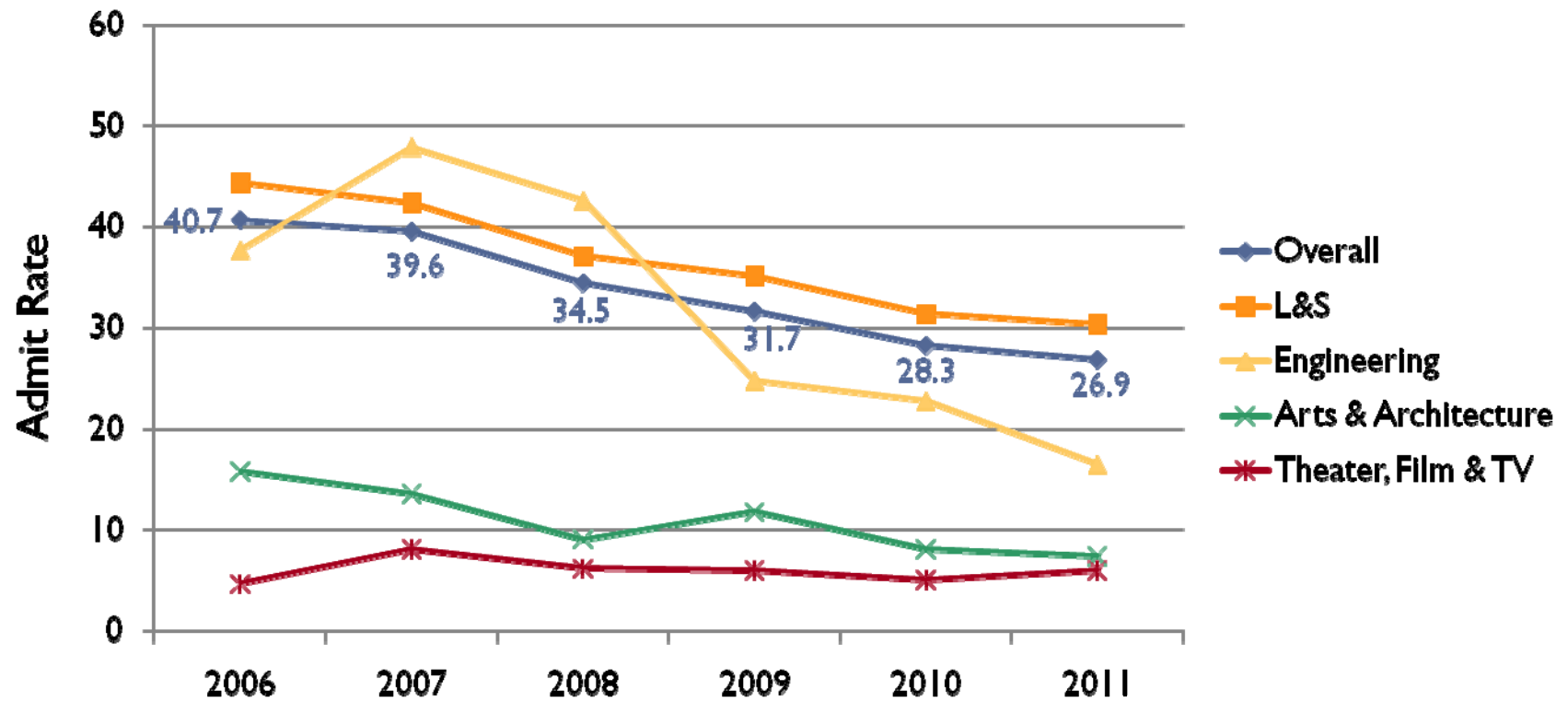
Overview

- UCLA transfer admission status
 - Admission trends and fall 2011 preliminary status
 - Other transfer admission issues
- Q & A

UCLA Transfer Admission Trends Fall 2006 - Fall 2011



Overall Admit Rate & Admit Rate by School Fall 2006 - Fall 2011



Transfer Admission Summary By School All Students, Fall 2006 - Fall 2007

Fall 2006

Fall 2007

	Number of applications	Number admitted	Number enrolled	Admission Rate	Enrollment rate	Number of applications	Number admitted	Number enrolled	Admission rate	Enrollment rate
College of Letters & Science	10,816	4,803	2,996	44.4%	62.4%	10,993	4,665	2,944	42.4%	63.1%
School of Engineering & Applied Science	1,048	395	168	37.7%	42.5%	1,041	499	240	47.9%	48.1%
School of the Arts & Architecture	557	88	72	15.8%	81.8%	711	97	75	13.6%	77.3%
School of Theater, Film & Television	639	30	28	4.7%	93.3%	657	53	48	8.1%	90.6%
School of Nursing	77	34	22	44.2%	64.7%	49	16	14	32.7%	87.5%
Total	13,137	5,350	3,286	40.7%	61.4%	13,451	5,330	3,321	39.6%	62.3%

Transfer Admission Summary By School All Students, Fall 2008 - Fall 2009

Fall 2008

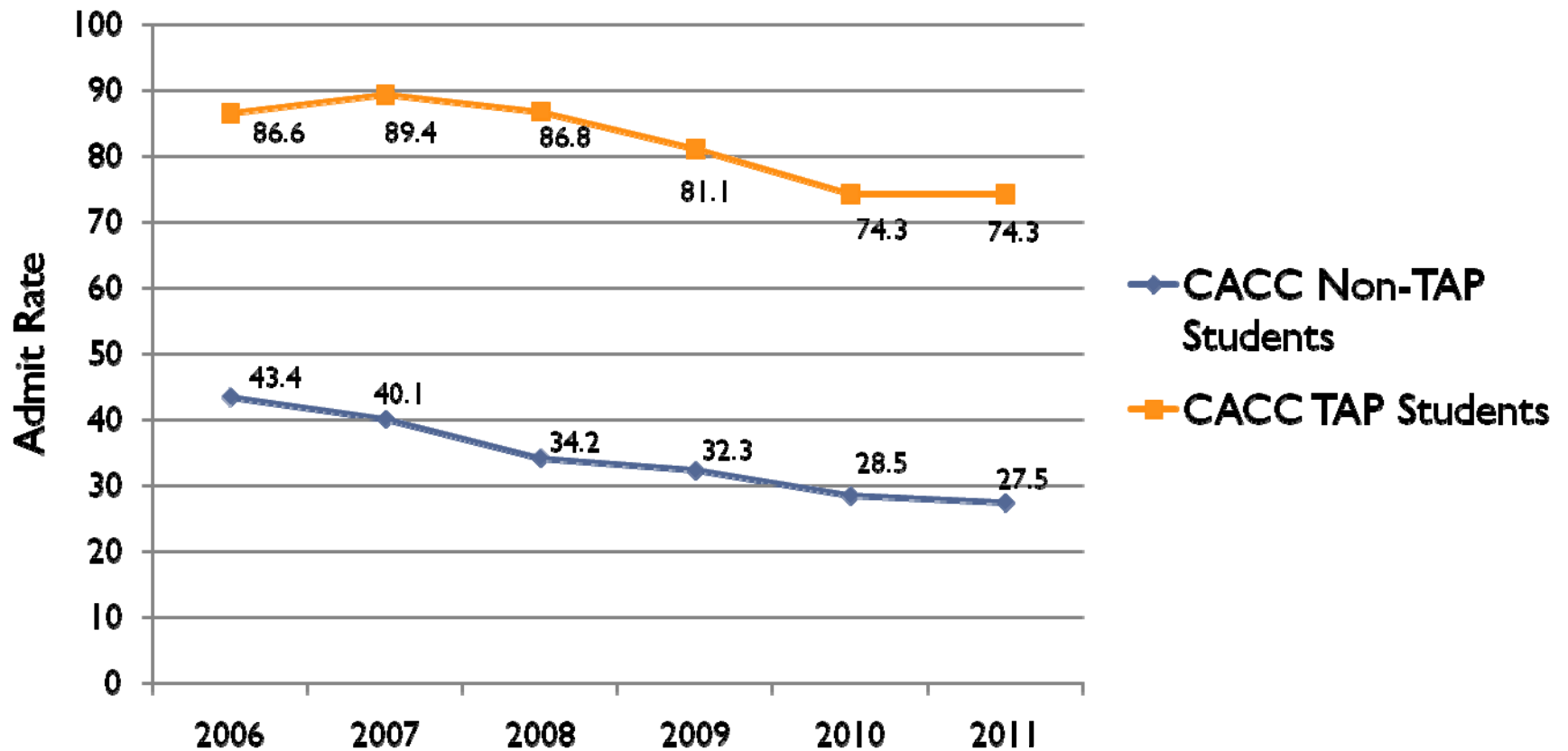
Fall 2009

	Number of applications	Number admitted	Number enrolled	Admission Rate	Enrollment rate	Number of applications	Number admitted	Number enrolled	Admission rate	Enrollment rate
College of Letters & Science	12,232	4,544	2,860	37.1%	62.9%	13,588	4,778	2,970	35.2%	62.2%
School of Engineering & Applied Science	1,174	500	240	42.6%	48.0%	1,342	333	141	24.8%	42.3%
School of the Arts & Architecture	848	77	60	9.1%	77.9%	757	89	70	11.8%	78.7%
School of Theater, Film & Television	695	43	38	6.2%	88.4%	769	46	43	6.0%	93.5%
School of Nursing	126	36	22	28.6%	61.1%	131	15	11	11.5%	73.3%
Total	15,075	5,200	3,220	34.5%	61.9%	16,587	5,261	3,235	31.7%	61.5%

Transfer Admission Summary By School All Students, Fall 2010 - Fall 2011

	Fall 2010					Fall 2011				
	Number of applications	Number admitted	Number enrolled	Admission Rate	Enrollment rate	Number of applications	Number admitted	Enrolled TARGETS	Admission rate	Enrollment rate
College of Letters & Science	15,247	4,782	2,941	31.4%	61.5%	16,008	4,867	2,954	30.4%	
School of Engineering & Applied Science	1,744	398	173	22.8%	43.5%	1,982	327	200	16.5%	
School of the Arts & Architecture	852	69	62	8.1%	89.9%	875	65	76	7.4%	
School of Theater, Film & Television	768	39	36	5.1%	92.3%	770	46	43	6.0%	
School of Nursing	167	20	16	12.0%	80.0%	136	9	10	6.6%	
Total	18,778	5,308	3,235	28.3%	60.8%	19,771	5,314	3,283	26.9%	

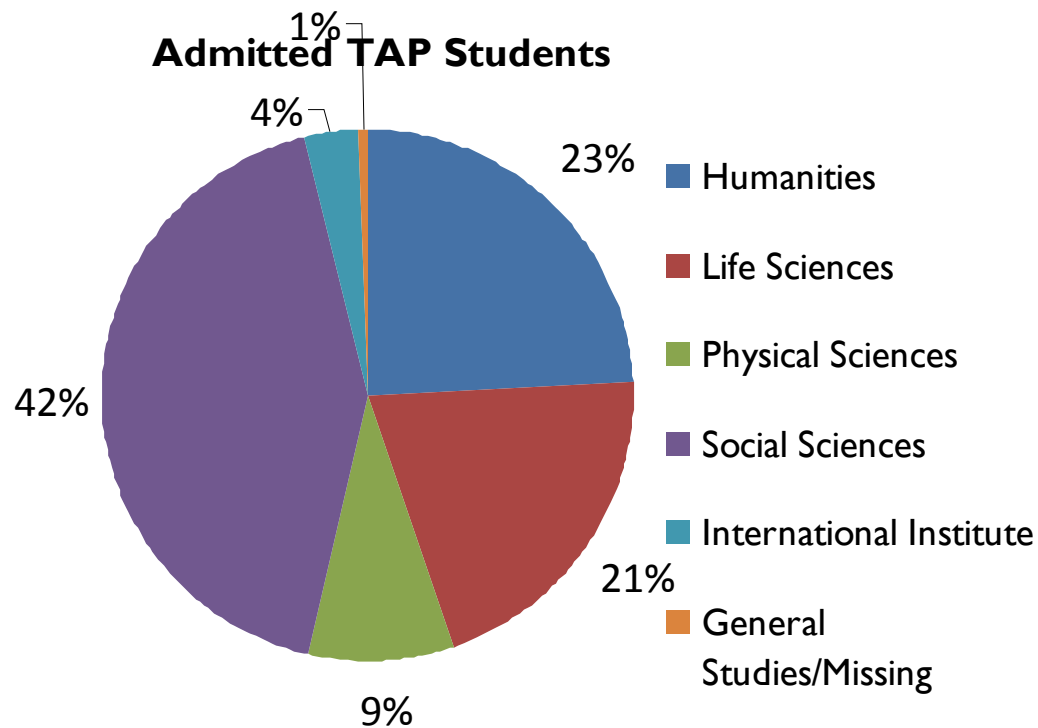
Transfer Admission Rate, College of Letters & Science TAP versus Non-TAP, Fall 2006 - Fall 2011



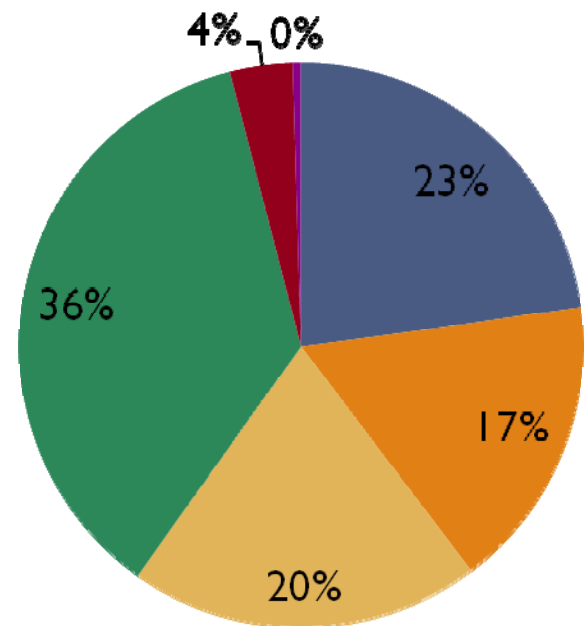
Transfer Admission, College of Letters & Science TAP versus Non-TAP, Fall 2006 - Fall 2011

	CA CC Non-TAP Students			CA CC TAP students		
	Number of applications	Number admitted	Admission rate	Number of applications	Number admitted	Admission rate
Fall 2011	12,617	3,473	27.5%	1,461	1,086	74.3%
Fall 2010	11,722	3,341	28.5%	1,496	1,112	74.3%
Fall 2009	10,140	3,277	32.3%	1,355	1,099	81.1%
Fall 2008	9,057	3,096	34.2%	1,214	1,054	86.8%
Fall 2007	8,289	3,321	40.1%	1,019	911	89.4%
Fall 2006	8,199	3,557	43.4%	1,031	893	86.6%

Distribution of Admitted Students By College of Letters & Science Division TAP versus Non-TAP, Fall 2011



Admitted Non-TAP Students



Transfer Admission By College of Letters & Science Division Humanities, Fall 2007 - Fall 2011

CA CC Non-TAP Students

CA CC TAP students

	Number of applications	Number admitted	Number enrolled	Admission rate	Enrollment rate	Number of applications	Number admitted	Number enrolled	Admission rate	Enrollment rate
2011	1,782	792		44.4%		295	263		89.2%	
2010	1,705	799	464	46.9%		274	251	157	91.6%	
2009	1,416	795	438	56.1%		226	209	132	92.5%	
2008	1,332	728	394	54.7%		198	190	120	96.0%	
2007	1,129	732	407	64.8%		167	156	87	93.4%	

Transfer Admission By College of Letters & Science Division Life Sciences, Fall 2007 - Fall 2011

CA CC Non-TAP Students

CA CC TAP Students

	Number of applications	Number admitted	Number enrolled	Admission rate	Enrollment rate	Number of applications	Number admitted	Number enrolled	Admission rate	Enrollment rate
2011	2,952	589		20.0%		318	222		69.8%	
2010	2531	541	325	21.4%	60.5%	313	234	187	74.8%	79.9%
2009	1,967	538	370	27.4%	68.8%	275	239	190	86.9%	79.5%
2008	1,776	449	284	25.3%	63.3%	284	245	194	86.3%	79.2%
2007	1,734	529	353	30.5%	66.7%	220	198	162	90.0%	81.8%

Transfer Admission By College of Letters & Science Division Physical Sciences, Fall 2007 - Fall 2011

CA CC Non-TAP Students

CA CC TAP Students

	Number of applications	Number admitted	Number enrolled	Admission rate	Enrollment rate	Number of applications	Number admitted	Number enrolled	Admission rate	Enrollment rate
2011	1,570	696		44.3%		114	95		83.3%	
2010	1,331	678	376	50.9%	55.5%	132	102	67	77.3%	65.7%
2009	1,053	613	309	58.2%	50.4%	93	79	49	84.9%	62.0%
2008	922	536	278	58.1%	51.9%	70	64	41	91.4%	64.1%
2007	874	516	242	59.0%	46.9%	57	54	36	94.7%	66.7%

Transfer Admission By College of Letters & Science Division Social Sciences, Fall 2007 - Fall 2011

CA CC Non-TAP Students

CA CC TAP Students

	Number of applications	Number admitted	Number enrolled	Admission rate	Enrollment rate	Number of applications	Number admitted	Number enrolled	Admission rate	Enrollment rate
2011	5,837	1,255		21.5%		675	461		68.3%	
2010	5,764	1,232	747	21.4%	60.6%	722	490	340	67.9%	69.4%
2009	5,232	1,196	759	22.9%	63.5%	704	526	386	74.7%	73.4%
2008	4,625	1,208	774	26.1%	64.1%	621	519	388	83.6%	74.8%
2007	4,232	1,358	893	32.1%	65.8%	527	459	337	87.1%	73.4%

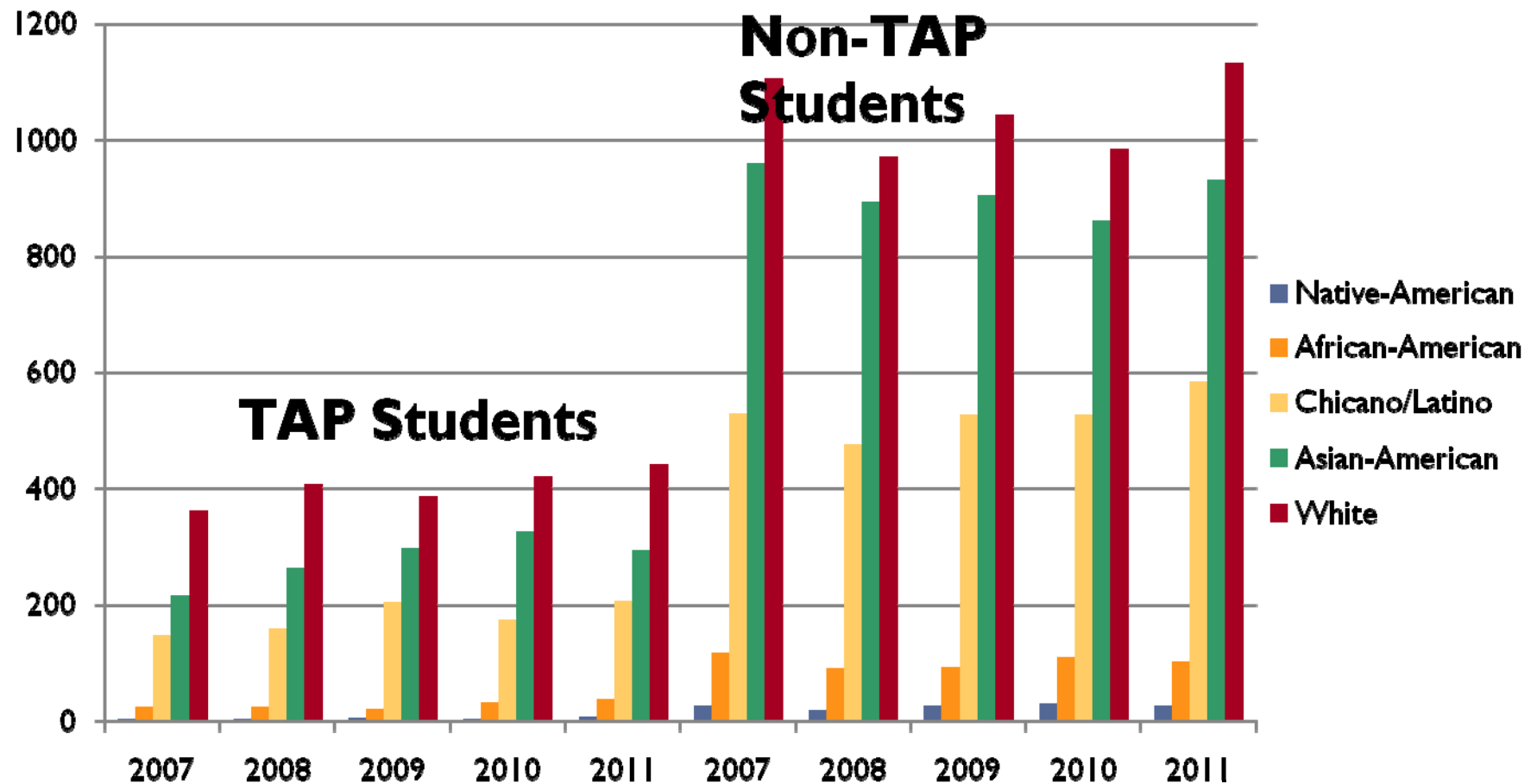
Transfer Admission By College of Letters & Science Division International Institute, Fall 2007 - Fall 2011

CA CC Non-TAP Students

CA CC TAP Students

	Number of applications	Number admitted	Number enrolled	Admission rate	Enrollment rate	Number of applications	Number admitted	Number enrolled	Admission rate	Enrollment rate
2011	386	125		32.4%		52	40		76.9%	
2010	317	77	36	24.3%	46.8%	46	32	20	69.6%	62.5%
2009	426	111	55	26.1%	49.5%	55	44	27	80.0%	61.4%
2008	364	153	92	42.0%	60.1%	40	35	26	87.5%	74.3%
2007	293	175	118	59.7%	67.4%	46	42	30	91.3%	71.4%

Transfer Admission by Ethnicity College of Letters & Science, Fall 2007 - Fall 2011



Ethnic Distribution, College of Letters & Science TAP versus Non-TAP Students, Fall 2009

	Non-TAP				TAP			
	Number of applications	Number admitted	Percentage of domestic applicants	Percentage of domestic admitted students	Number of applications	Number admitted	Percentage of domestic applicants	Percentage of domestic admitted students
Native American	81	26	0.9%	0.9%	6	6	0.5%	0.6%
African American	374	92	4.3%	3.3%	34	21	2.7%	2.1%
Chicano/Latino	1,621	526	18.5%	18.6%	246	205	19.8%	20.3%
<i>URM subtotal</i>	2,076	644	23.7%	22.8%	286	232	23.0%	23.0%
Asian American	2,881	905	32.9%	32.0%	389	298	31.2%	29.5%
White	3,069	1,044	35.0%	37.0%	454	387	36.5%	38.3%
Other	294	83	3.4%	2.9%	54	40	4.3%	4.0%
Unknown	447	153	5.1%	5.4%	62	53	5.0%	5.2%
Domestic subtotal	8,767	2,829	86.5%	86.3%	1,245	1,010	91.9%	91.9%
International	1,373	448	13.5%	13.7%	110	89	8.1%	8.1%
Total	10,140	3,277	100.0%	100.0%	1,355	1,099	100.0%	100.0%

Ethnic Distribution, College of Letters & Science TAP versus Non-TAP Students, Fall 2010

	Non-TAP				TAP			
	Number of applications	Number admitted	Percentage of domestic applicants	Percentage of domestic admitted students	Number of applications	Number admitted	Percentage of domestic applicants	Percentage of domestic admitted students
Native American	104	31	1.0%	1.1%	6	4	0.4%	0.4%
African American	516	109	5.1%	4.0%	44	32	3.2%	3.1%
Chicano/Latino	1,994	526	19.7%	19.2%	235	174	16.8%	16.9%
<i>URM subtotal</i>	2,614	666	25.8%	24.3%	285	210	20.4%	20.3%
Asian American	3,119	862	30.9%	31.5%	457	325	32.8%	31.5%
White	3484	985	34.5%	35.9%	545	421	39.0%	40.8%
Other	0	0			0	0		
Unknown	886	225	8.8%	8.3%	108	76	7.7%	7.4%
Domestic subtotal	10,103	2,738	86.2%	82.0%	1,395	1,032	93.3%	92.8%
International	1,619	603	13.8%	18.0%	101	80	6.7%	7.2%
Total	11,722	3,341	100.0%	100.0%	1,496	1,112	100.0%	100.0%

Ethnic Distribution, College of Letters & Science TAP versus Non-TAP Students, Fall 2011

	Non-TAP				TAP			
	Number of applications	Number admitted	Percentage of domestic applicants	Percentage of domestic admitted students	Number of applications	Number admitted	Percentage of domestic applicants	Percentage of domestic admitted students
Native American	114	27	1.0%	0.9%	13	8	1.0%	0.8%
African American	559	103	5.0%	3.6%	48	38	3.5%	3.7%
Chicano/Latino	2,490	584	22.5%	20.3%	299	207	21.7%	20.3%
<i>URM subtotal</i>	3,163	714	28.5%	24.8%	360	253	26.2%	24.8%
Asian American	3,624	931	32.7%	32.3%	413	293	29.9%	28.8%
White	3,951	1,132	35.6%	39.3%	563	442	40.9%	43.5%
Other	0	0			0	0		
Unknown	348	101	3.1%	3.5%	41	29	3.0%	2.8%
Domestic subtotal	11,086	2,878	87.9%	82.9%	1,377	1,017	94.3%	93.6%
International	1,531	595	12.1%	14.1%	84	69	5.7%	6.4%
Total	12,617	3,473	100.0%	100.0%	1,461	1,086	100.0%	100.0%

Academic Averages of Admits by TAP Status L & S Only

	Fall 2007	Fall 2008	Fall 2009	Fall 2010	Fall 2011
Admitted TAP Students	3.63	3.64	3.65	3.69	3.70
	100.4	100.7	102.1	103.6	106.0
Admitted Non-TAP Students	3.56	3.62	3.61	3.69	3.69
	100.4	100.4	102.0	102.2	104.8

