



## Fact Sheet

**Dr. Dianne G. Van Hook**  
Chancellor

### Basic Stats

**College of the Canyons founded:** 1969

**Valencia Campus size:** 153.4 acres

**College Service Area:** 367 square miles

**Valencia Campus Buildings:** 611,694 square feet

**Student Computer Labs:** 51

**Median Class Size:** 24

**Median Age of Students:** 26

#### Headcount:

- Fall 2008: 23,416
- Projected—2015: 33,471

#### Funded Growth Rate:

- 2008/2009 (est.) 9.4%

**Networked Computers:** 2,546

#### Intercollegiate Sports:

- Men's 8
- Women's 8

**Grants Received in 2008/2009:** \$7.1 Million

#### Degree Programs:

- AA/AS Majors: 62
- Certificates of Achievement: 47
- Certificates of Specialization: 31
- Certificates of Completion: 3

#### 2008/2009 Adopted Budget:

- General Fund Expenditures and Ending Fund Balance: \$110.1 Million
- All Fund Expenditures and Ending Fund Balance: \$210.4 Million

Web page: <http://www.canyons.edu>

#### Newest Program/New Curricula:

- Landscape Management & Maintenance
- Construction Inspection
- Water Systems Technology
- Theatre—Performance & General Options
- Liberal Arts & Sciences:
  - Social Science emphasis
  - Math/Science emphasis
  - Humanities emphasis

- Sociology
- Psychology
- Liberal Studies: Teacher Preparation (pending)
- Media Entertainment Arts (pending)

#### Performing Arts Programs:

- Choral groups, including Voices of the Canyons, COC Chamber Singers, Just Jazz, and Les Chanteuses.
- Instrumental groups include COC student orchestras and jazz ensembles.
- Dance includes COC dance ensembles, ballet (I & II), Jazz (I & II), and Hip Hop.
- Theater includes theater production, New Works and Solopolooza.

#### Performing Arts Center:

- Main Theater: 886 seats
- Experimental Theater: 125 seats
- Cost: \$18.3 Million
- “Green Room”: Make-up areas, showers and lockers; plus 1,100 sq. ft. costume/prop storage
- Grand Opening: October 15, 2004

#### Canyon Country Campus:

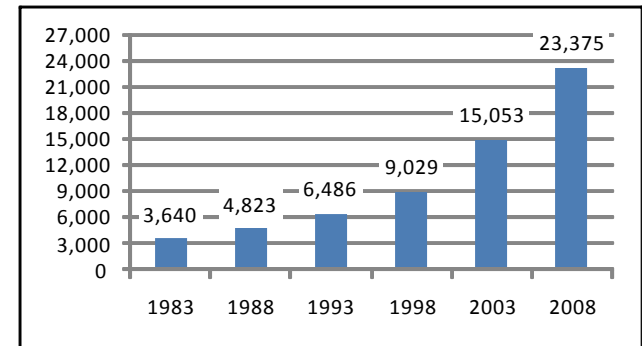
- Campus Opened: August 2007
- Campus Size: 70 acre site
- Facilities:
  - 26 Classrooms
  - 2 Science Labs
  - 1 Child Development Lab
  - Library
  - Tutoring, Learning Center
  - Student Services & Administrative Offices
  - Skills 4 Success Center
- Number of Sections Offered: 207 (Fall 2009)
- Number of Students: 3,315 (Fall 2008)

## Student Profile—Fall 2008

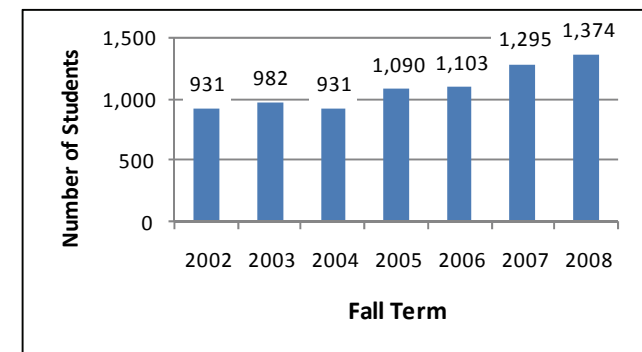
### Enrollment Characteristics

#### Fall 2008 Enrollment

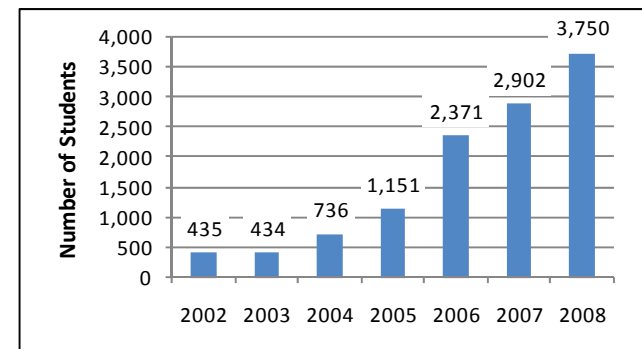
Headcount 23,375  
FTES 6,854



Total Fall Enrollment 1983-2008

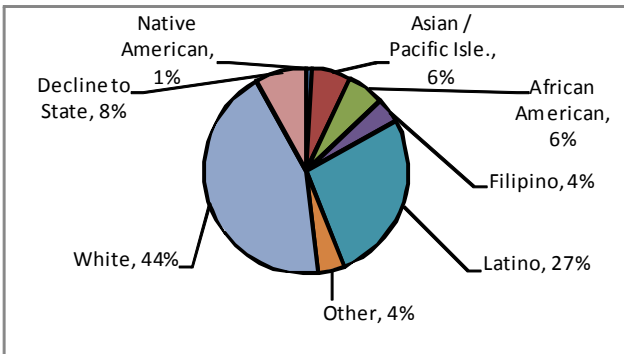


Concurrent Enrollment Trends: Fall 2002-Fall 2008



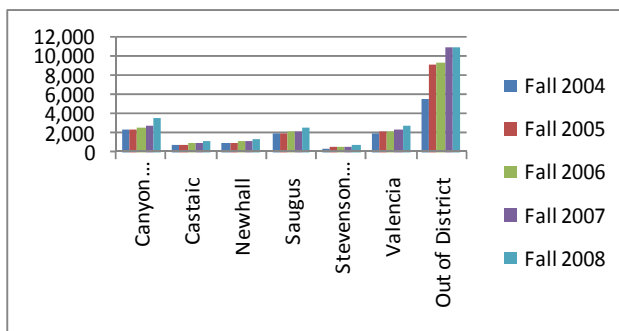
Online Student Enrollment Trends: Fall 2002-Fall 2008

## Student Demographics: Fall 2008



## Student Origin Fall 2008

	Fall 2004	Fall 2005	Fall 2006	Fall 2007	Fall 2008
Canyon Country	2,476	2,370	2,537	2,864	3,584
Castaic	754	791	902	961	1,133
Newhall	948	985	1,103	1,127	1,390
Saugus	2,084	2,080	2,140	2,249	2,571
Stevenson Ranch	483	543	613	675	794
Valencia	1,983	2,136	2,298	2,439	2,810
Out of District	5,505	9,120	9,430	10,985	11,093
<b>Total</b>	<b>14,233</b>	<b>18,025</b>	<b>19,023</b>	<b>21,300</b>	<b>23,375</b>



## Community of Students Residency

## Faculty & Staff Fall 2008

	Headcount
Full-Time Faculty	195
Adjunct Faculty	496
Classified Administrator	52
Educational Administrator	27

## Tuition & Financial Aid 2009 / 2010

### Resident Tuition & Fee History: Full-Time Students 2009/10 Tuition & Fees for Full-Time Students

<b>Resident</b>	\$774*
Fee per unit	\$26
Annual Student Center Fee	\$1 per unit/\$10 max
Health Fee (Fall & Spring)	\$17
Student Representation	\$1 per semester
<b>Out of State</b>	\$5,422*
Fee per unit	\$166 per unit plus \$26/unit
Annual Student Center Fee	\$1 per unit/\$10 max
Health Fee (Fall & Spring)	\$17
Student Representation	\$1 per semester

**2007/08 Financial Awards: \$6,282,363 to 2,803 students\*\***  
(2008/2009 data not available at time of printing)

\*Assumes 14 units in Fall and Spring, each for a total of 28 units.

\*\* Excludes BOGW

## Student-Right-To-Know Rates

In compliance with the Student-Right-to-Know and Campus Security Act of 1990 (Public Law 101-542), it is the policy of the Santa Clarita Community College District and College of the Canyons to make available its completion and transfer rates to all current and prospective students. Beginning in Fall 2005, a cohort of all certificate-, degree-, transfer-seeking, full-time, and first-time freshmen students were tracked over a three-year period. The table below illustrates the College's completion and transfer rates compared to the State's rates for the same time period.

	Fall 2005 Cohort	COC	State
<b>Transfer &amp; Completion Rate</b>		49.2%	42.0%

\*Note that these rates do not represent the success rates of the entire student population at COC as they exclude part-time students and students indicating "undecided" for their educational goal. Also, the rates do not account for students graduating after this three-year tracking period. As mandated by PL 101-542.

## Degrees Conferred 2005/2006—2007/2008

	2005/06	2006/07	2007/08*
<b>AA/AS</b>	957	875	933
<b>Certificates</b>	44	56	67

\*Certificates of Achievement and Specialization  
(2008/2009 data not available at time of printing)

2007/2008 Associate Degrees Awarded (AA / AS)	# Awarded	Percent
Accounting	60	6.4%
Administration of Justice	32	3.4%
American Sign Language Interpreting	2	0.2%
Animation	1	0.1%
Architectural Drafting & Technology	1	0.1%
Art	15	1.6%
Biological & Physical Sciences	40	4.3%
Computer Applications/Admin. Assistant	10	1.1%
Computer Networking	5	0.5%
Computer Science, Transfer	1	0.1%
Early Childhood Education	22	2.4%
Engineering, transfer	3	0.3%
English	22	2.4%
Film/Video Production	5	0.5%
Fire Technology	26	2.8%
French	3	0.3%
Graphic Design	3	0.3%
History	9	1.0%
Hotel & Restaurant Management	1	0.1%
Hotel Management	1	0.1%
Human Resources Management	5	0.5%
Interior Design & Merchandising	5	0.5%
Kinesiology	4	0.4%
Library Media Technology	2	0.2%
Manufacturing Technology	1	0.1%
Marketing	6	0.6%
Mathematics	17	1.8%
Drafting	1	0.1%
Multimedia	3	0.3%
Music	2	0.2%
Paralegal Studies	7	0.8%
Photography	7	0.8%
Real Estate	5	0.5%
Registered Nurse	91	9.8%
RTVF: Audio/Radio Production	2	0.2%
Small Business Mgmt	10	1.1%
Social Science	54	5.8%
Spanish	2	0.2%
Transfer Studies	441	47.3%
Water Systems Technology	2	0.2%
Welding Technology	4	0.4%

Certificates Awarded*	#	Percent
Administration of Justice	1	1.7%
Business	1	1.7%
Communication Studies	8	13.3%
Computer Information Technology	8	13.3%
Computer Networking	16	26.7%
Early Childhood Education	23	38.3%
Fire Technology	1	1.7%
Interior Design & Merchandising	3	5.0%
Manufacturing Technology	4	6.7%
Nursing	1	1.7%
Photography	1	1.7%

\*Certificates of Achievement and Specialization