



DEAN'S SYMPOSIUM

DEVELOPING YOUR ROLE IN PROVIDING SOCIAL AND ECONOMIC MOBILITY FOR CALIFORNIA

SPONSORED BY
CALIFORNIA COMMUNITY COLLEGE CHANCELLOR'S OFFICE, DIVISION OF
WORKFORCE AND ECONOMIC DEVELOPMENT
&
COLLEGE OF THE CANYONS

JANUARY 12, 2018

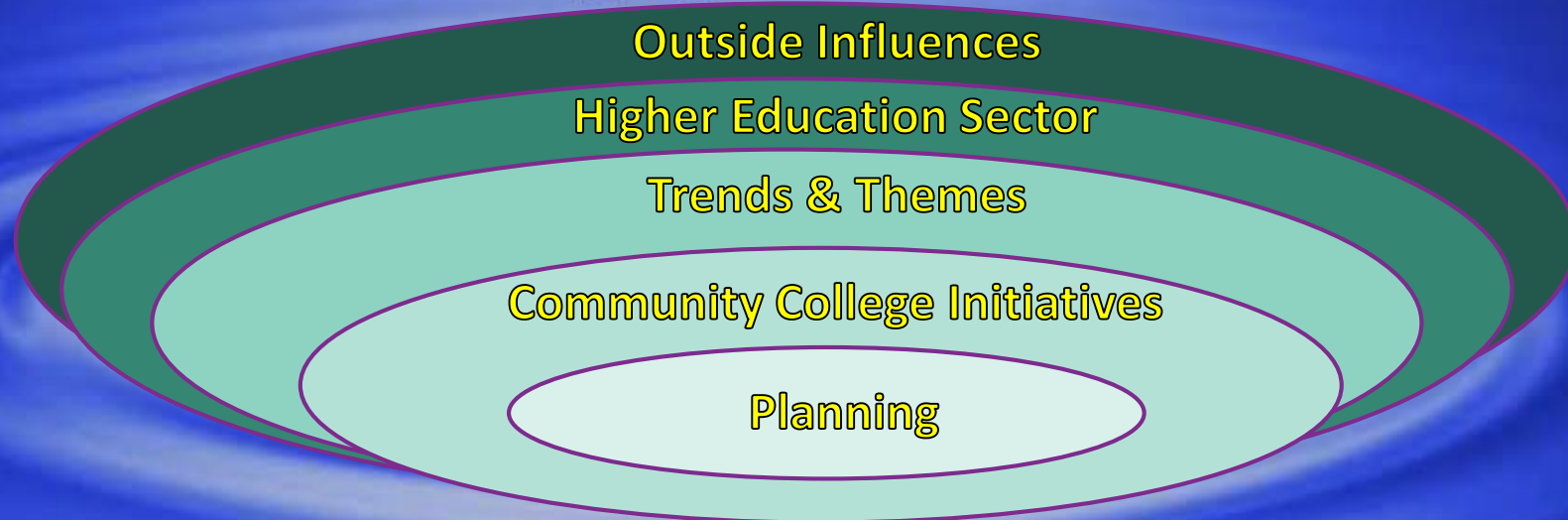
THE BIG PICTURE

Change is All Around Us & The Pace is Not Slowing Down!

Did you Know?



The Ripple Effect

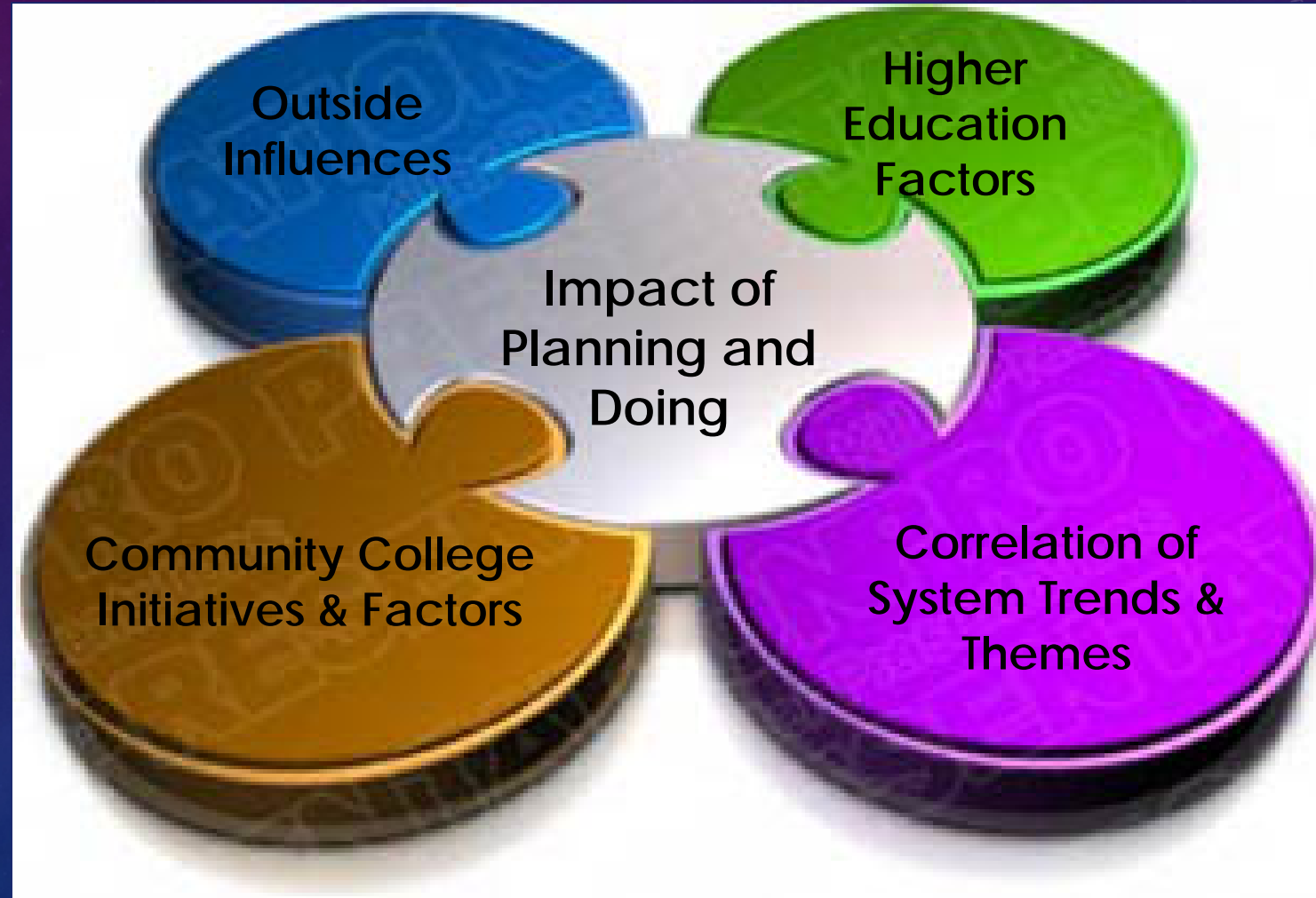


ONE SMALL CHANGE

CAN HAVE AN ENORMOUS IMPACT

THE BIG PICTURE - FITTING THE PIECES OF THE PUZZLE TOGETHER

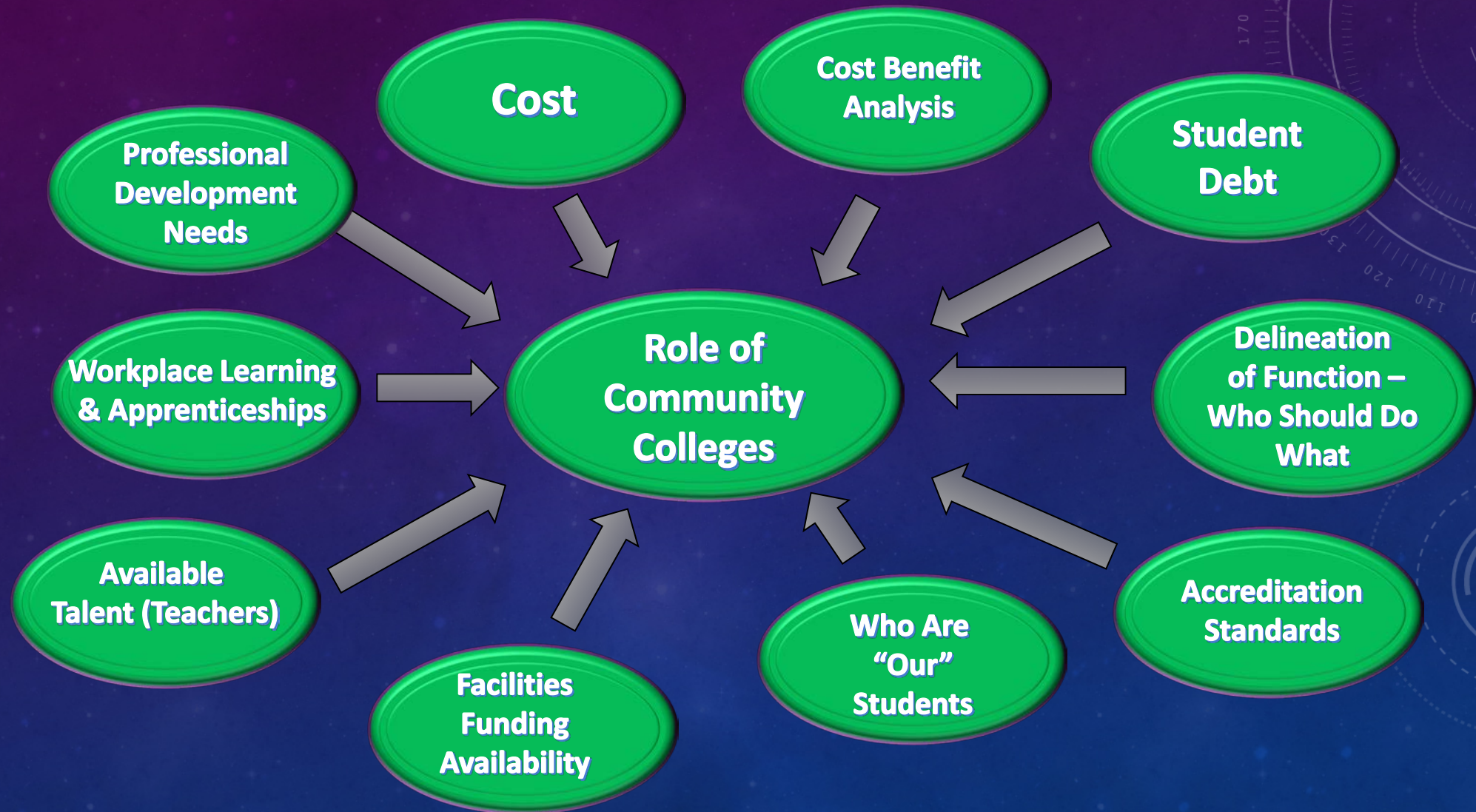
Bringing the Key Elements together makes your college more organized, cohesive and stronger!



The Larger Context: Outside Influences



The Education Sector: Higher Education Factors



The New Reality: Correlation of System Trends & Themes

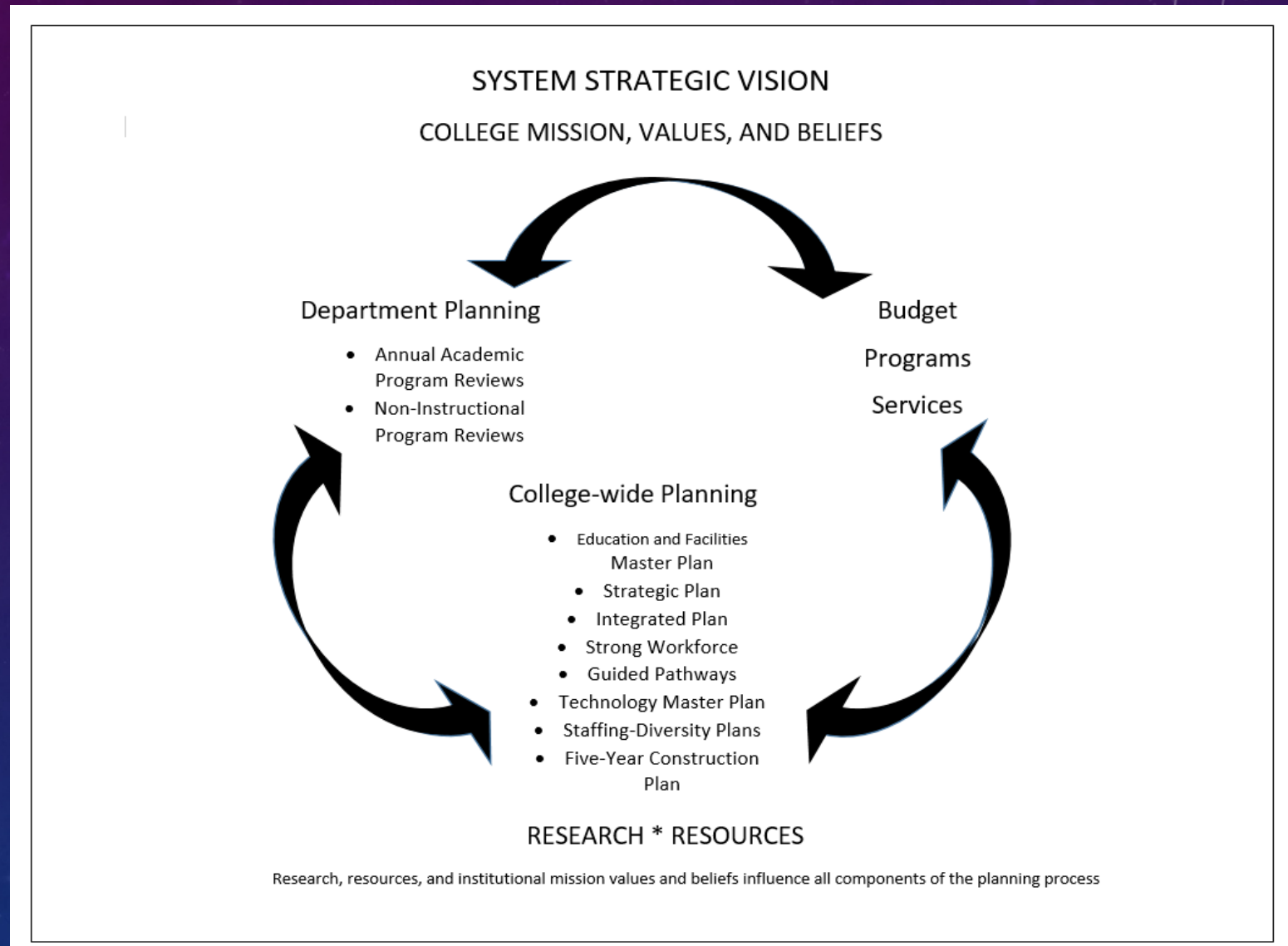


Demands Paying Attention, Flexibility, Nimbleness, and Quick Response Time

Community College Initiatives



THE CYCLE OF PLANNING



PLANNING GETS RESULTS

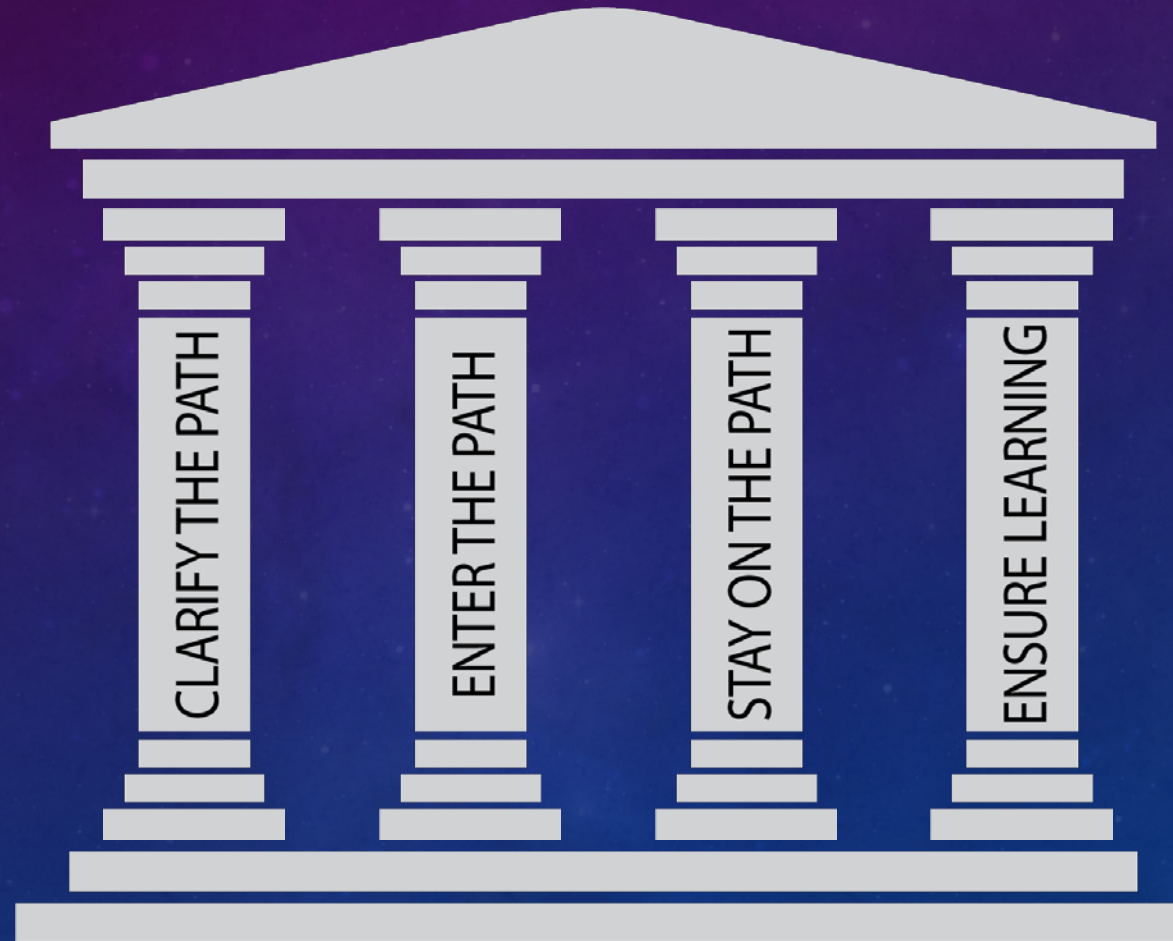


THE INITIATIVE THAT IS FIRST AND FOREMOST IN OUR FACES TO BE INTEGRATED INTO OUR SYSTEMS NOW IS:

PATHWAYS

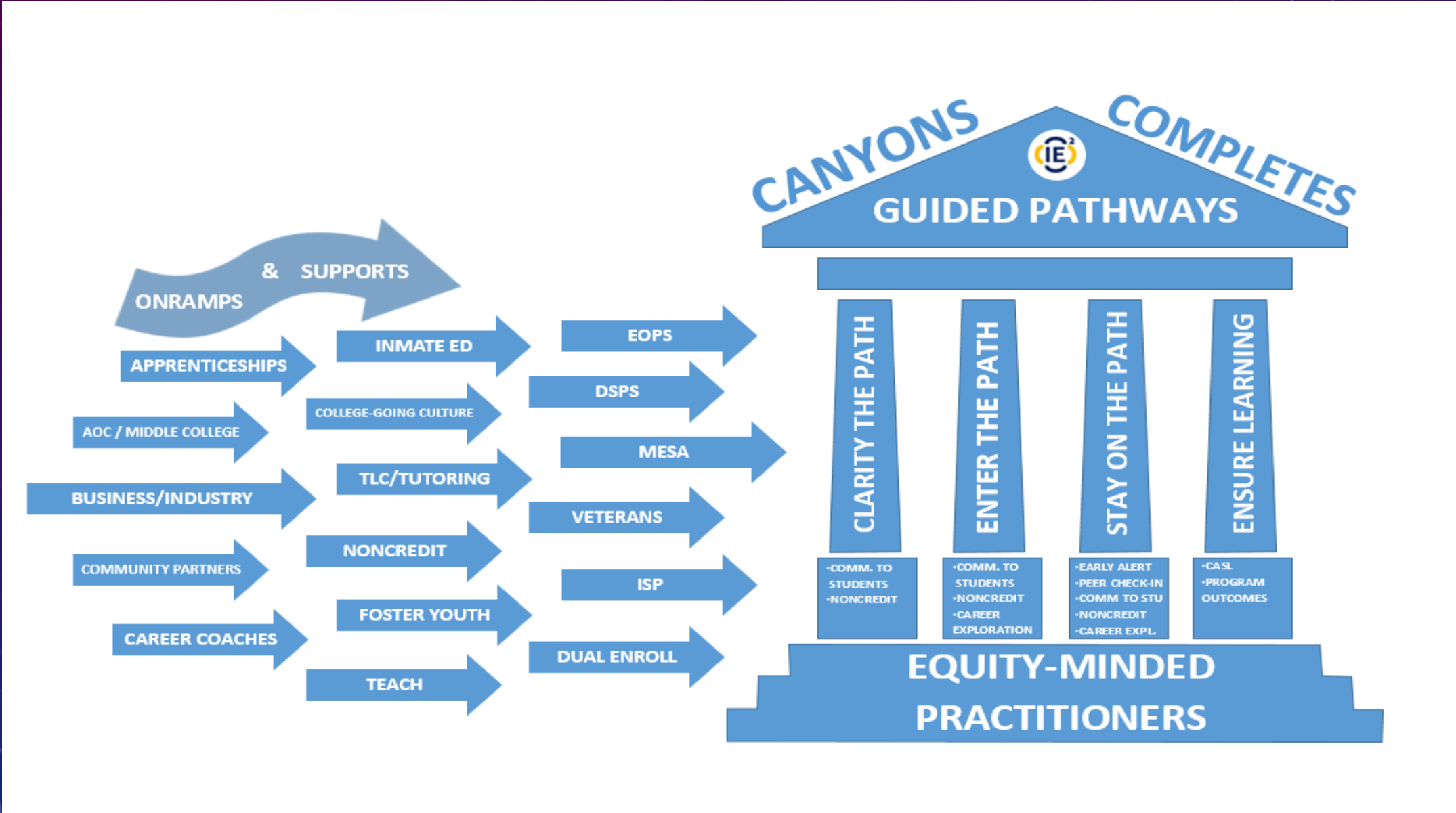
Four Pillars of Guided Pathways (steps):

1. **Clarify the path:** Create clear curricular pathways to employment and further education.
2. **Enter the Path:** Help students choose and enter their pathway.



3. **Stay on the path:** Help students stay on their path.
4. **Ensure learning:** Ensure that learning is happening with intentional outcomes.

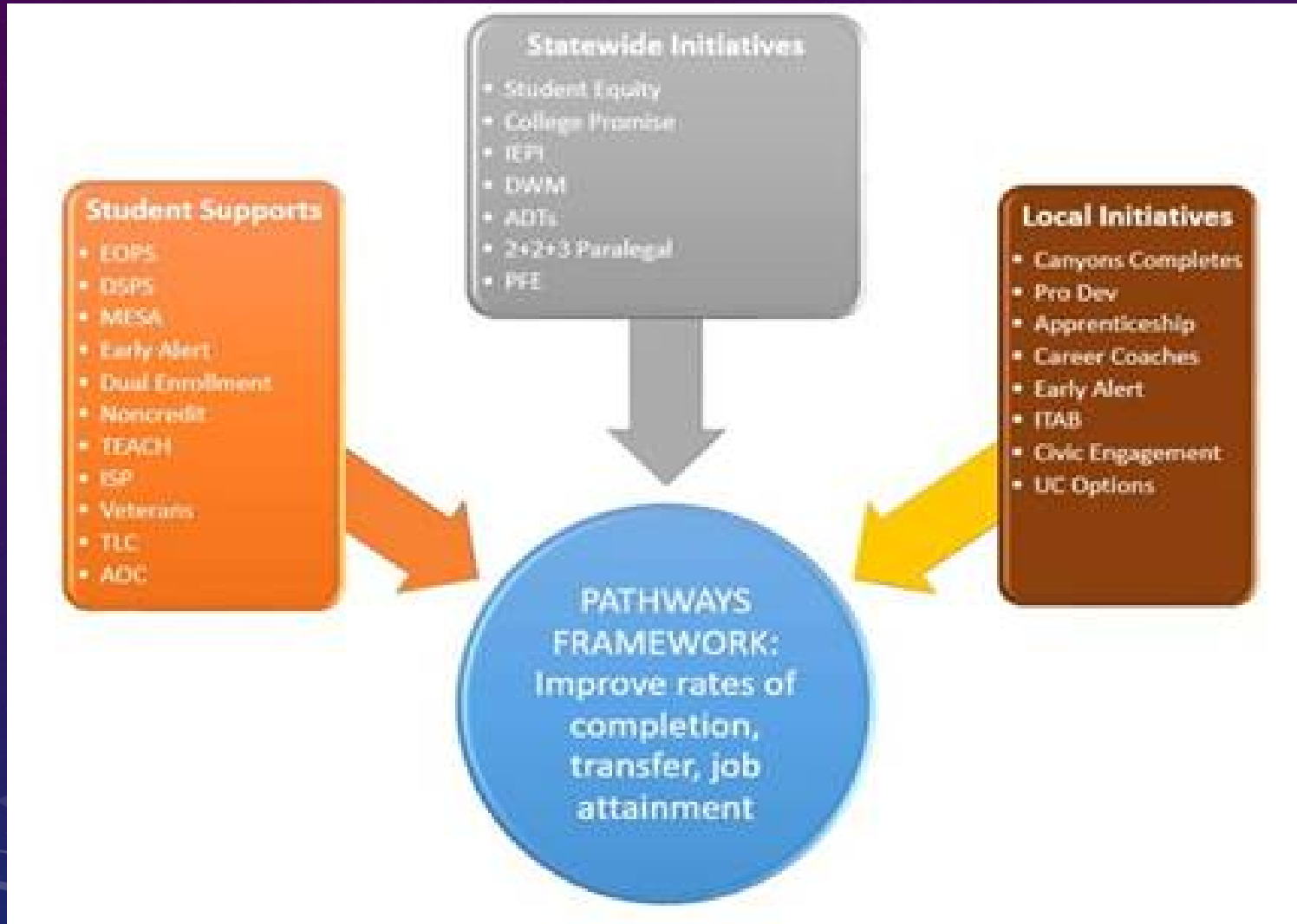
What is Pathways?



HOW DO THE COMPONENTS WORK TOGETHER?

*Via the Pathway framework
& Collaboration.*

WHAT ROLE DOES COLLABORATION PLAY?



Collaboration helps develop pathways!

The Cycle of Planning



Research, resources, and institutional mission values and beliefs influence all components of the planning process.

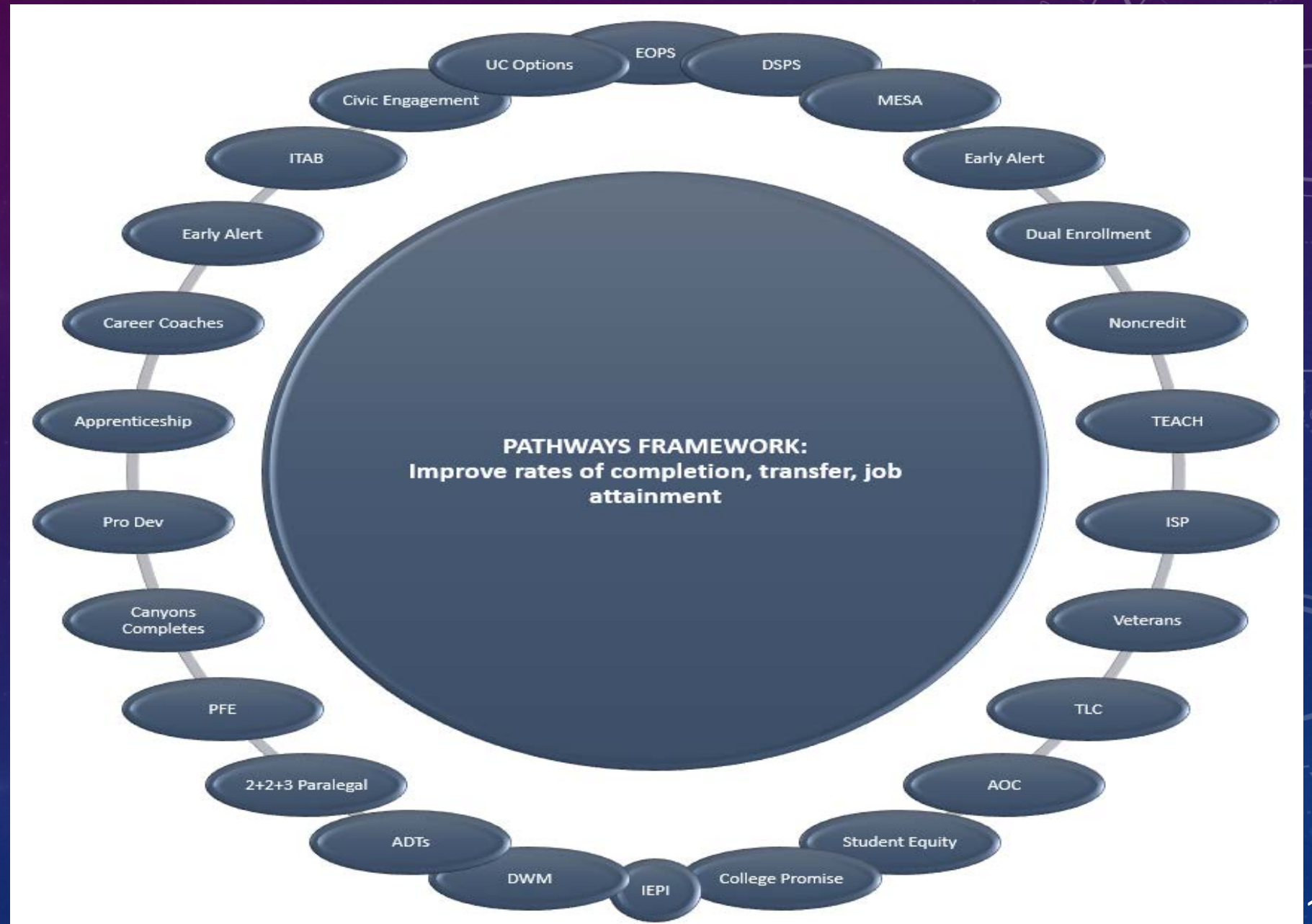


Guided Pathways Framework

College Promise Initiatives

What do you have at your college that will help:

- *Improve Complete Rates*
- *Increase Transfers*
- *Accelerate Job Placement*



Moving Forward - What is your role as a leader?

F-I-A PROCESS

ACTION

A clear, compelling way forward that can help you get there early and win.

FORESIGHT

A plausible internally consistent view of the future

INSIGHT

An "Aha" moment that provokes action

Moving Forward – How will our Leadership Focus change?

Current Literacy

- Leaders focus on the present first, then think out gradually as far as they can toward the future.
- How can I look ten years ahead when I can't even make sense of the present?
- Leaders who express certainty are viewed as strong leaders.

Future Literacy

- The best leaders will jump ten or more years ahead and then work backward from the future.
- Long-term forecasting is easier than short-term – leaders will have to look long to make sense of the VUCA (Volatile, Uncertain, Complex and Ambiguous) world.
- Certainty will be suspect, but the best leaders will have clarity.

WHAT'S YOUR ATTITUDE?

**ATTITUDE
IS
EVERYTHING**



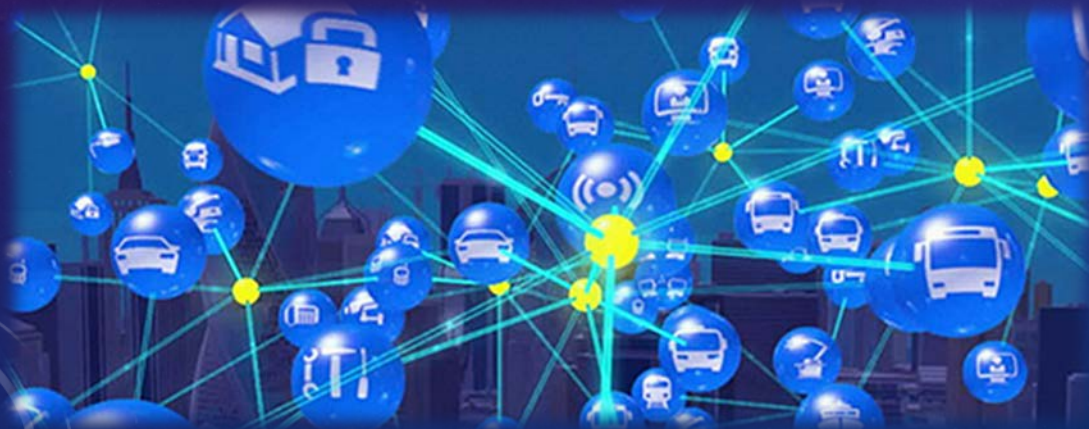
A ATTITUDE
C CHANGES
T THINGS

It's your choice!

WHAT'S YOUR ATTITUDE?

I think that
technology is
**bringing us
closer together.**

I think that
technology is
**pushing us
further apart.**



WHAT'S YOUR ATTITUDE?

I am **optimistic**
about the
direction of the
world in the next
10 years.

I am **pessimistic**
about the
direction of the
world in the next
10 years.



WHAT'S YOUR ATTITUDE?

My organization
**actively takes
risks** to position
itself for the
future.

My organization
is risk averse
when it comes to
making changes
for the future.



Future in
Facts



VS.

Future in
Episodes

What is your Personal Future?

Trepidation instead of tranquility?

Eager and Excited?

Not Sure what you think?

**It's your choice and responsibility to
create the future you will live in!**

