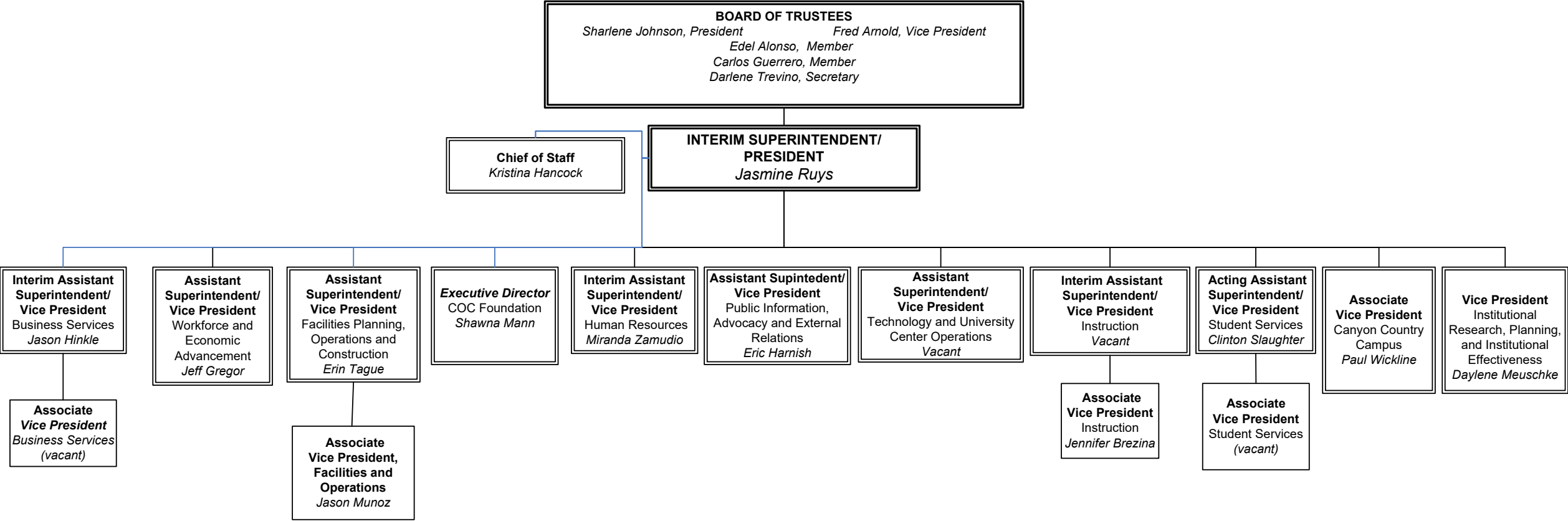


ADMINISTRATIVE ORGANIZATIONAL CHART

Santa Clarita Community College District
College of the Canyons

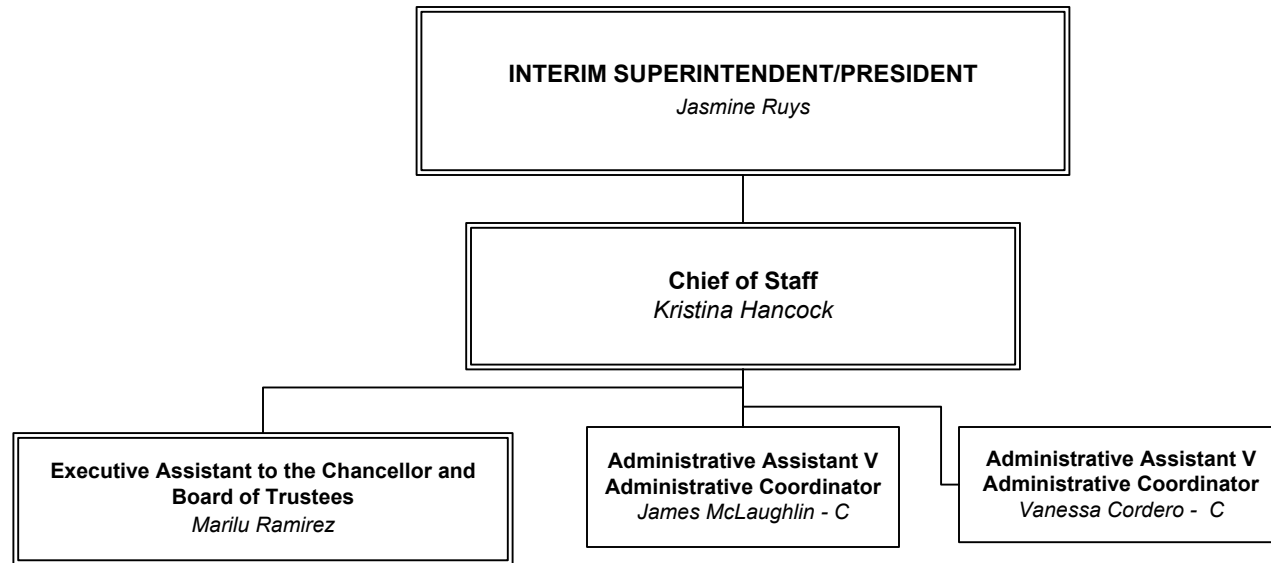


**Santa Clarita Community College District
College of the Canyons Organization Chart
Table of Contents**

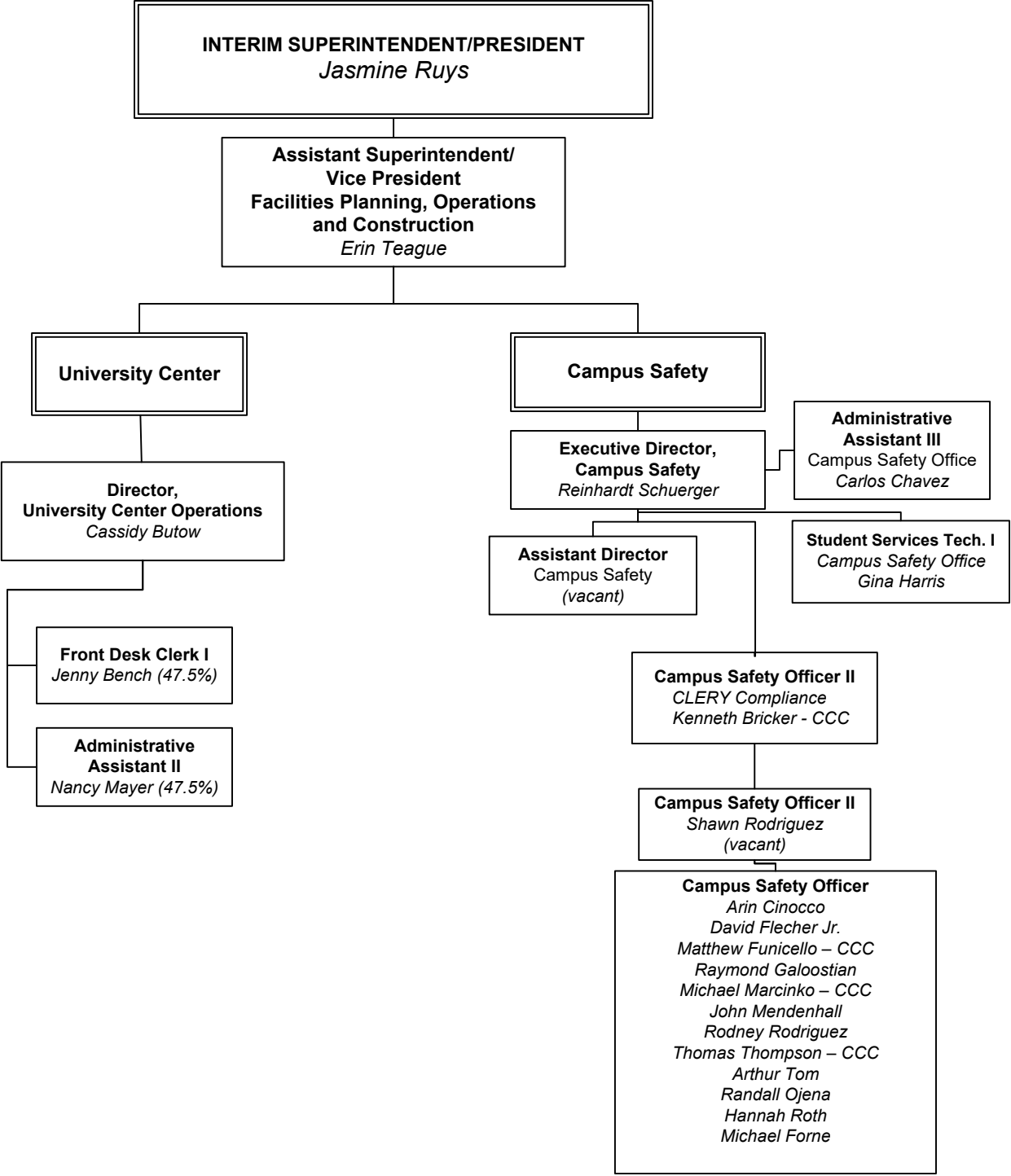
Department

- President's Office – Pg. 3
- Campus Safety & University Center – Pg. 4
- Technology and CSS – Pg. 5
- Human Resources – Pg. 6
- Business Services – Pg. 7
- Public Information, Advocacy, External Relations & District Communications – Pg. 8
- Facilities Planning, Operations, and Construction – Pg. 9
- Economic and Workforce Advancement – Pg. 10
- Canyon Country Campus, Infrastructure and Grants – Pg. 11
- Canyon Country Campus, Student Services and Instruction – Pg. 12
- Institutional Research, Planning, and Institutional Effectiveness, Intercultural Center, and CCC Initiatives – Pg. 13
- Student Services – Pg. 14-20
 - Counseling and Enrollment Services - Pg. 16
 - Admission & Records and Online Services Pg. 17
 - Academic Accommodations, Extended Opportunity & Services EOPS/CARE/CalWORKs and Rise, Student Health and Wellness Center – Pg. 18
 - Campus Life and Student Engagement, Financial Aid and Scholarships, Student Resources and Basic Needs, International Affairs and Global engagement, Student Business Office – Pg. 19
 - CWEE Volunteers – Pg. 20
- Instruction – Pg. 21-34
 - Office of Instruction – Pg. 20
 - Education Technology, Learning Resources, and Online Education – Pg. 21
 - Schools of Instruction – Pg. 23
 - School of Applied Technologies – 24
 - School of Business – Pg. 25
 - School of Humanities – Pg. 26
 - School of Social and Behavioral Sciences – Pg. 27
 - School of Kinesiology, Health & Wellness, Fitness & Athletics – Pg. 28
 - School of Health Professions – Pg. 29
 - School of Public Safety – 30
 - School of Mathematics, Sciences, & Engineering – Pg. 31
 - School of Visual and Performing Arts – Pg. 32
 - Center for Early Childhood Education – Pg. 33
- College of the Canyons Foundation Organization – Pg. 35

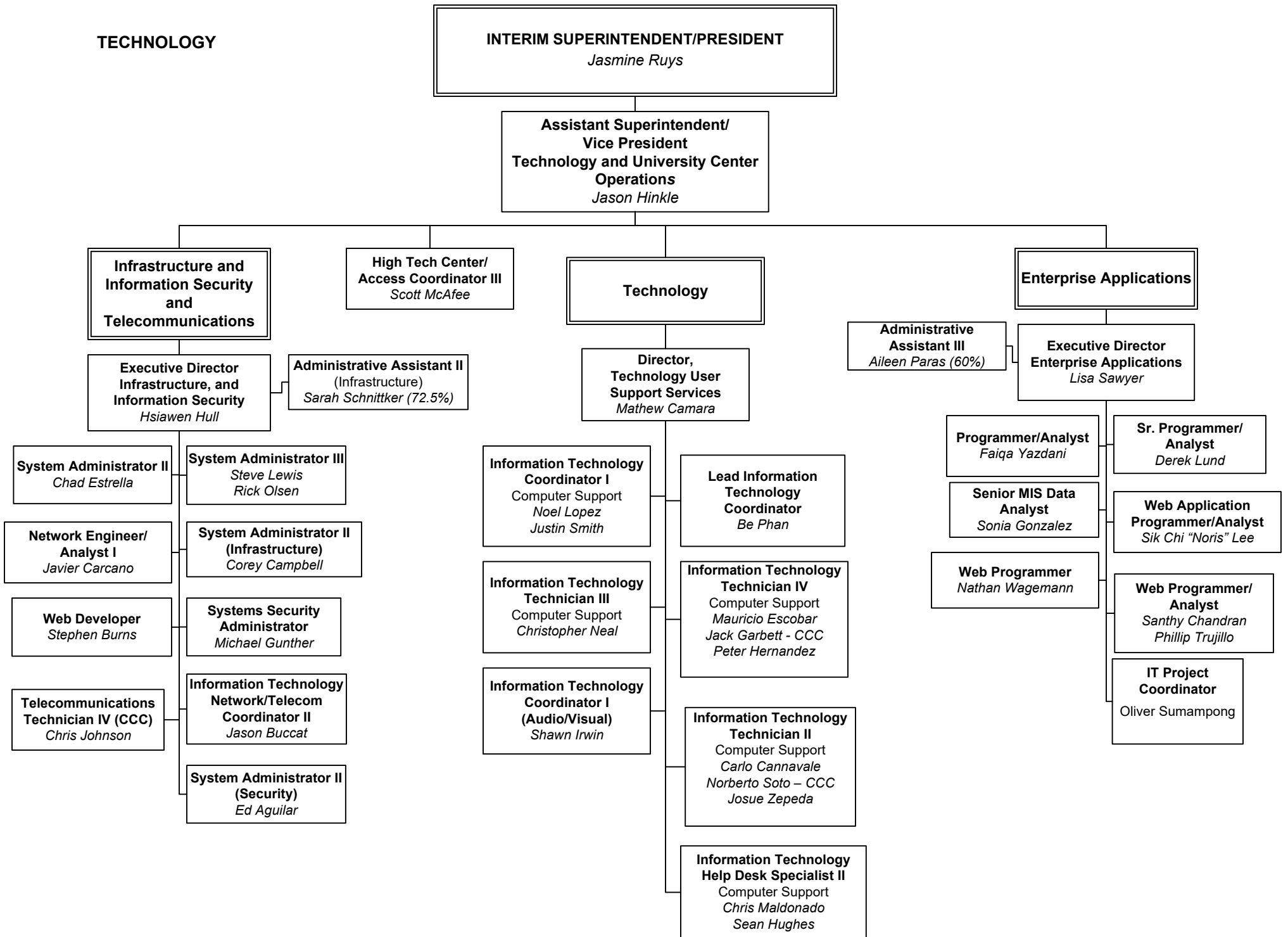
PRESIDENT'S OFFICE



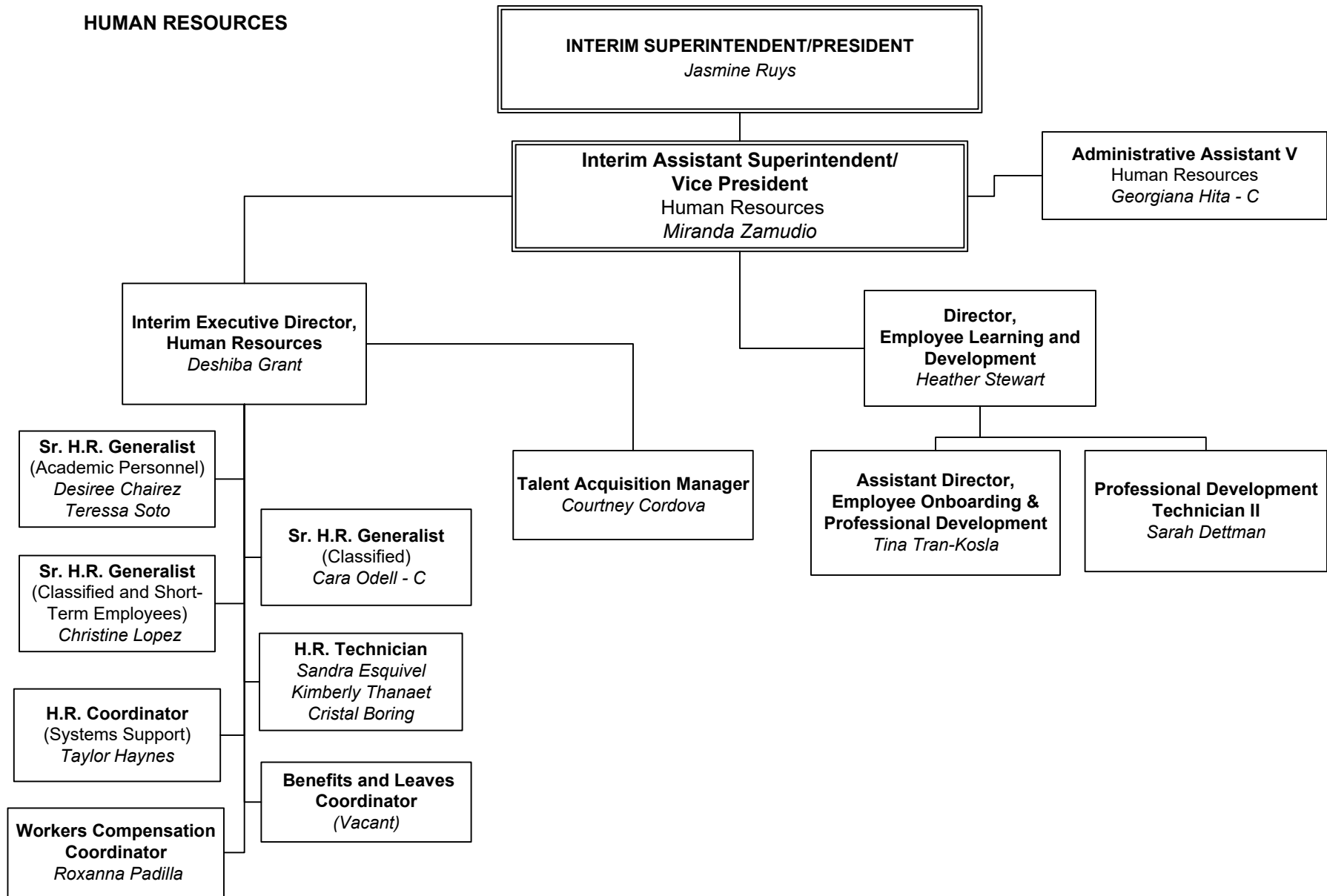
CAMPUS SAFETY
& UNIVERSITY CENTER



TECHNOLOGY



HUMAN RESOURCES



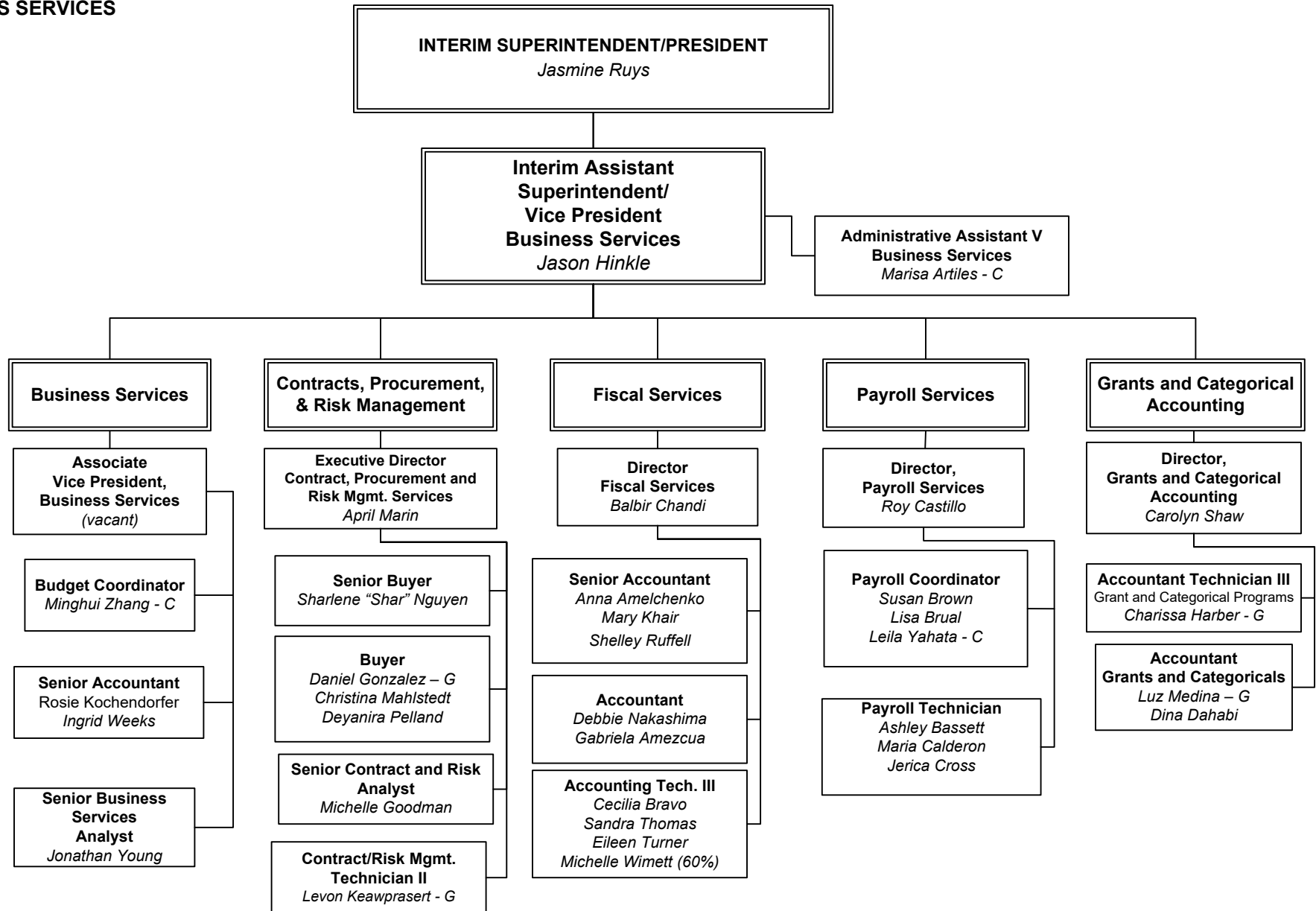
C = Confidential Employee

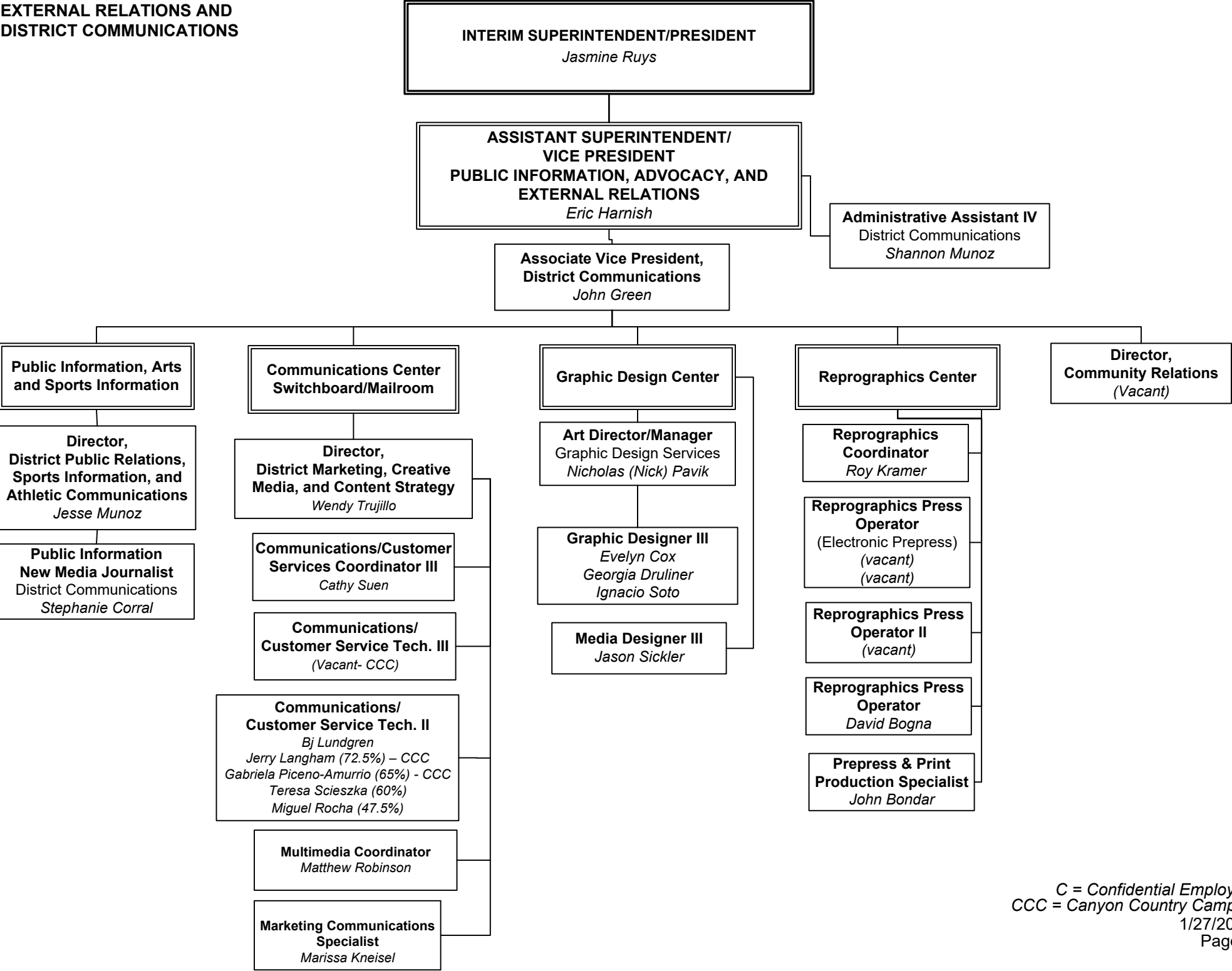
G = Grant Funded

1/27/2026

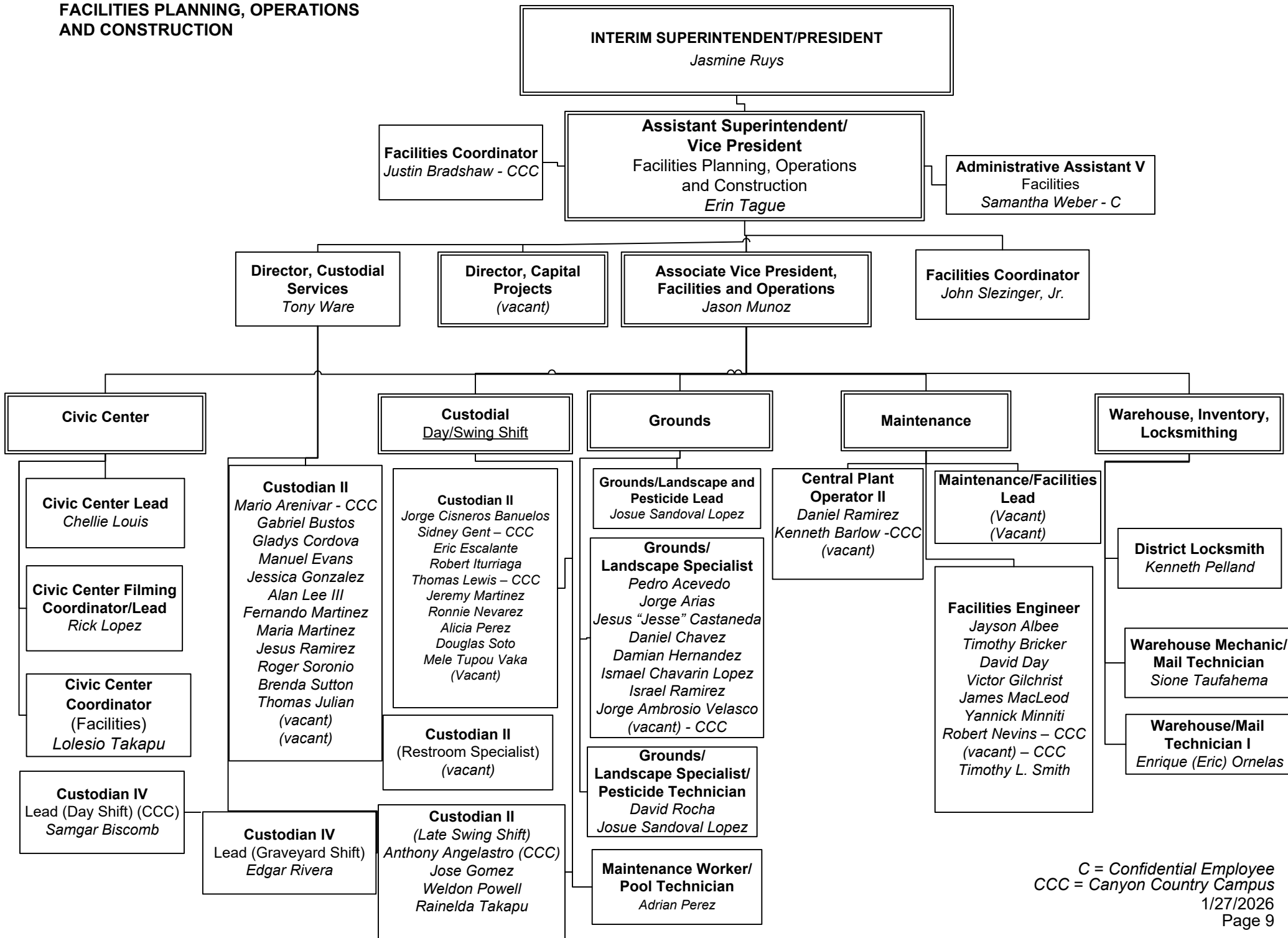
Page 6

BUSINESS SERVICES

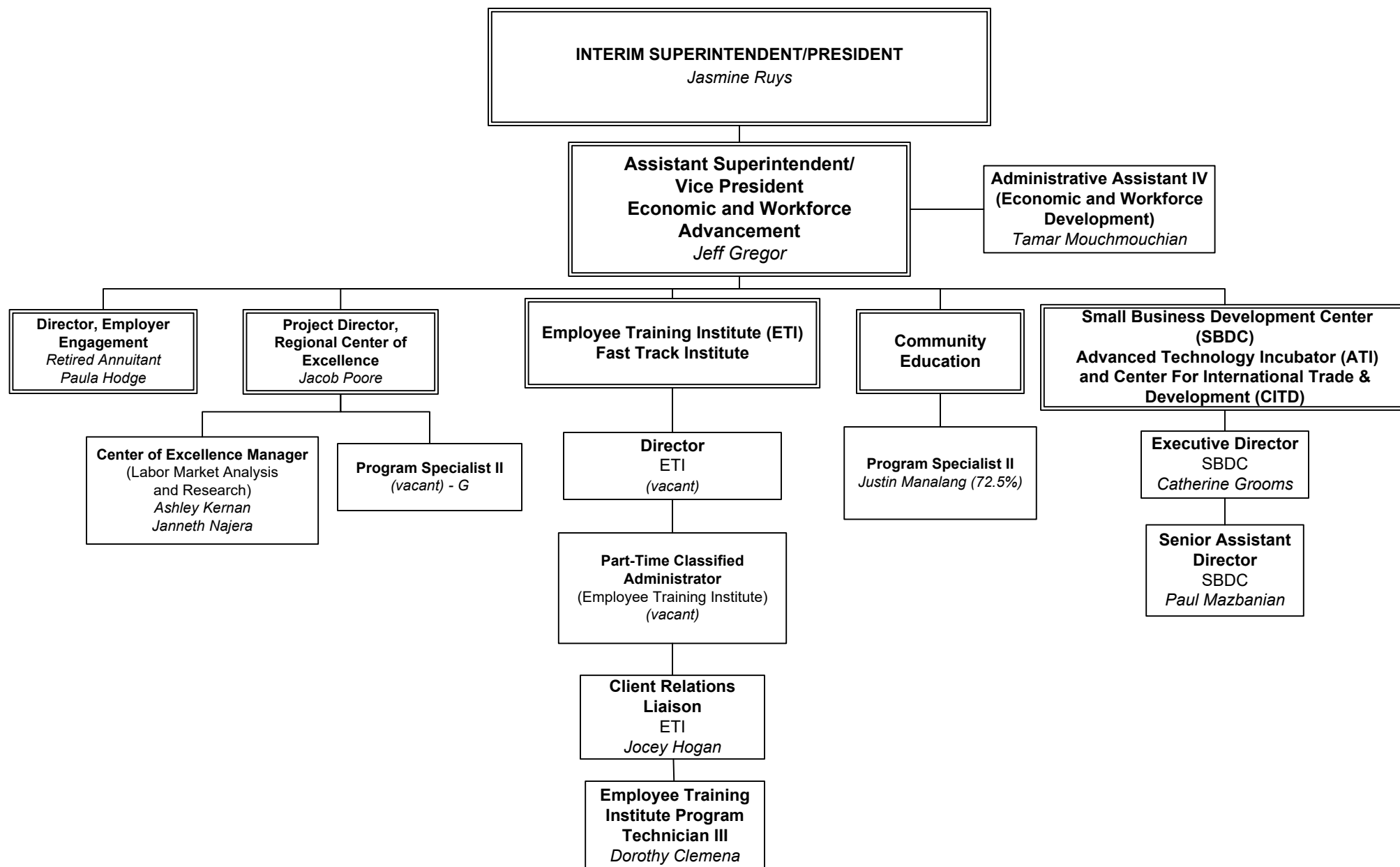




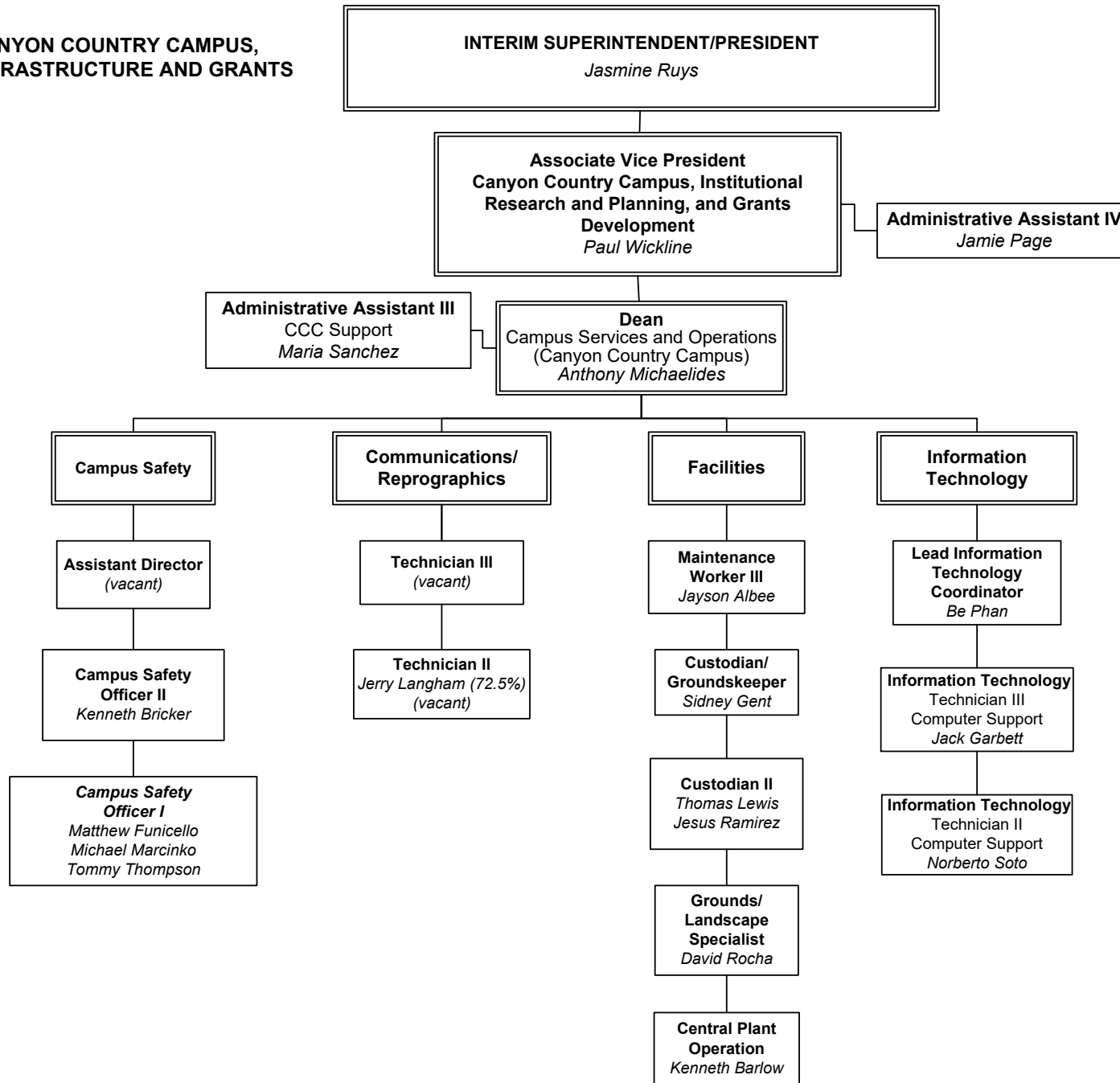
**FACILITIES PLANNING, OPERATIONS
AND CONSTRUCTION**



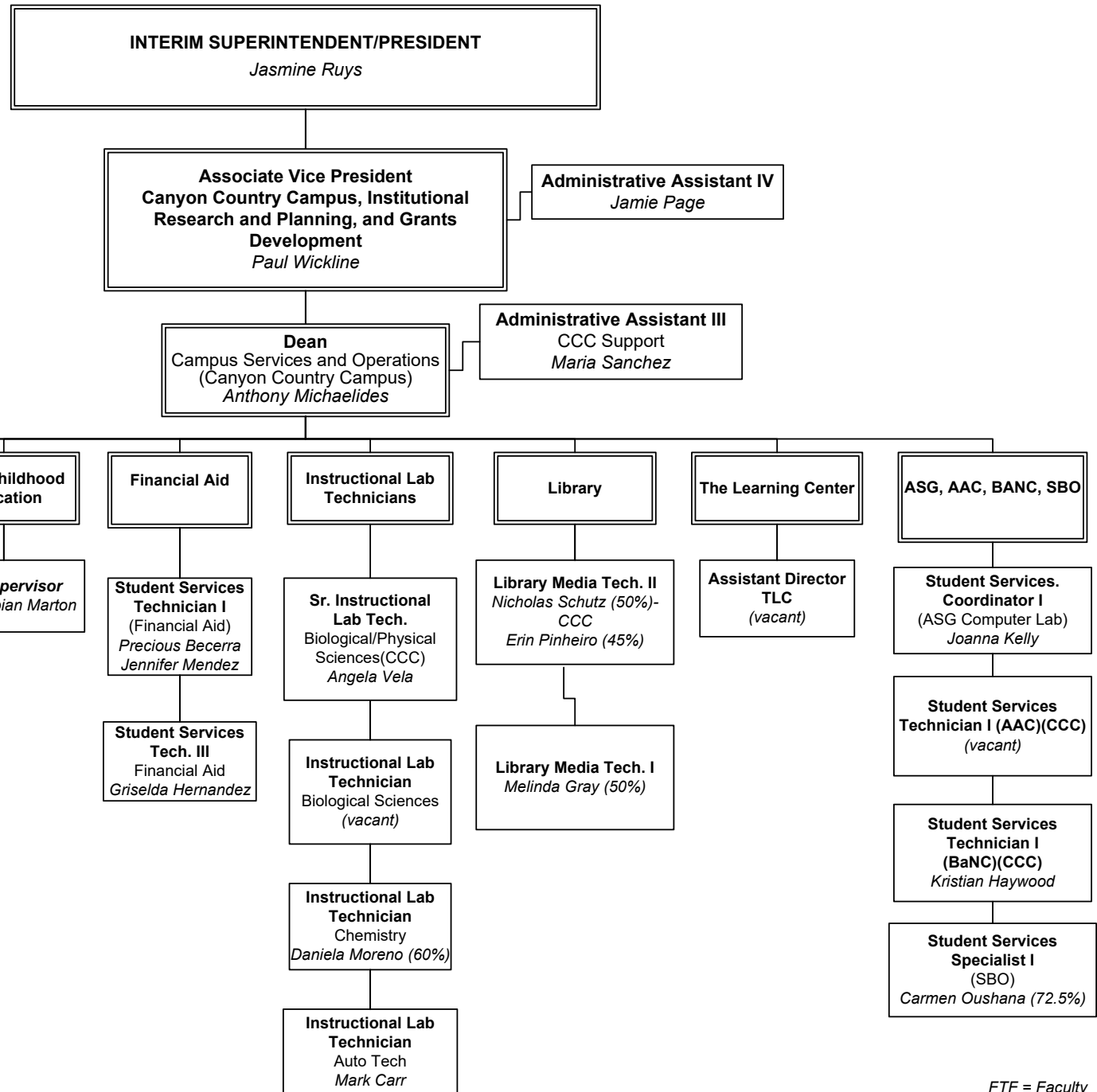
ECONOMIC & WORKFORCE ADVANCEMENT



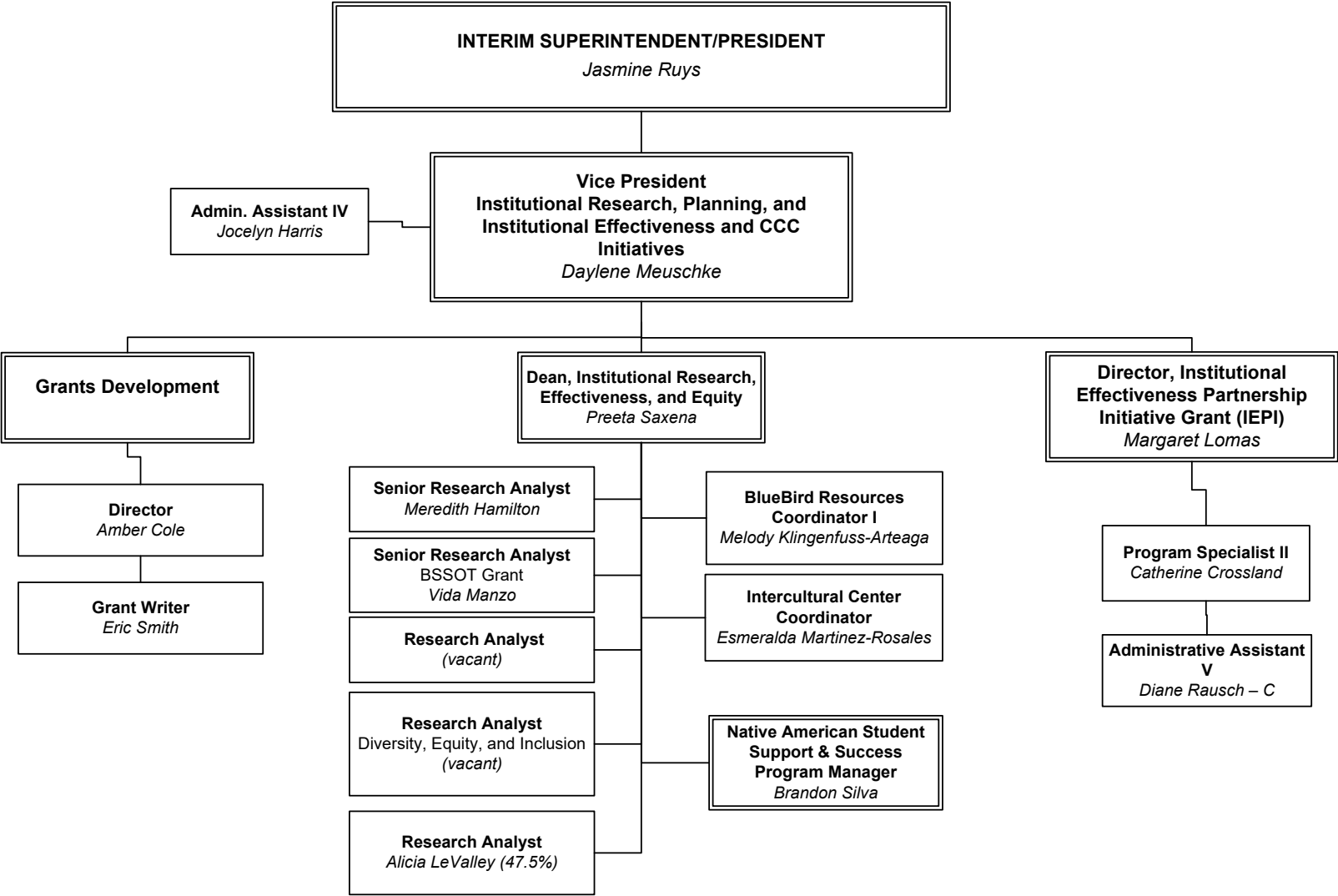
**CANYON COUNTRY CAMPUS,
INFRASTRUCTURE AND GRANTS**



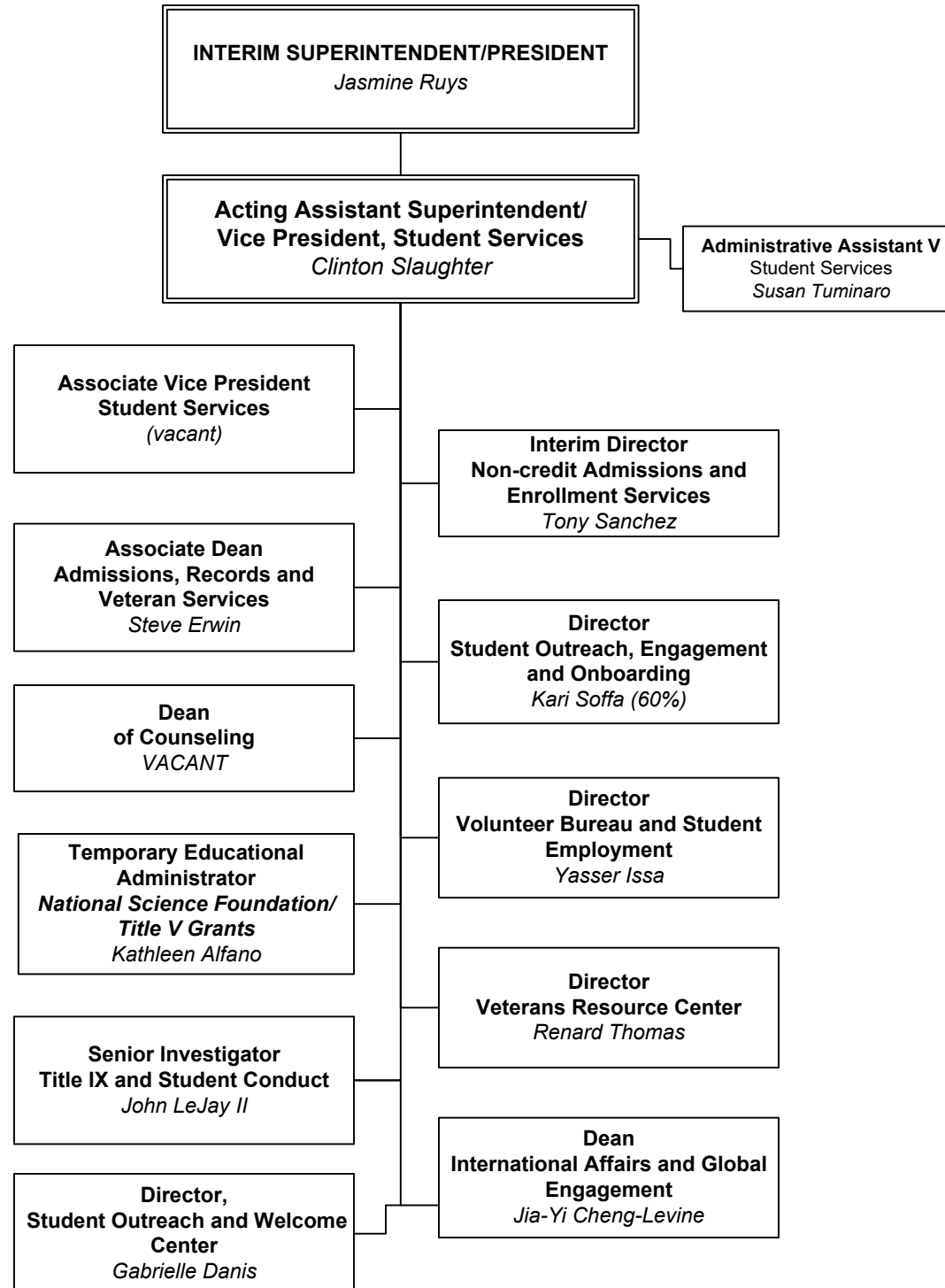
**CANYON COUNTRY CAMPUS,
INSTRUCTION AND STUDENT SERVICES**



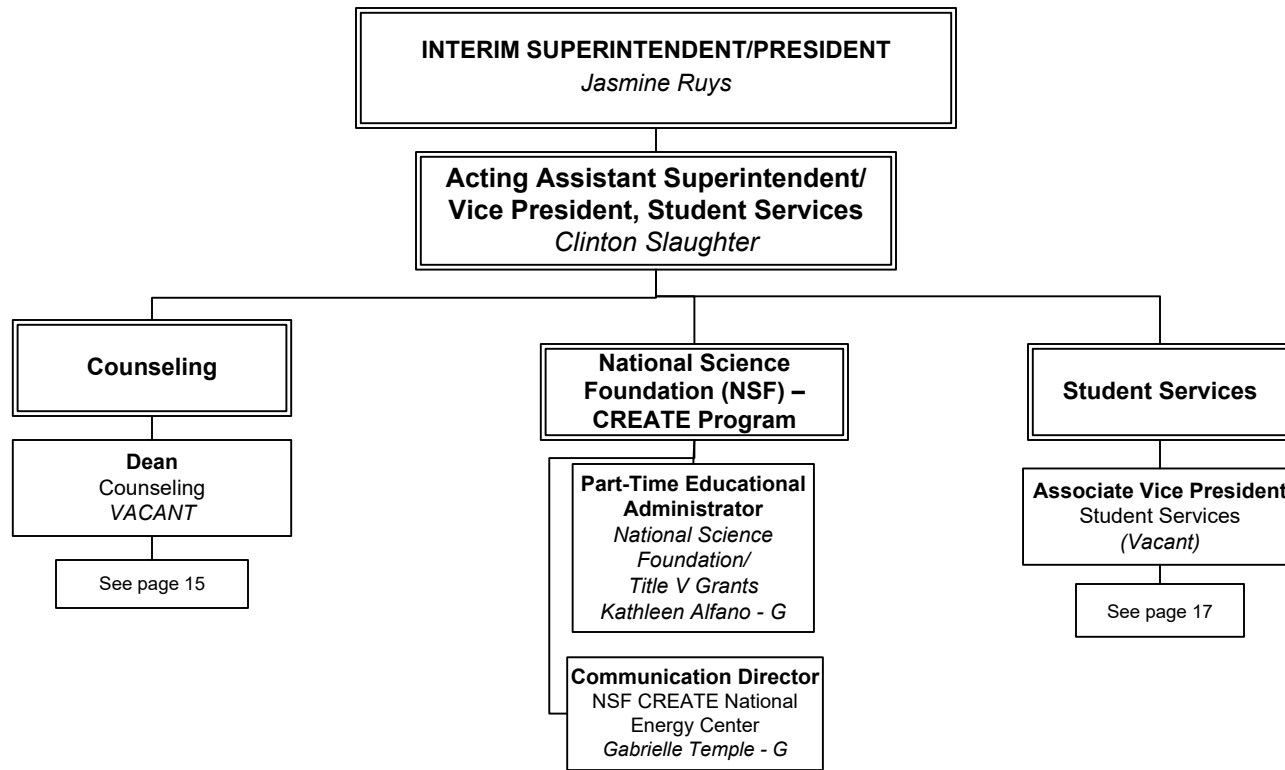
INSTITUTIONAL RESEARCH
PLANNING, AND INSTITUTIONAL EFFECTIVENESS,
INTERCULTURAL CENTER
AND CCC INITIATIVES



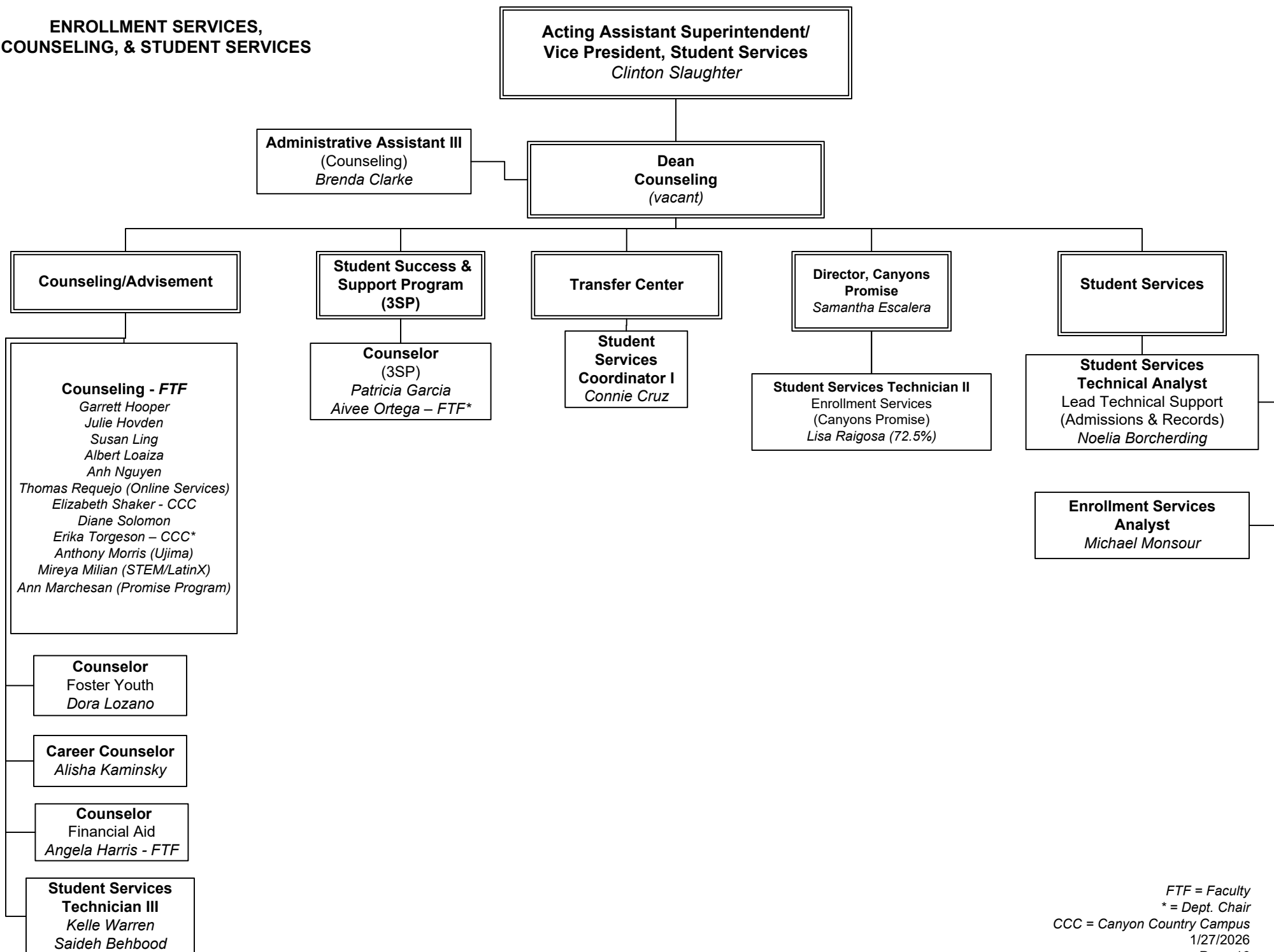
STUDENT SERVICES



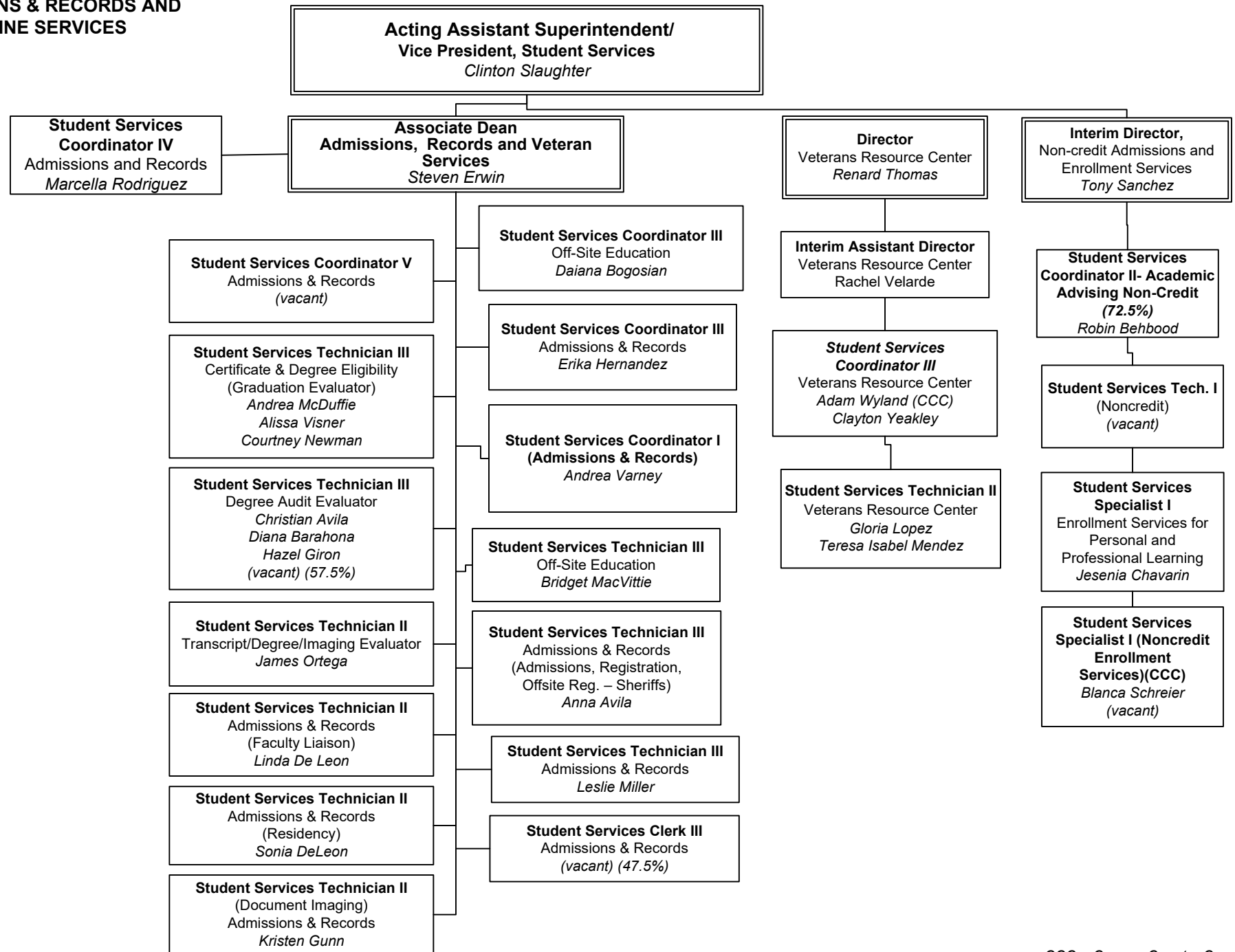
STUDENT SERVICES



**ENROLLMENT SERVICES,
COUNSELING, & STUDENT SERVICES**



**ADMISSIONS & RECORDS AND
ONLINE SERVICES**

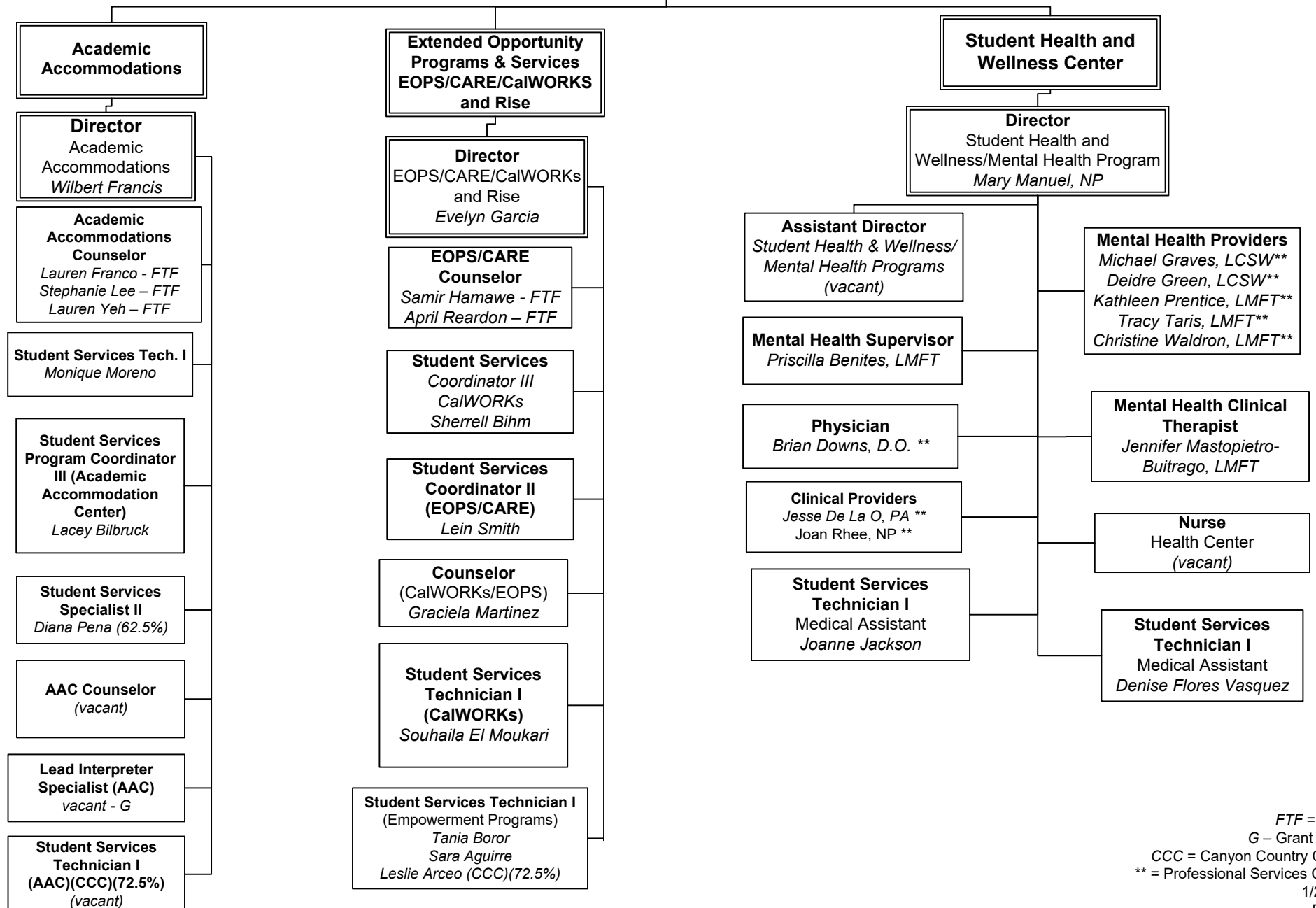


STUDENT SERVICES

**Acting Assistant Superintendent/
Vice President, Student Services**
Clinton Slaughter

**Associate Vice President
Student Services**
(Vacant)

Administrative Assistant IV
(vacant)

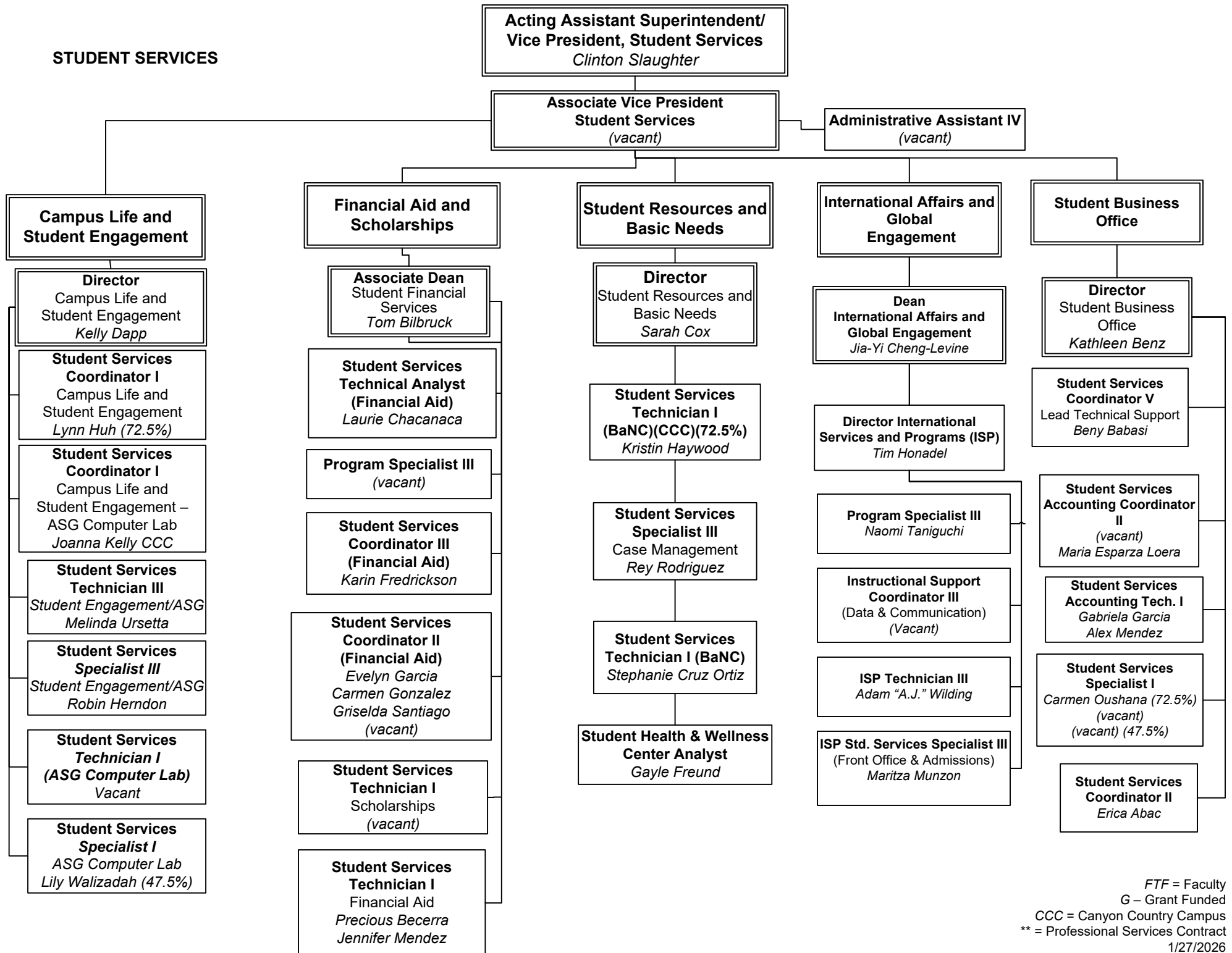


FTF = Faculty
G – Grant Funded
CCC = Canyon Country Campus
** = Professional Services Contract

1/27/2026

Page 18

STUDENT SERVICES



STUDENT SERVICES

INTERIM SUPERINTENDENT/PRESIDENT

Jasmine Ruys

**Acting Assistant
Superintendent/VP
Student Services**

Clinton Slaughter

**Director Student Outreach and
Welcome Center**

Gabrielle Danis

**Student Services
Coordinator II
(Outreach)**

Loida Sanchez - G

**Student Services
Coordinator II
Academic Advisor
(Enrollment Services)**

Anthony Morris - G

Sarah Ramos

Gina Thompson

Brandon Thompson – G

(vacant)

**Student Services
Coordinator II
(Financial Aid)**

(vacant)

Director

**Student Outreach, Engagement,
and Onboarding Services (60%)**

Kari Soffa

**Student Services Coordinator II
Outreach &
School Relations**

Regina Thompson

Director

**Volunteer Bureau and Student
Employment**

Yasser Issa

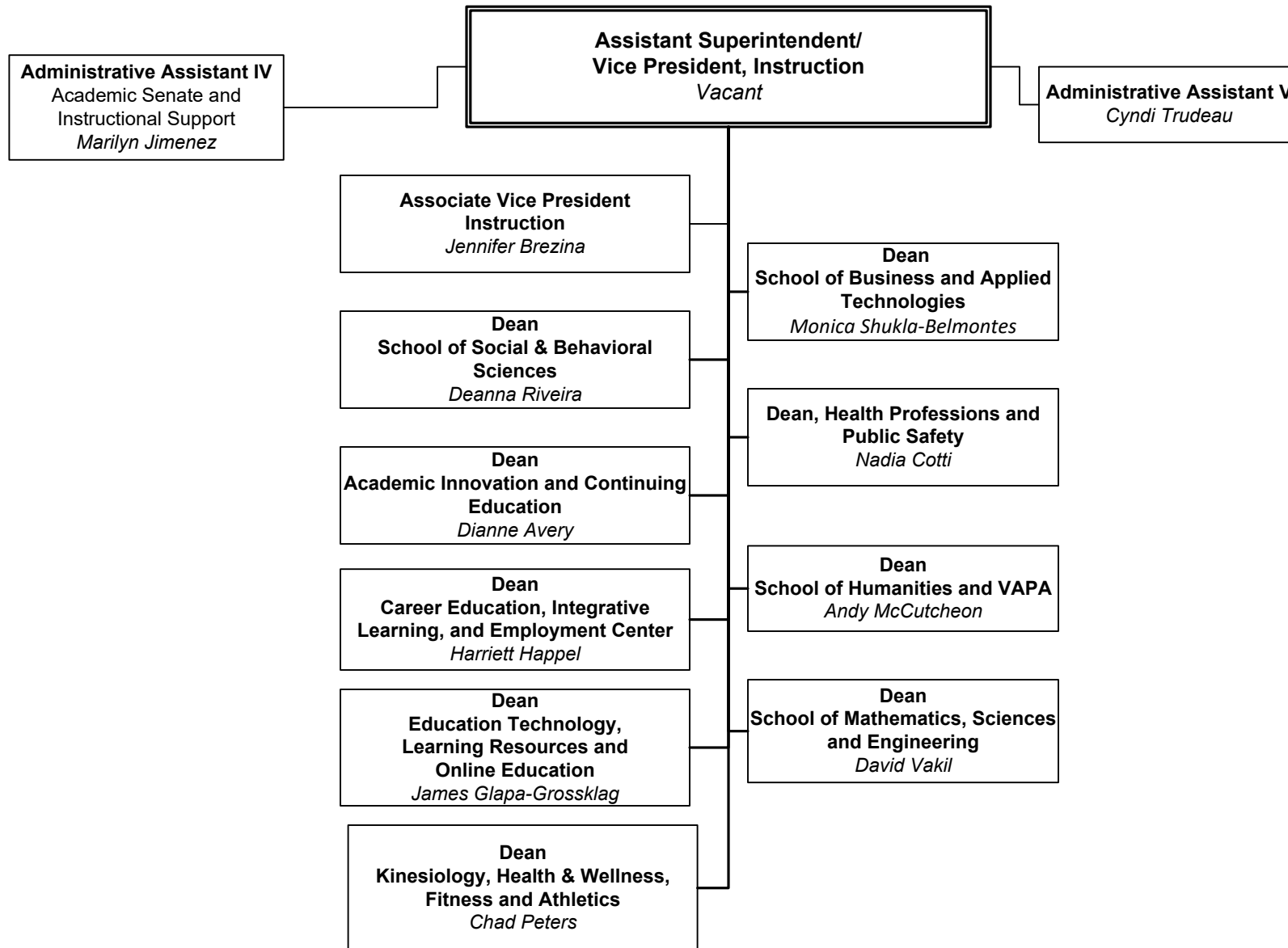
CCC = Canyon Country Campus

G = Grant funded

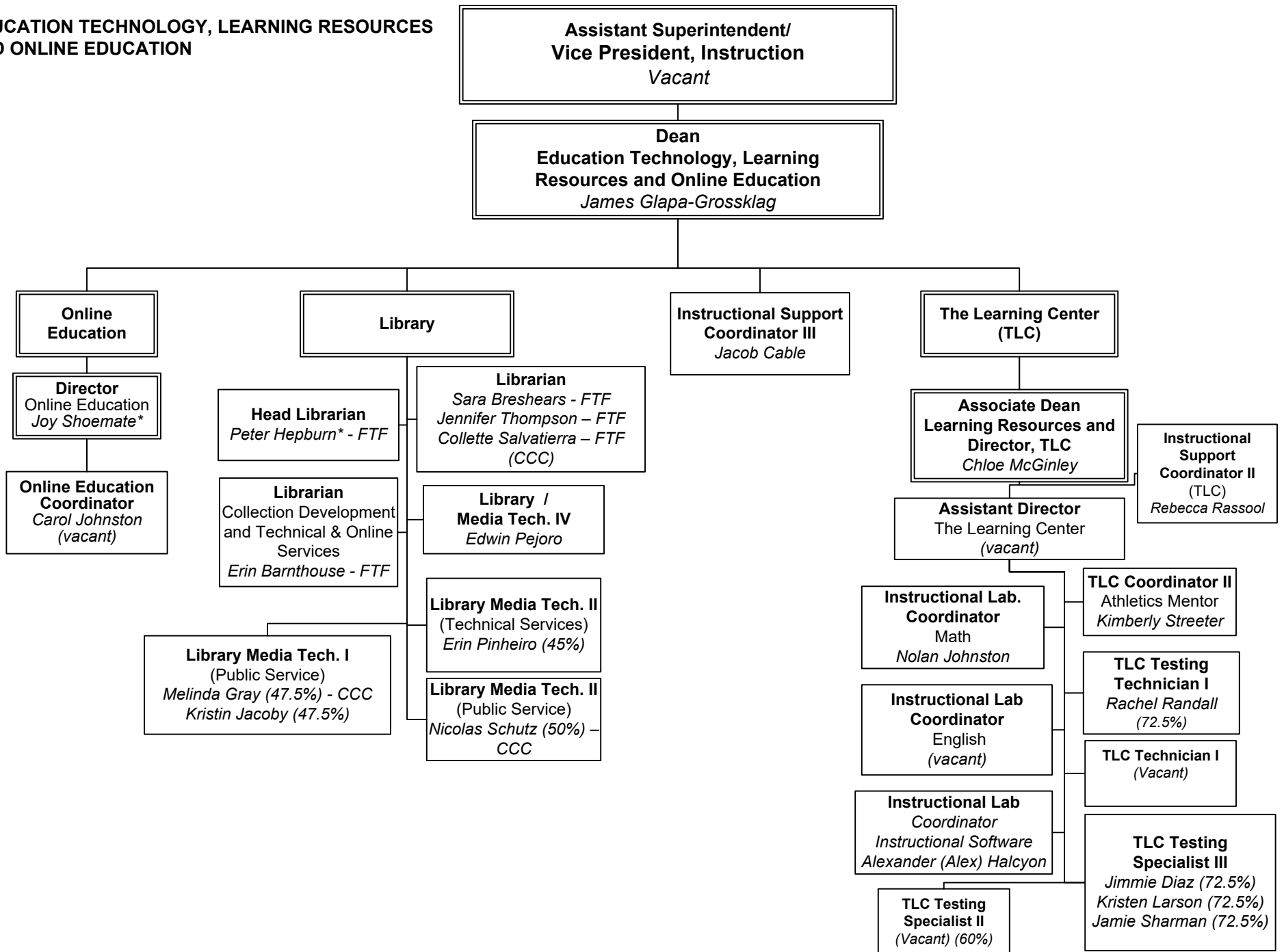
1/27/2026

Page 20

OFFICE OF INSTRUCTION

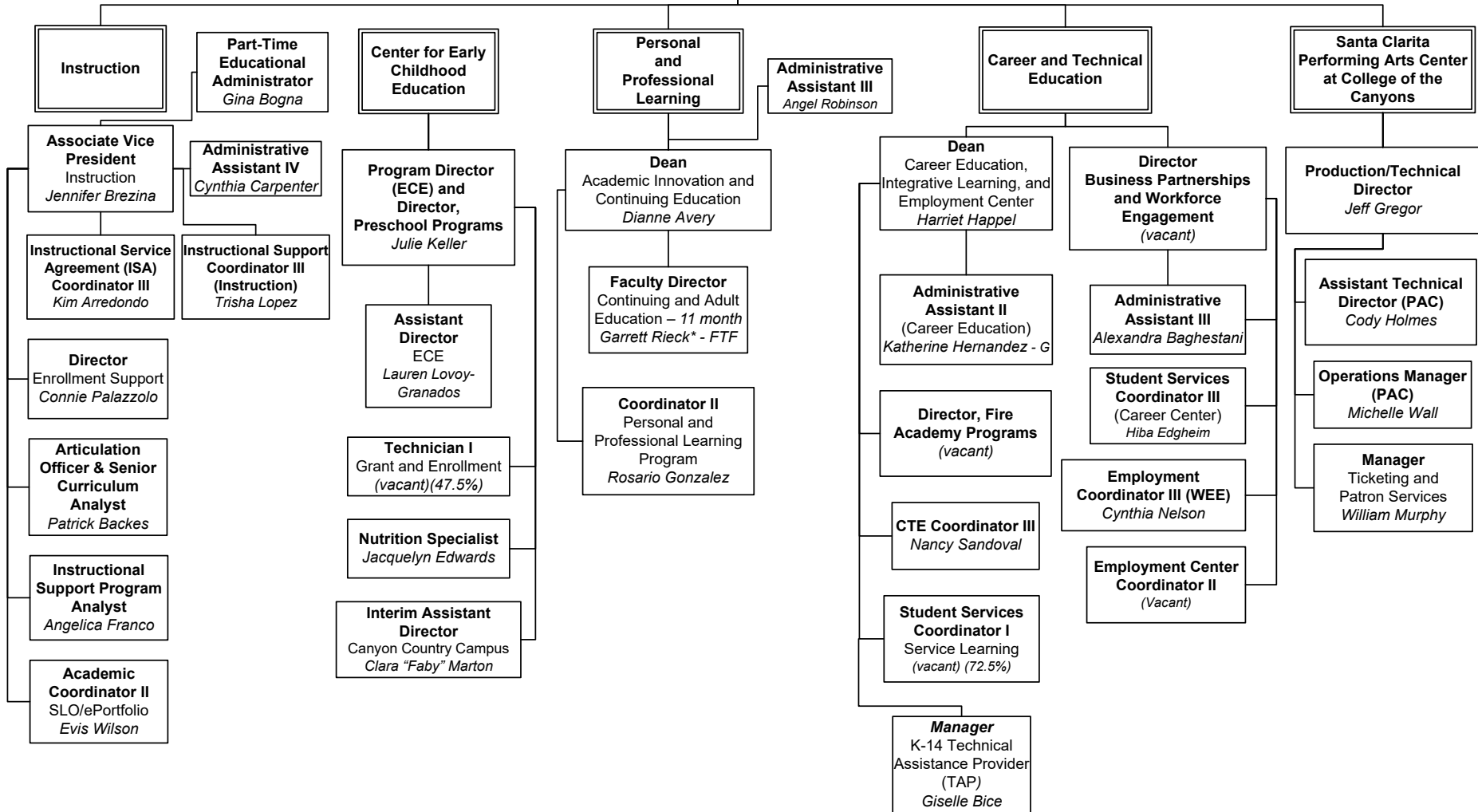


**EDUCATION TECHNOLOGY, LEARNING RESOURCES
AND ONLINE EDUCATION**



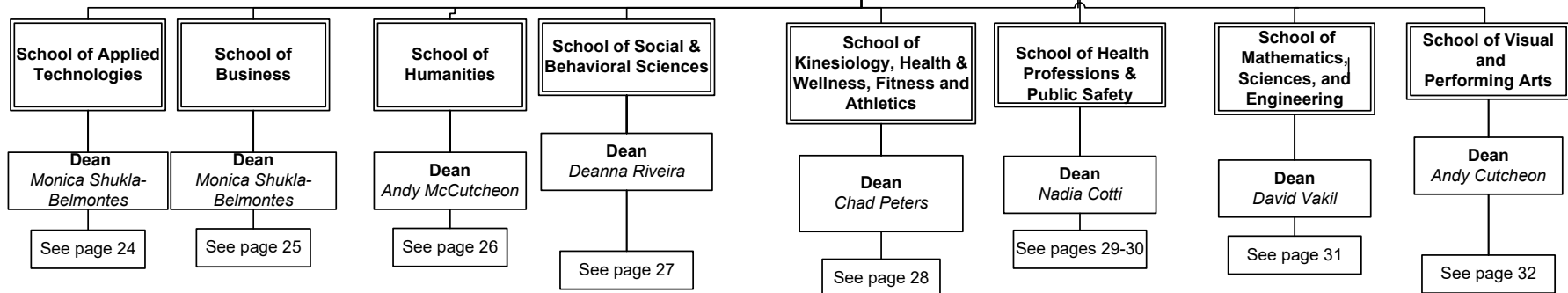
INSTRUCTION

Assistant Superintendent/ Vice President, Instruction Vacant

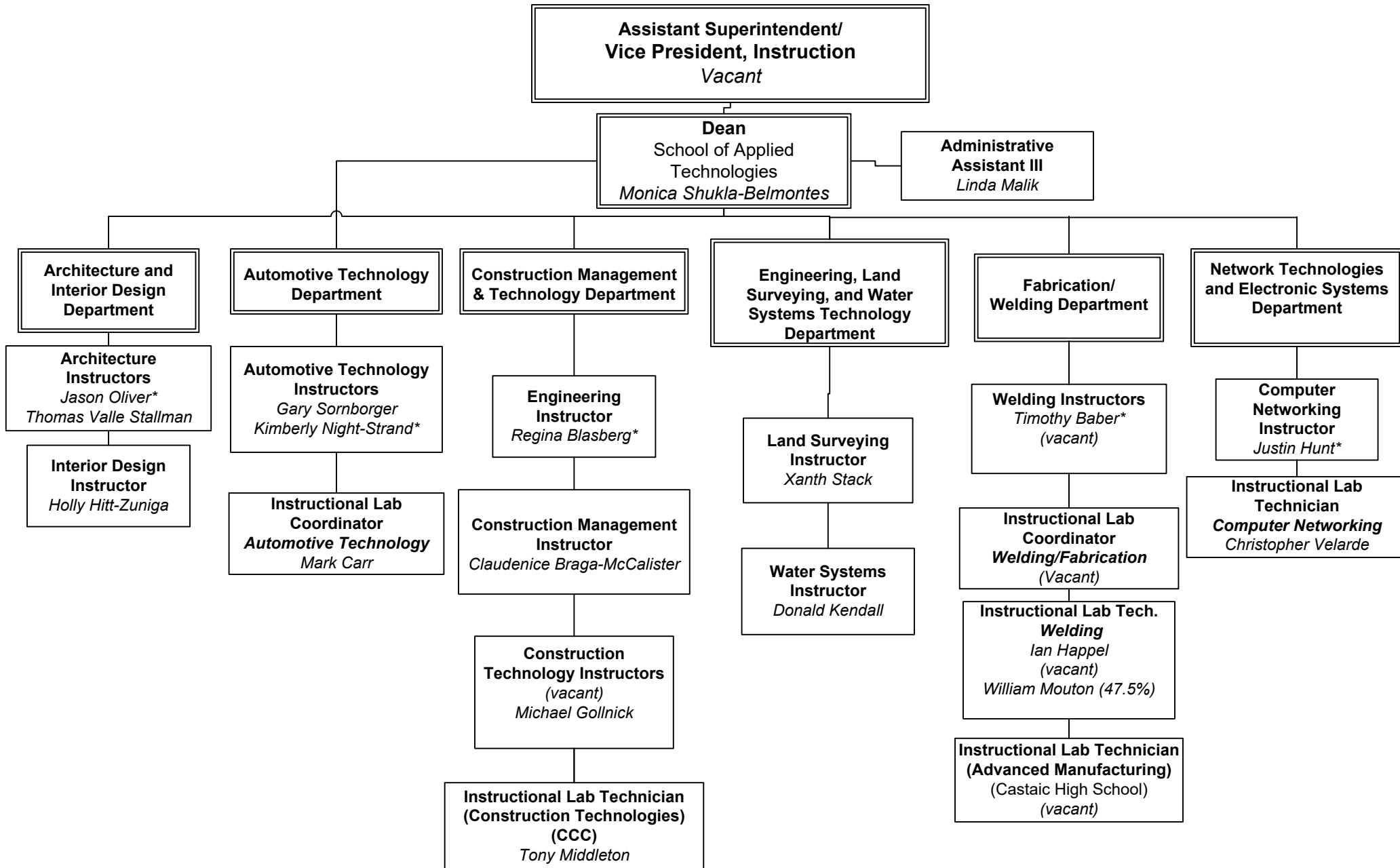


SCHOOLS OF INSTRUCTION

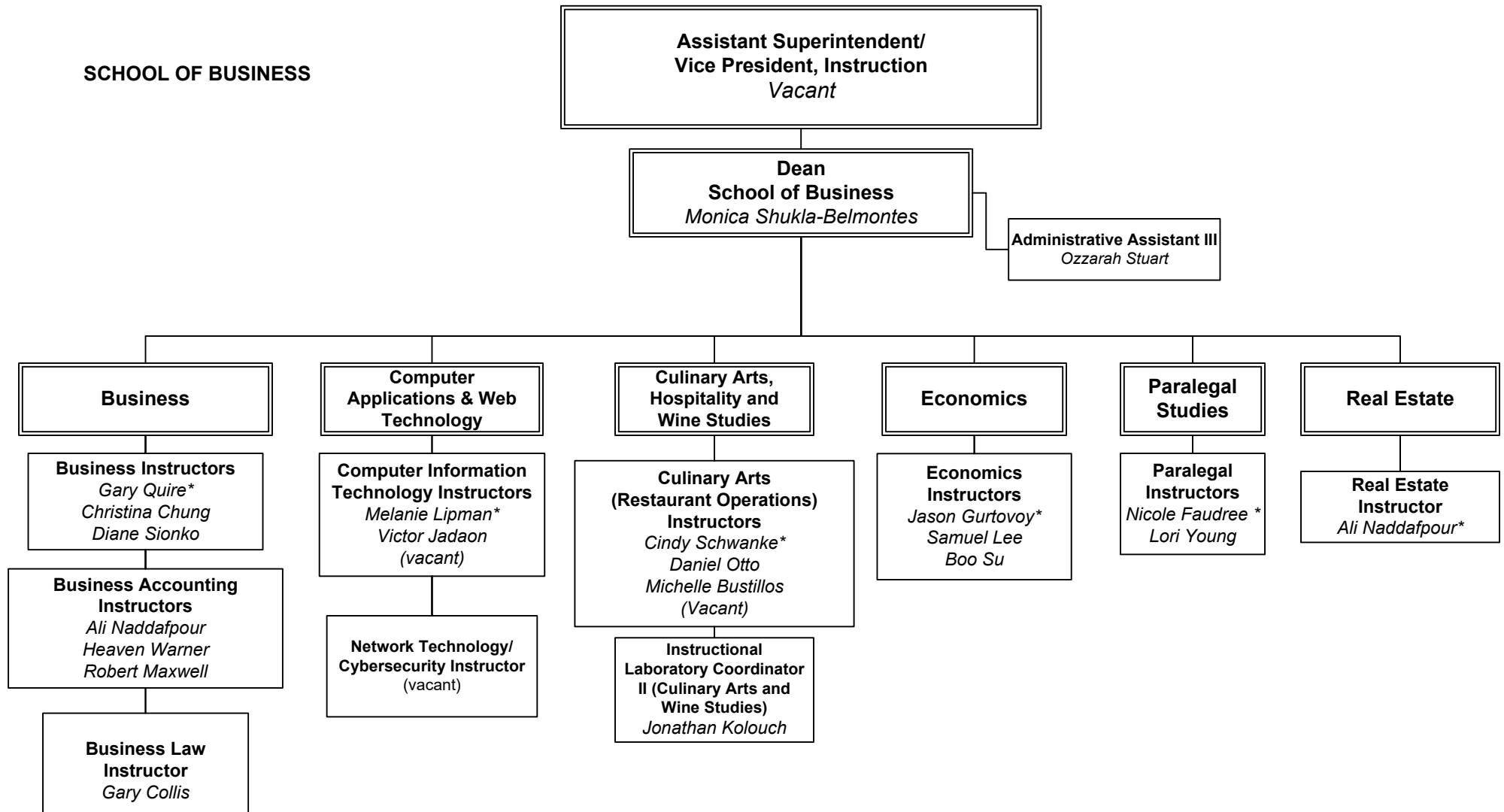
**Assistant Superintendent/
Vice President, Instruction**
Vacant



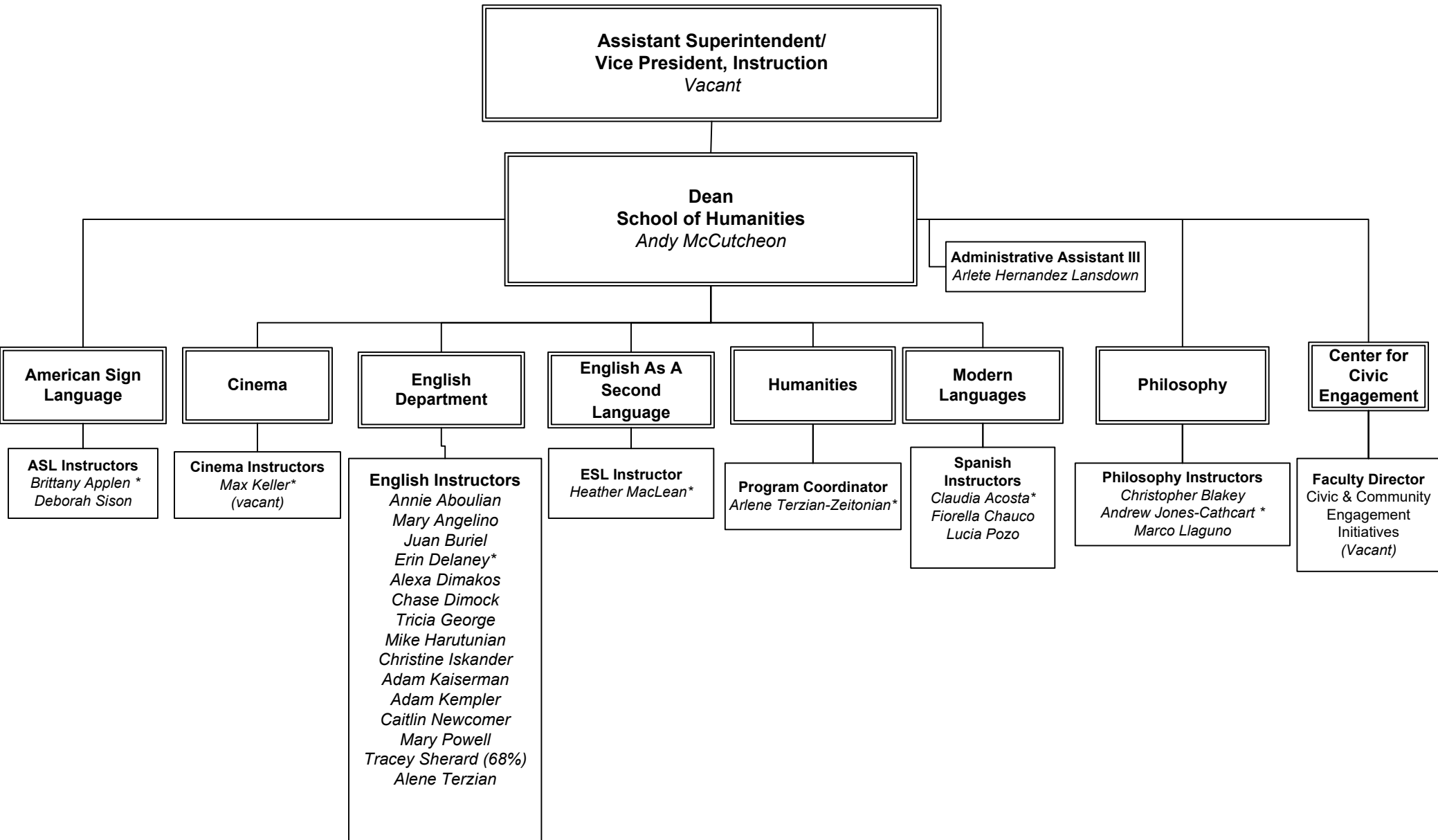
SCHOOL OF APPLIED TECHNOLOGIES



SCHOOL OF BUSINESS



**SCHOOL OF HUMANITIES &
SCHOOL OF SOCIAL AND BEHAVIORAL SCIENCES**



**SCHOOL OF SOCIAL AND
BEHAVIORAL SCIENCES**

**Assistant Superintendent/
Vice President, Instruction**
Vacant

Dean
**School of Social and Behavioral
Sciences**
Deanna Riveira

Administrative Assistant III
Lisette Godinez

**Anthropology
Department**

**Anthropology
Instructors**
*Sarah Etheridge
Lisa Malley *
Stephanie Meredith*

**Communication
Studies
Department**

**Communication
Studies Instructors**
Adam Kaminsky
Karyl Kicenski
Michael Leach
David Stevenson
Tammera Stokes-Rice
(vacant)*

**Early Childhood
Education
Department**

ECE Instructors
Jennifer Paris
Wendy Ruiz
(vacant)*

**Ethnic Studies
Department**

**Chicana/o Studies
Instructor**
Bryant Partida

**African American
Studies Instructor**
Eddie Becton

**Foster and
Kinship Care
Program**

Instructor
(vacant)

**History
Department**

History Instructors
*Erik Altenbernd
Michael Felix
Julianne Johnson
Sherrill Pennington *
Brent Riffel
John Varga*

**Political
Science
Department**

**Political Science
Instructors**
*Phil Gussin
Majid Mosleh*
Karl Striepe*

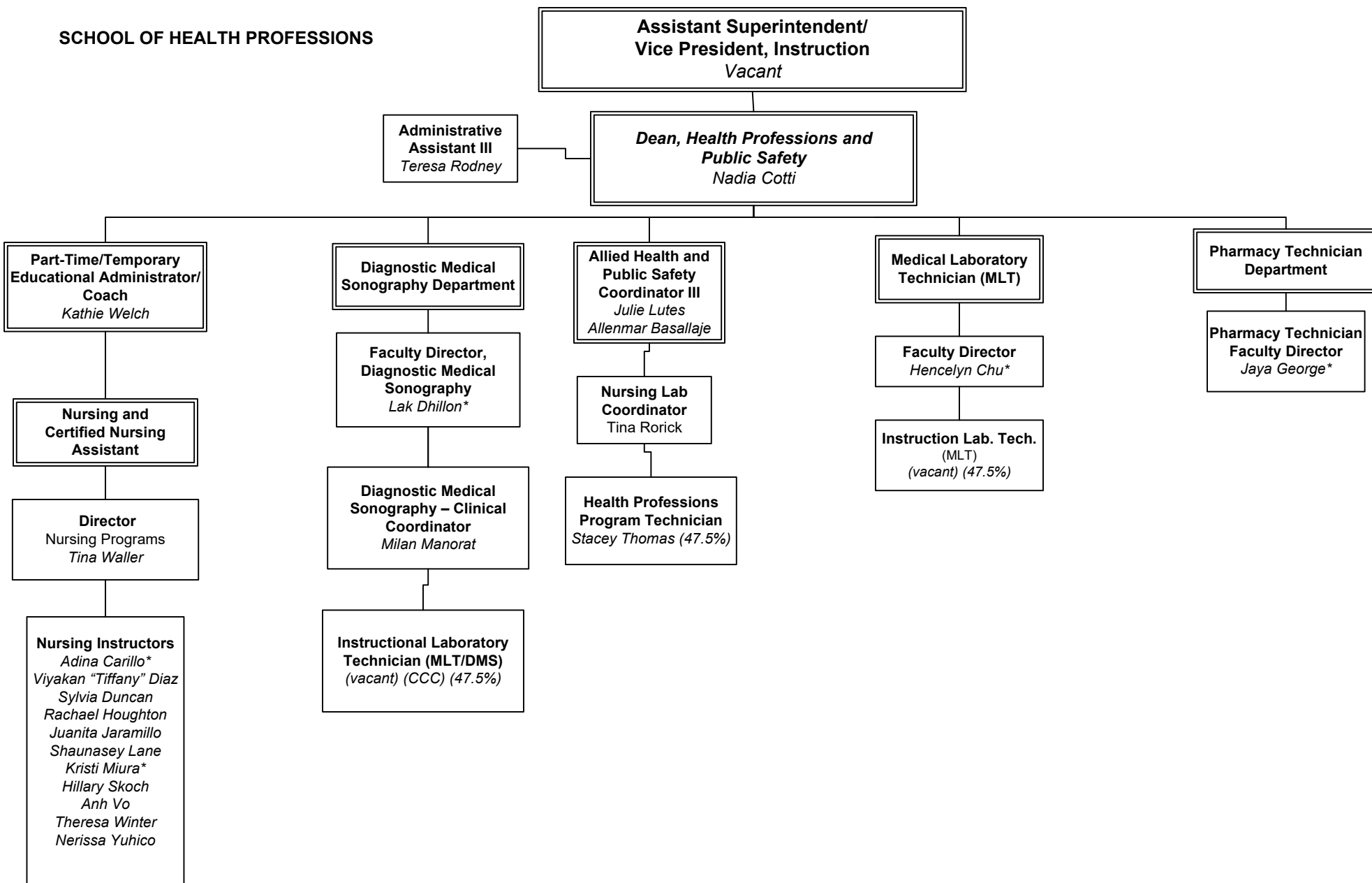
**Psychology
Department**

**Psychology
Instructors**
*Mehgen Andrade
Michelle LaBrie
Tammy Mahan
Nadia Monosov
Deanna Riveira *
Rebecca Shepherd*

**Sociology
Department**

Sociology Instructors
*Kathryn Coleman *
Anne Marengo
Hernan Ramirez
Pamela Williams-Paez
Robert Wonser*

SCHOOL OF HEALTH PROFESSIONS



FTF = Faculty

* = Dept. Chair

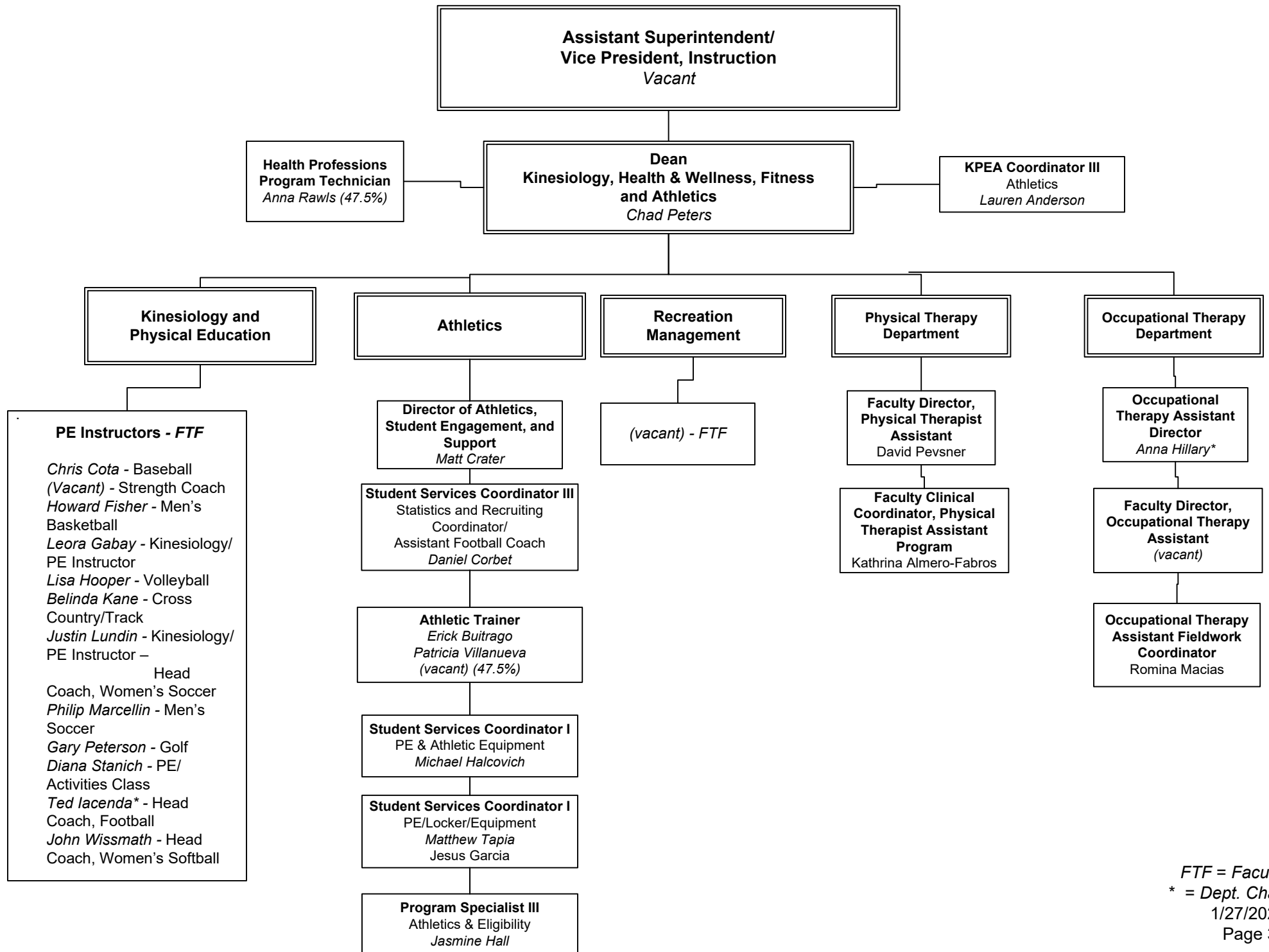
G – Grant Funded

CCC = Canyon Country Campus

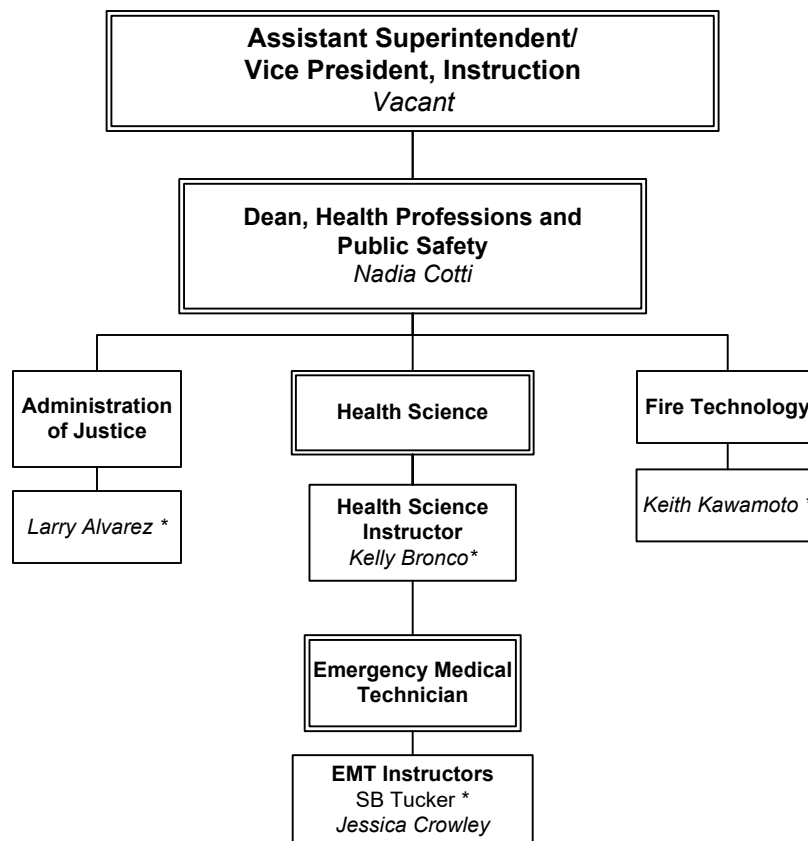
1/27/2026

Page 29

**KINESIOLOGY, HEALTH & WELLNESS,
FITNESS & ATHLETICS**



SCHOOL OF PUBLIC SAFETY



FTF = Faculty

** = Dept. Chair*

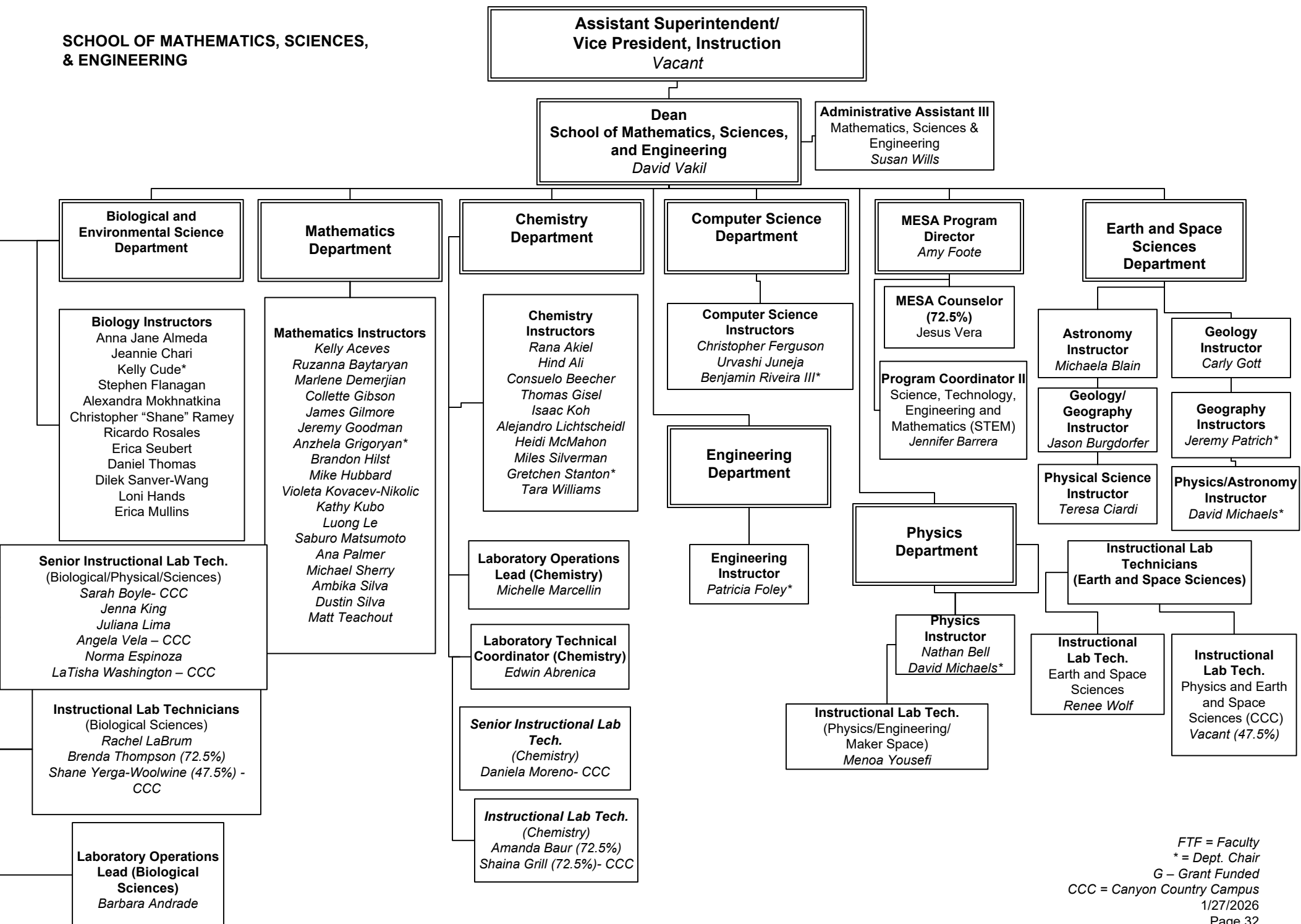
G – Grant Funded

CCC = Canyon Country Campus

1/27/2026

Page 31

**SCHOOL OF MATHEMATICS, SCIENCES,
& ENGINEERING**



FTF = Faculty

* = Dept. Chair

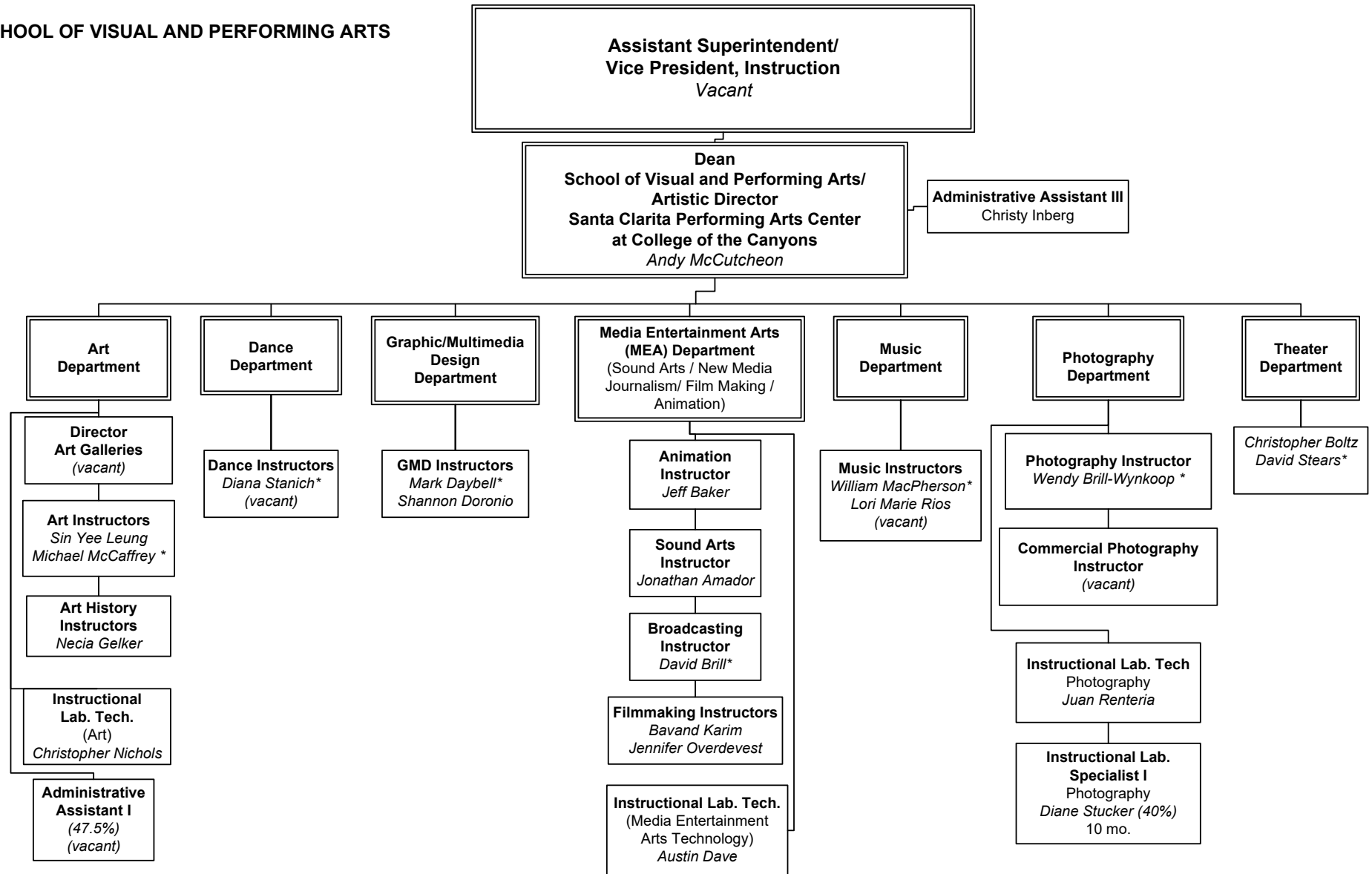
G – Grant Funded

CCC = Canyon Country Campus

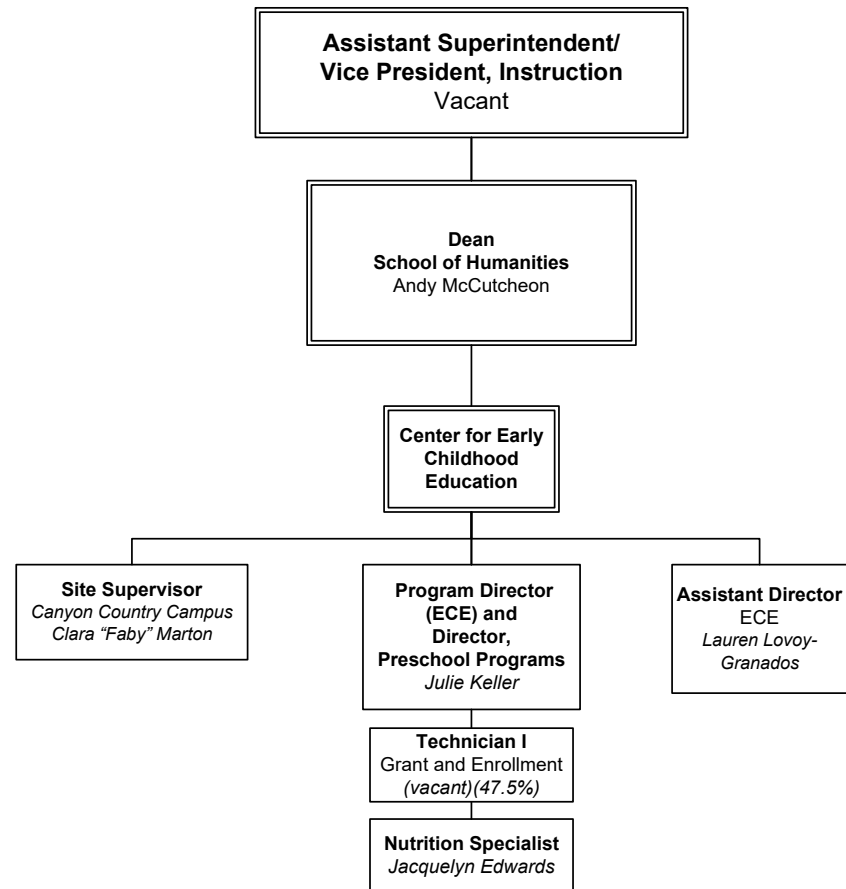
1/27/2026

Page 32

SCHOOL OF VISUAL AND PERFORMING ARTS



CENTER FOR EARLY CHILDHOOD EDUCATION



COLLEGE OF THE CANYONS FOUNDATION ORGANIZATION

