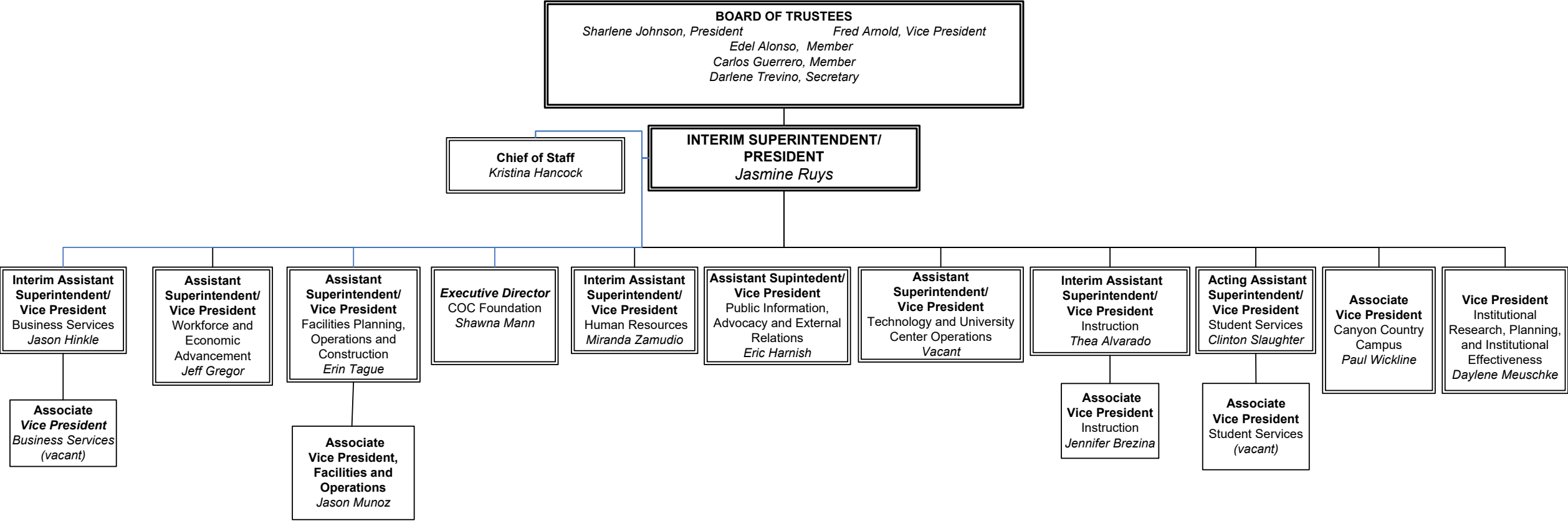


ADMINISTRATIVE ORGANIZATIONAL CHART

Santa Clarita Community College District  
College of the Canyons

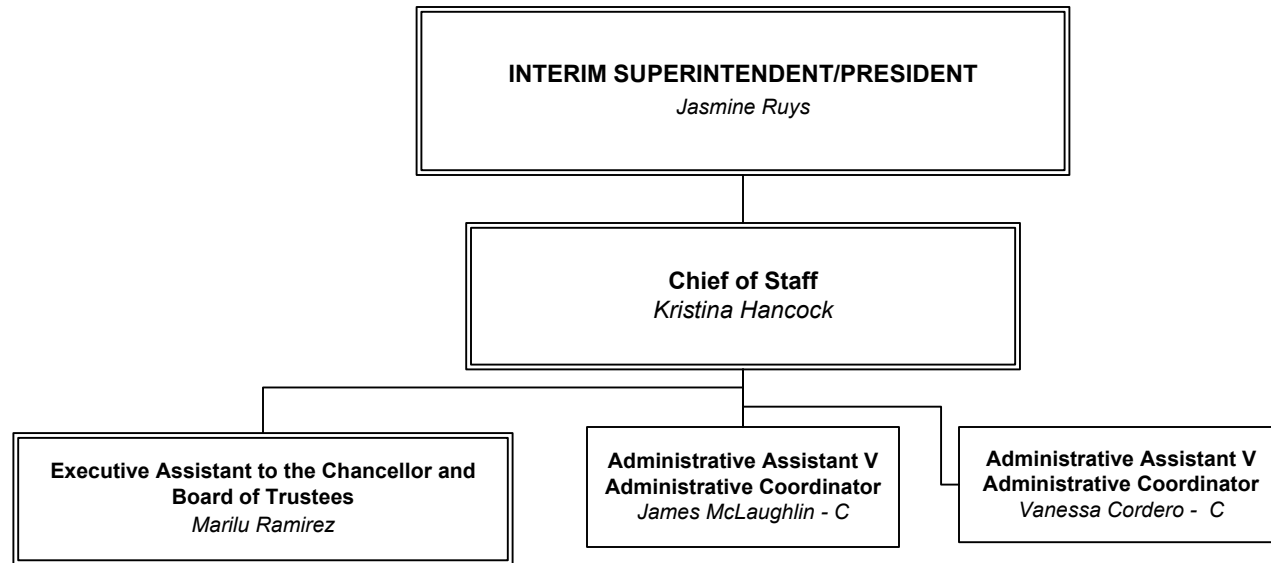


**Santa Clarita Community College District  
College of the Canyons Organization Chart  
Table of Contents**

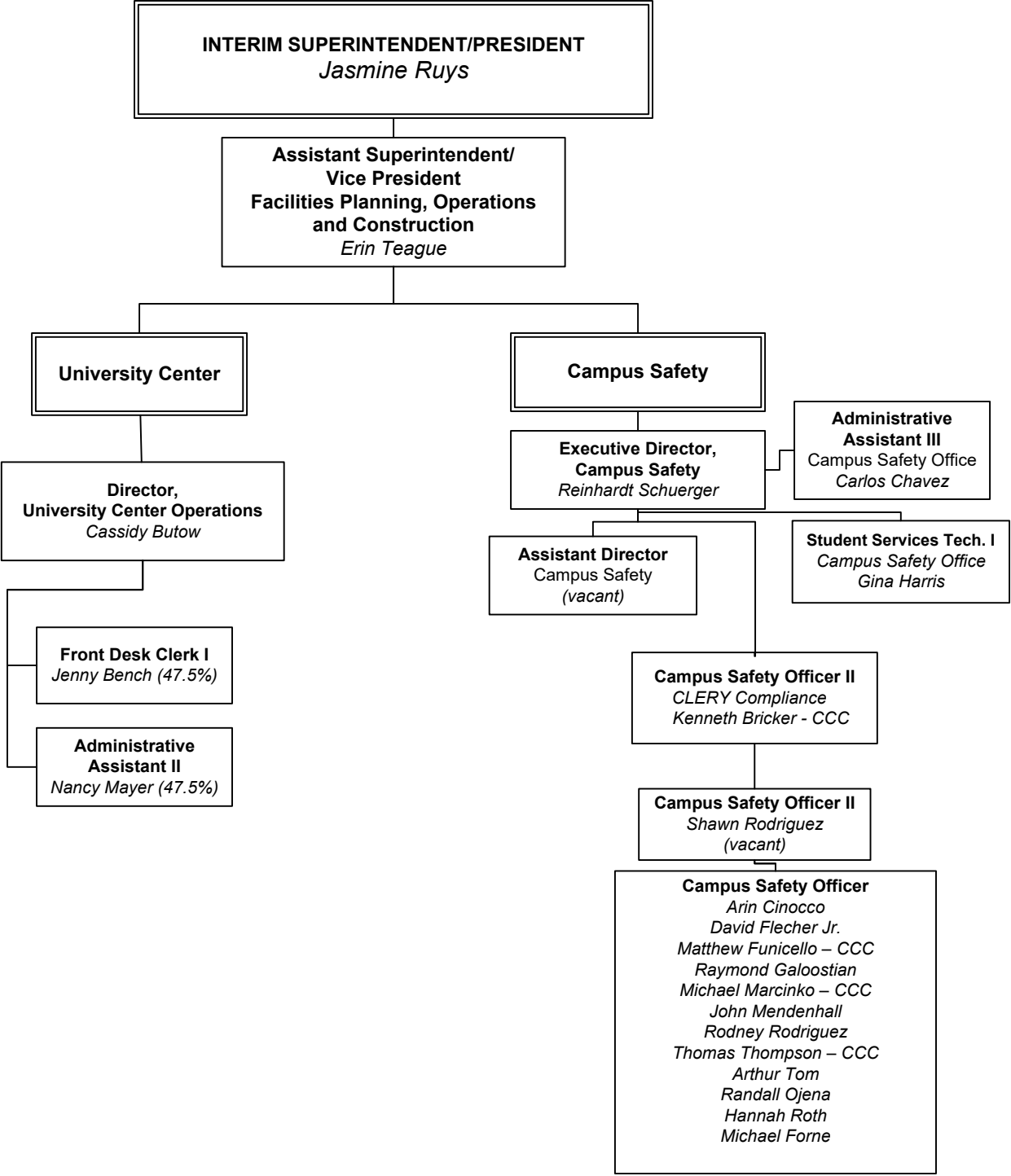
**Department**

- President's Office – Pg. 3
- Campus Safety & University Center – Pg. 4
- Technology and CSS – Pg. 5
- Human Resources – Pg. 6
- Business Services – Pg. 7
- Public Information, Advocacy, External Relations & District Communications – Pg. 8
- Facilities Planning, Operations, and Construction – Pg. 9
- Economic and Workforce Advancement – Pg. 10
- Canyon Country Campus, Infrastructure and Grants – Pg. 11
- Canyon Country Campus, Student Services and Instruction – Pg. 12
- Institutional Research, Planning, and Institutional Effectiveness, Intercultural Center, and CCC Initiatives – Pg. 13
- Student Services – Pg. 14-20
  - Counseling and Enrollment Services - Pg. 16
  - Admission & Records and Online Services Pg. 17
  - Academic Accommodations, Extended Opportunity & Services EOPS/CARE/CalWORKs and Rise, Student Health and Wellness Center – Pg. 18
  - Campus Life and Student Engagement, Financial Aid and Scholarships, Student Resources and Basic Needs, International Affairs and Global engagement, Student Business Office – Pg. 19
  - CWEE Volunteers – Pg. 20
- Instruction – Pg. 21-34
  - Office of Instruction – Pg. 20
  - Education Technology, Learning Resources, and Online Education – Pg. 21
  - Schools of Instruction – Pg. 23
  - School of Applied Technologies – 24
  - School of Business – Pg. 25
  - School of Humanities – Pg. 26
  - School of Social and Behavioral Sciences – Pg. 27
  - School of Kinesiology, Health & Wellness, Fitness & Athletics – Pg. 28
  - School of Health Professions – Pg. 29
  - School of Public Safety – 30
  - School of Mathematics, Sciences, & Engineering – Pg. 31
  - School of Visual and Performing Arts – Pg. 32
  - Center for Early Childhood Education – Pg. 33
- College of the Canyons Foundation Organization – Pg. 35

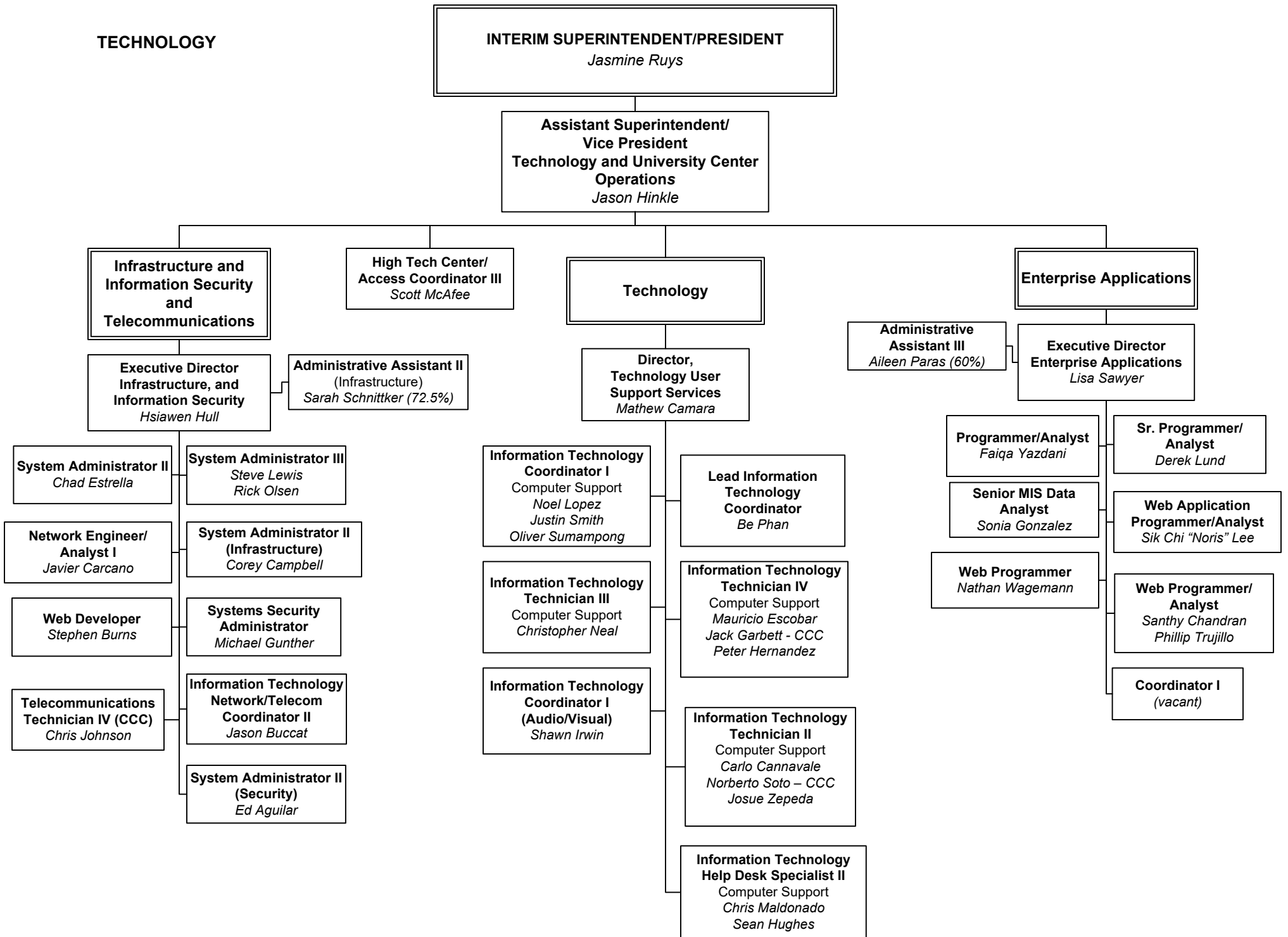
## PRESIDENT'S OFFICE



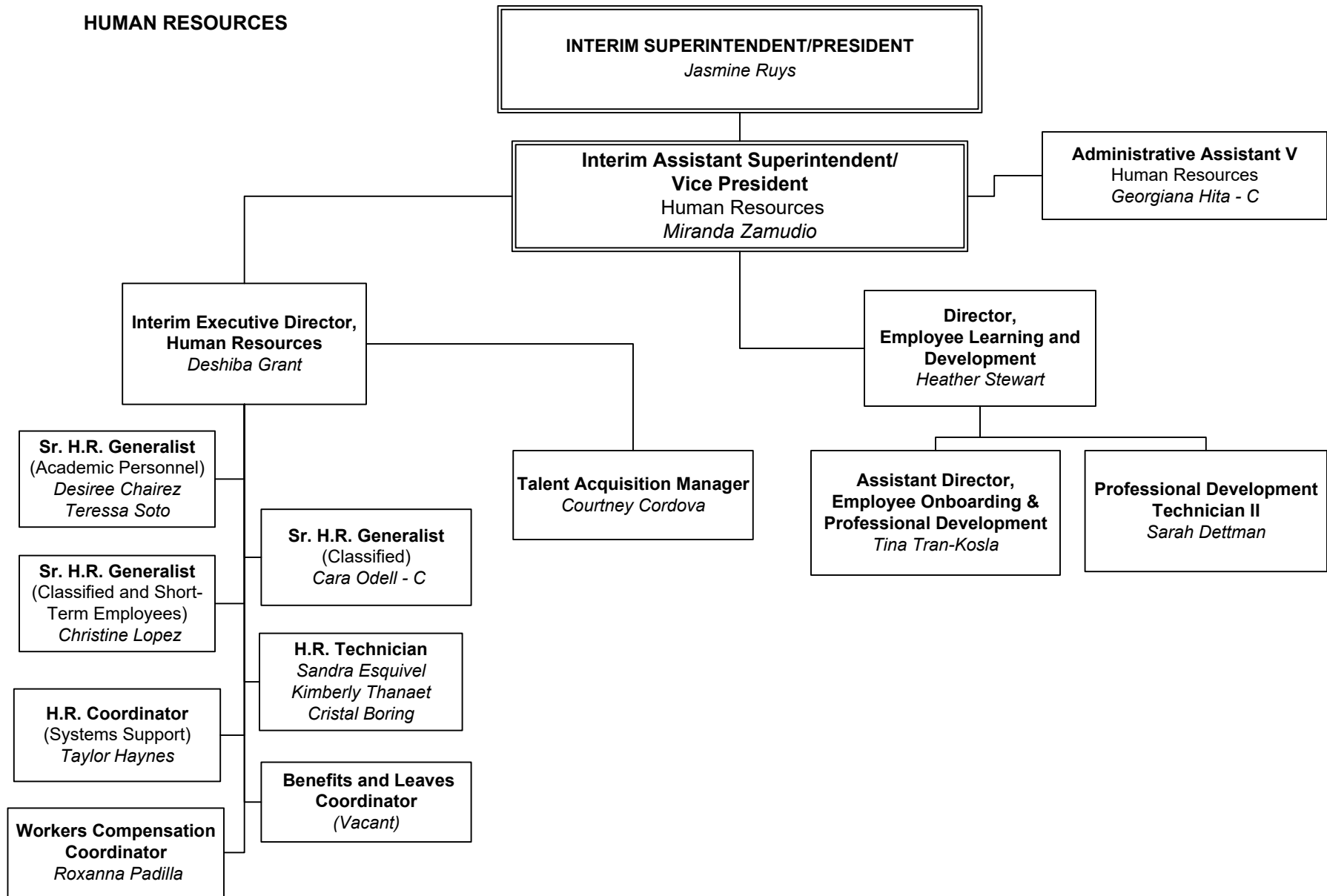
CAMPUS SAFETY  
& UNIVERSITY CENTER



# TECHNOLOGY



## HUMAN RESOURCES



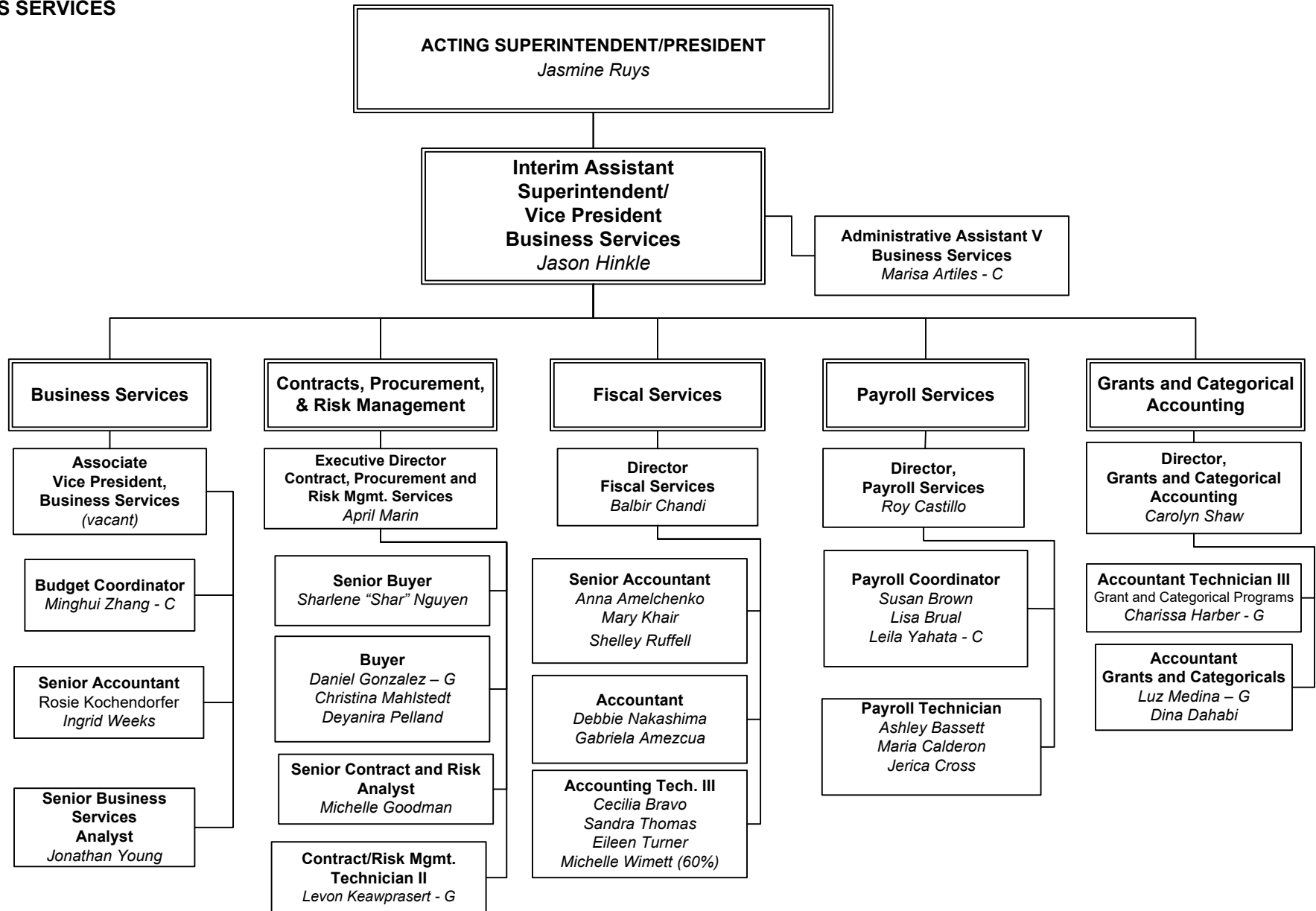
C = Confidential Employee

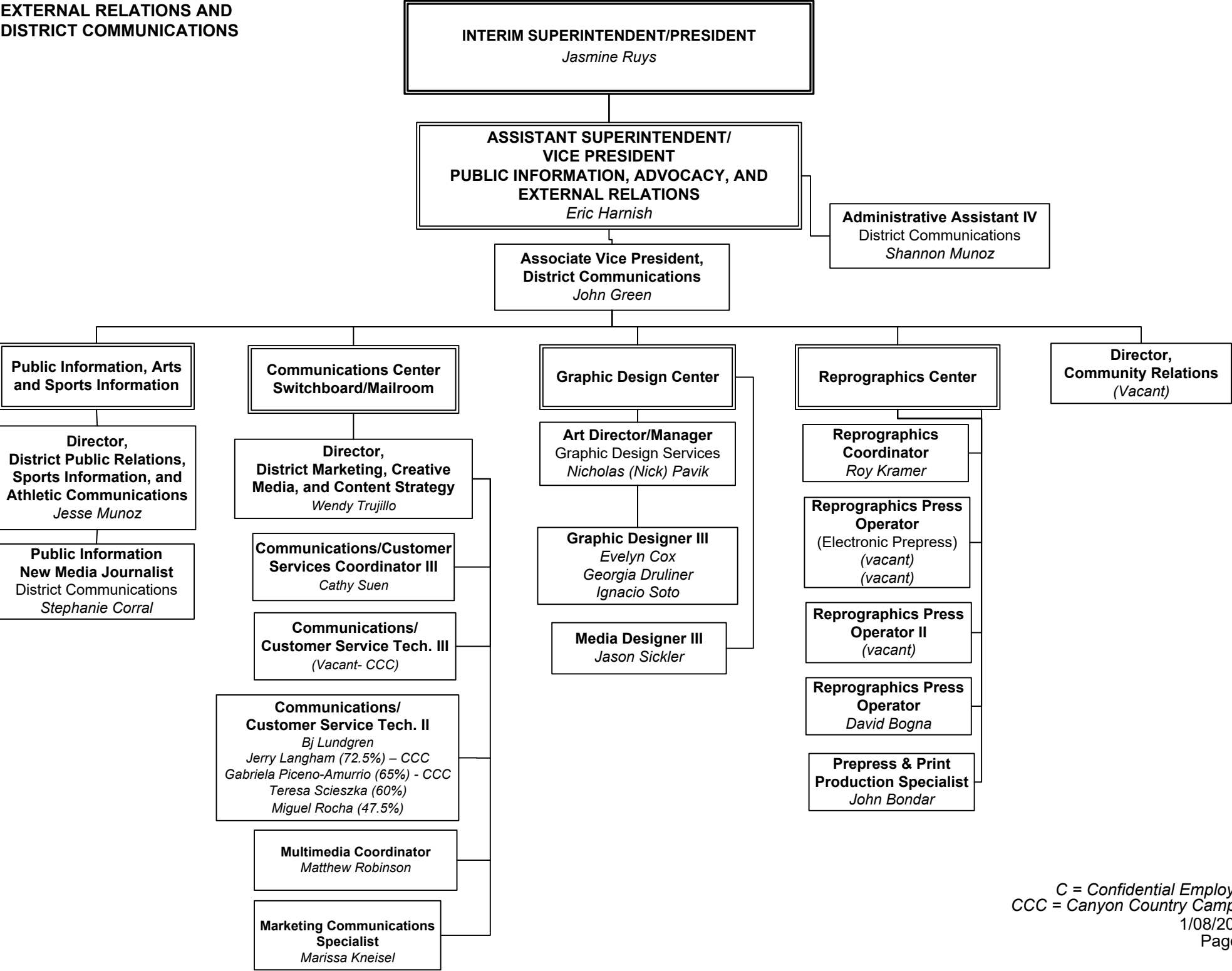
G = Grant Funded

1/08/2026

Page 6

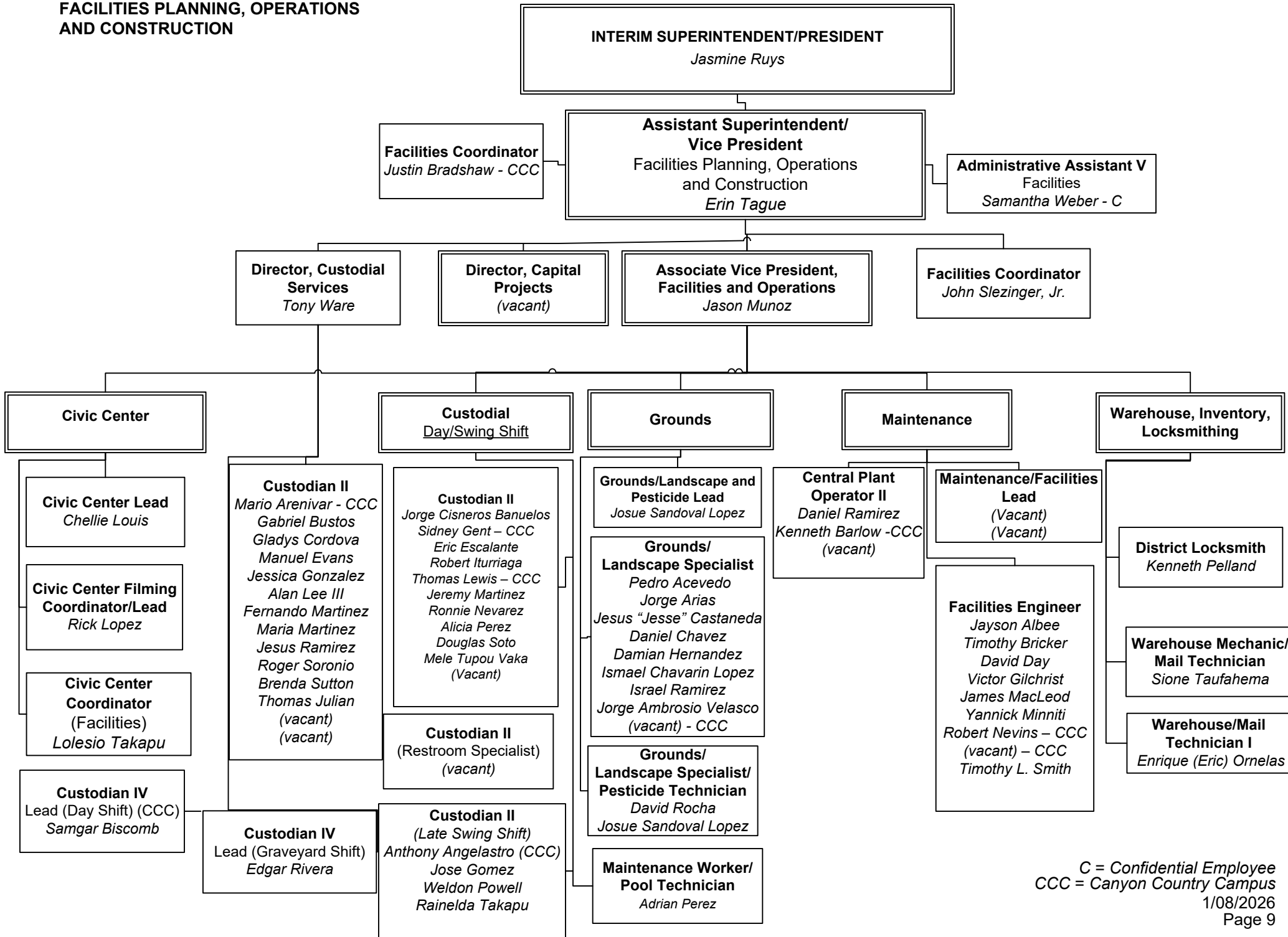
## BUSINESS SERVICES



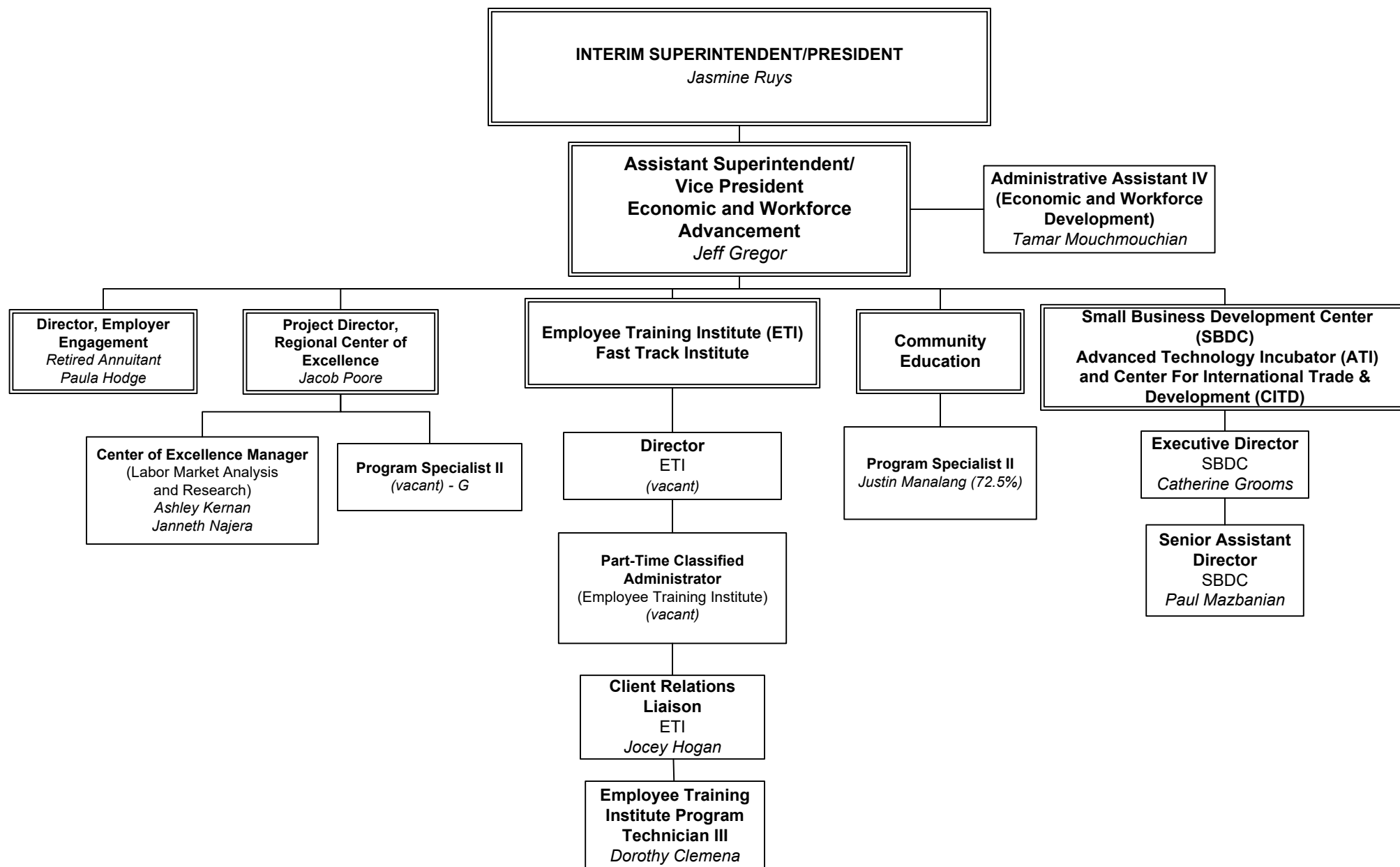




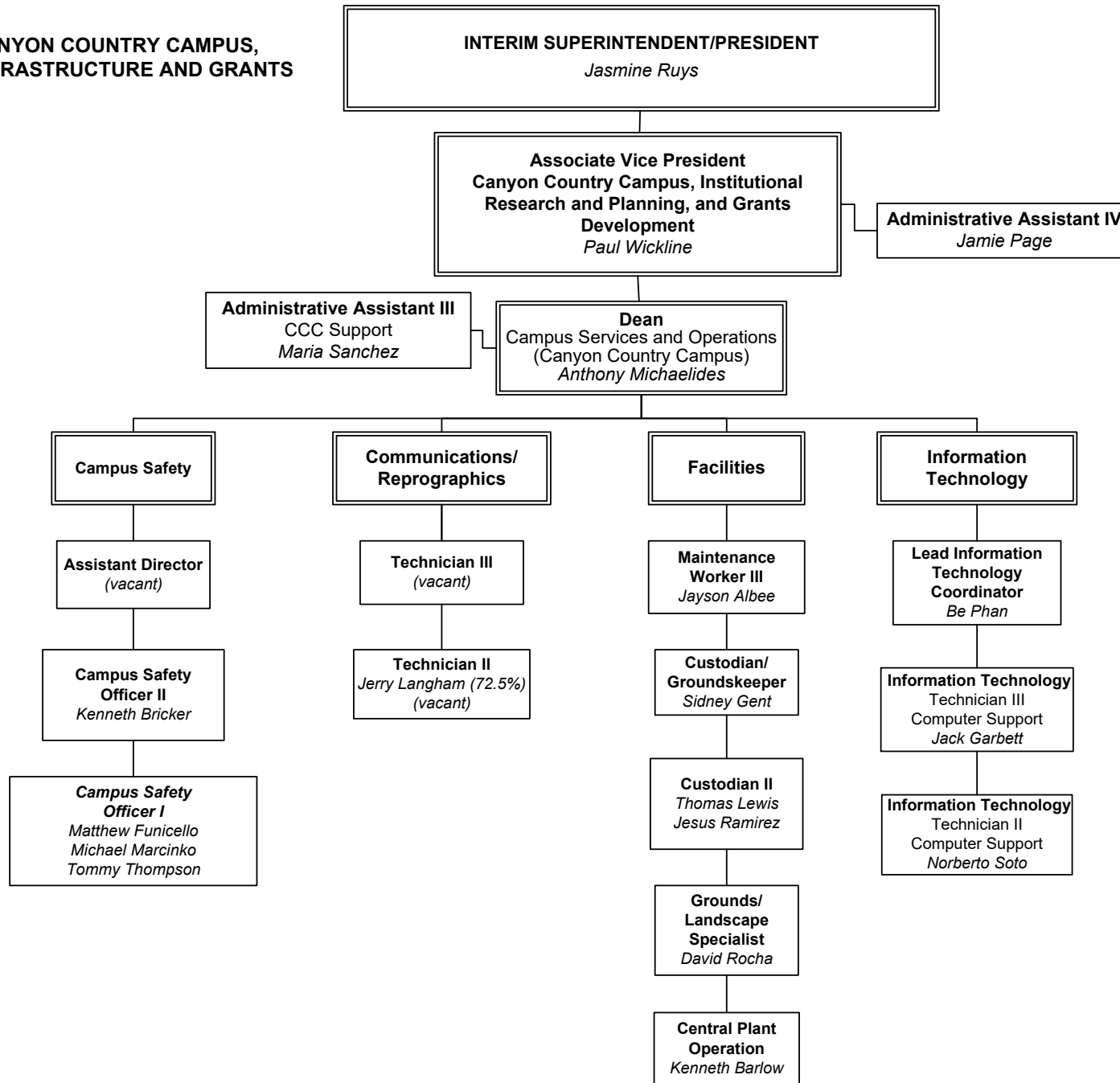
**FACILITIES PLANNING, OPERATIONS  
AND CONSTRUCTION**



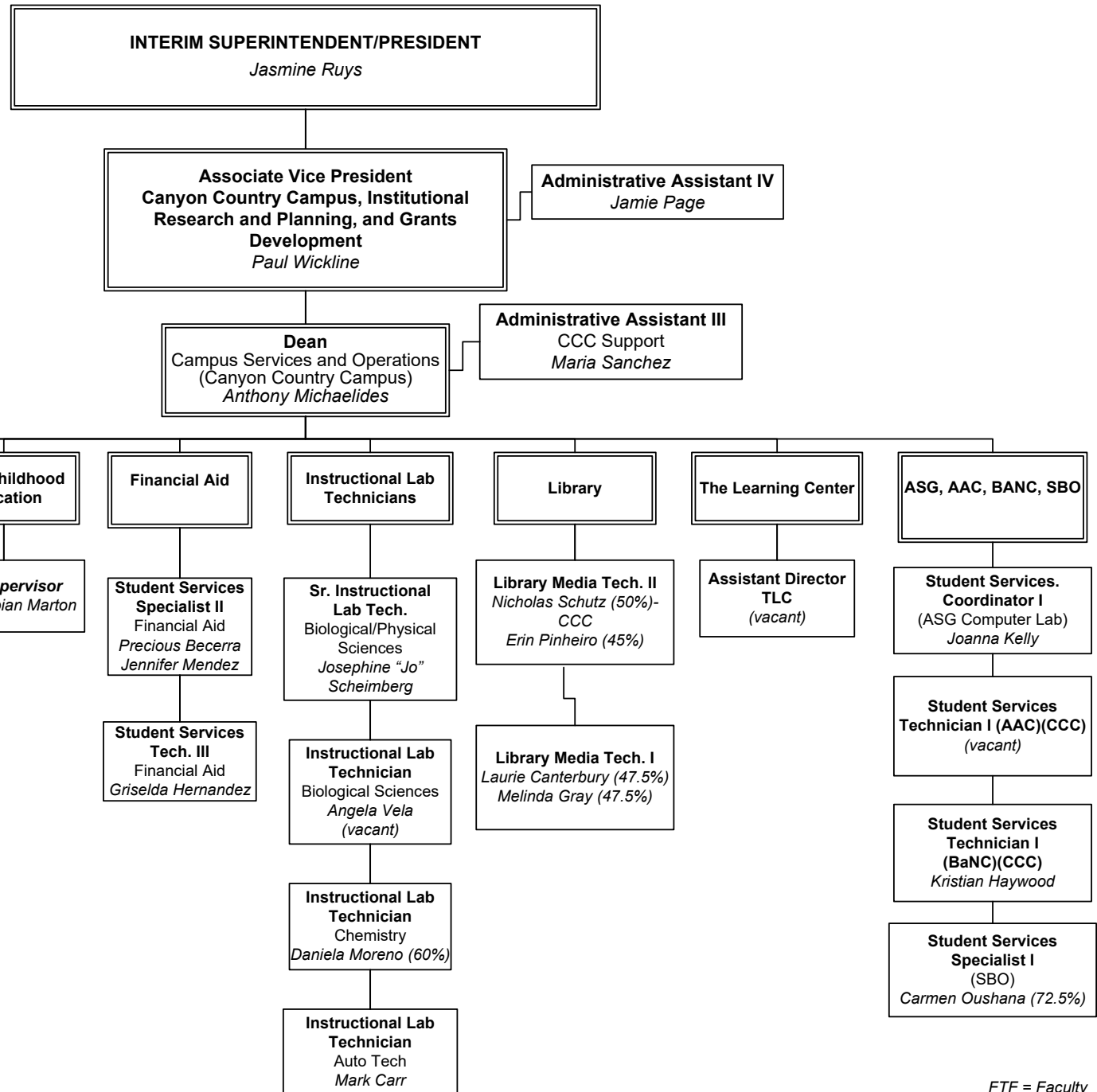
## ECONOMIC & WORKFORCE ADVANCEMENT



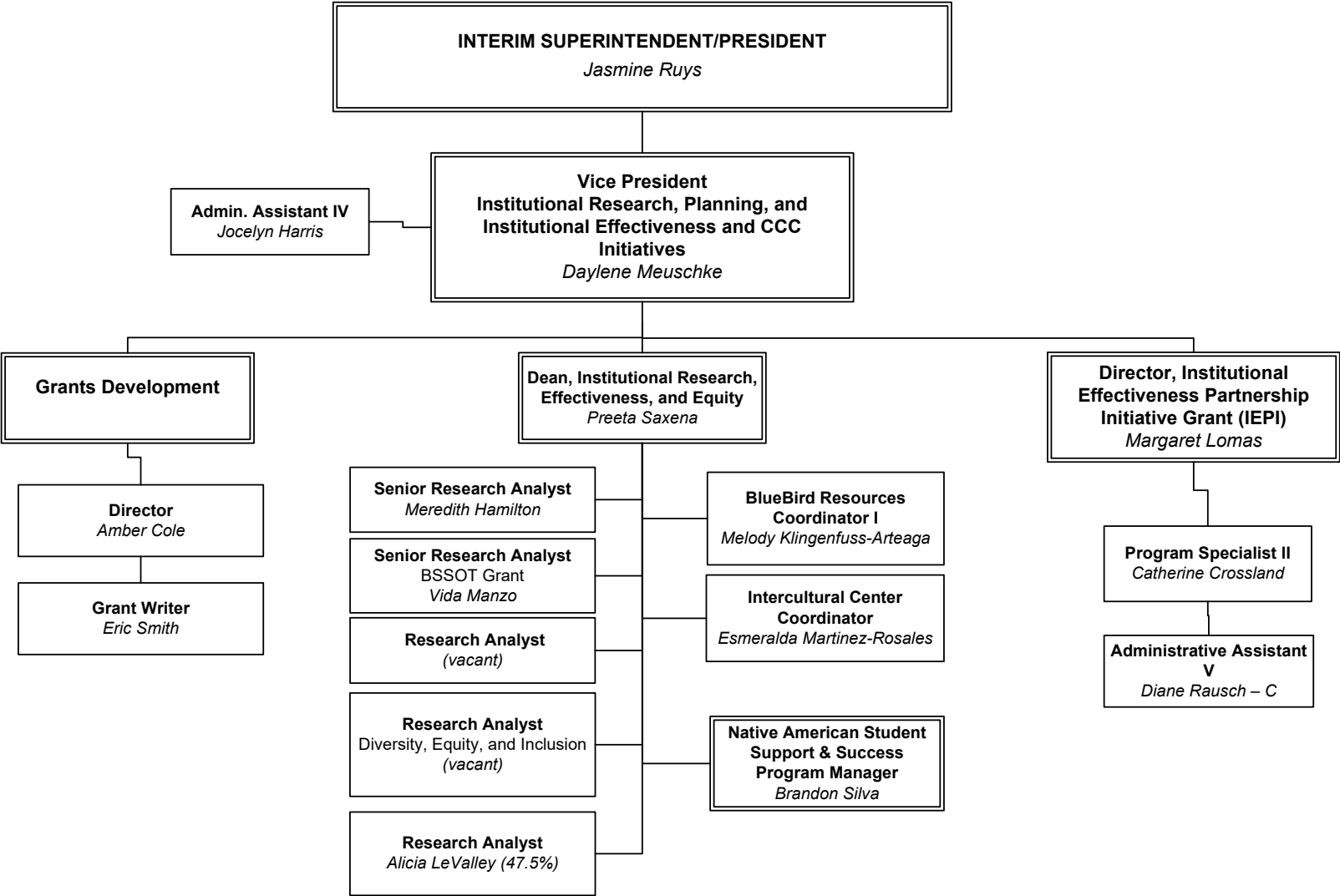
**CANYON COUNTRY CAMPUS,  
INFRASTRUCTURE AND GRANTS**



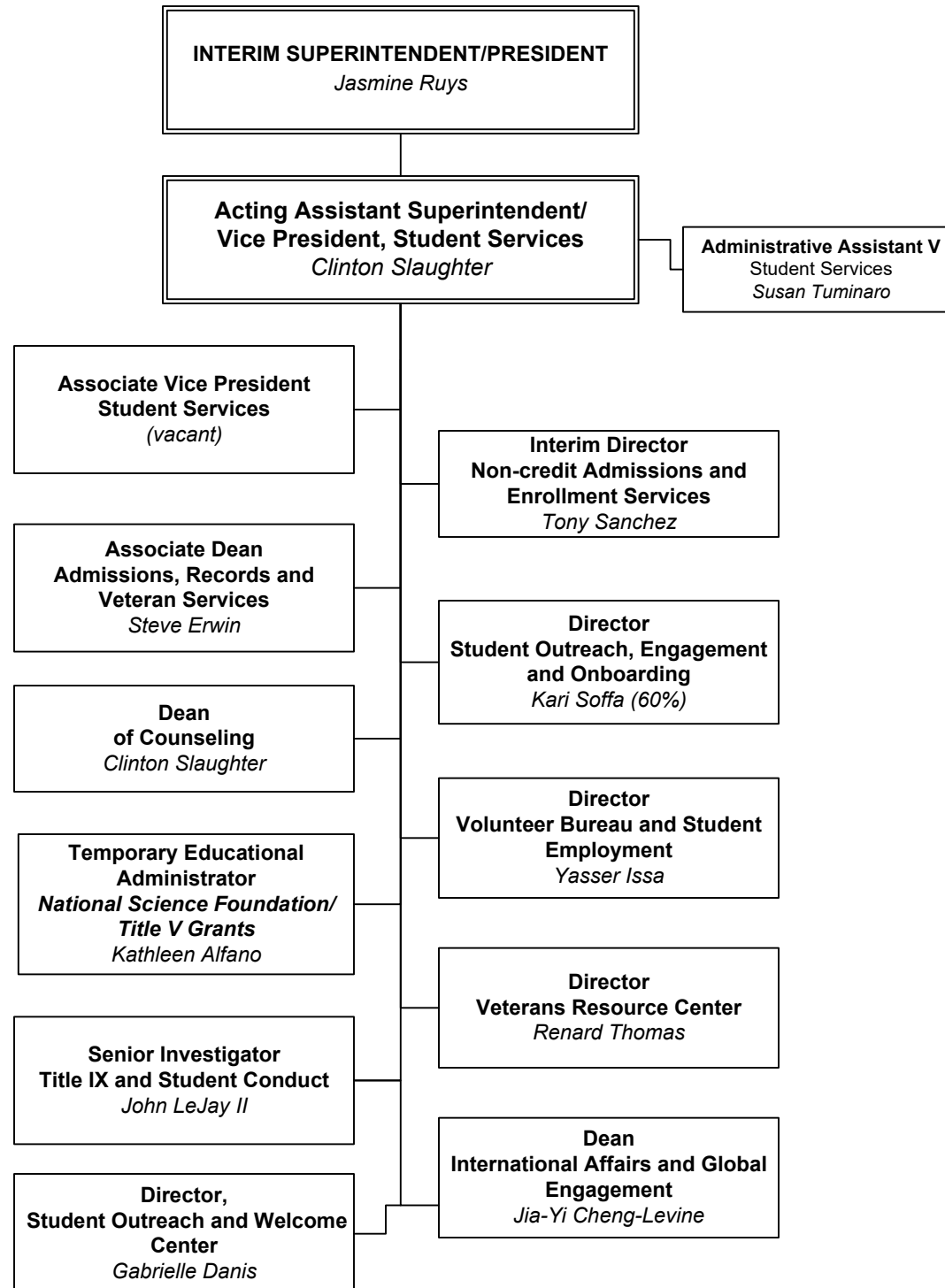
**CANYON COUNTRY CAMPUS,  
INSTRUCTION AND STUDENT SERVICES**



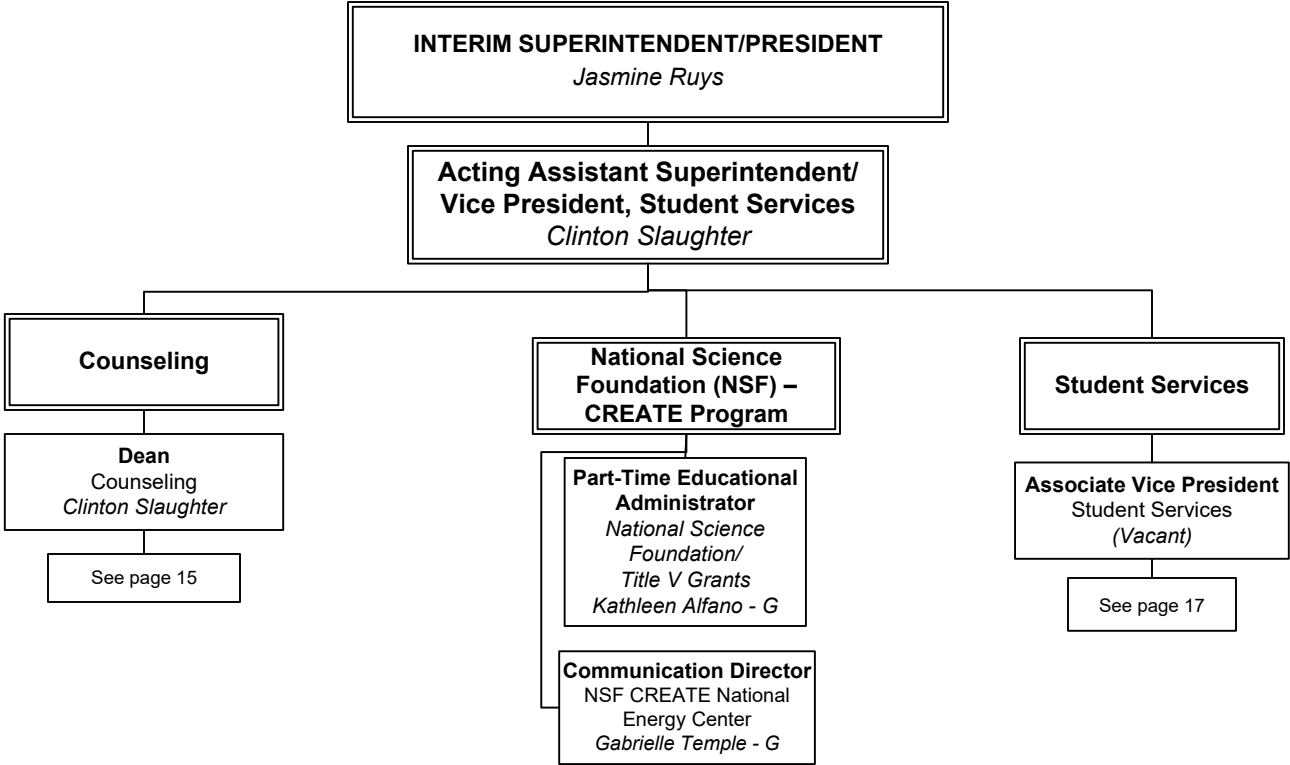
INSTITUTIONAL RESEARCH  
PLANNING, AND INSTITUTIONAL EFFECTIVENESS,  
INTERCULTURAL CENTER  
AND CCC INITIATIVES



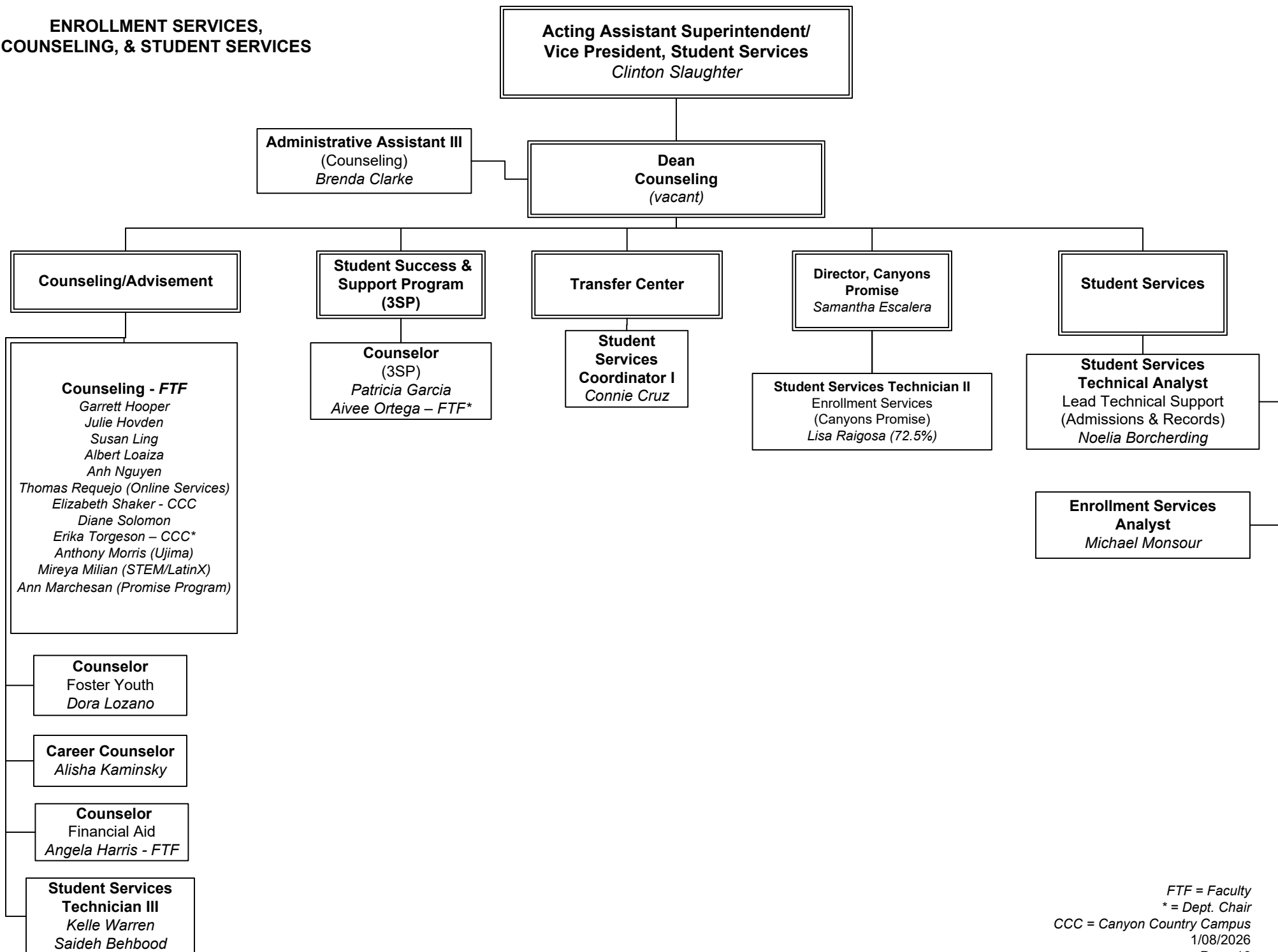
## STUDENT SERVICES



STUDENT SERVICES

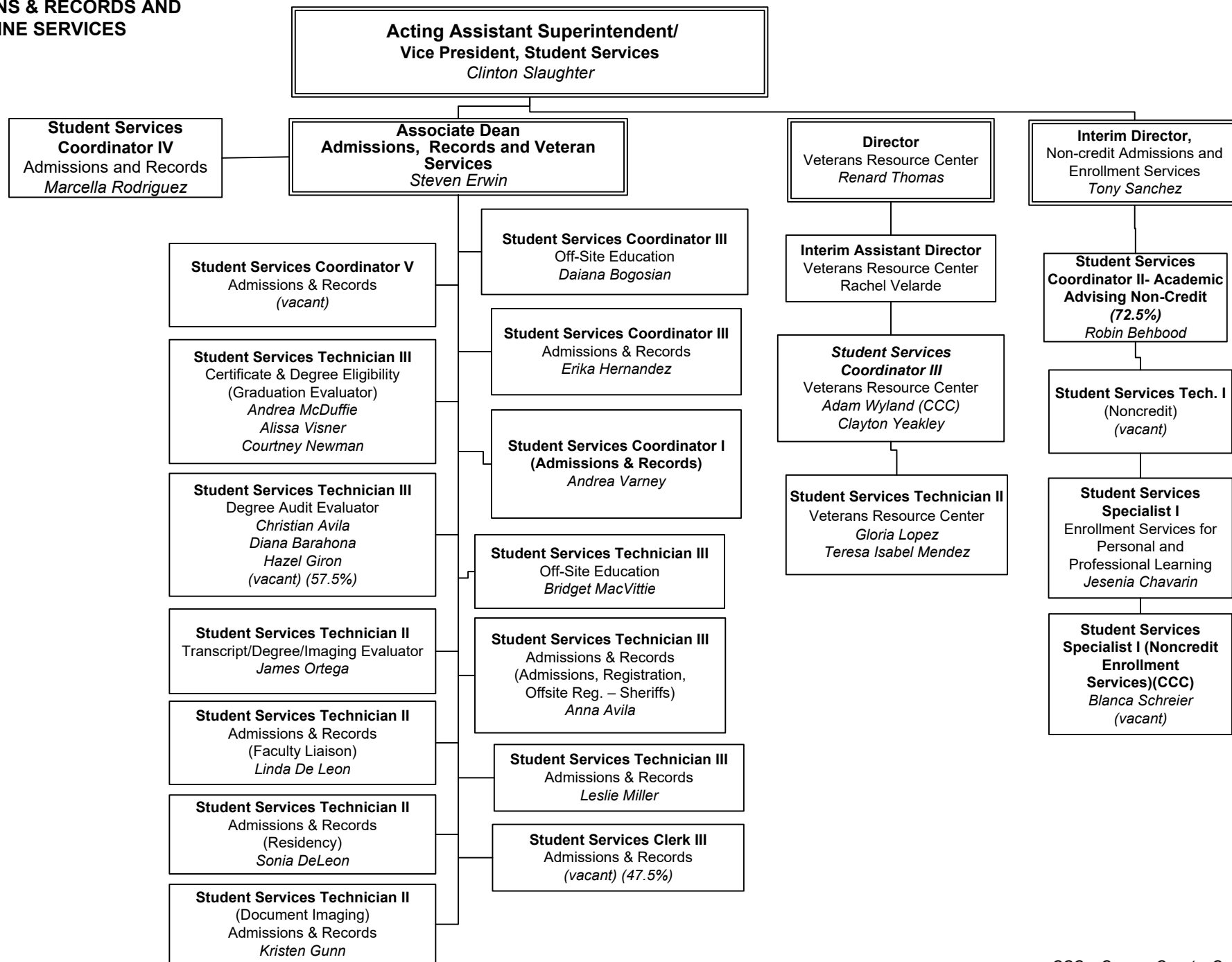


**ENROLLMENT SERVICES,  
COUNSELING, & STUDENT SERVICES**





**ADMISSIONS & RECORDS AND  
ONLINE SERVICES**

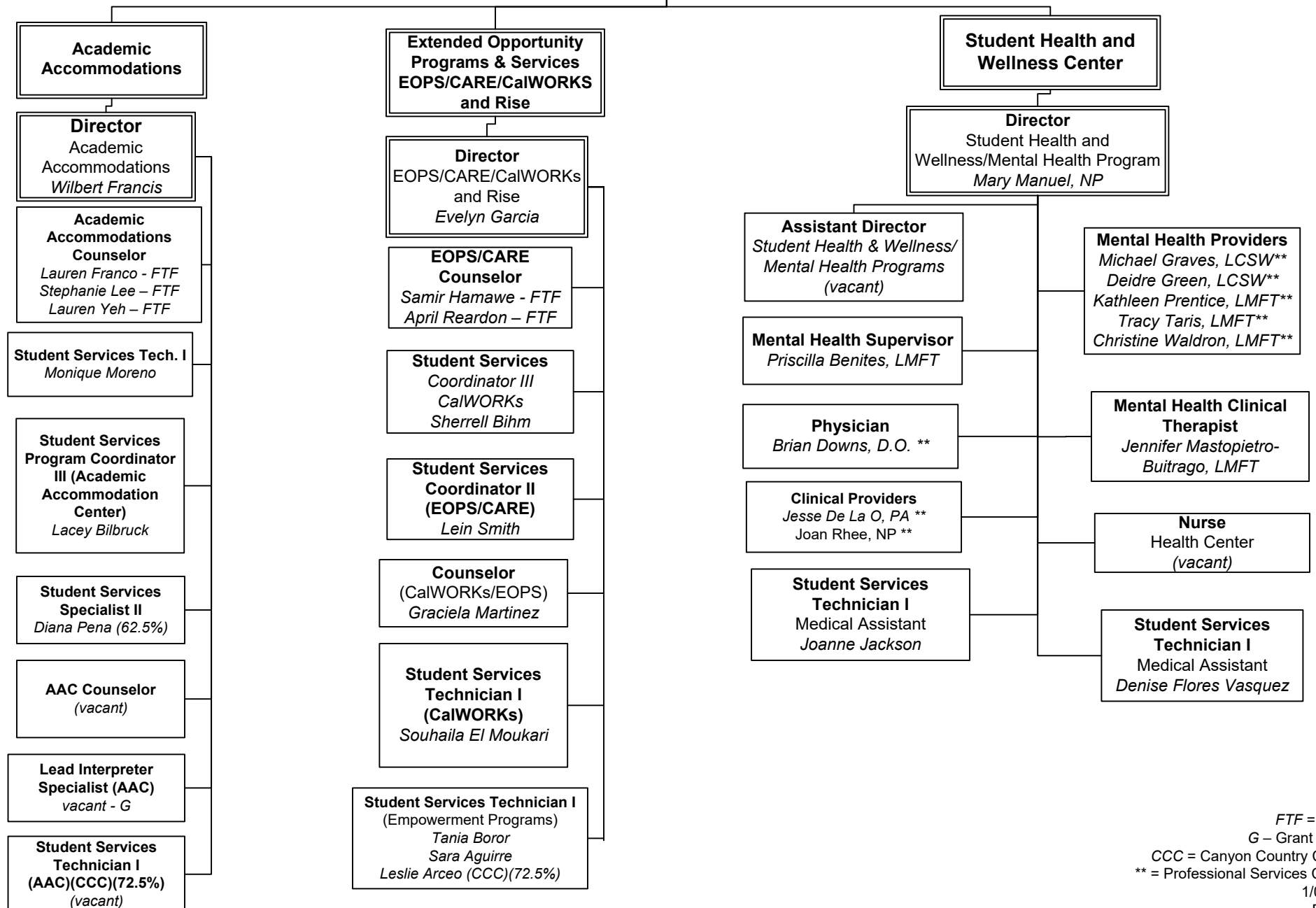


## STUDENT SERVICES

**Acting Assistant Superintendent/  
Vice President, Student Services**  
*Clinton Slaughter*

**Associate Vice President  
Student Services**  
*(Vacant)*

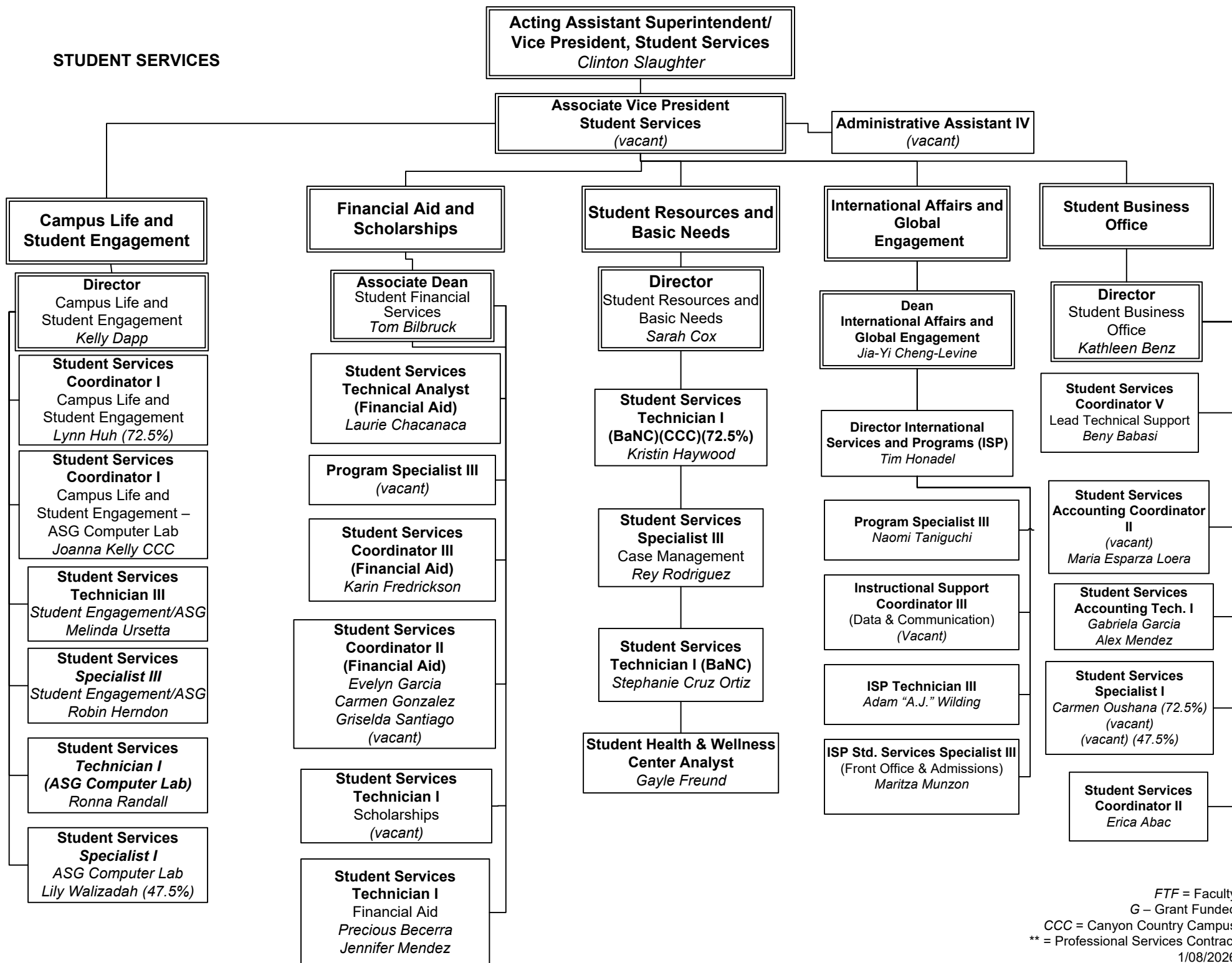
**Administrative Assistant IV**  
*(vacant)*



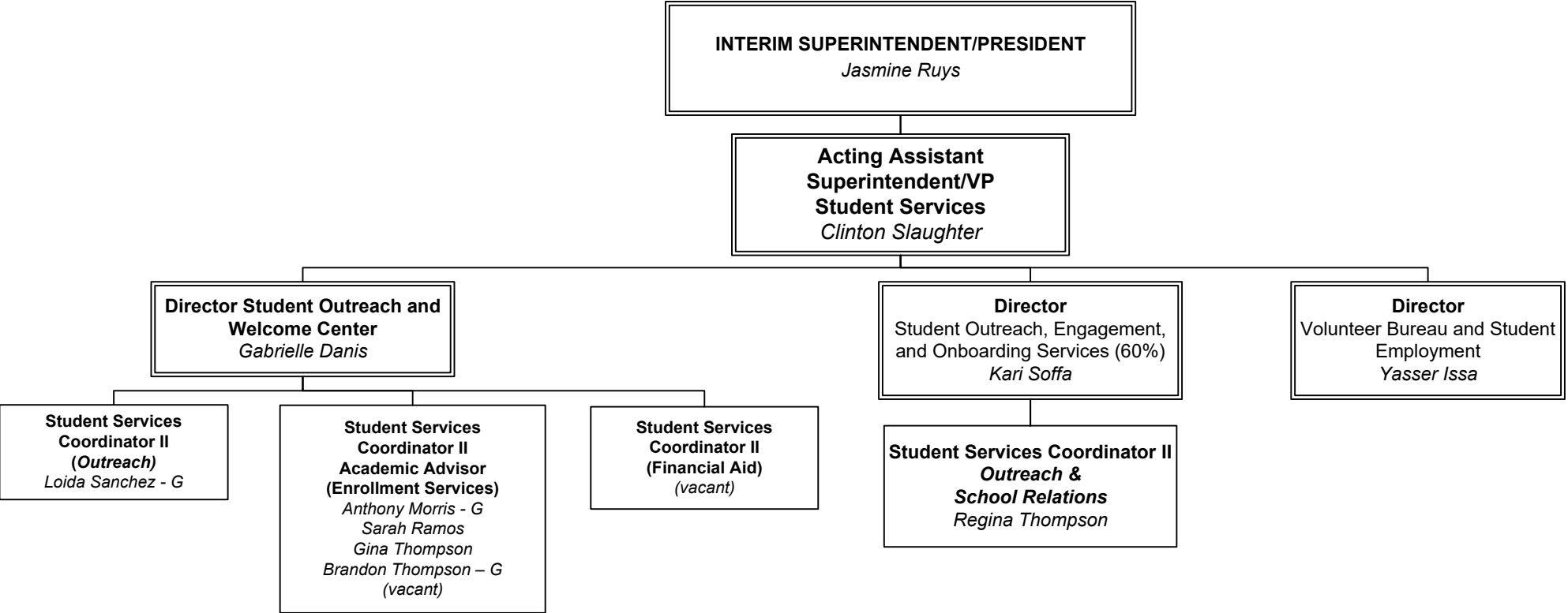
FTF = Faculty  
G – Grant Funded  
CCC = Canyon Country Campus  
\*\* = Professional Services Contract

1/08/2026

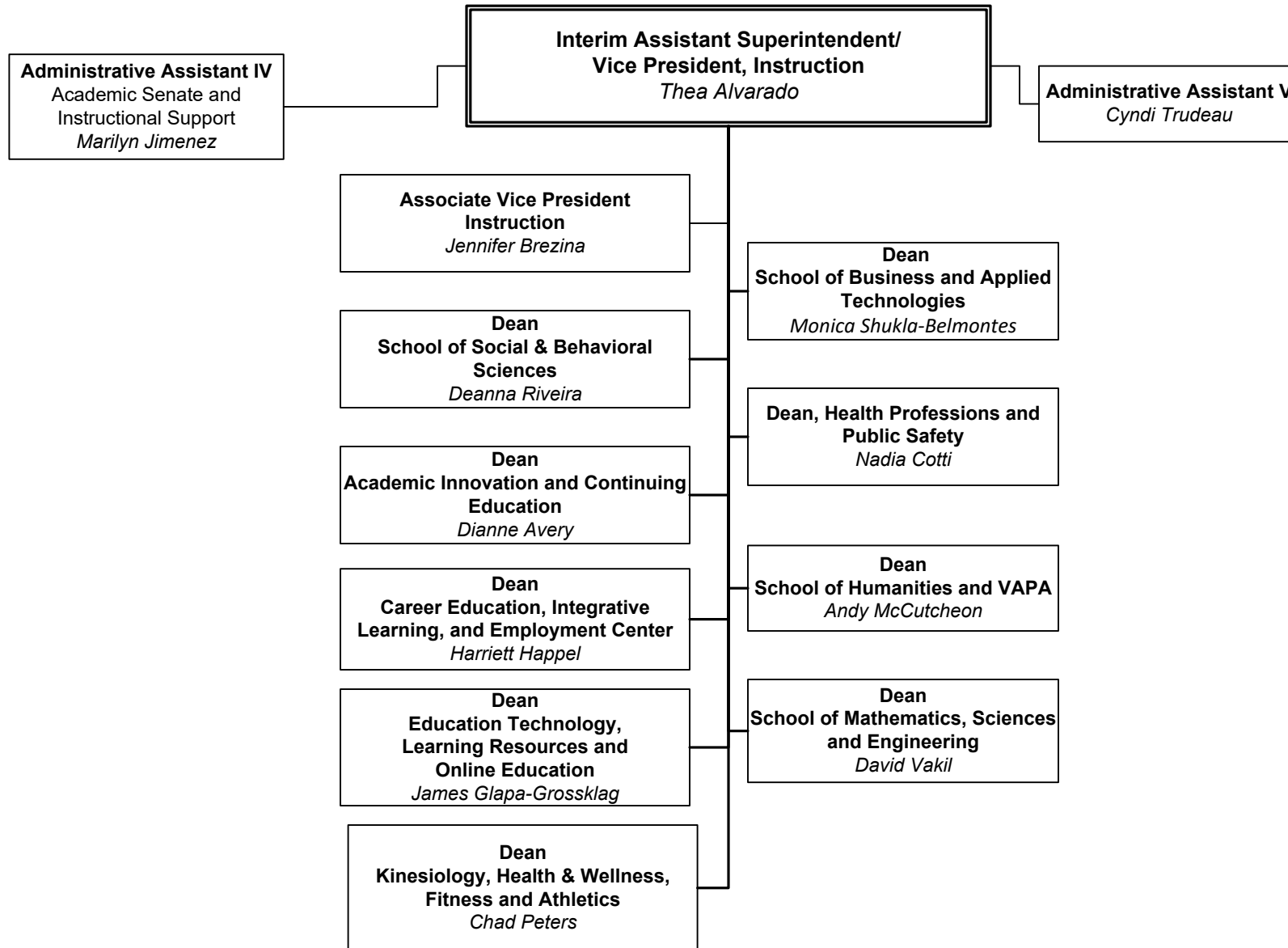
## STUDENT SERVICES



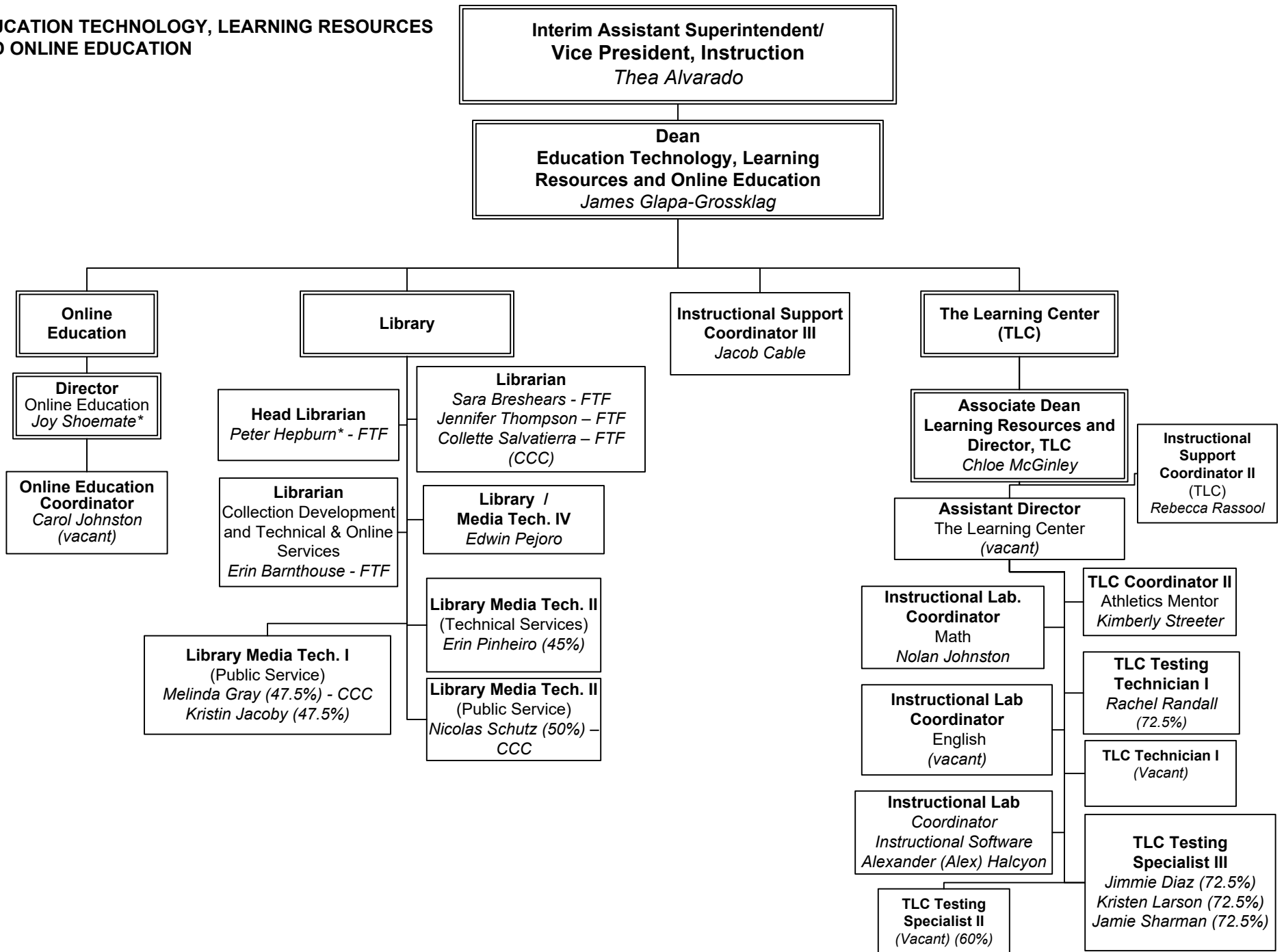
**STUDENT SERVICES**



## OFFICE OF INSTRUCTION

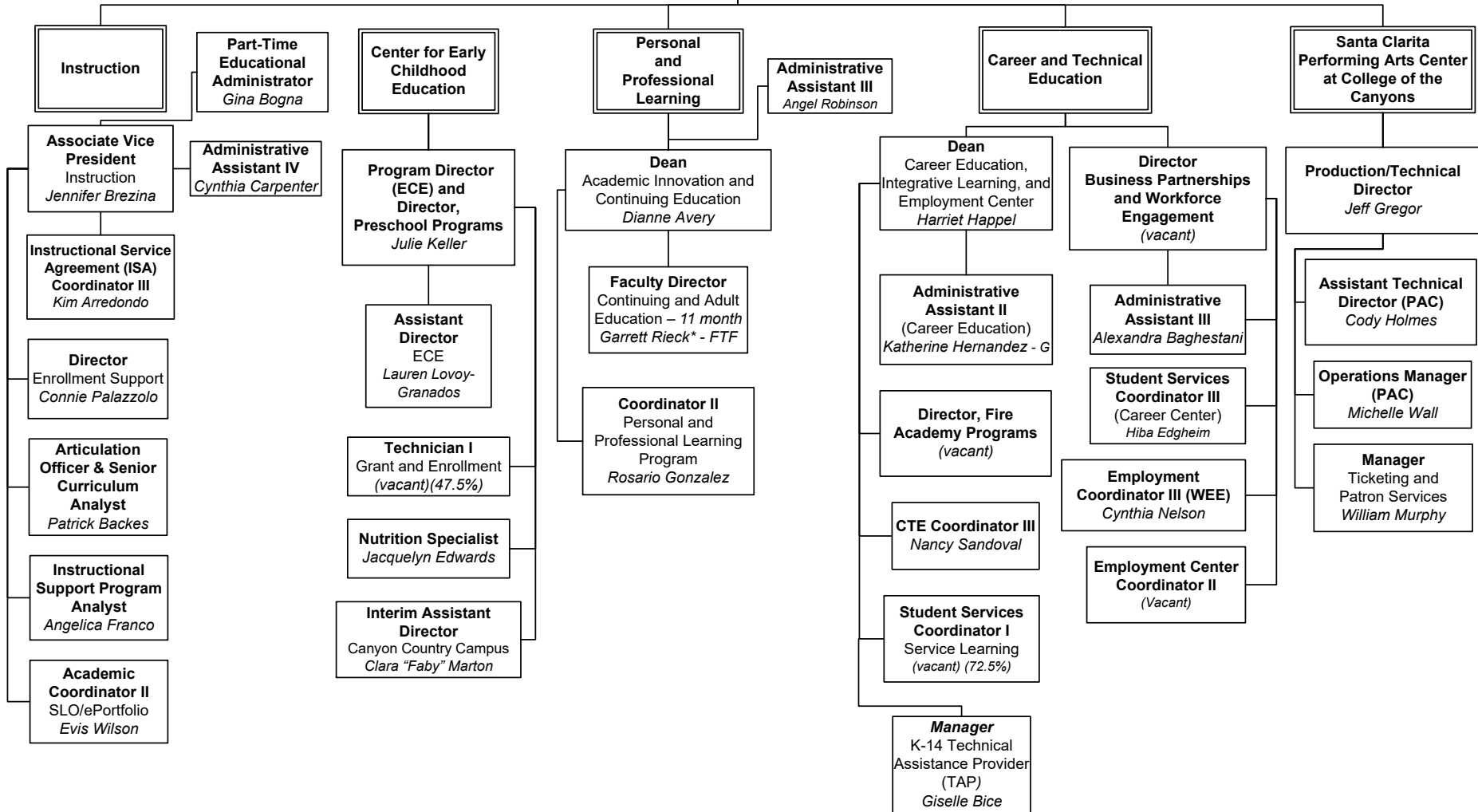


**EDUCATION TECHNOLOGY, LEARNING RESOURCES  
AND ONLINE EDUCATION**

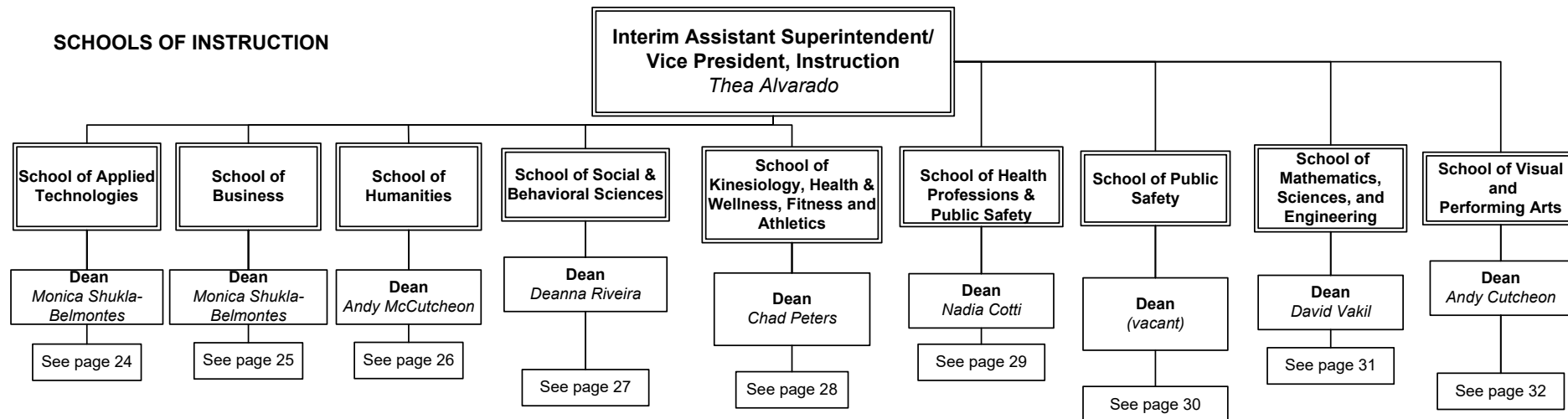


# INSTRUCTION

## Interim Assistant Superintendent/ Vice President, Instruction Thea Alvarado



## SCHOOLS OF INSTRUCTION



FTF = Full-Time Faculty

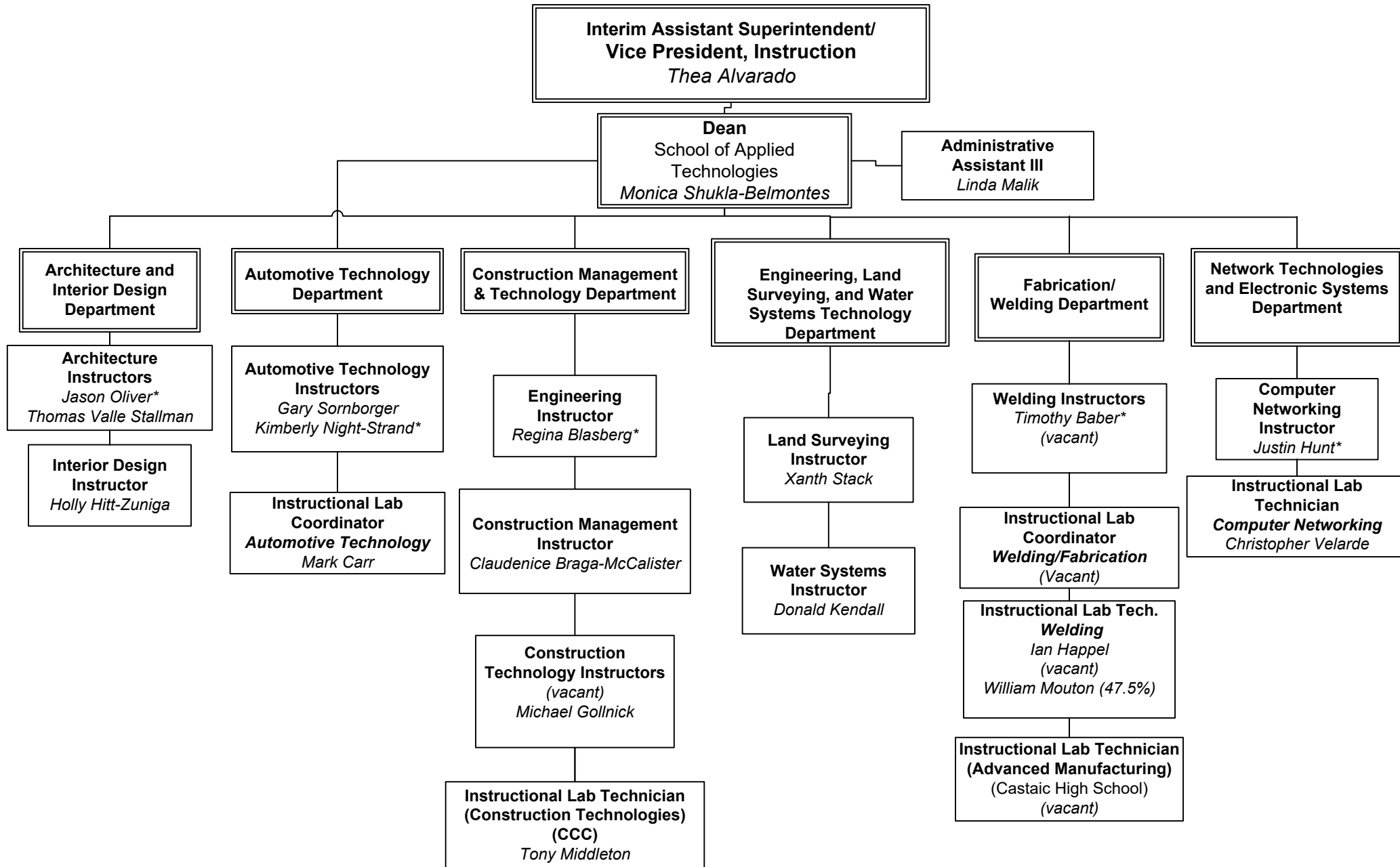
G = Grant Funded

1/08/2026

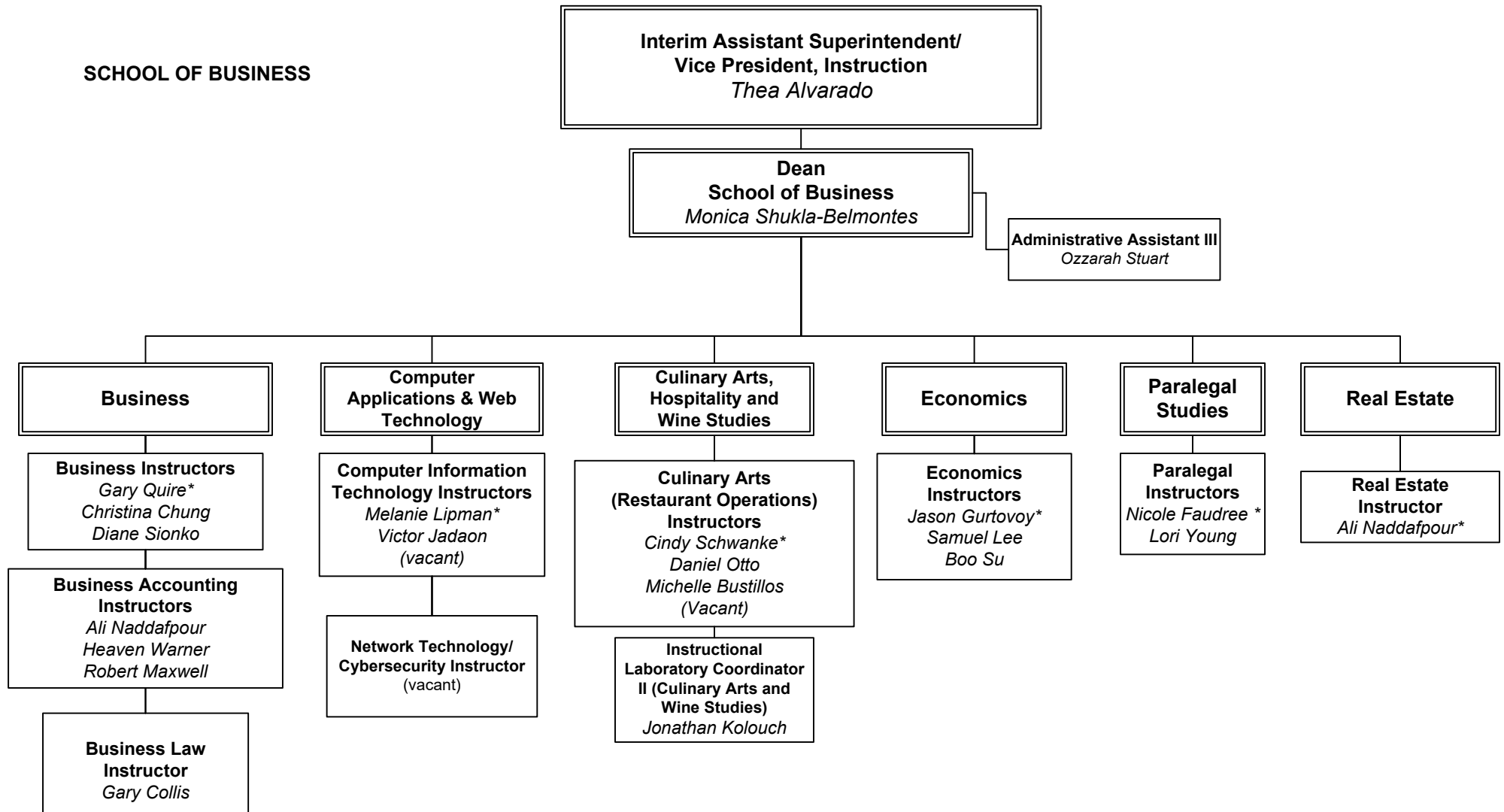
Page 24



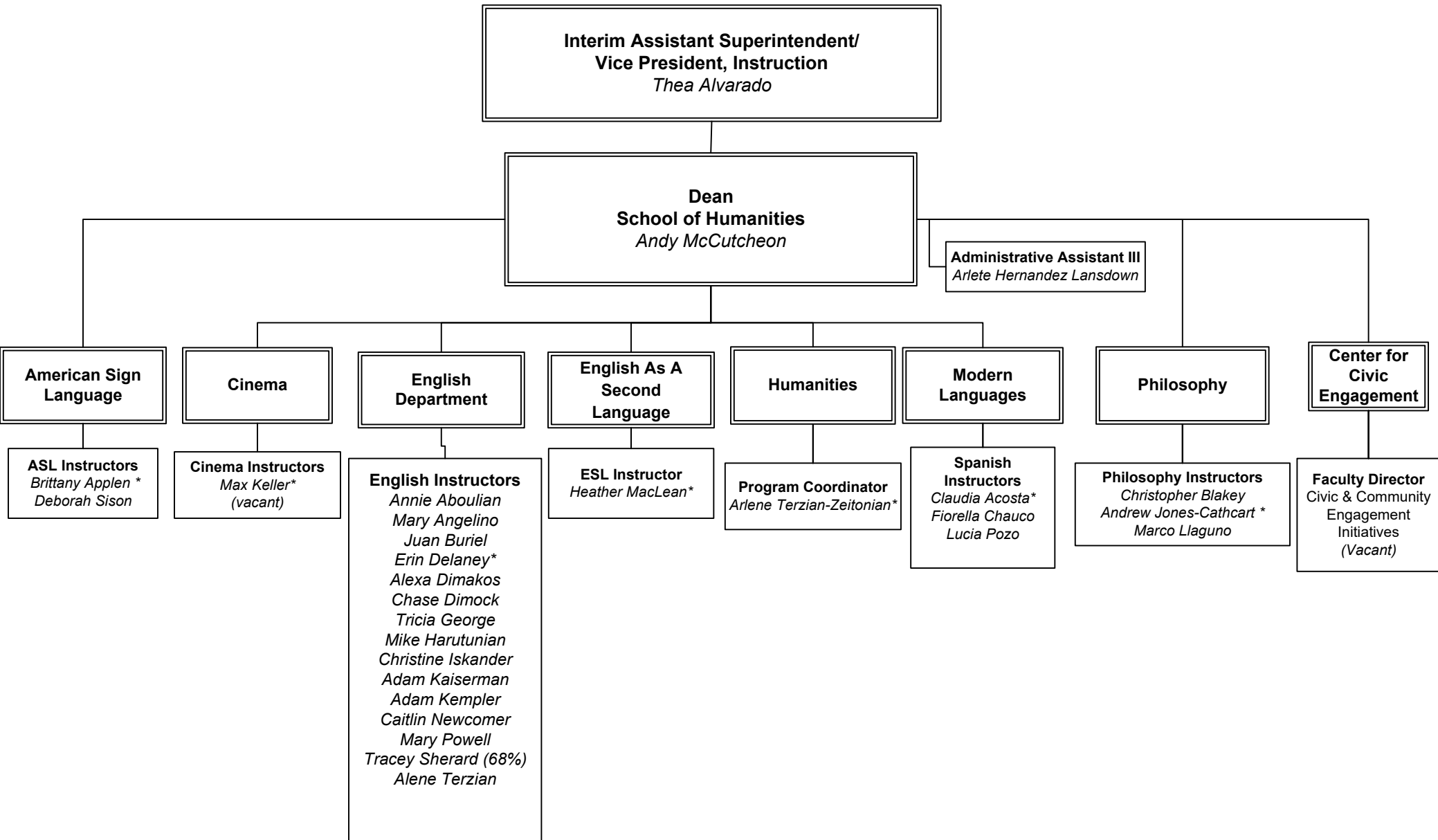
# SCHOOL OF APPLIED TECHNOLOGIES



## SCHOOL OF BUSINESS



**SCHOOL OF HUMANITIES &  
SCHOOL OF SOCIAL AND BEHAVIORAL SCIENCES**



**SCHOOL OF SOCIAL AND  
BEHAVIORAL SCIENCES**

**Interim Assistant Superintendent/  
Vice President, Instruction**  
*Thea Alvarado*

**Dean  
School of Social and Behavioral  
Sciences**  
*Deanna Riveira*

**Administrative Assistant III**  
*Lisette Godinez*

**Anthropology  
Department**

**Anthropology  
Instructors**  
*Sarah Etheridge  
Lisa Malley \*  
Stephanie Meredith*

**Communication  
Studies  
Department**

**Communication  
Studies Instructors**  
*Adam Kaminsky\*  
Karyl Kicenski  
Michael Leach  
David Stevenson  
Tammera Stokes-Rice  
(vacant)*

**Early Childhood  
Education  
Department**

**ECE Instructors**  
*Jennifer Paris\*  
Wendy Ruiz  
(vacant)*

**Ethnic Studies  
Department**

**Chicana/o Studies  
Instructor**  
*Bryant Partida*  
  
**African American  
Studies Instructor**  
*Eddie Becton*

**Foster and  
Kinship Care  
Program**

**Instructor**  
*(vacant)*

**History  
Department**

**History Instructors**  
*Erik Altenbernd  
Michael Felix  
Julianne Johnson  
Sherrill Pennington \*  
Brent Riffel  
John Varga*

**Political  
Science  
Department**

**Political Science  
Instructors**  
*Phil Gussin  
Majid Mosleh\*  
Karl Striepe*

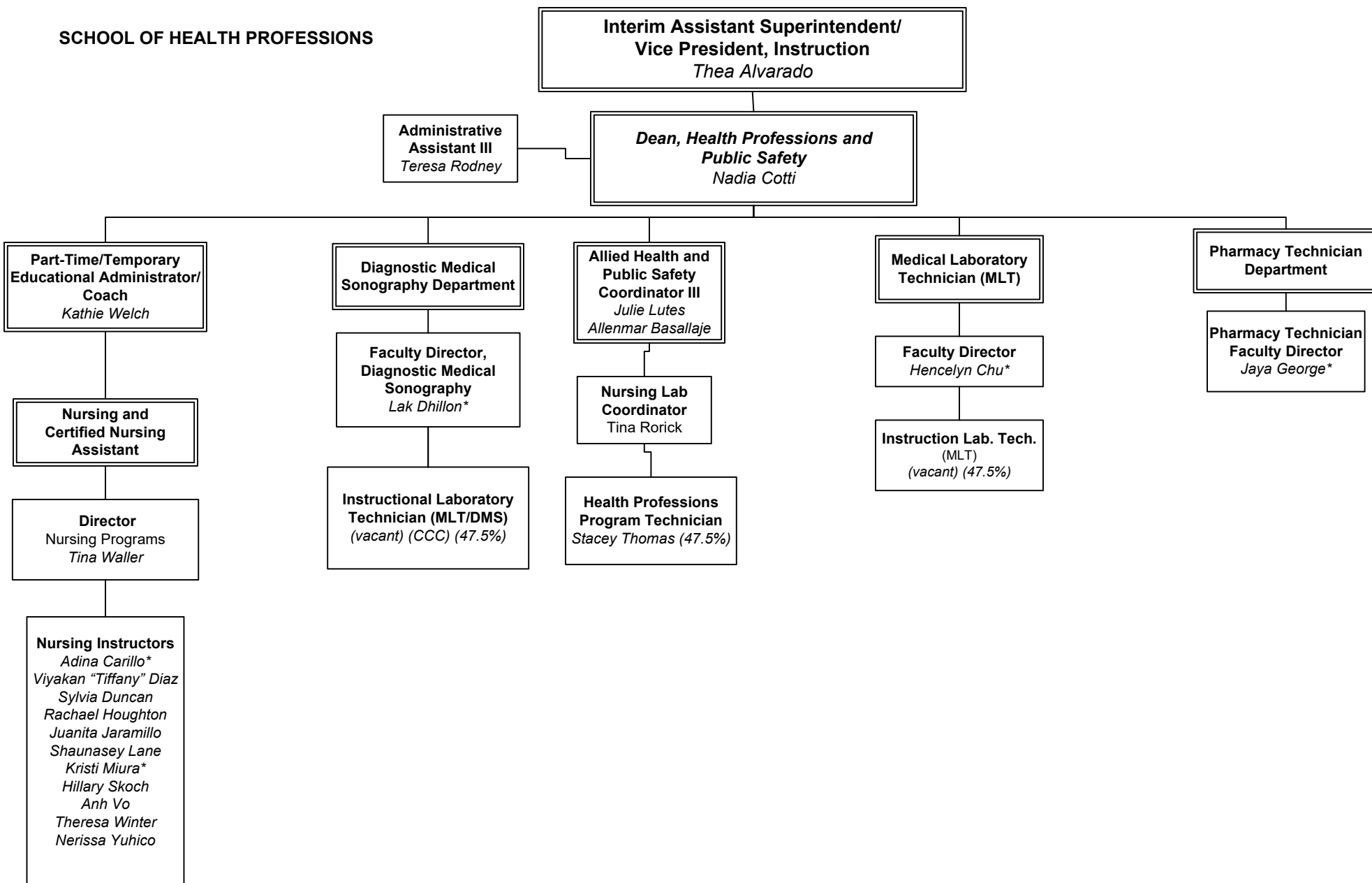
**Psychology  
Department**

**Psychology  
Instructors**  
*Mehgen Andrade  
Michelle LaBrie  
Tammy Mahan  
Nadia Monosov  
Deanna Riveira \*  
Rebecca Shepherd*

**Sociology  
Department**

**Sociology Instructors**  
*Kathryn Coleman \*  
Anne Marengo  
Hernan Ramirez  
Pamela Williams-Paez  
Robert Wonser*

# SCHOOL OF HEALTH PROFESSIONS



FTF = Faculty

\* = Dept. Chair

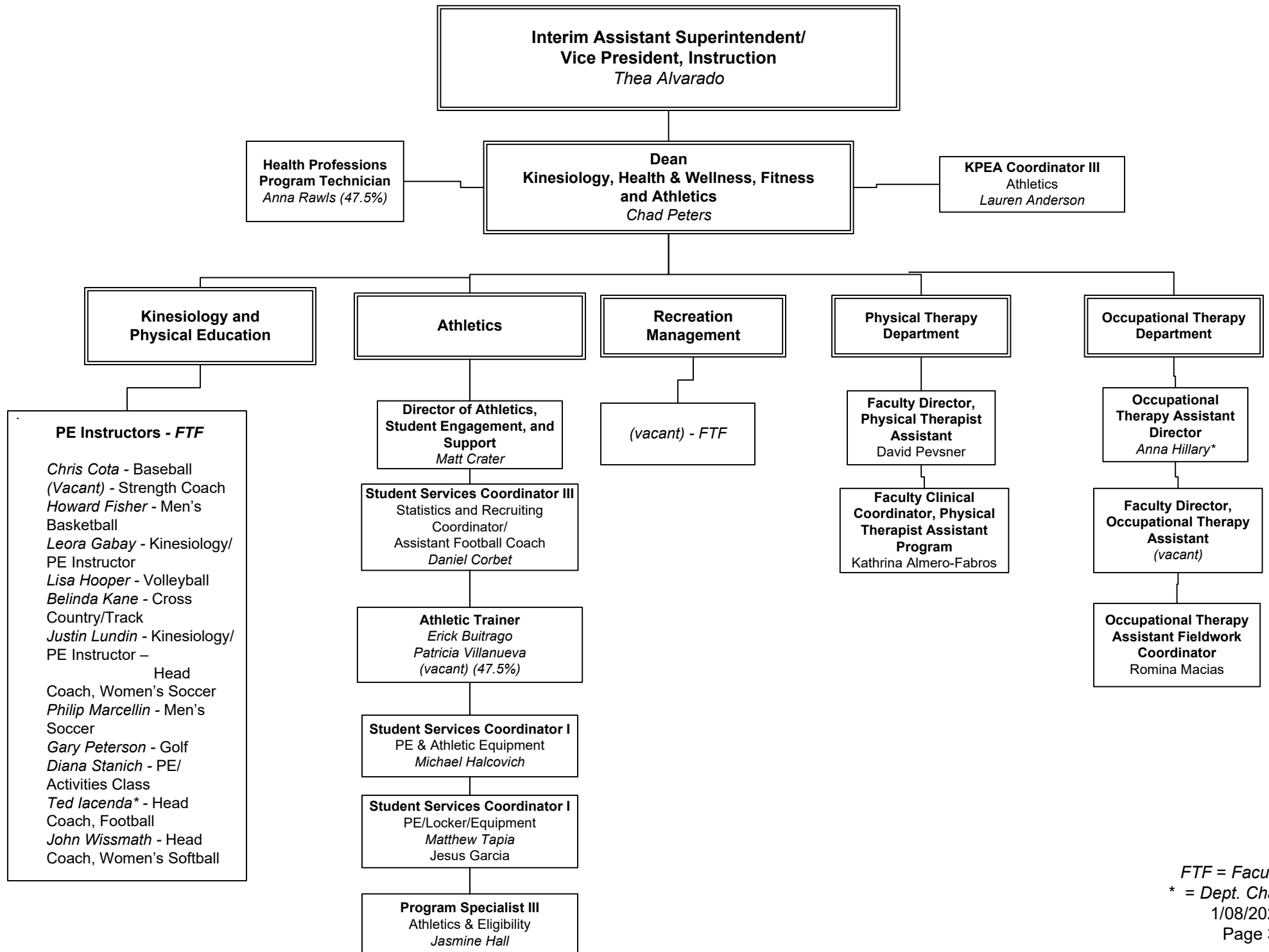
G – Grant Funded

CCC = Canyon Country Campus

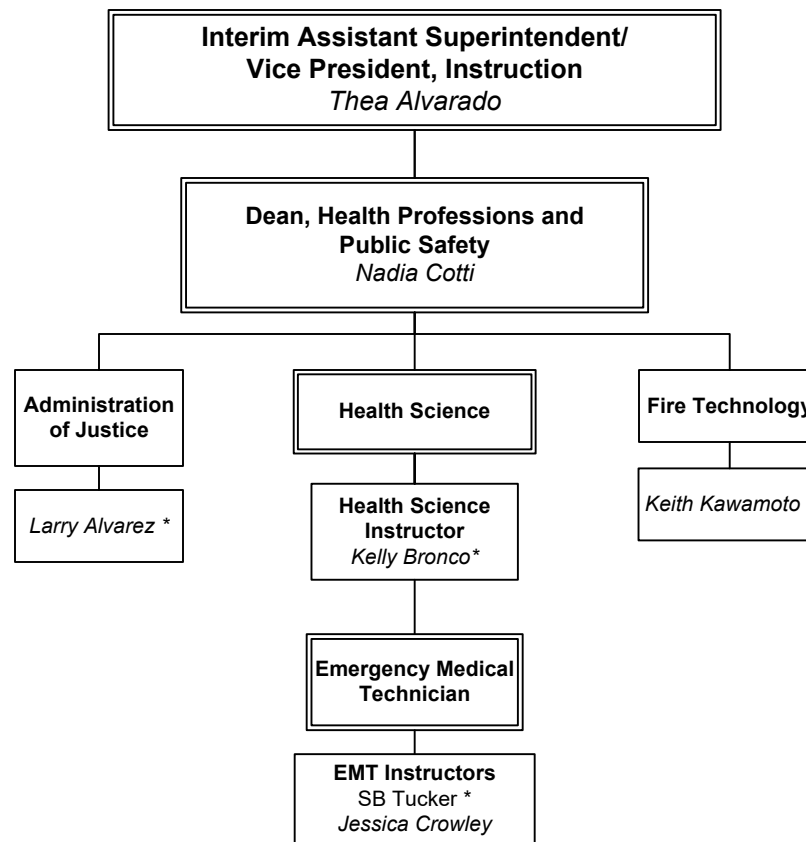
1/08/2026

Page 29

**KINESIOLOGY, HEALTH & WELLNESS,  
FITNESS & ATHLETICS**



SCHOOL OF PUBLIC SAFETY



**SCHOOL OF MATHEMATICS, SCIENCES,  
& ENGINEERING**

**Interim Assistant Superintendent/  
Vice President, Instruction**  
*Thea Alvarado*

**Dean**  
**School of Mathematics, Sciences,  
and Engineering**  
*David Vakil*

**Administrative Assistant III**  
Mathematics, Sciences &  
Engineering  
*Susan Wills*

**Biological and  
Environmental Science  
Department**

**Biology Instructors**

Anna Jane Almeda  
Jeannie Chari  
Kelly Cude\*  
Stephen Flanagan  
Alexandra Mokhnatkina  
Christopher "Shane" Ramey  
Ricardo Rosales  
Erica Seubert  
Daniel Thomas  
Dilek Sanver-Wang  
Loni Hands  
Erica Mullins

**Senior Instructional Lab Tech.**

(Biological/Physical/Sciences)  
*Sarah Boyle- CCC*  
*Jenna King*  
*Juliana Lima*  
*Angela Vela – CCC*  
*Norma Espinoza*  
*LaTisha Washington – CCC*

**Instructional Lab Technicians**

(Biological Sciences)  
*Rachel LaBrum*  
*Brenda Thompson (72.5%)*  
*Shane Yerga-Woolwine (47.5%) - CCC*

**Laboratory Operations  
Lead (Biological  
Sciences)**

*Barbara Andrade*

**Mathematics  
Department**

**Mathematics Instructors**

*Kelly Aceves*  
*Ruzanna Baytaryan*  
*Marlene Demerjian*  
*Collette Gibson*  
*James Gilmore*  
*Jeremy Goodman*  
*Anzhela Grigoryan\**  
*Brandon Hilst*  
*Mike Hubbard*  
*Violeta Kovacev-Nikolic*  
*Kathy Kubo*  
*Luong Le*  
*Saburo Matsumoto*  
*Ana Palmer*  
*Michael Sherry*  
*Ambika Silva*  
*Dustin Silva*  
*Matt Teachout*

**Chemistry  
Department**

**Chemistry  
Instructors**

*Rana Akiel*  
*Hind Ali*  
*Consuelo Beecher*  
*Thomas Gisell*  
*Isaac Koh*  
*Alejandro Lichtscheidl*  
*Heidi McMahon*  
*Miles Silverman*  
*Gretchen Stanton\**  
*Tara Williams*

**Laboratory Operations  
Lead (Chemistry)**

*Michelle Marcellin*

**Laboratory Technical  
Coordinator (Chemistry)**

*Edwin Abrenica*

**Senior Instructional Lab  
Tech.**

(Chemistry)  
*Daniela Moreno- CCC*

**Instructional Lab Tech.**

(Chemistry)  
*Amanda Baur (72.5%)*  
*Shaina Grill (72.5%)- CCC*

**Computer Science  
Department**

**Computer Science  
Instructors**

*Christopher Ferguson*  
*Urvashi Juneja*  
*Benjamin Riveira III\**

**Engineering  
Department**

**Engineering  
Instructor**

*Patricia Foley\**

**MESA Program  
Director**

*Amy Foote*

**MESA Counselor  
(72.5%)**

*Jesus Vera*

**Program Coordinator II**  
Science, Technology,  
Engineering and  
Mathematics (STEM)

*Jennifer Barrera*

**Physics  
Department**

**Physics  
Instructor**

*Nathan Bell*  
*David Michaels\**

**Instructional Lab Tech.**

(Physics/Engineering/  
Maker Space)  
*Menoa Yousefi*

**Earth and Space  
Sciences  
Department**

**Astronomy  
Instructor**

*Michaela Blain*

**Geology/  
Geography  
Instructor**

*Jason Burgdorfer*

**Physical Science  
Instructor**

*Teresa Ciardi*

**Geology  
Instructor**

*Carly Gott*

**Geography  
Instructors**

*Jeremy Patrich\**

**Physics/Astronomy  
Instructor**

*David Michaels\**

**Instructional Lab  
Technicians  
(Earth and Space Sciences)**

**Instructional  
Lab Tech.**

Earth and Space  
Sciences  
*Renee Wolf*

**Instructional  
Lab Tech.**

Physics and Earth  
and Space  
Sciences (CCC)  
*Vacant (47.5%)*

FTF = Faculty

\* = Dept. Chair

G – Grant Funded

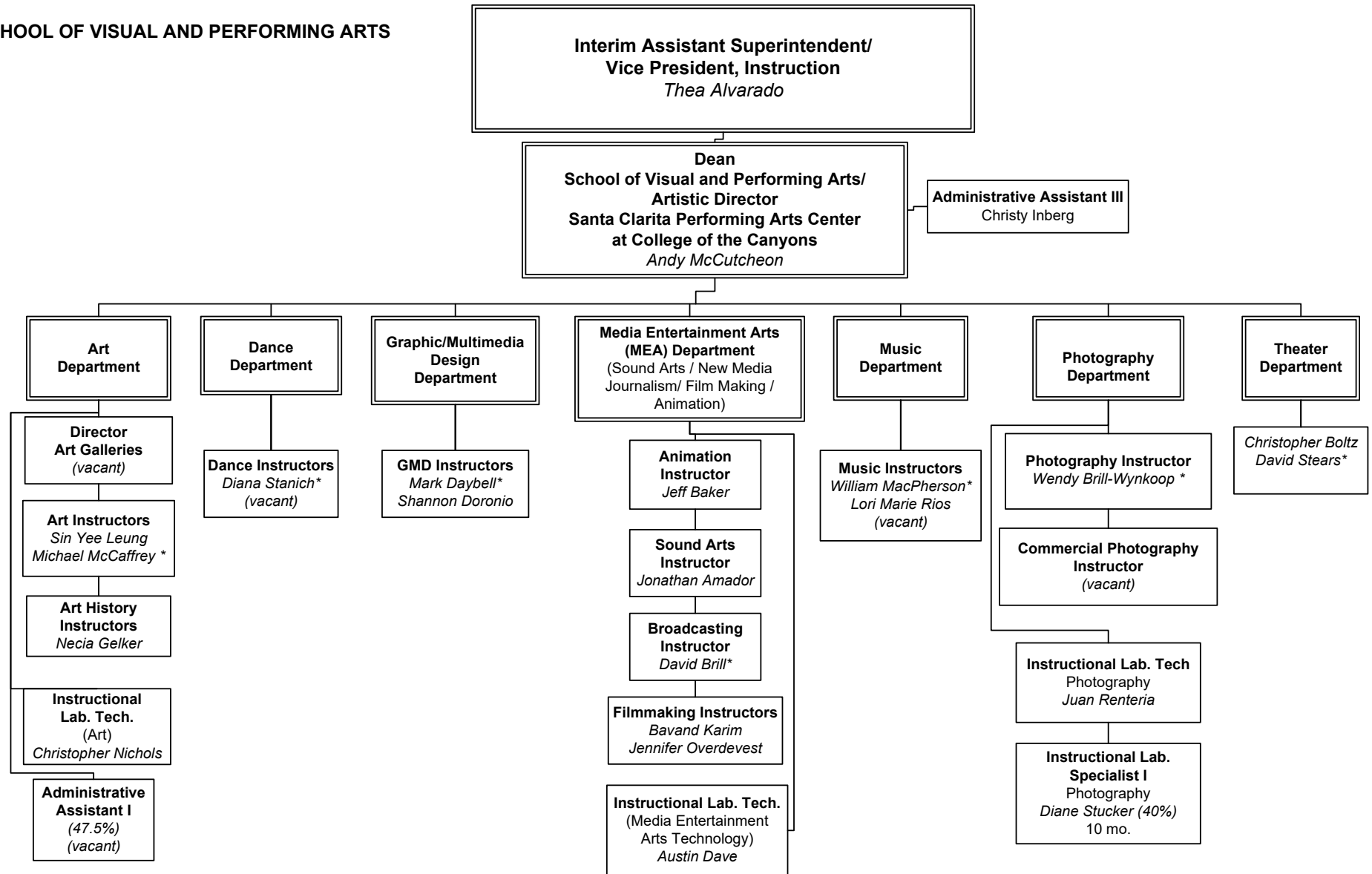
CCC = Canyon Country Campus

1/8/2026

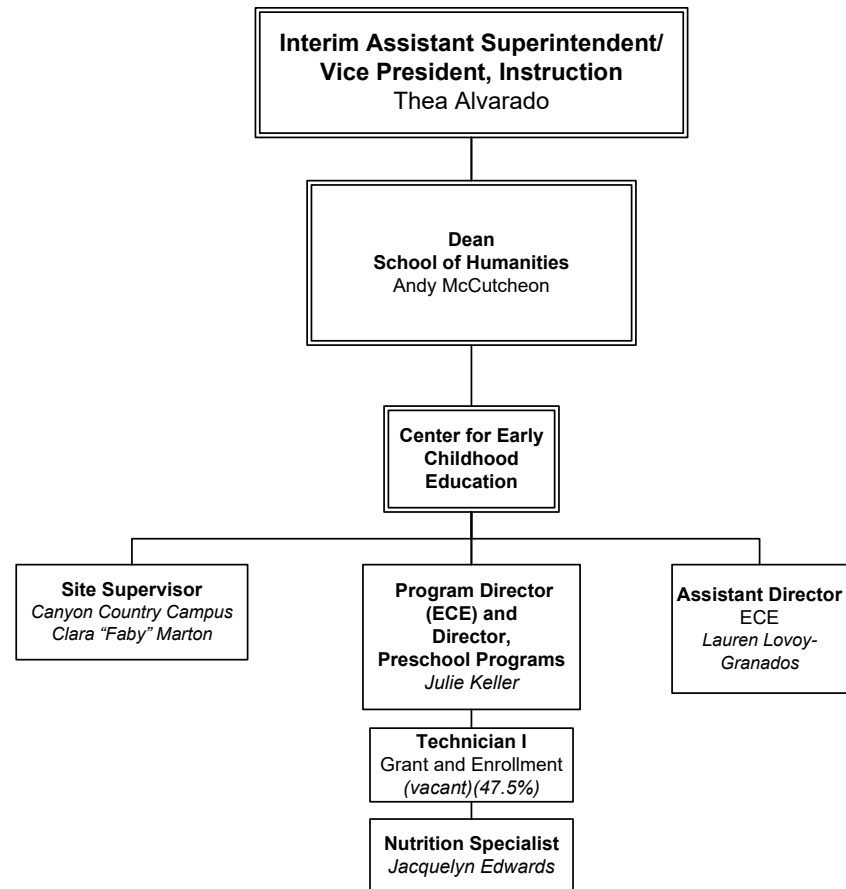
Page 32



# SCHOOL OF VISUAL AND PERFORMING ARTS



CENTER FOR EARLY CHILDHOOD EDUCATION



## COLLEGE OF THE CANYONS FOUNDATION ORGANIZATION

