

ADMINISTRATIVE ORGANIZATIONAL CHART

Santa Clarita Community College District
College of the Canyons

BOARD OF TRUSTEES

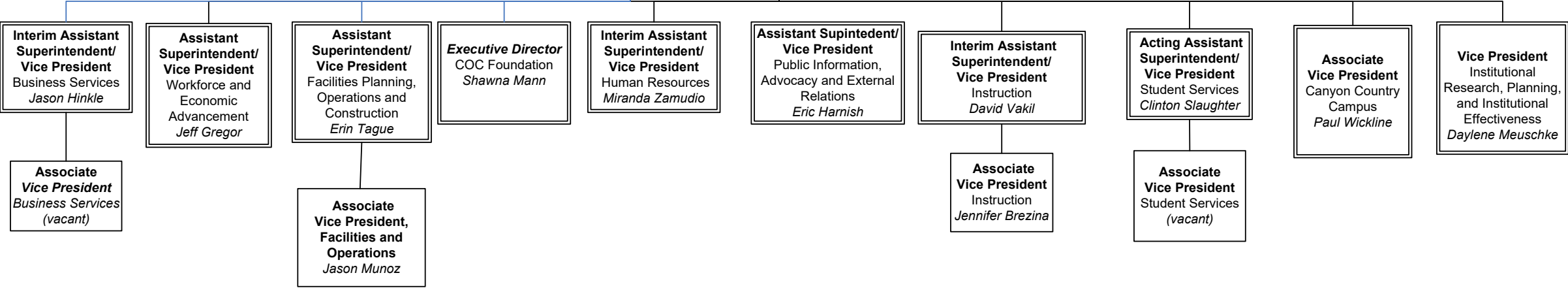
Sharlene Johnson, PresidentFred Arnold, Vice PresidentEdel Alonso, MemberCarlos Guerrero, MemberDarlene Trevino, Secretary

INTERIM SUPERINTENDENT/
PRESIDENT

Jasmine Ruys

Chief of Staff

Kristina Hancock

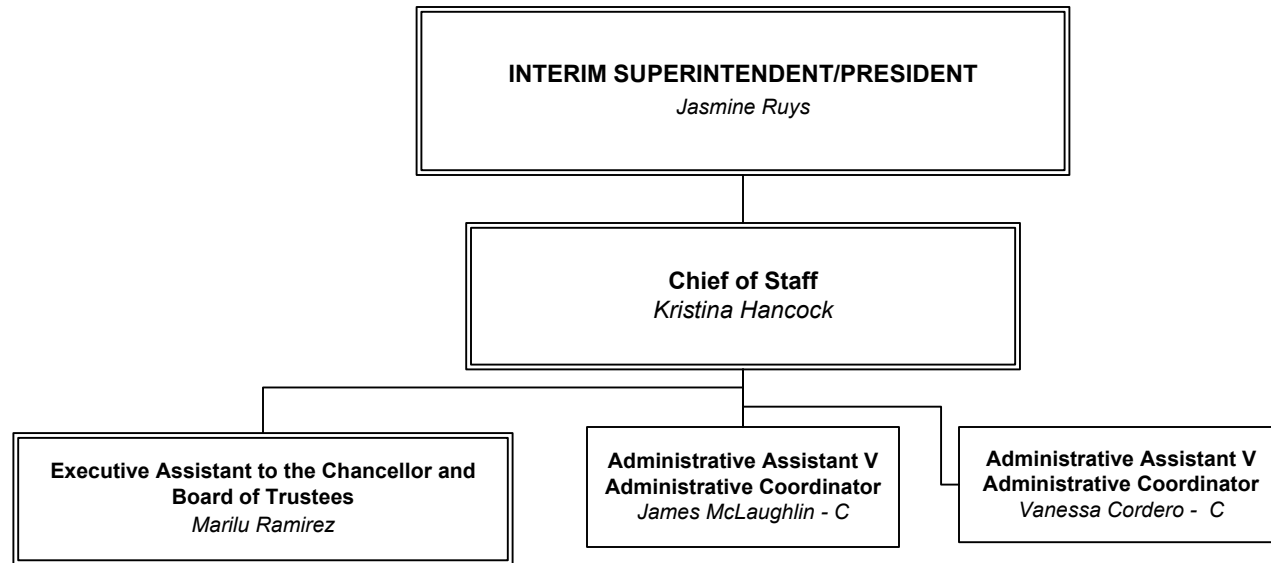


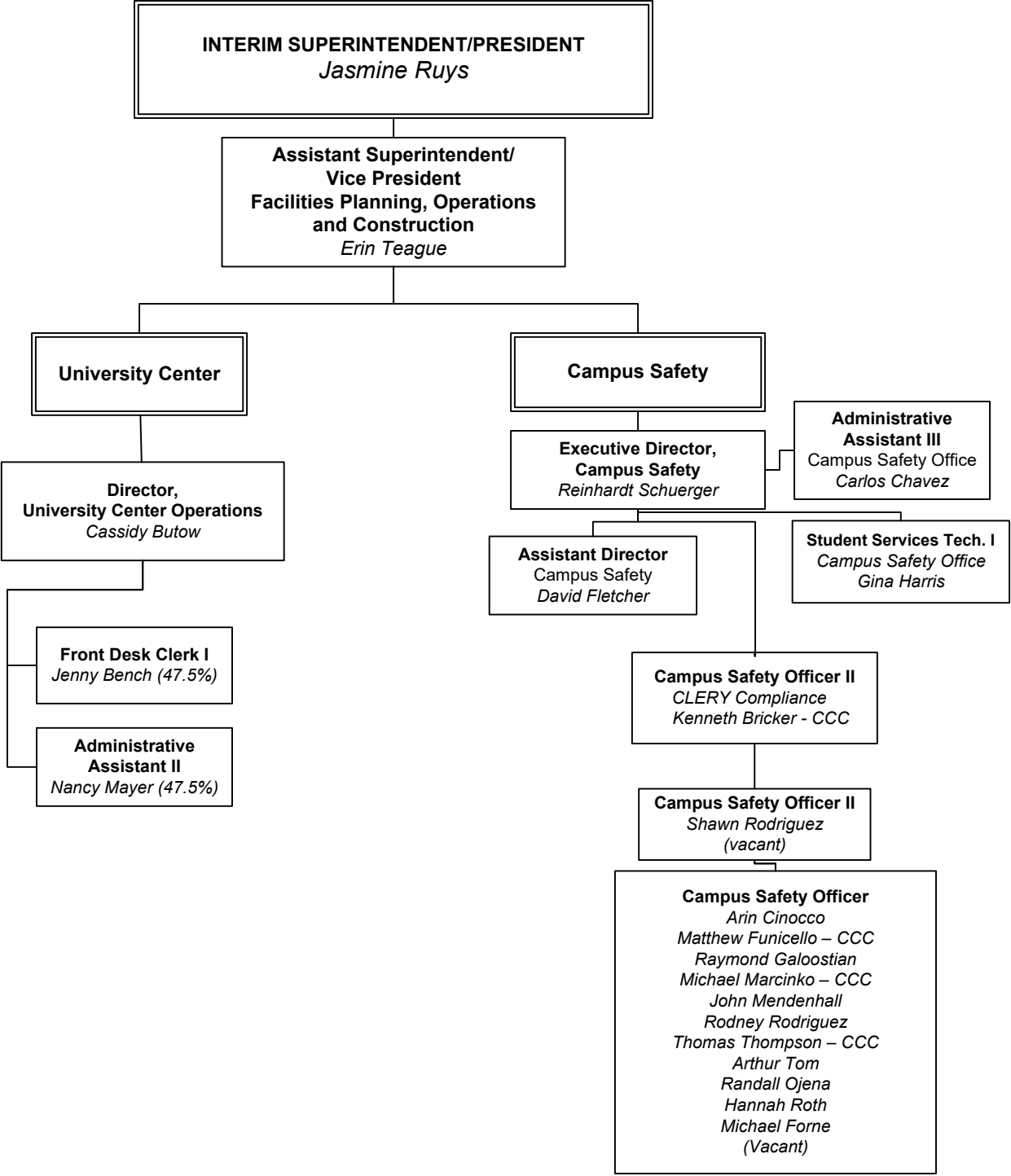
**Santa Clarita Community College District
College of the Canyons Organization Chart
Table of Contents**

Department

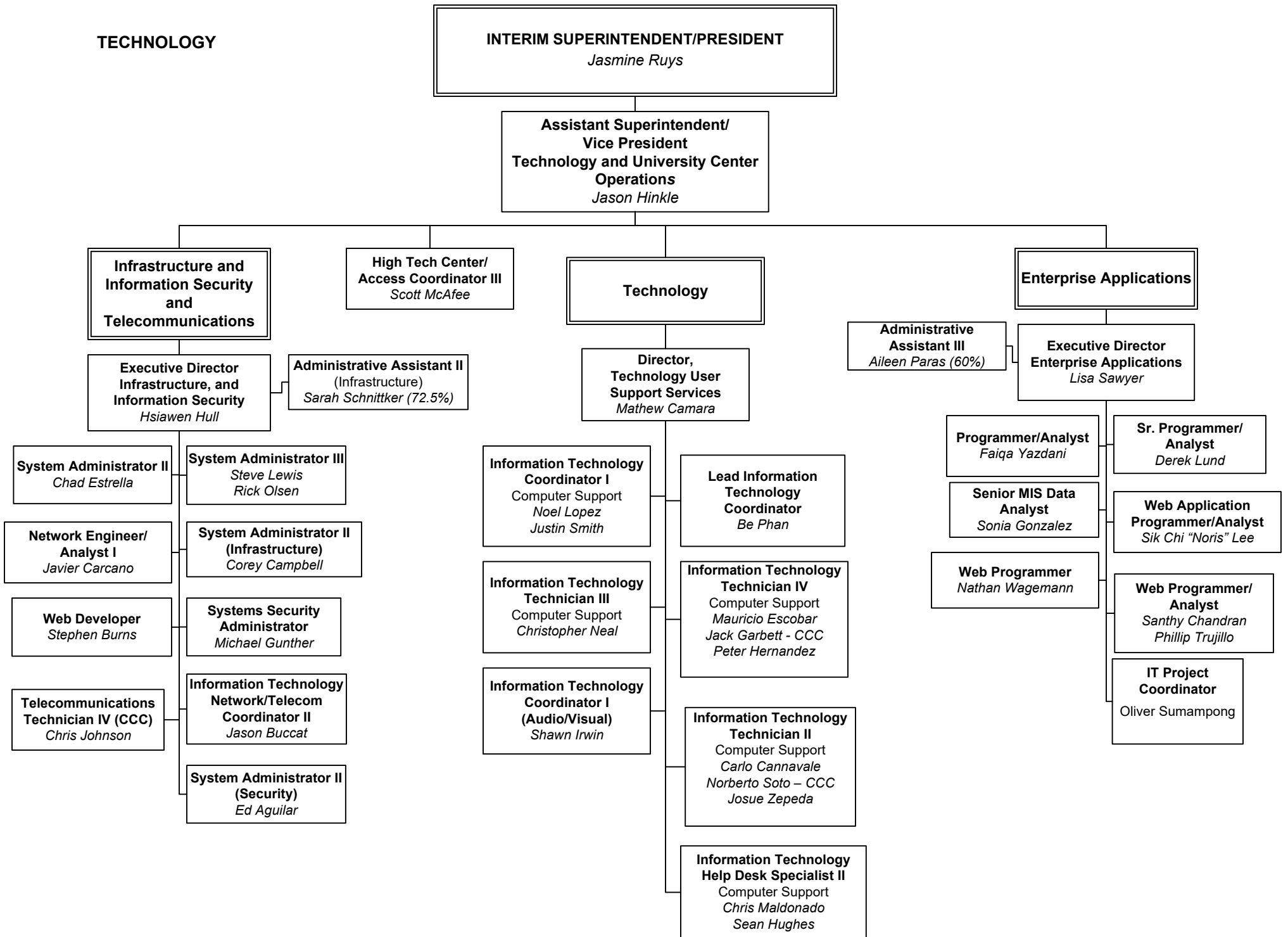
- President's Office – Pg. 3
- Campus Safety & University Center – Pg. 4
- Technology and CSS – Pg. 5
- Human Resources – Pg. 6
- Business Services – Pg. 7
- Public Information, Advocacy, External Relations & District Communications – Pg. 8
- Facilities Planning, Operations, and Construction – Pg. 9
- Economic and Workforce Advancement – Pg. 10
- Canyon Country Campus, Infrastructure and Grants – Pg. 11
- Canyon Country Campus, Student Services and Instruction – Pg. 12
- Institutional Research, Planning, and Institutional Effectiveness, Intercultural Center, and CCC Initiatives – Pg. 13
- Student Services – Pg. 14-20
 - Counseling and Enrollment Services - Pg. 16
 - Admission & Records and Online Services Pg. 17
 - Academic Accommodations, Extended Opportunity & Services EOPS/CARE/CalWORKs and Rise, Student Health and Wellness Center – Pg. 18
 - Campus Life and Student Engagement, Financial Aid and Scholarships, Student Resources and Basic Needs, International Affairs and Global engagement, Student Business Office – Pg. 19
 - CWEE Volunteers – Pg. 20
- Instruction – Pg. 21-34
 - Office of Instruction – Pg. 20
 - Education Technology, Learning Resources, and Online Education – Pg. 21
 - Schools of Instruction – Pg. 23
 - School of Applied Technologies – 24
 - School of Business – Pg. 25
 - School of Humanities – Pg. 26
 - School of Social and Behavioral Sciences – Pg. 27
 - School of Kinesiology, Health & Wellness, Fitness & Athletics – Pg. 28
 - School of Health Professions – Pg. 29
 - School of Public Safety – 30
 - School of Mathematics, Sciences, & Engineering – Pg. 31
 - School of Visual and Performing Arts – Pg. 32
 - Center for Early Childhood Education – Pg. 33
- College of the Canyons Foundation Organization – Pg. 35

PRESIDENT'S OFFICE

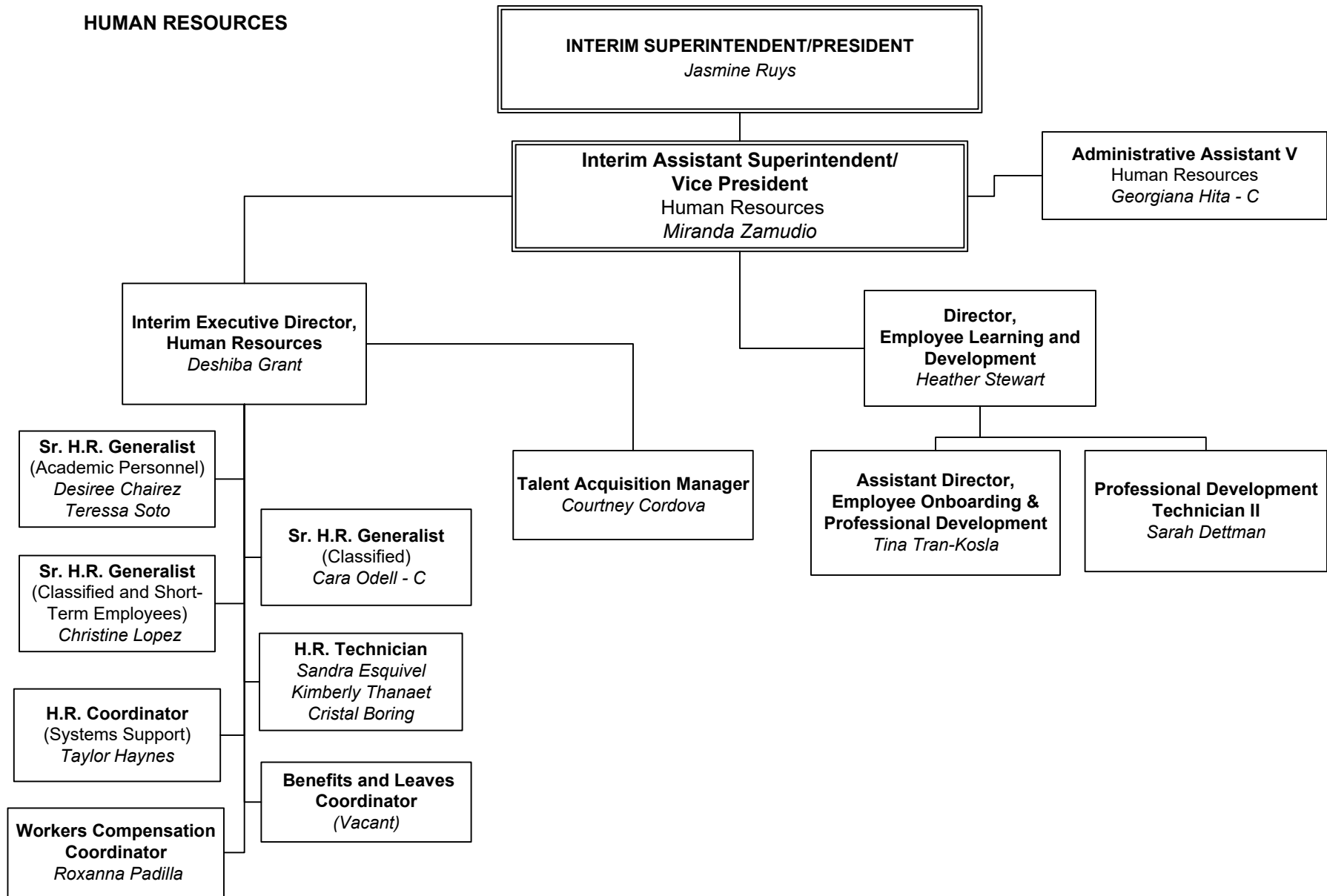




TECHNOLOGY



HUMAN RESOURCES



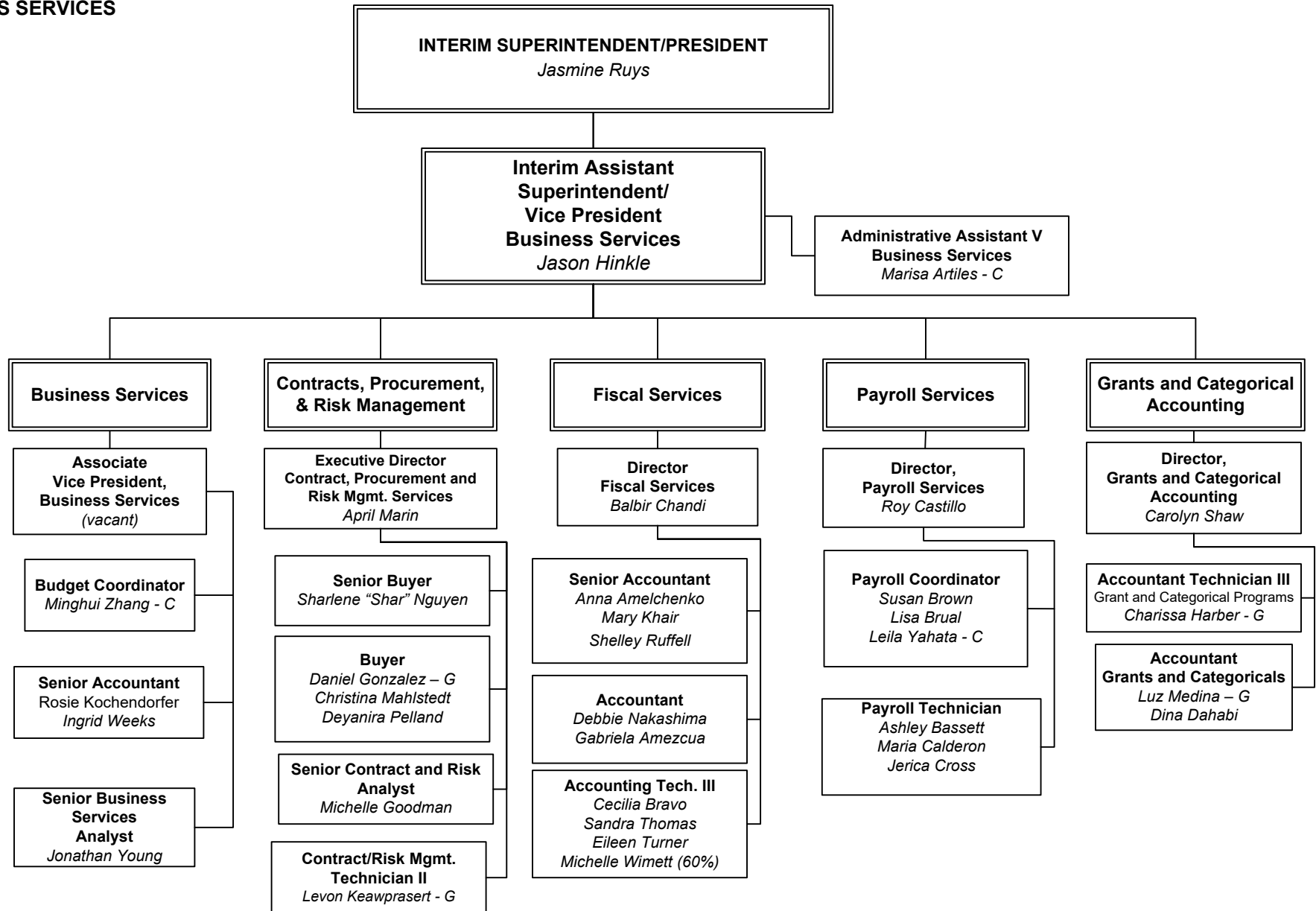
C = Confidential Employee

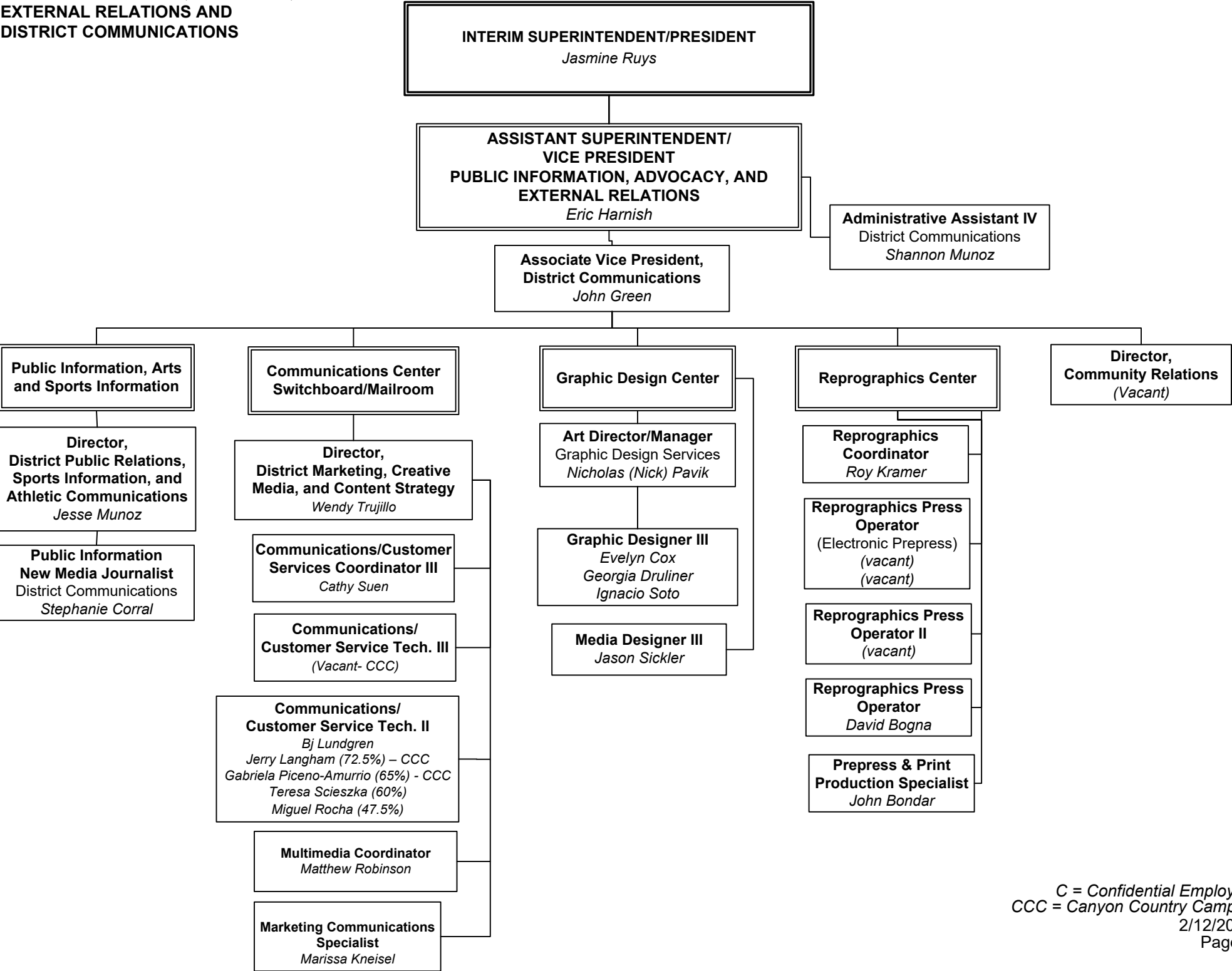
G = Grant Funded

2/12/2026

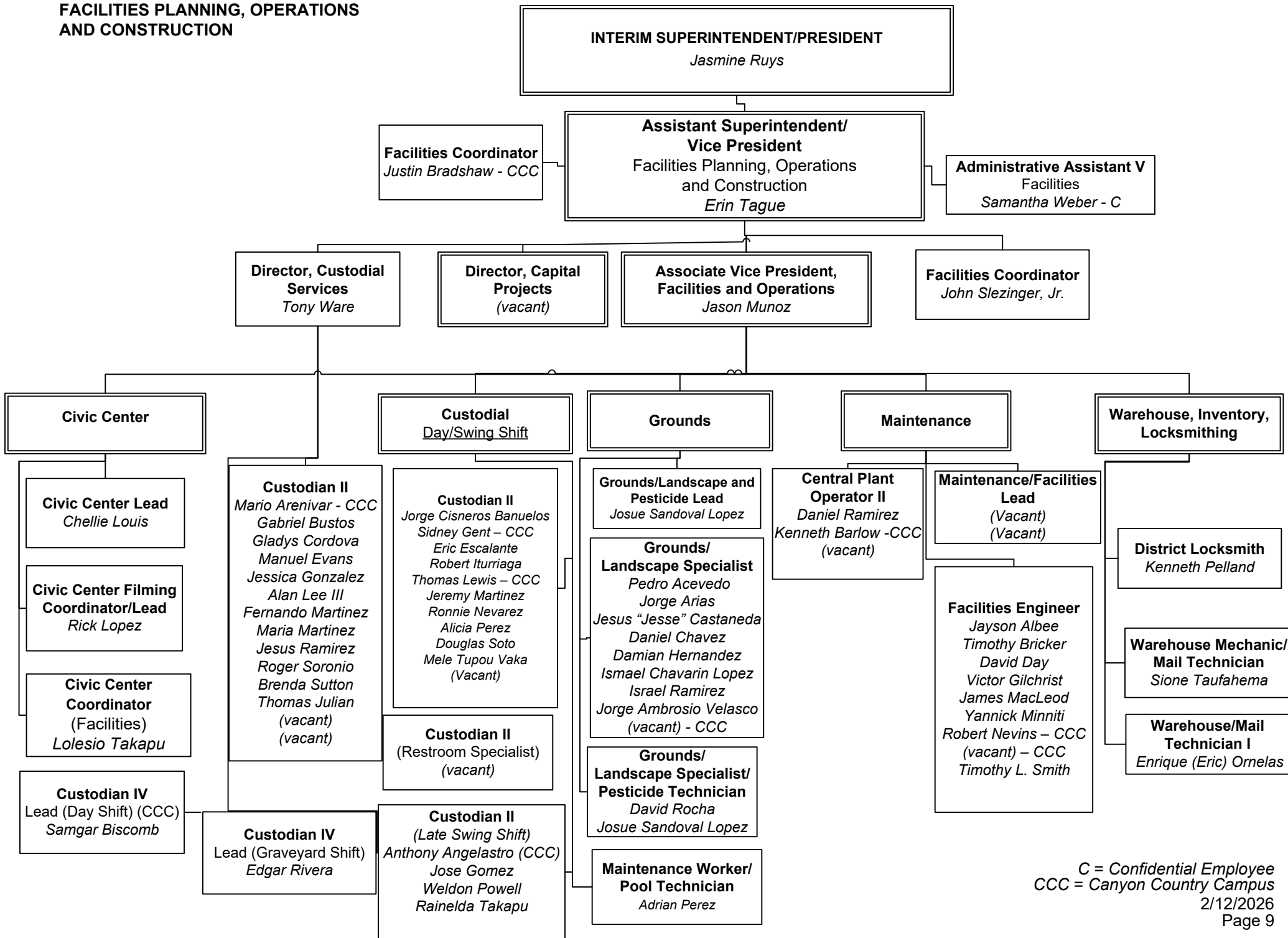
Page 6

BUSINESS SERVICES

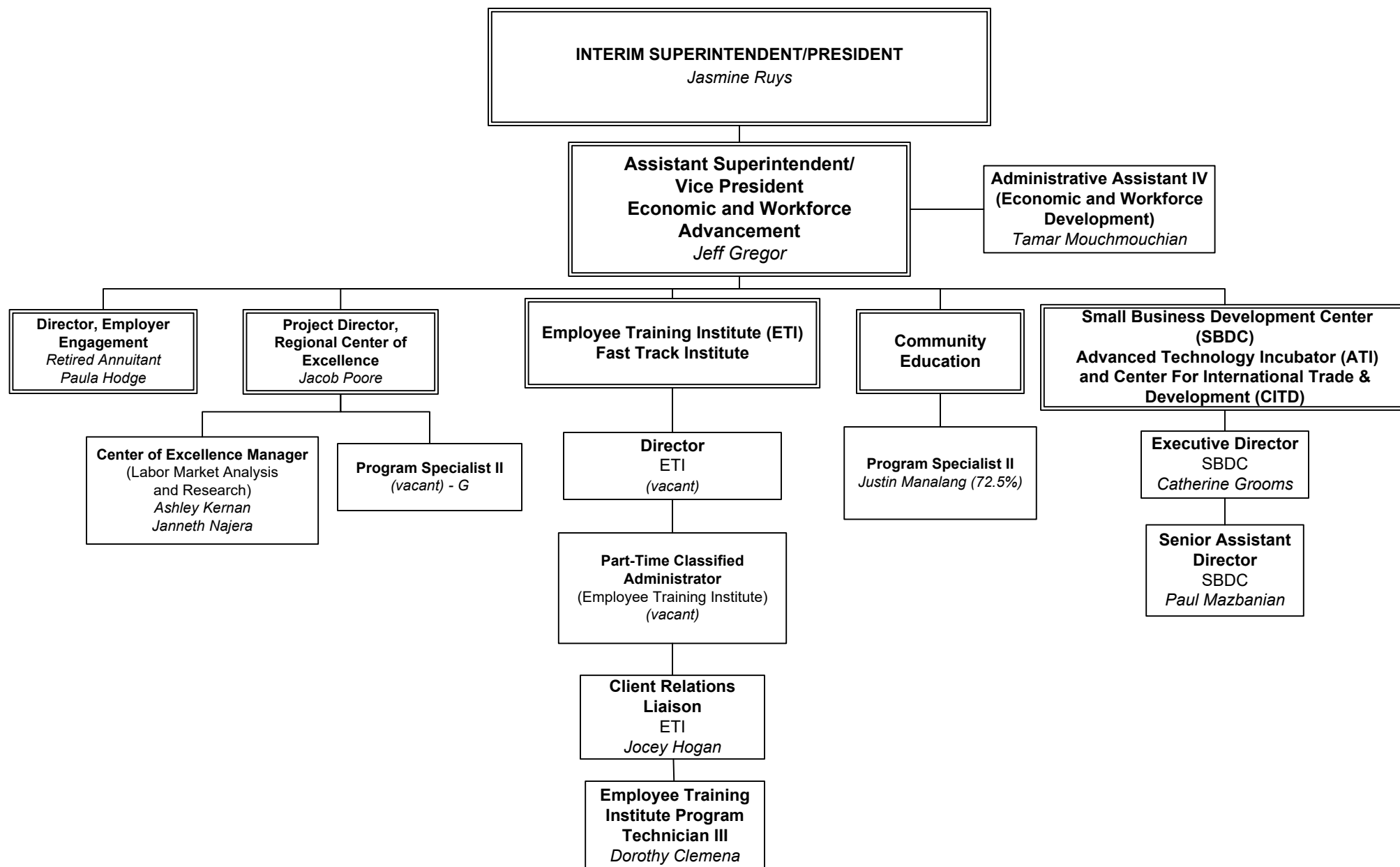




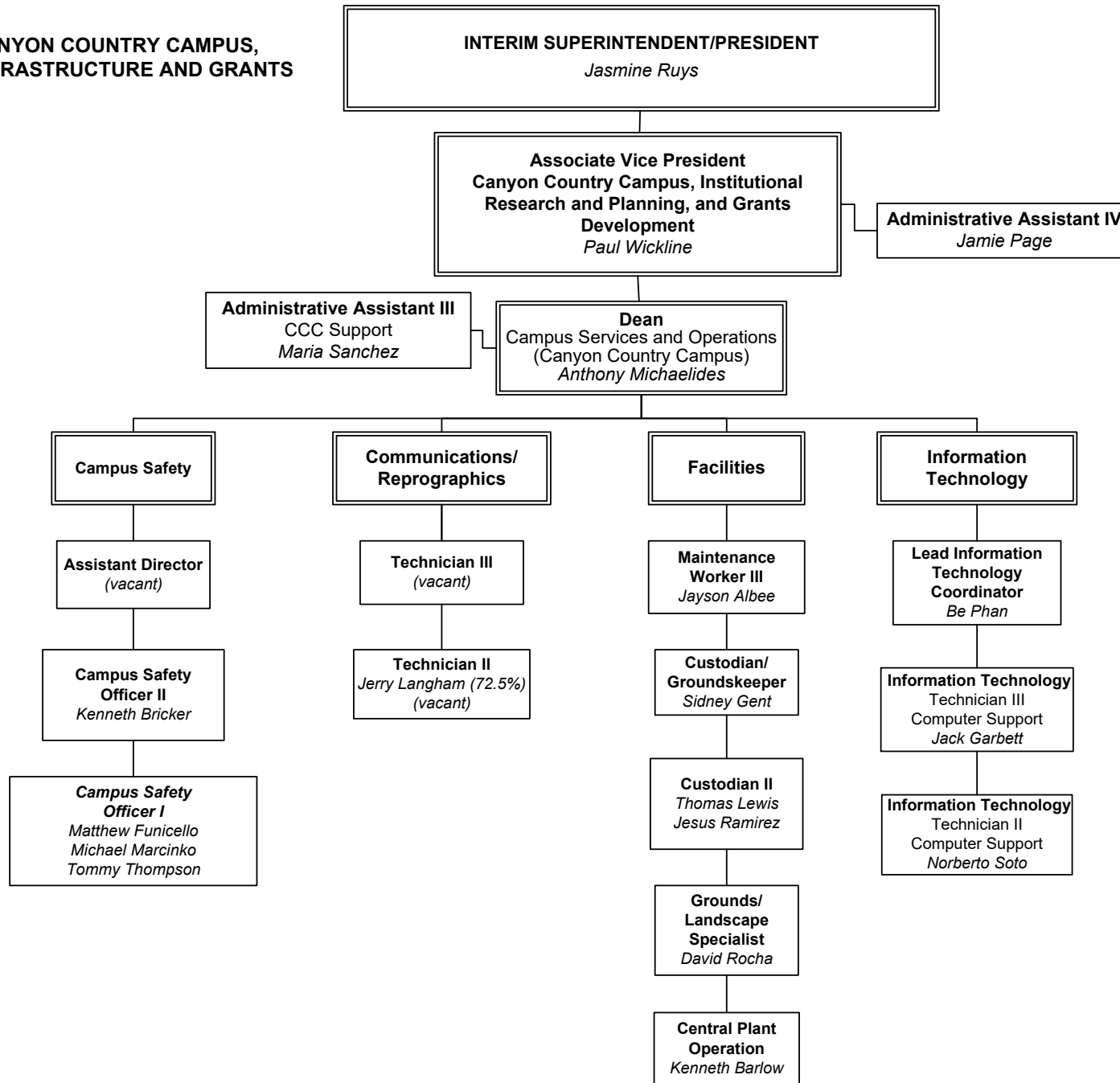
**FACILITIES PLANNING, OPERATIONS
AND CONSTRUCTION**



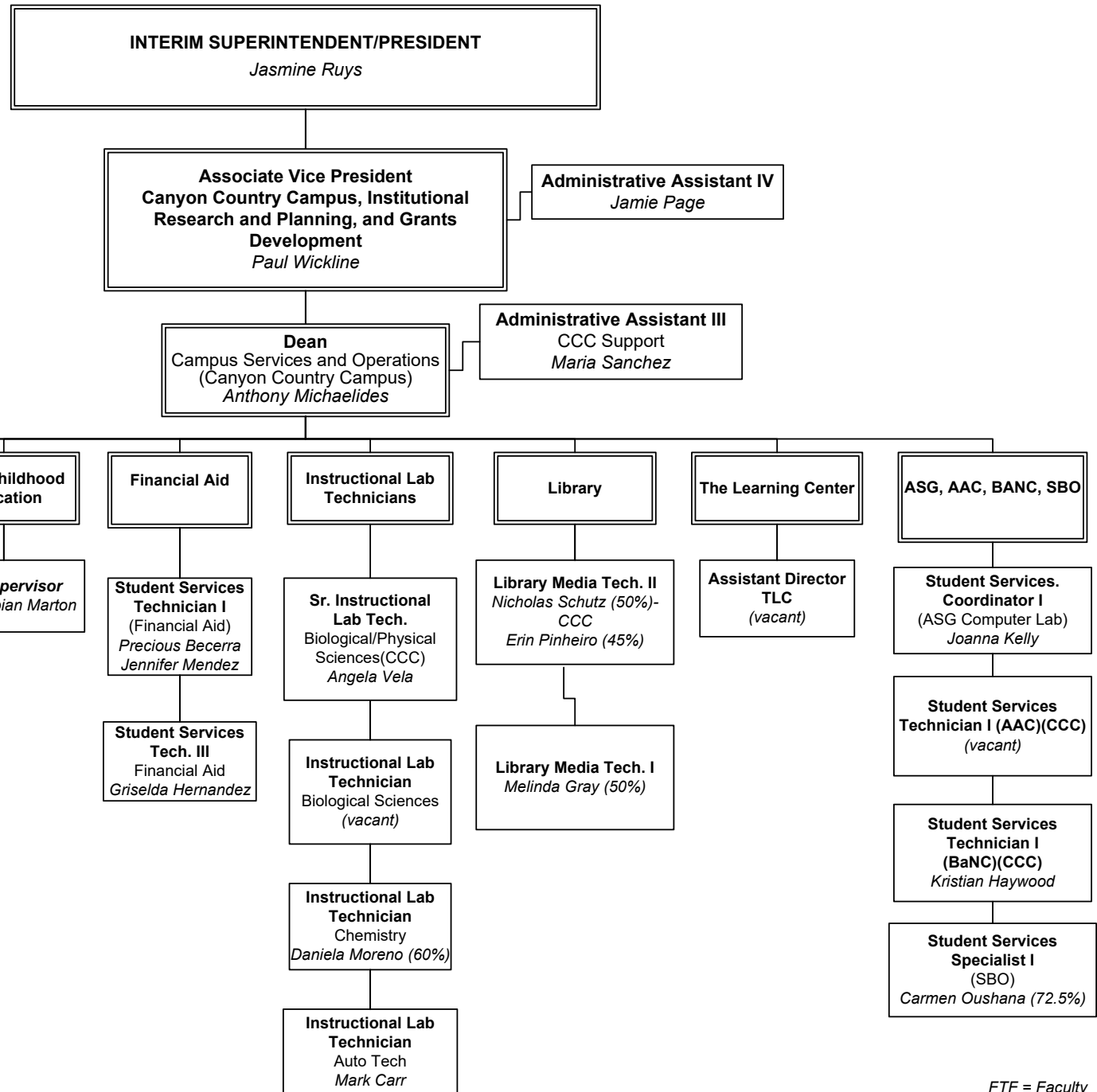
ECONOMIC & WORKFORCE ADVANCEMENT



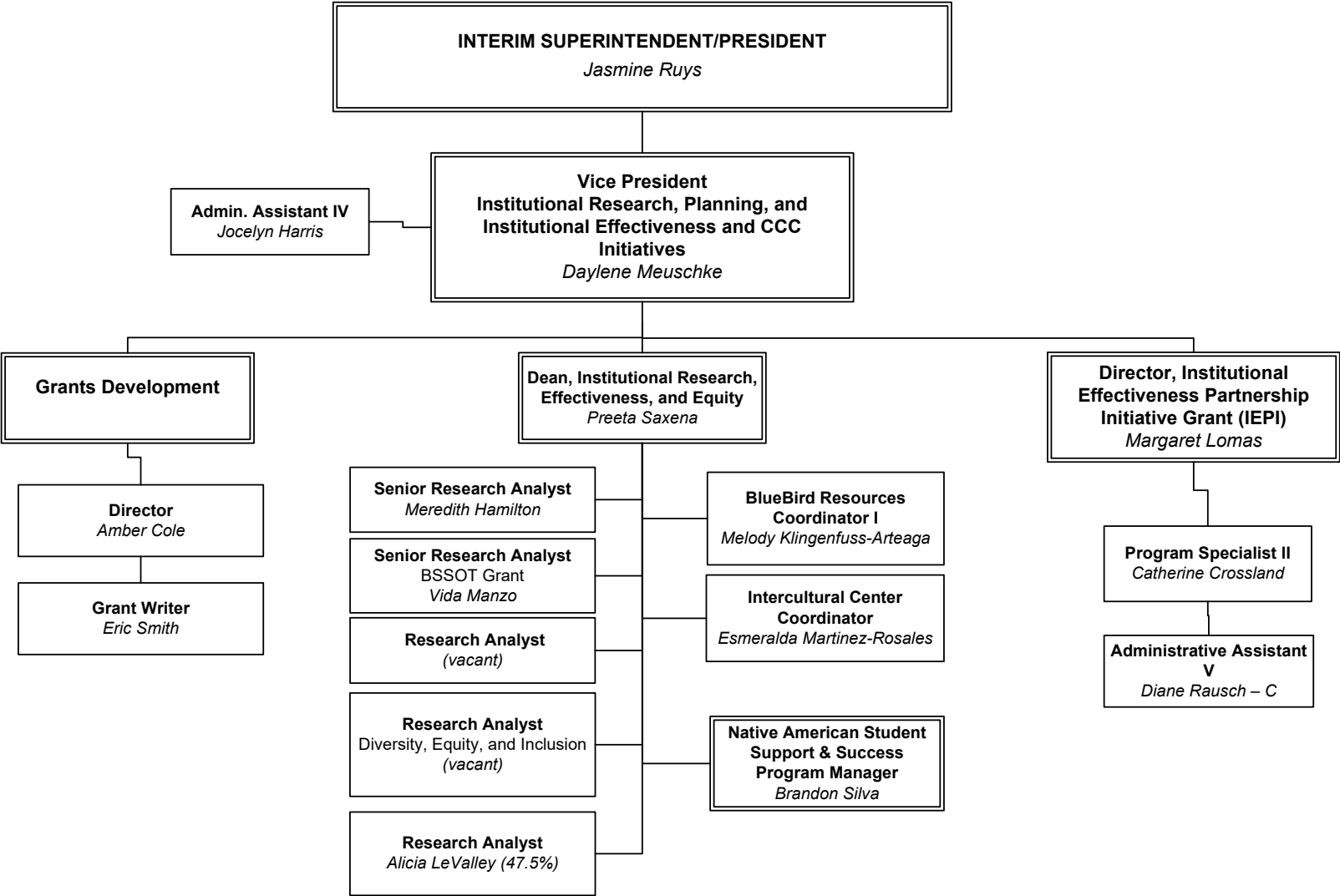
**CANYON COUNTRY CAMPUS,
INFRASTRUCTURE AND GRANTS**



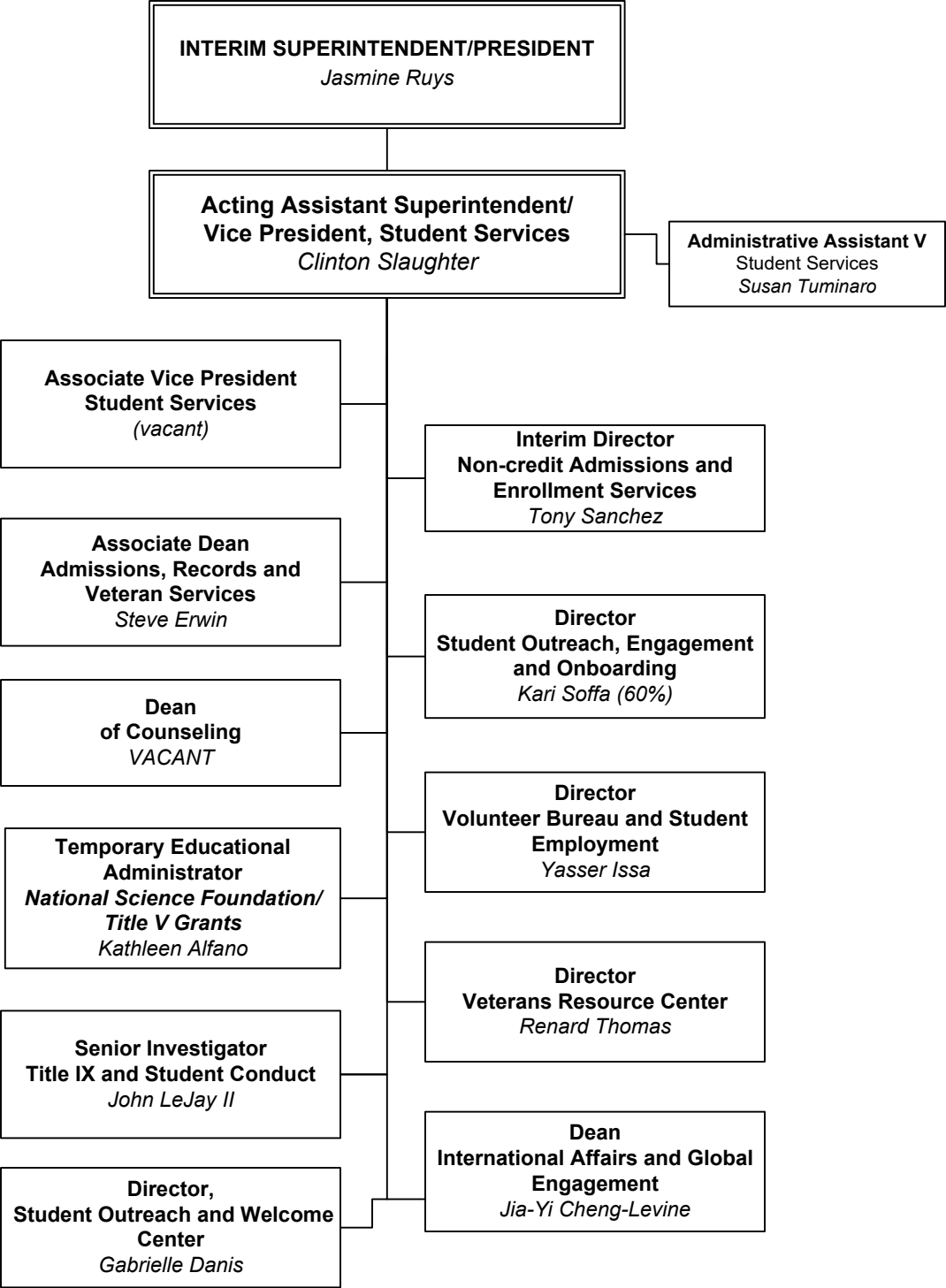
**CANYON COUNTRY CAMPUS,
INSTRUCTION AND STUDENT SERVICES**



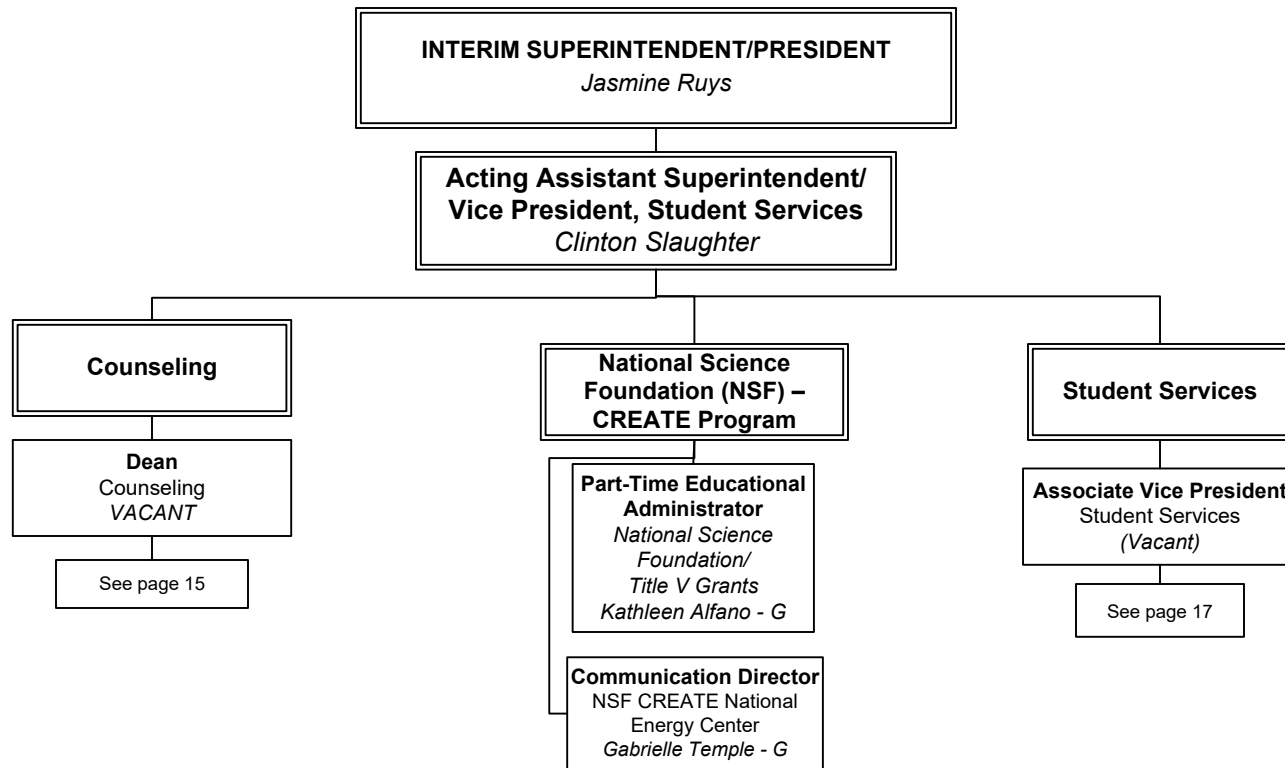
INSTITUTIONAL RESEARCH
PLANNING, AND INSTITUTIONAL EFFECTIVENESS,
INTERCULTURAL CENTER
AND CCC INITIATIVES



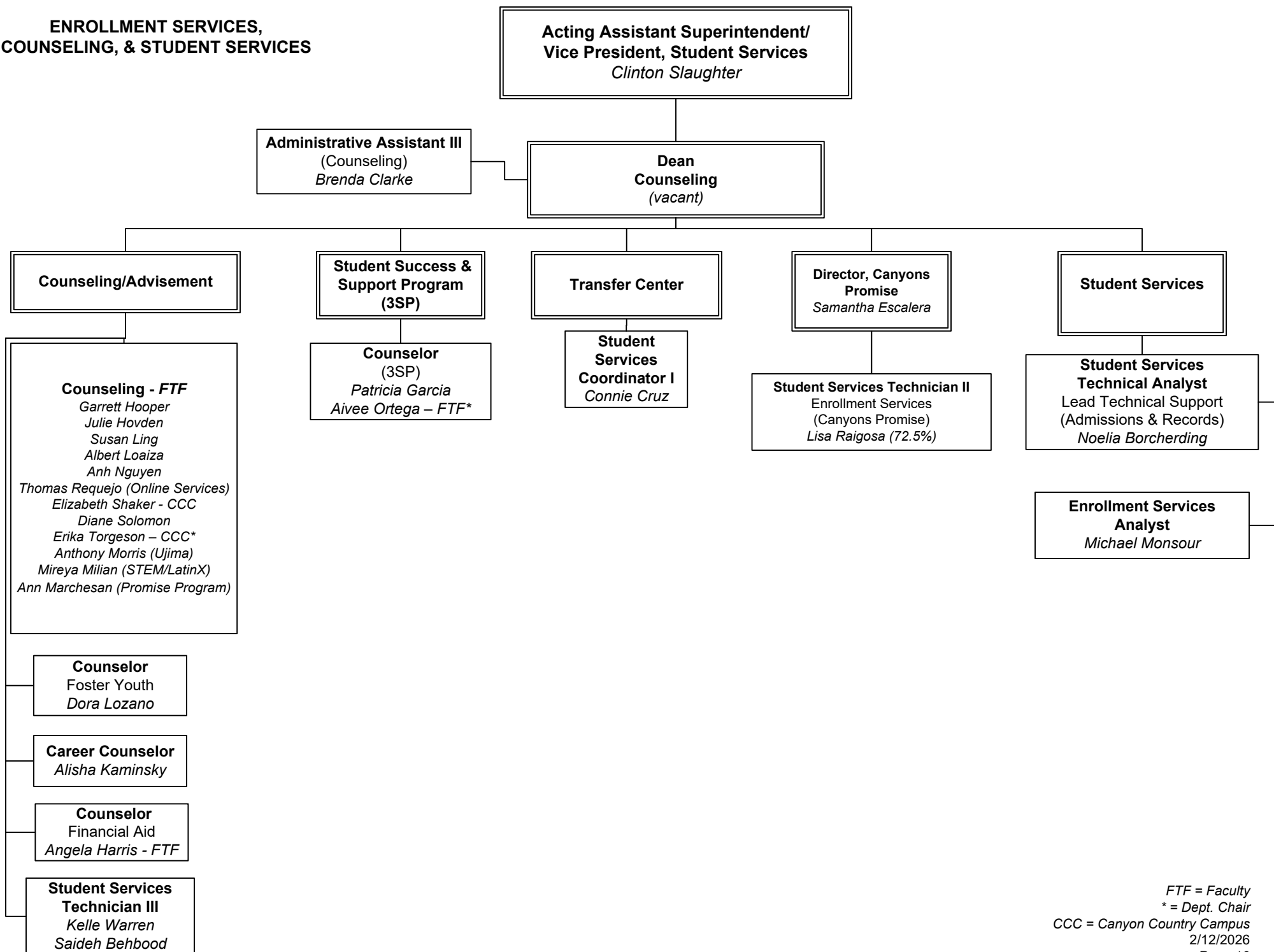
STUDENT SERVICES



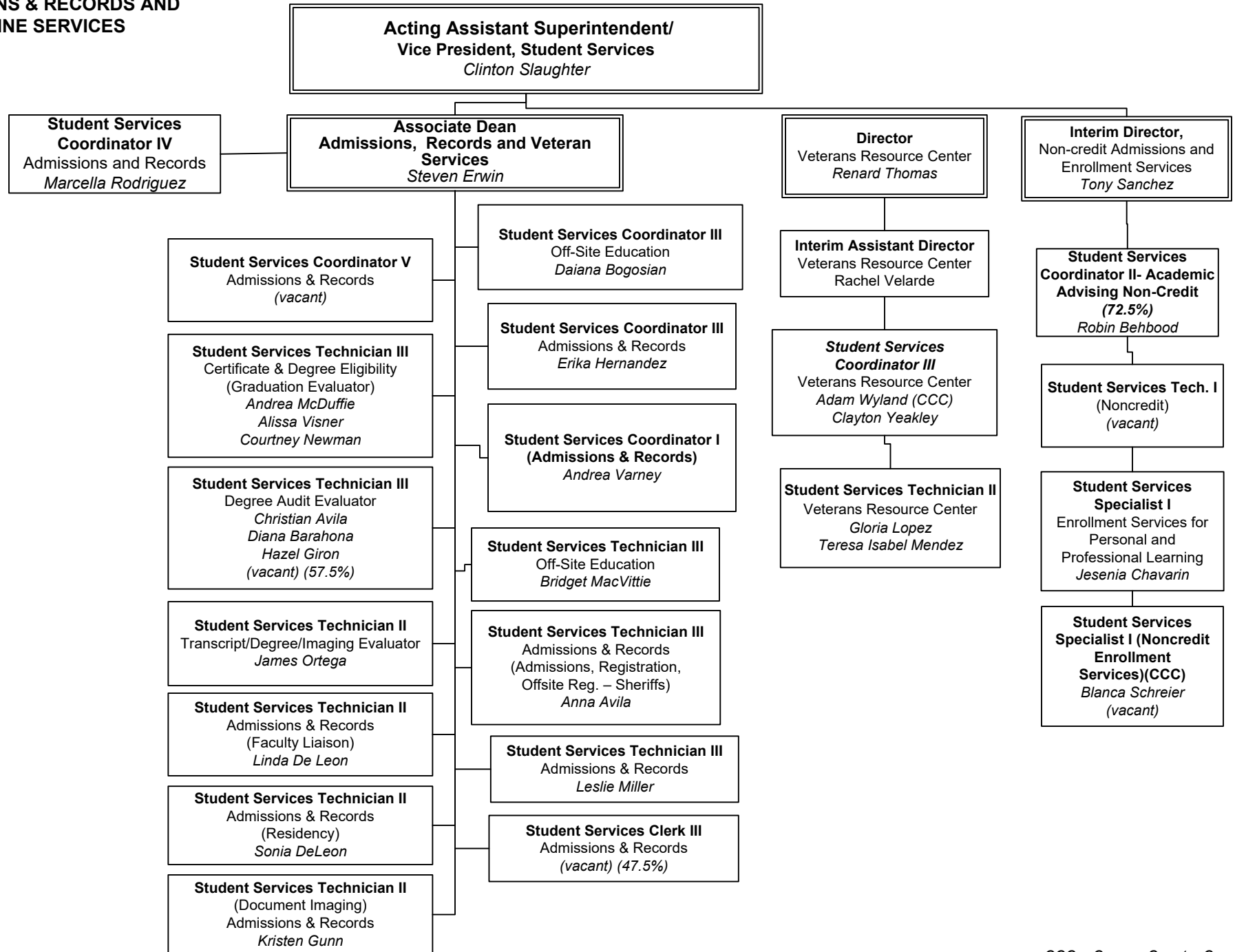
STUDENT SERVICES



**ENROLLMENT SERVICES,
COUNSELING, & STUDENT SERVICES**



**ADMISSIONS & RECORDS AND
ONLINE SERVICES**

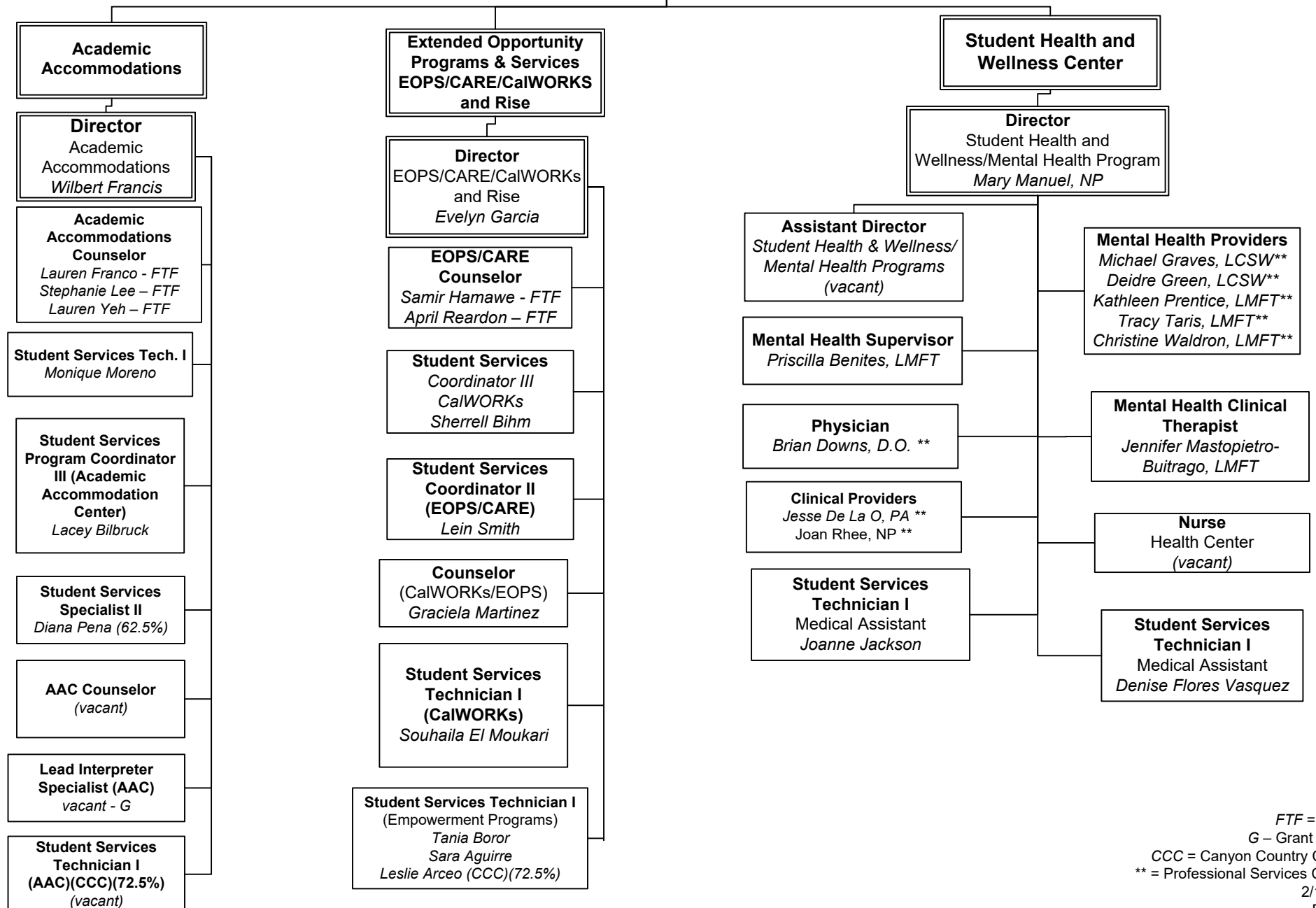


STUDENT SERVICES

**Acting Assistant Superintendent/
Vice President, Student Services**
Clinton Slaughter

**Associate Vice President
Student Services**
(Vacant)

Administrative Assistant IV
(vacant)

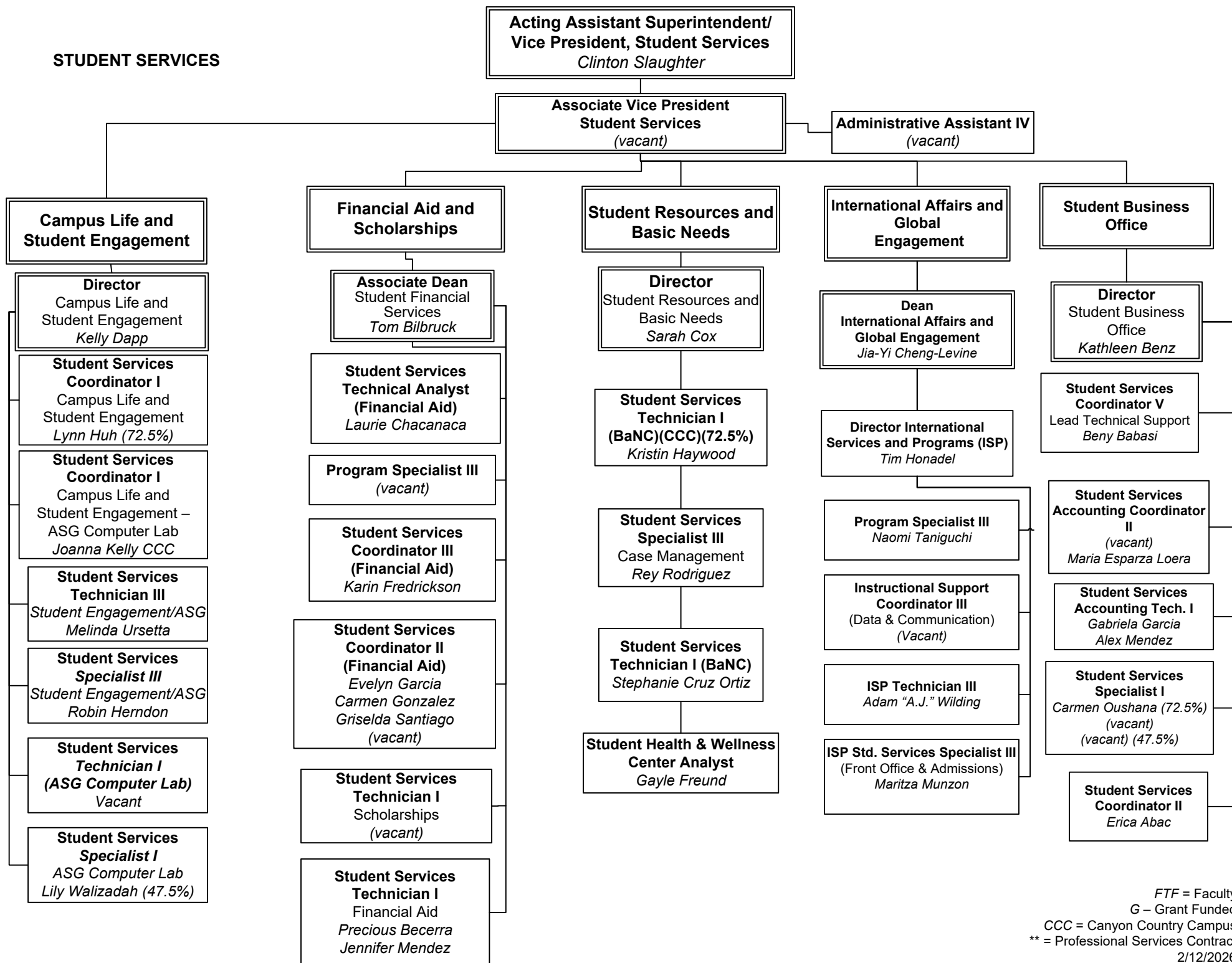


FTF = Faculty
G – Grant Funded
CCC = Canyon Country Campus
** = Professional Services Contract

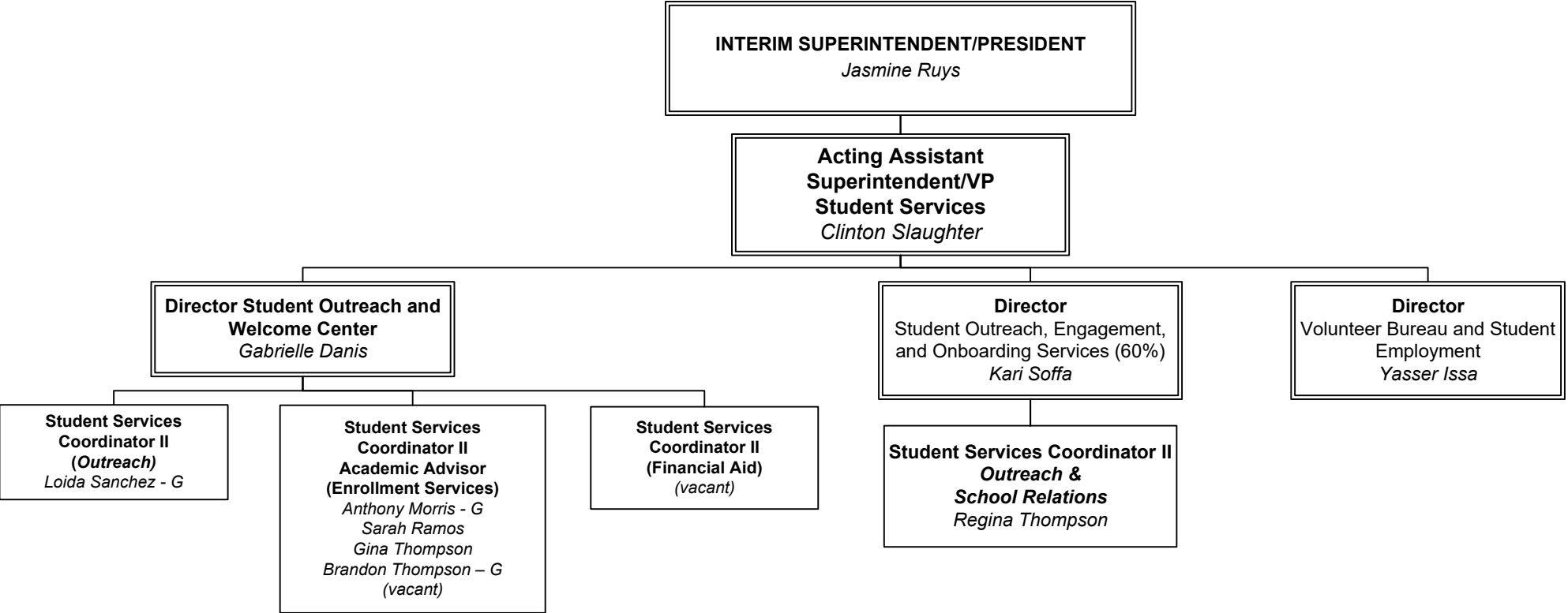
2/12/2026

Page 18

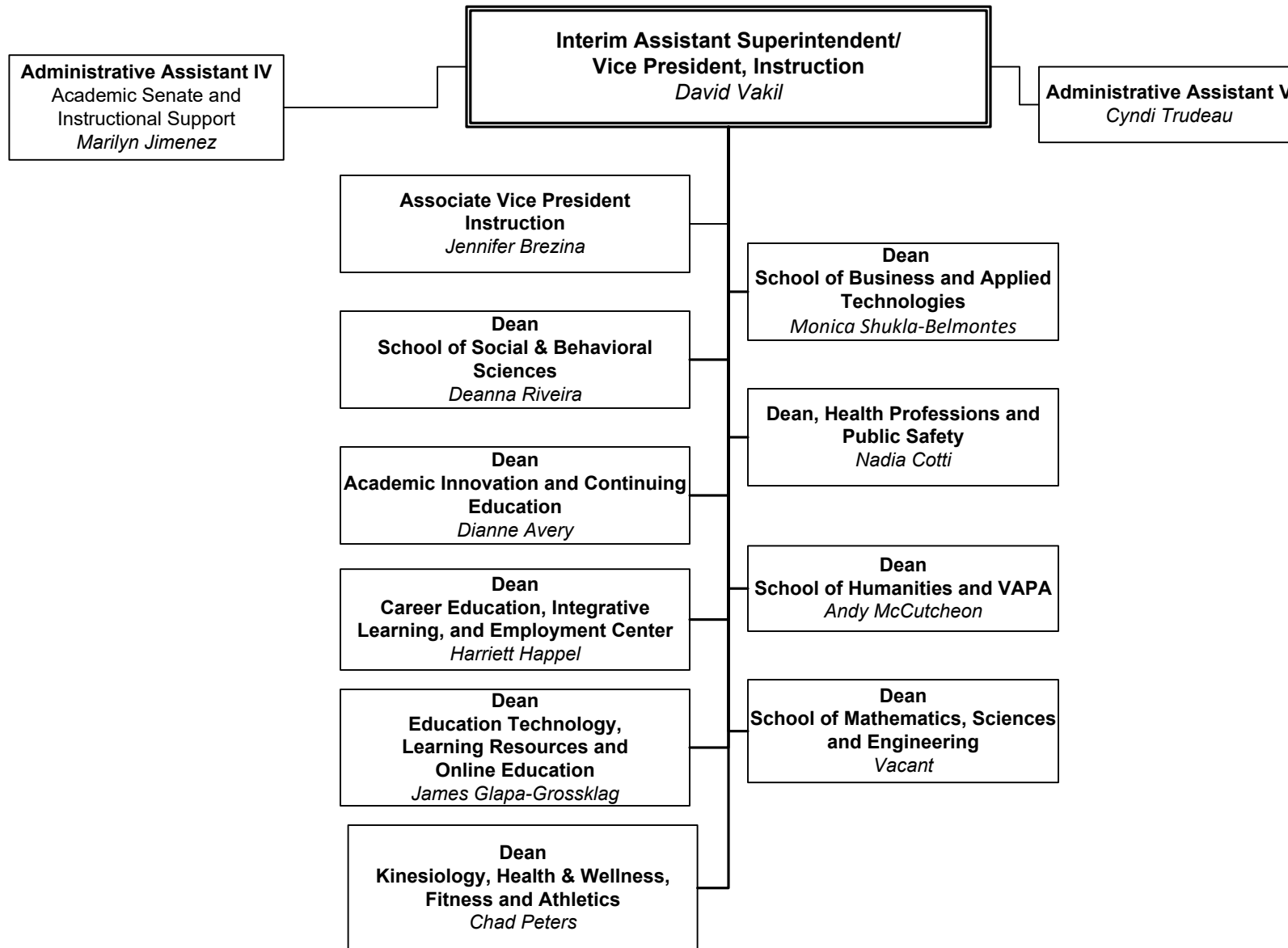
STUDENT SERVICES



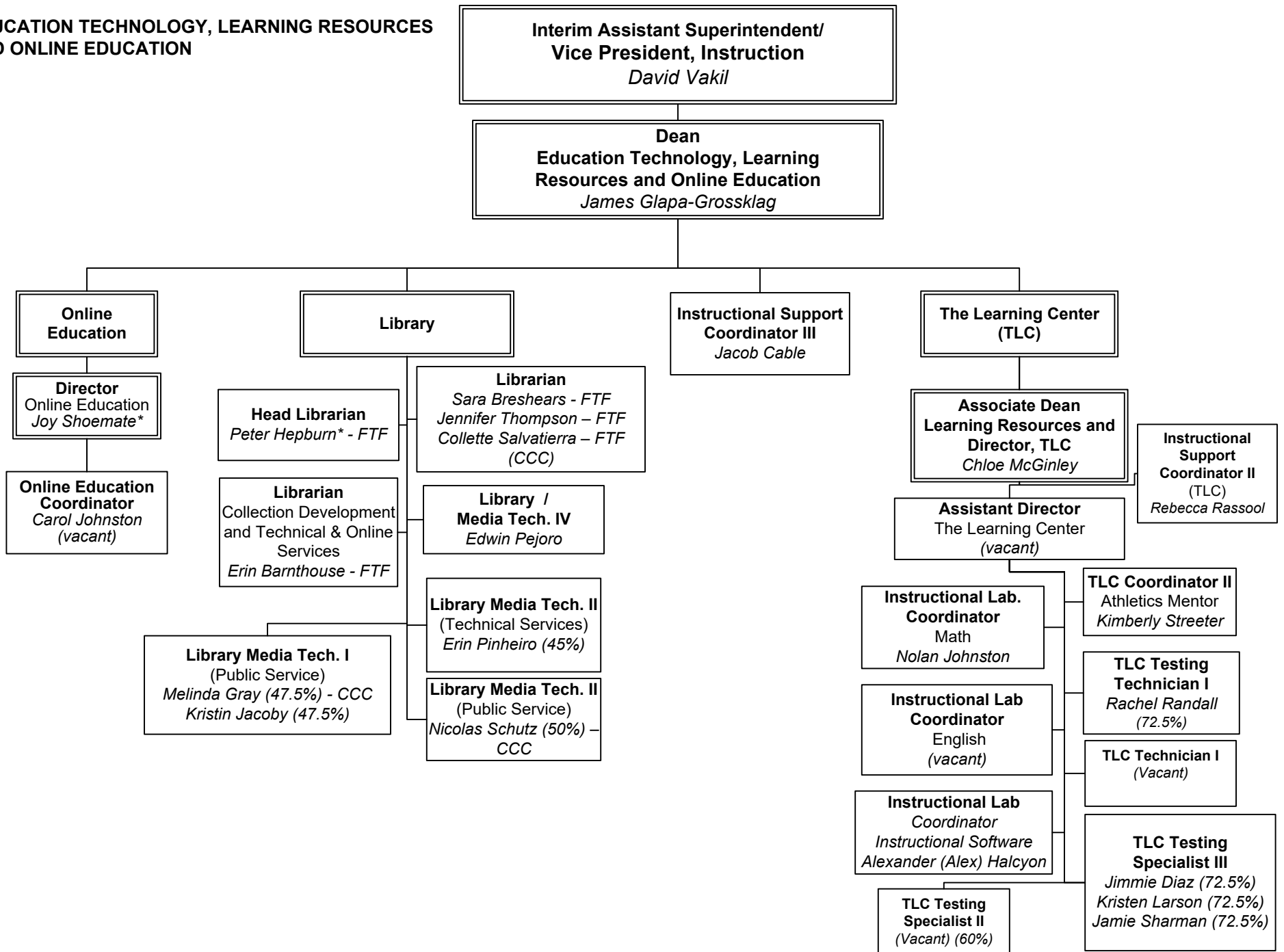
STUDENT SERVICES



OFFICE OF INSTRUCTION

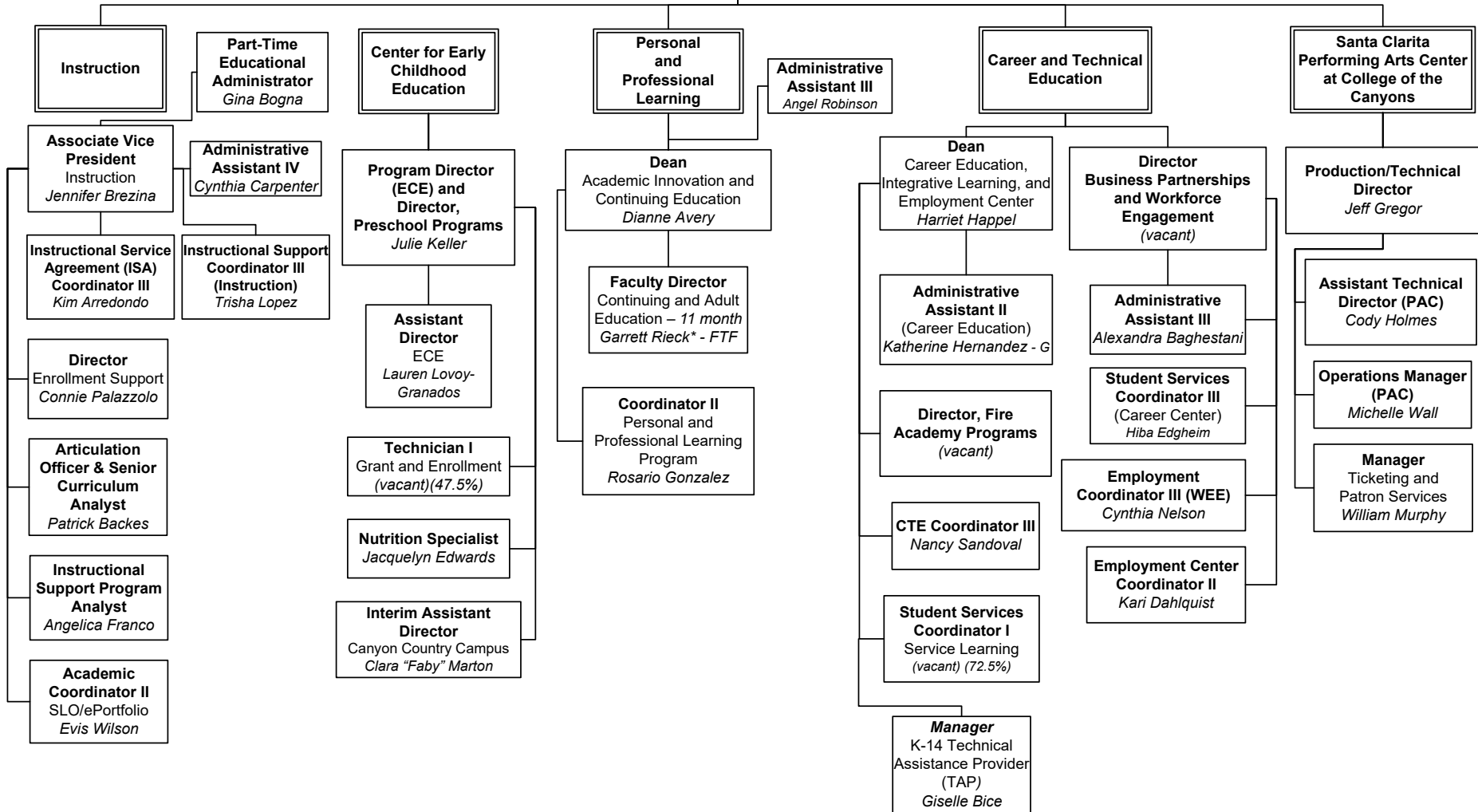


**EDUCATION TECHNOLOGY, LEARNING RESOURCES
AND ONLINE EDUCATION**

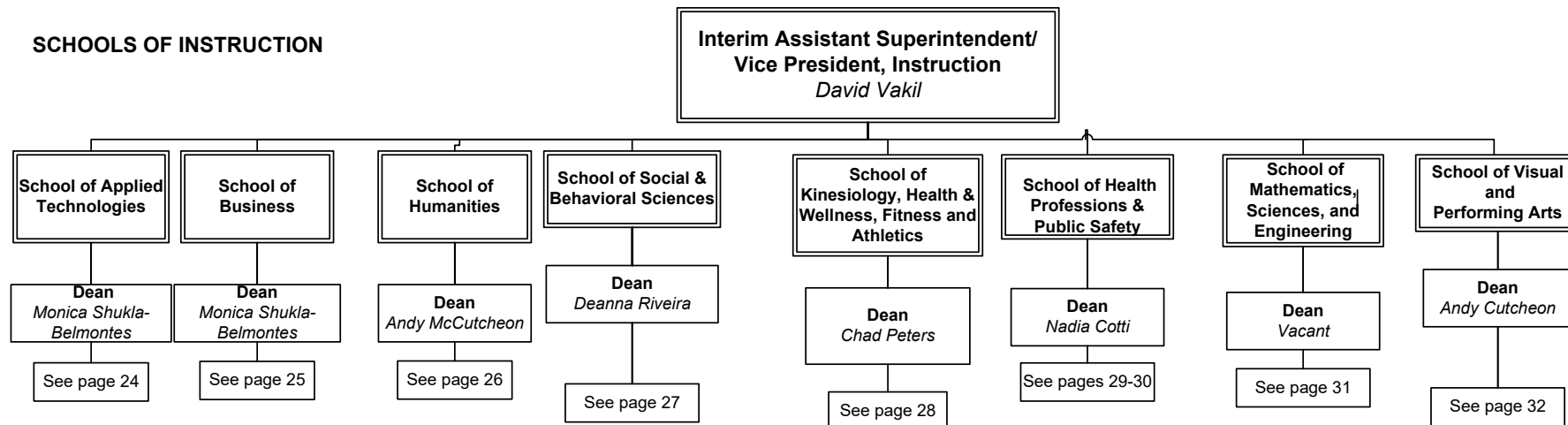


INSTRUCTION

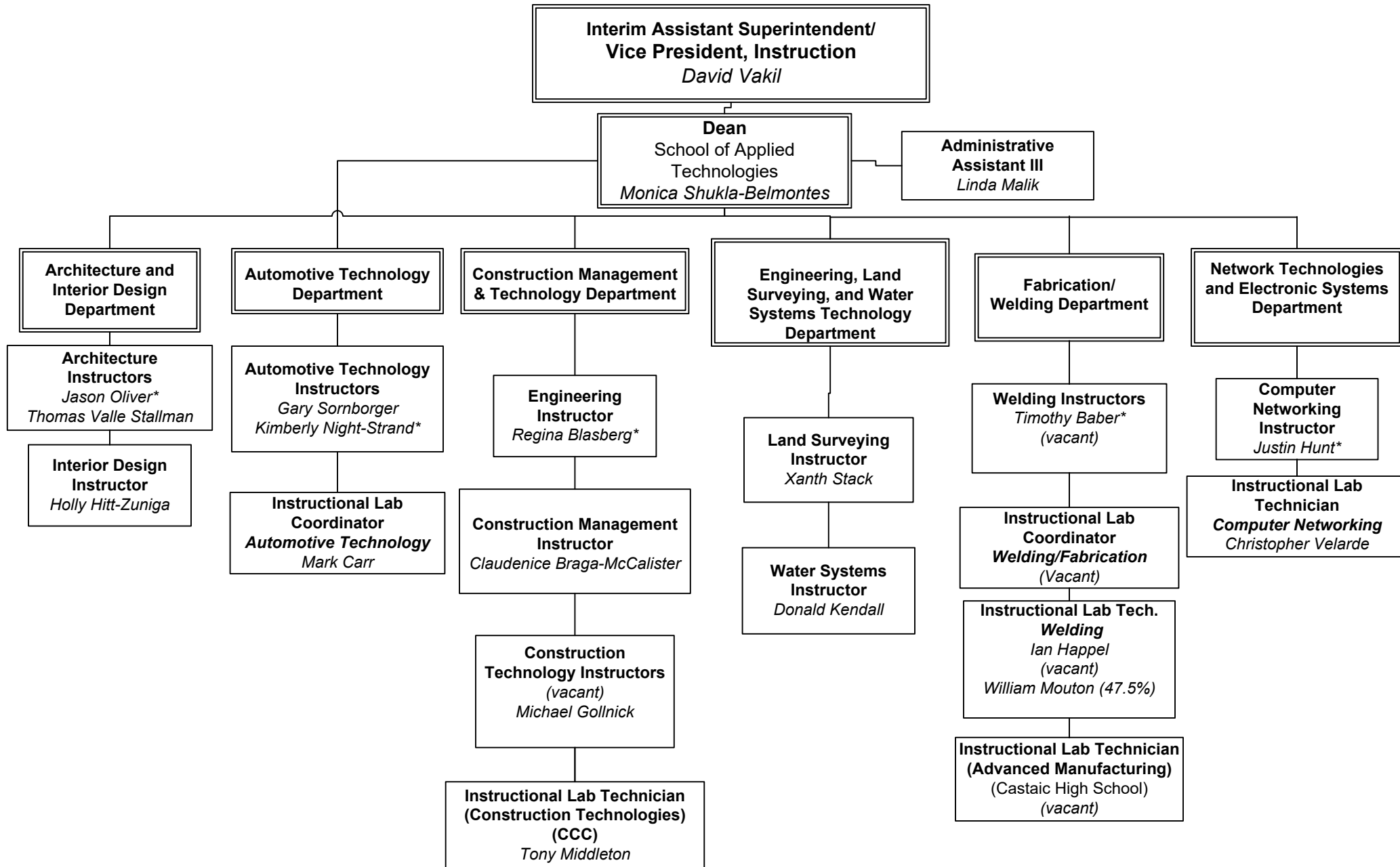
Interim Assistant Superintendent/ Vice President, Instruction David Vakil



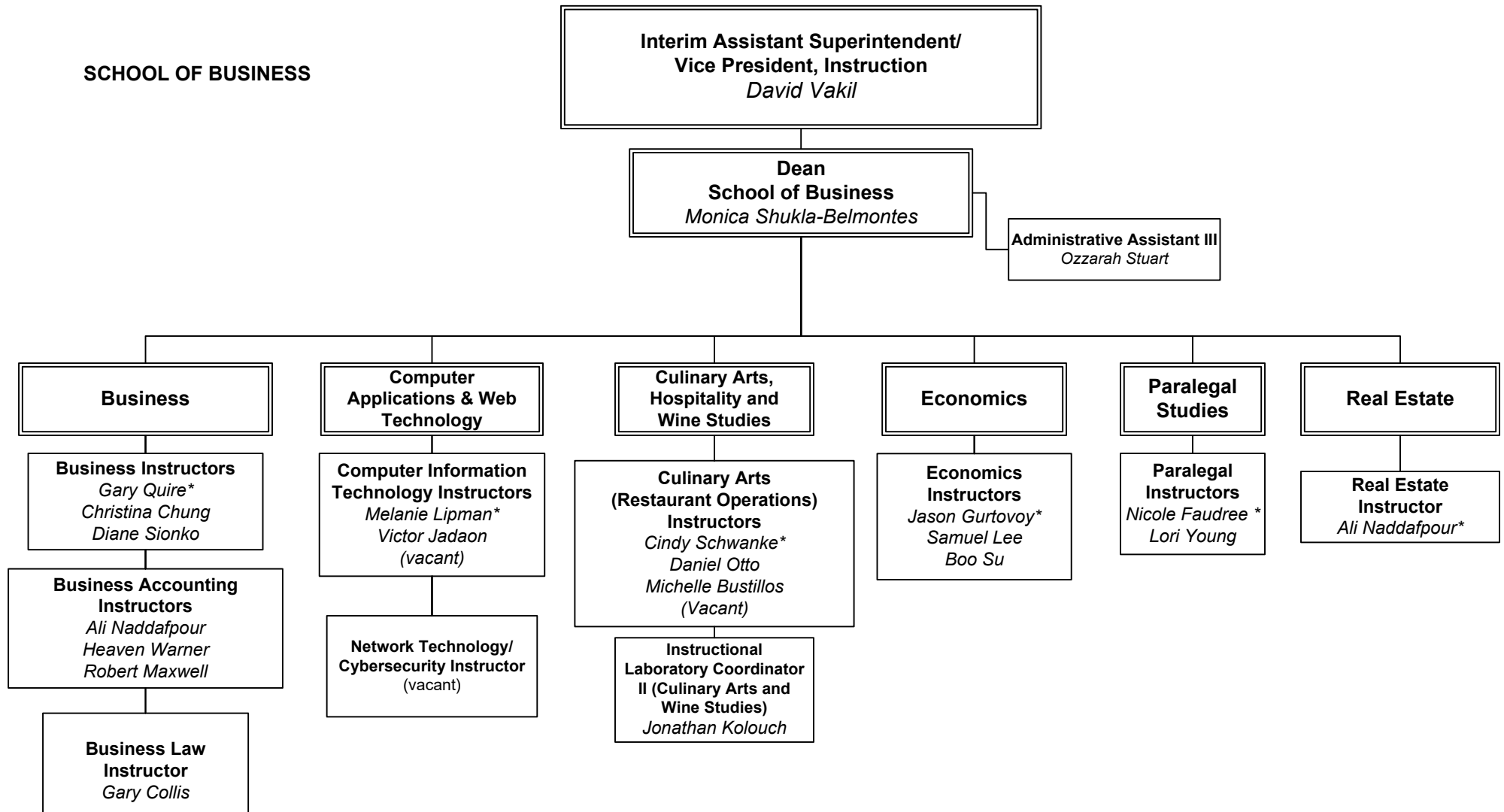
SCHOOLS OF INSTRUCTION



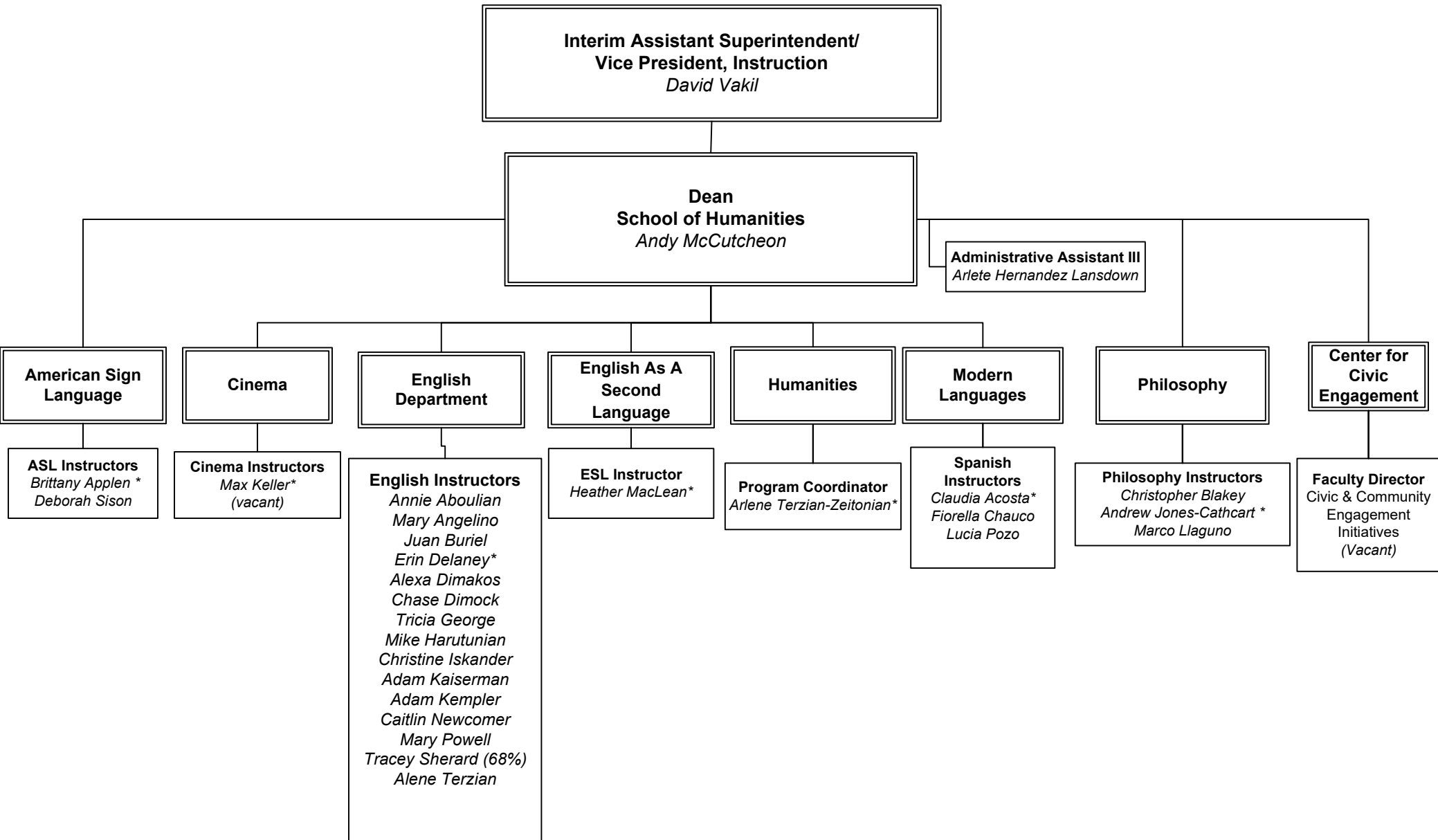
SCHOOL OF APPLIED TECHNOLOGIES



SCHOOL OF BUSINESS



**SCHOOL OF HUMANITIES &
SCHOOL OF SOCIAL AND BEHAVIORAL SCIENCES**



**SCHOOL OF SOCIAL AND
BEHAVIORAL SCIENCES**

**Interim Assistant Superintendent/
Vice President, Instruction**
David Vakil

**Dean
School of Social and Behavioral
Sciences**
Deanna Riveira

Administrative Assistant III
Lisette Godinez

**Anthropology
Department**

**Anthropology
Instructors**
*Sarah Etheridge
Lisa Malley *
Stephanie Meredith*

**Communication
Studies
Department**

**Communication
Studies Instructors**
Adam Kaminsky
Karyl Kicenski
Michael Leach
David Stevenson
Tammera Stokes-Rice
(vacant)*

**Early Childhood
Education
Department**

ECE Instructors
Jennifer Paris
Wendy Ruiz
(vacant)*

**Ethnic Studies
Department**

**Chicana/o Studies
Instructor**
Bryant Partida

**African American
Studies Instructor**
Eddie Becton

**Foster and
Kinship Care
Program**

Instructor
(vacant)

**History
Department**

History Instructors
*Erik Altenbernd
Michael Felix
Julianne Johnson
Sherrill Pennington *
Brent Riffel
John Varga*

**Political
Science
Department**

**Political Science
Instructors**
*Phil Gussin
Majid Mosleh*
Karl Striepe*

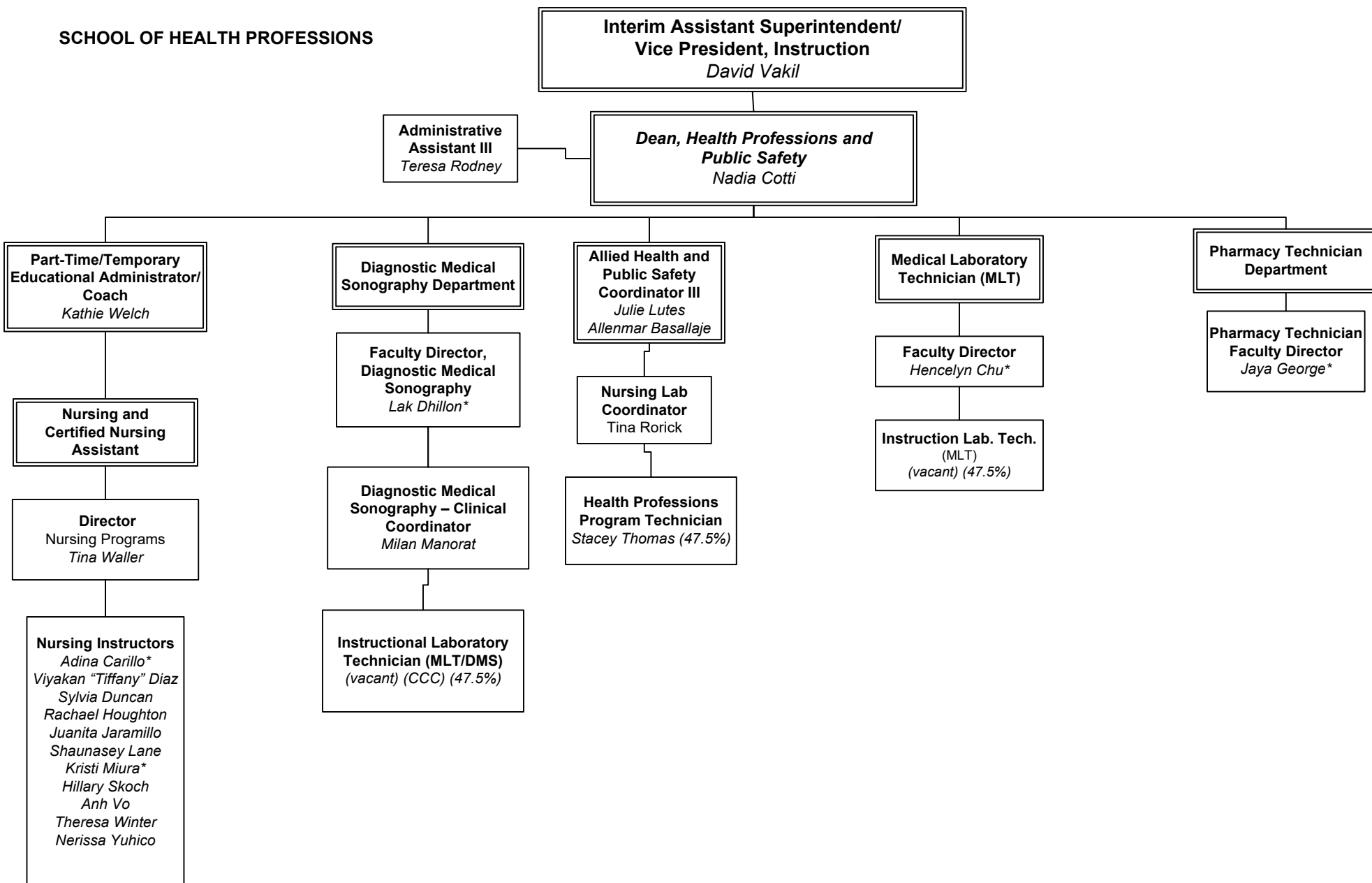
**Psychology
Department**

**Psychology
Instructors**
*Mehgen Andrade
Michelle LaBrie
Tammy Mahan
Nadia Monosov
Deanna Riveira *
Rebecca Shepherd*

**Sociology
Department**

Sociology Instructors
*Kathryn Coleman *
Anne Marengo
Hernan Ramirez
Pamela Williams-Paez
Robert Wonser*

SCHOOL OF HEALTH PROFESSIONS



FTF = Faculty

* = Dept. Chair

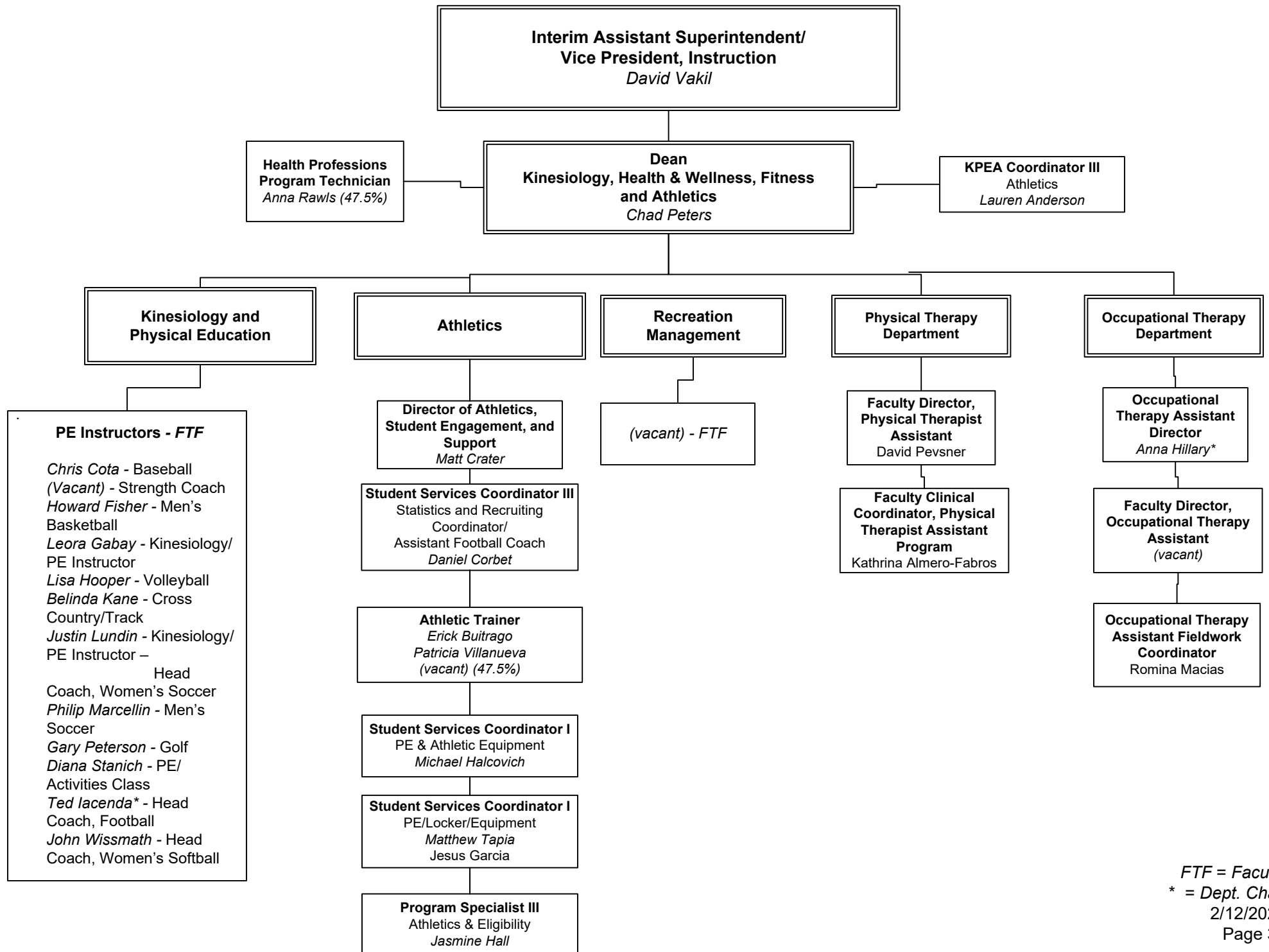
G – Grant Funded

CCC = Canyon Country Campus

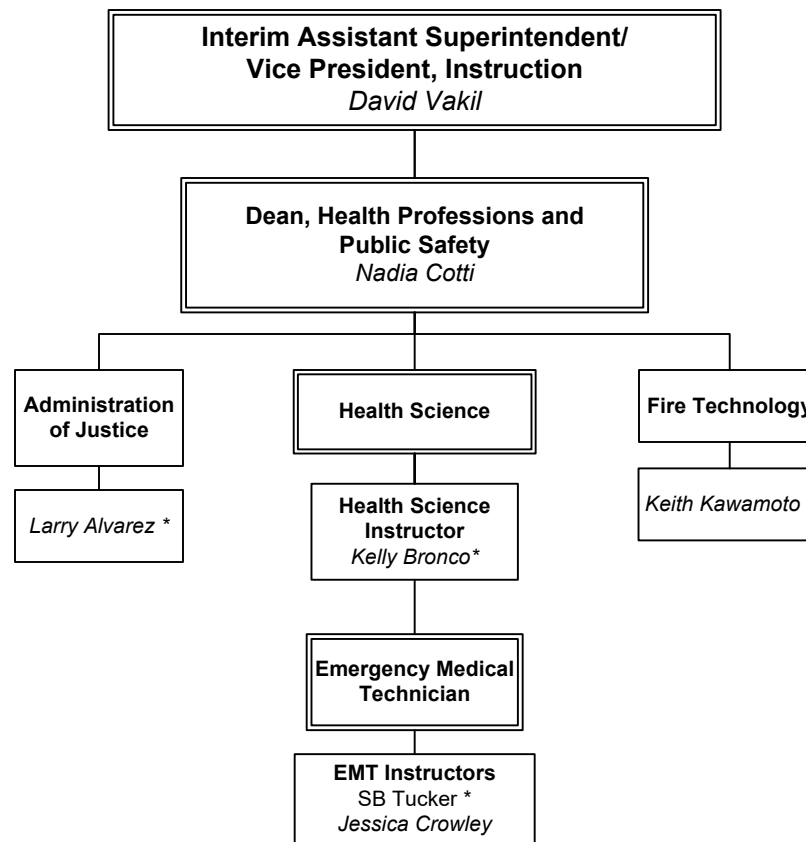
2/12/2026

Page 29

**KINESIOLOGY, HEALTH & WELLNESS,
FITNESS & ATHLETICS**



SCHOOL OF PUBLIC SAFETY



FTF = Faculty

* = Dept. Chair

G – Grant Funded

CCC = Canyon Country Campus

2/12/2026

Page 31

**SCHOOL OF MATHEMATICS, SCIENCES,
& ENGINEERING**

**Interim Assistant Superintendent/
Vice President, Instruction**
David Vakil

**Dean
School of Mathematics, Sciences,
and Engineering**
Vacant

Administrative Assistant III
Mathematics, Sciences &
Engineering
Susan Wills

**Biological and
Environmental Science
Department**

Biology Instructors

Anna Jane Almeda
Jeannie Chari
Kelly Cude*
Stephen Flanagan
Alexandra Mokhnatkina
Christopher "Shane" Ramey
Ricardo Rosales
Erica Seubert
Daniel Thomas
Dilek Sanver-Wang
Loni Hands
Erica Mullins

Senior Instructional Lab Tech.
(Biological/Physical/Sciences)
Sarah Boyle- CCC
Jenna King
Juliana Lima
Angela Vela – CCC
Norma Espinoza
LaTisha Washington – CCC

Instructional Lab Technicians
(Biological Sciences)
Rachel LaBrum
Brenda Thompson (72.5%)
Shane Yerga-Woolwine (47.5%) - CCC

**Laboratory Operations
Lead (Biological
Sciences)**
Barbara Andrade

**Mathematics
Department**

Mathematics Instructors

Kelly Aceves
Ruzanna Baytaryan
Marlene Demerjian
Collette Gibson
James Gilmore
Jeremy Goodman
*Anzhela Grigoryan**
Brandon Hilst
Mike Hubbard
Violeta Kovacev-Nikolic
Kathy Kubo
Luong Le
Saburo Matsumoto
Ana Palmer
Michael Sherry
Ambika Silva
Dustin Silva
Matt Teachout

**Chemistry
Department**

**Chemistry
Instructors**

Rana Akiel
Hind Ali
Consuelo Beecher
Thomas Gisell
Isaac Koh
Alejandro Lichtscheidl
Heidi McMahon
Miles Silverman
*Gretchen Stanton**
Tara Williams

**Laboratory Operations
Lead (Chemistry)**
Michelle Marcellin

**Laboratory Technical
Coordinator (Chemistry)**
Edwin Abrenica

**Senior Instructional Lab
Tech.**
(Chemistry)
Daniela Moreno- CCC

Instructional Lab Tech.
(Chemistry)
Amanda Baur (72.5%)
Shaina Grill (72.5%)- CCC

**Computer Science
Department**

**Computer Science
Instructors**

Christopher Ferguson
Urvashi Juneja
*Benjamin Riveira III**

**Engineering
Department**

**Engineering
Instructor**
*Patricia Foley**

**MESA Program
Director**
Amy Foote

**MESA Counselor
(72.5%)**
Jesus Vera

Program Coordinator II
Science, Technology,
Engineering and
Mathematics (STEM)
Jennifer Barrera

**Physics
Department**

**Physics
Instructor**
Nathan Bell
*David Michaels**

Instructional Lab Tech.
(Physics/Engineering/
Maker Space)
Menoa Yousefi

**Earth and Space
Sciences
Department**

**Astronomy
Instructor**
Michaela Blain

**Geology
Instructor**
Carly Gott

**Geology/
Geography
Instructor**
Jason Burgdorfer

**Geography
Instructors**
*Jeremy Patrich**

**Physical Science
Instructor**
Teresa Ciardi

**Physics/Astronomy
Instructor**
*David Michaels**

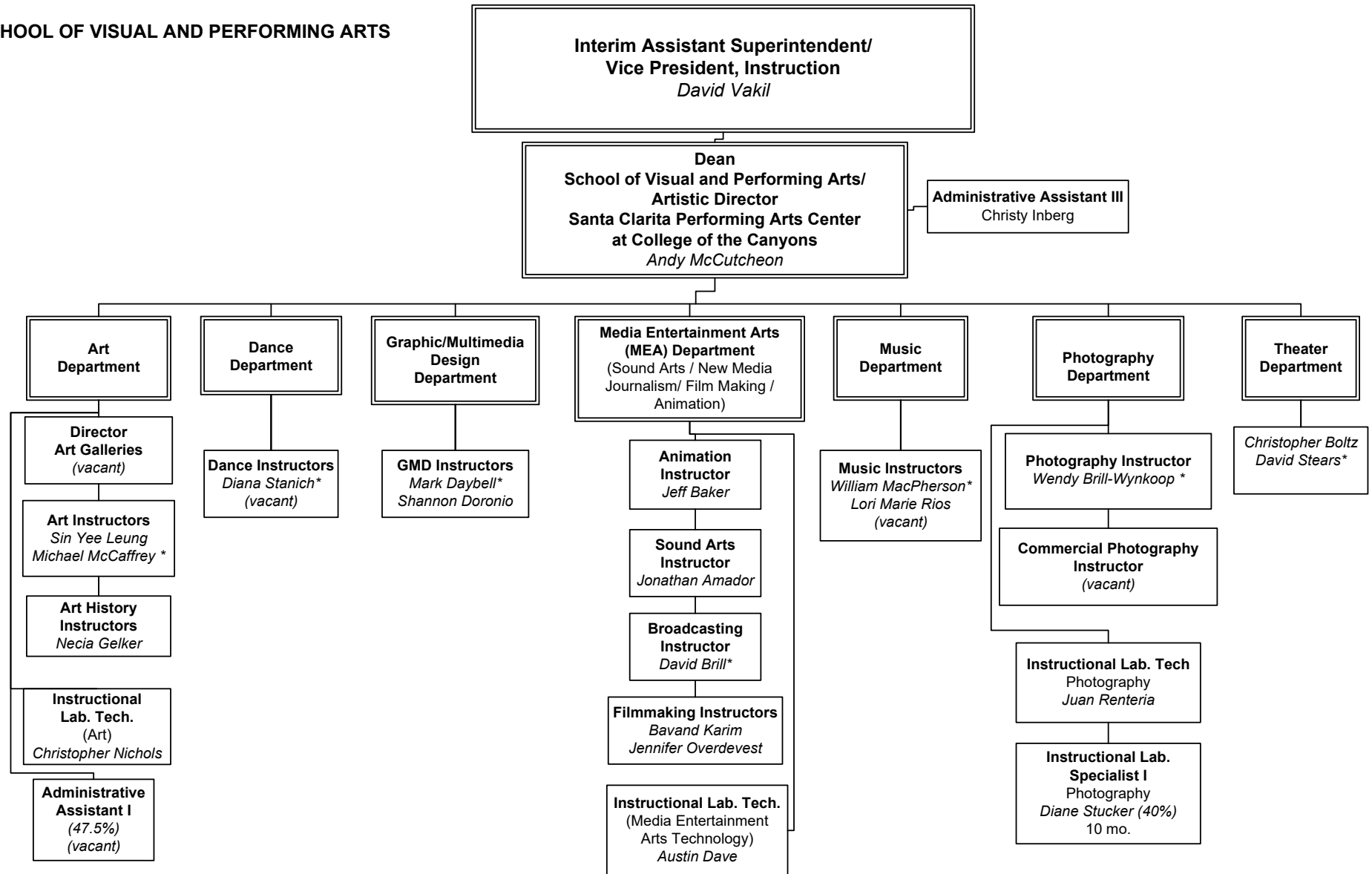
**Instructional Lab
Technicians
(Earth and Space Sciences)**

**Instructional
Lab Tech.**
Earth and Space
Sciences
Renee Wolf

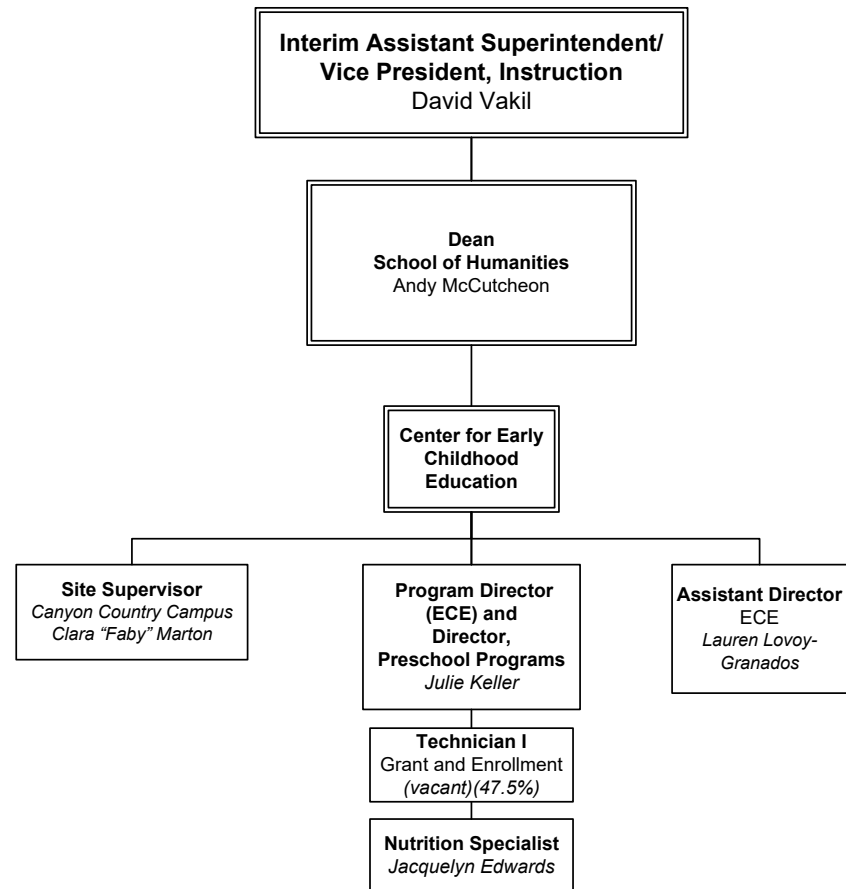
**Instructional
Lab Tech.**
Physics and Earth
and Space
Sciences (CCC)
Vacant (47.5%)

FTF = Faculty
* = Dept. Chair
G – Grant Funded
CCC = Canyon Country Campus
2/12/2026
Page 32

SCHOOL OF VISUAL AND PERFORMING ARTS



CENTER FOR EARLY CHILDHOOD EDUCATION



COLLEGE OF THE CANYONS FOUNDATION ORGANIZATION

